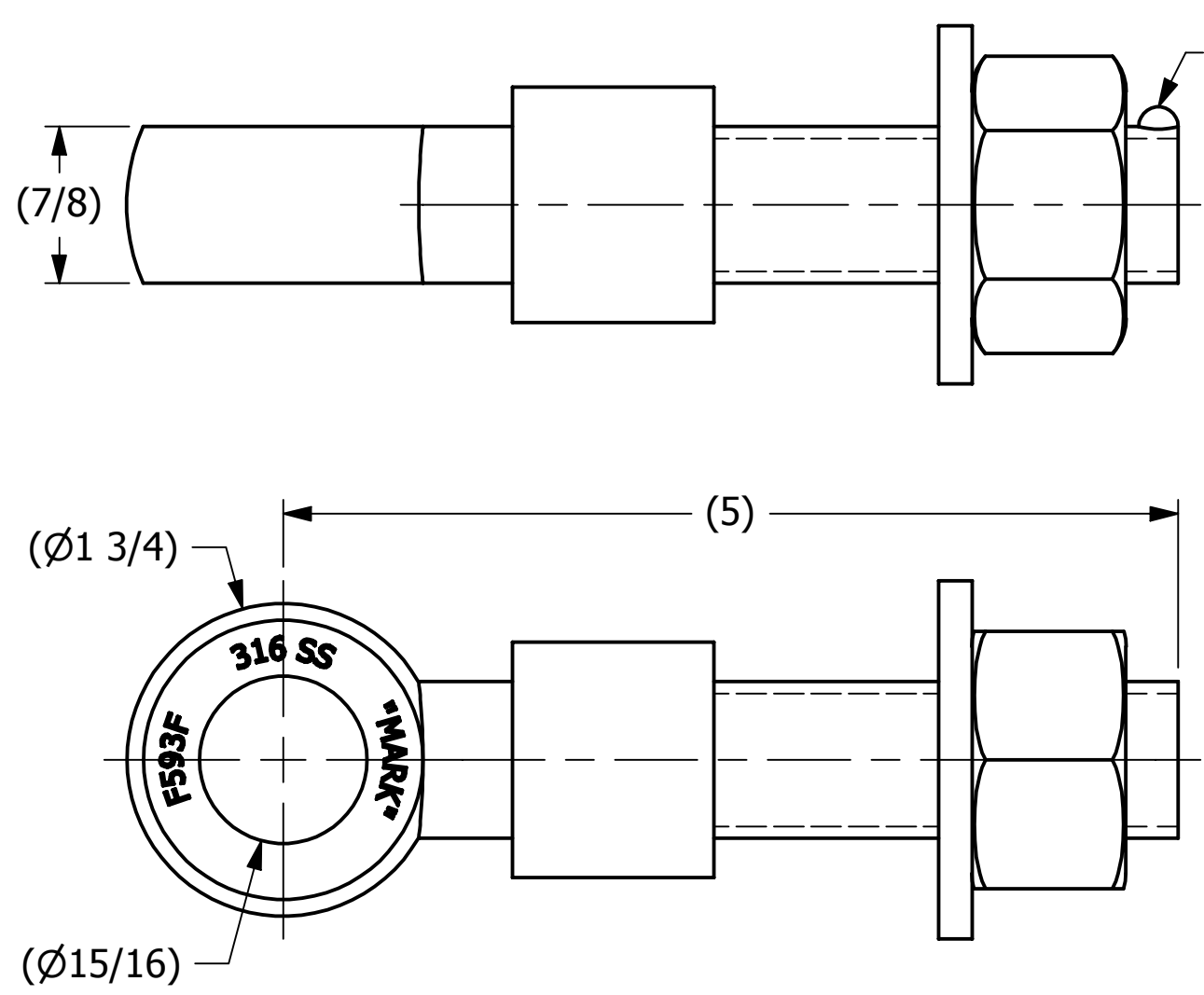
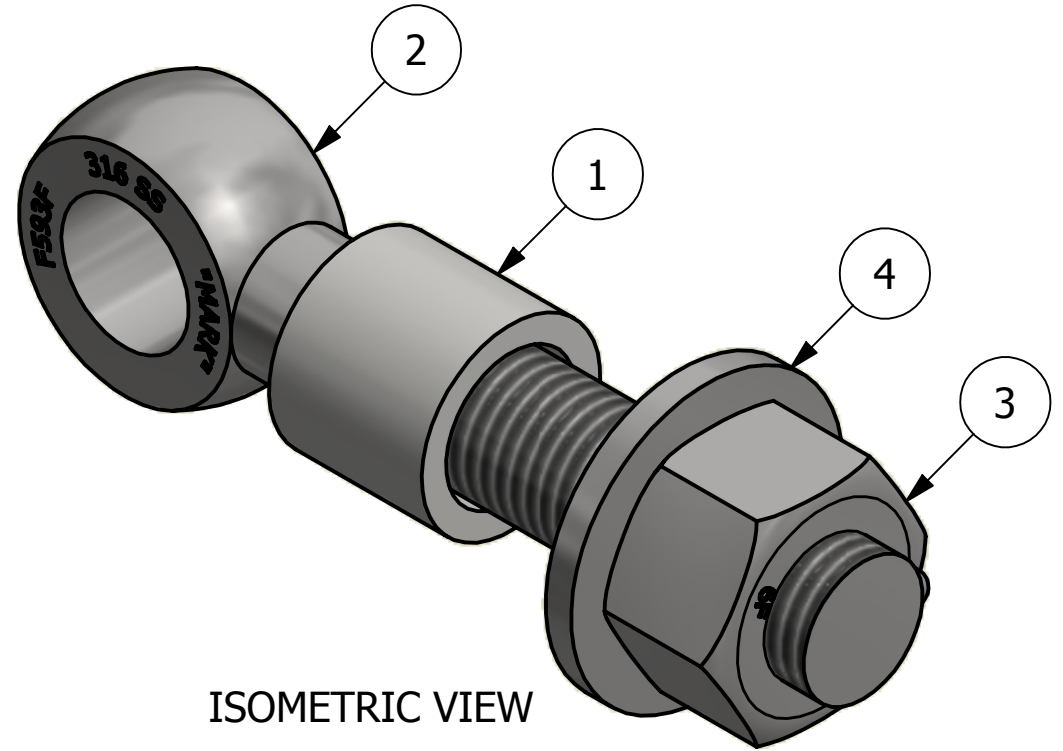


NO	PART NAME	PART #	REQ'D	MATERIAL
1	SAFETY COLLAR 7/8"	COLLAR2S6	1	316 SS
2	EYEBOLT 7/8"X5"	EBR785S6	1	316 SS
3	HEAVY HEX NUT 7/8"-9	N78XS6	1	416 SS
4	FLAT WASHER 7/8" SAE	WASH78S6	1	316 SS



APPLY A BEAD OF WELD TO THE TWO END THREADS AFTER INSTALLING COLLAR, WASHER, AND NUT.



ISOMETRIC VIEW

REV	BY	DATE	DESCRIPTION
C	RJP	7-14-17	WASH78S6 WAS WASH78S4
B	JJK	12-18-14	UPDATED DRAWING TO INVENTOR
A	CHL	8-30-04	ADDED NEW PART TO SYSTEM

<small>UNLESS OTHERWISE SPECIFIED DIMENSIONAL TOLERANCES</small> FRACTIONAL: ±1/16 X.XX: ±.03 X.XXX: ±.015 ANGULAR: ±1° <small>DEBURR ALL SHARP EDGES. ALL MACHINED SURFACES TO HAVE A 125 RMS FINISH UNLESS NOTED OTHERWISE.</small> <small>THIRD ANGLE PROJECTION</small>	DRAWN BY:	CHL
	CHECKED BY:	ACC
	PROTOTYPE BY:	CHL
	PROTOTYPE DATE:	6/24/2004
	APPROVED FOR PRODUCTION BY:	ACC
	PRODUCTION DATE:	8/30/2004

SALCO PRODUCTS, INC.

PART NAME: **EYEBOLT ASSEMBLY 7/8"X5"**

MATERIAL: **SEE BOM**

PROJECT #: **WAG0151** SHEET #: **1 OF 1** SCALE: **1:1**

DRAWING #: **B19334** PART #: **EB785XAS6C**

THIS PRINT, PROPERTY OF SALCO PRODUCTS INC., CONTAINS PROPRIETARY INFORMATION AND MUST NOT BE COPIED, REPRODUCED, OR USED DETRIMENTALLY TO OUR INTEREST.