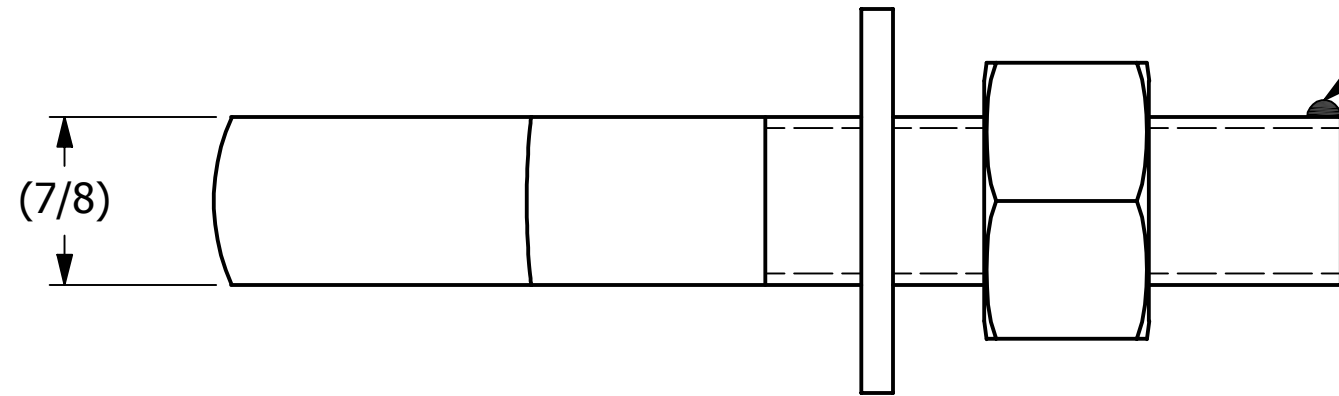
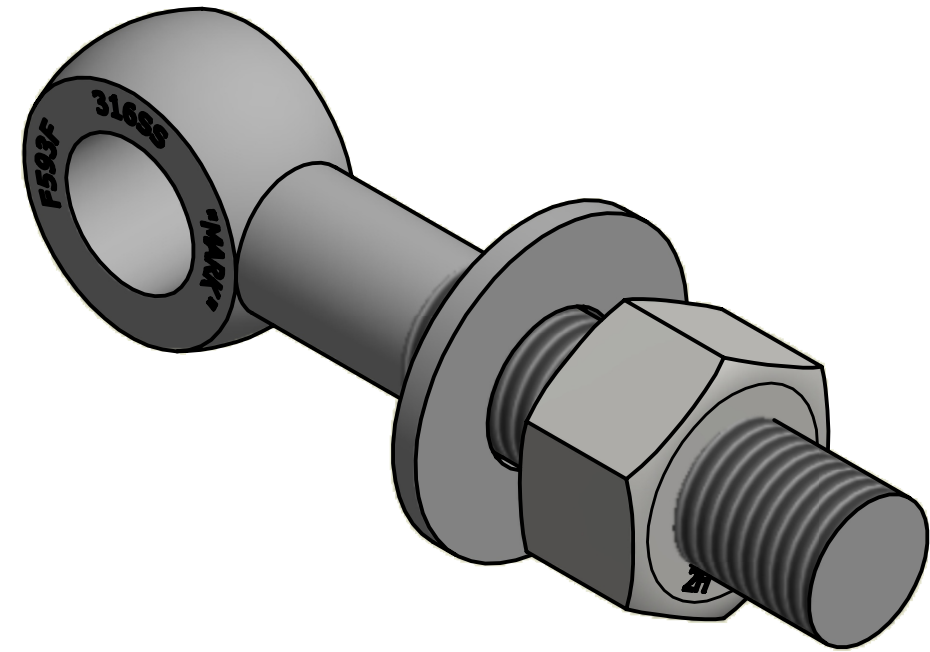


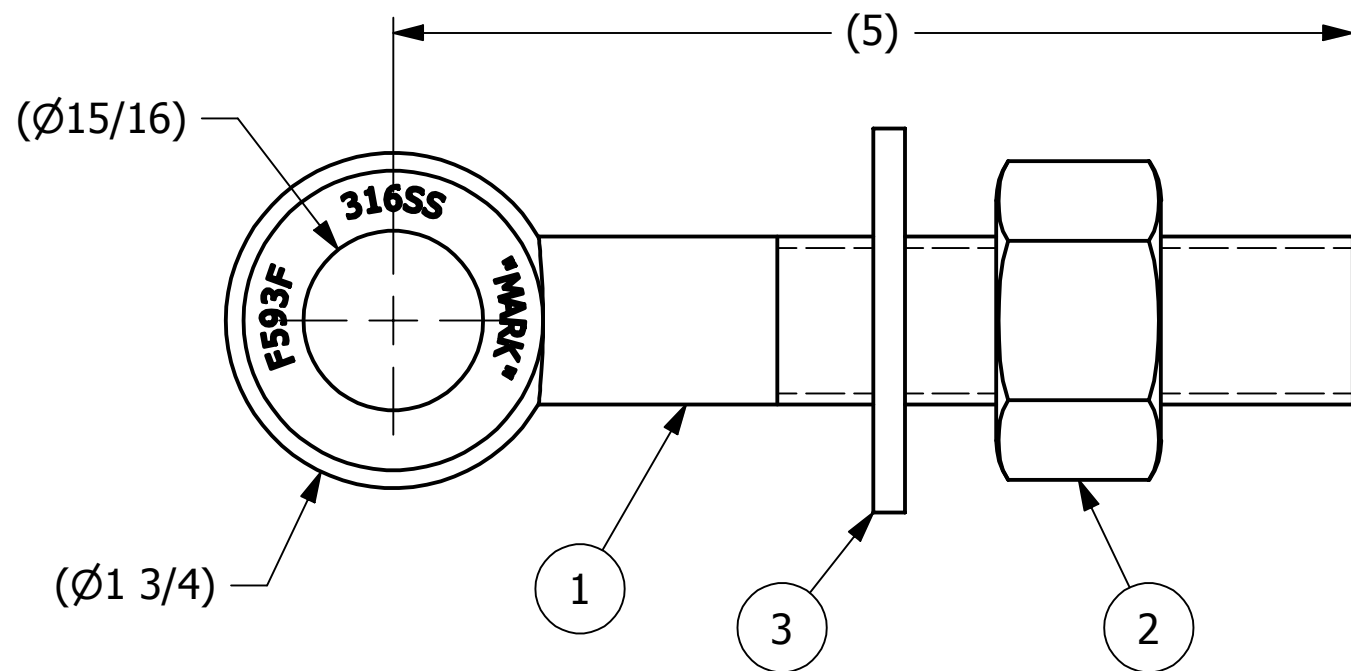
NO.	PART NAME	PART#	REQ'D	MATERIAL
1	EYEBOLT 7/8"X5"	EBR785S6	1	316 SS
2	HEAVY HEX NUT 7/8"-9	N78X	1	CARBON STEEL
3	FLAT WASHER 7/8" SAE	WASH78S6	1	316 SS



APPLY A BEAD OF WELD TO THE TWO END THREADS AFTER INSALLING WASHER AND NUT.



ISOMETRIC VIEW



REV	BY	DATE	DESCRIPTION
C	JJK	4-21-14	REPLACED EBR785LTS6 W/ EBR785S6
B	SAB	11-26-01	CANGED MTERIAL EB785LTS6 WAS 1045 STEEL
A	FOD	8-5-99	UPDATED BOM, ITEM #1 WAS EB785

<small>UNLESS OTHERWISE SPECIFIED DIMENSIONAL TOLERANCES</small> FRACTIONAL: ±1/16 X.XX: ±.03 X.XXX: ±.015 ANGULAR: ±1° <small>DEBURR ALL SHARP EDGES. ALL MACHINED SURFACES TO HAVE A 125 RMS FINISH UNLESS NOTED OTHERWISE.</small>	DRAWN BY:	SAB
	CHECKED BY:	ACC
	PROTOTYPE BY:	SAB
	PROTOTYPE DATE:	8/2/2001
<small>THIRD ANGLE PROJECTION</small> 	APPROVED FOR PRODUCTION BY:	ACC
	PRODUCTION DATE:	8/2/2001

SALCO PRODUCTS, INC.

PART NAME: **EYBOLT ASSEMBLY 7/8"X5"**

MATERIAL: **SEE BOM**

PROJECT #: _____ SHEET #: **1 OF 1** SCALE: **1:1**

DRAWING #: **B16022** PART #: **EB785XAS6CN**

THIS PRINT, PROPERTY OF SALCO PRODUCTS INC., CONTAINS PROPRIETARY INFORMATION AND MUST NOT BE COPIED, REPRODUCED, OR USED DETRIMENTALLY TO OUR INTEREST.