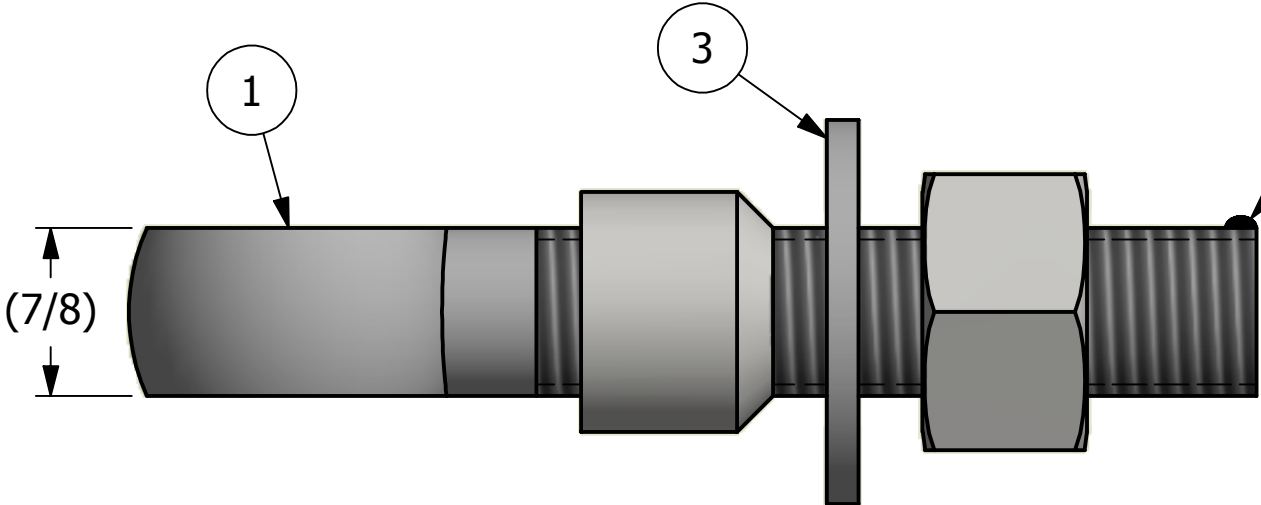
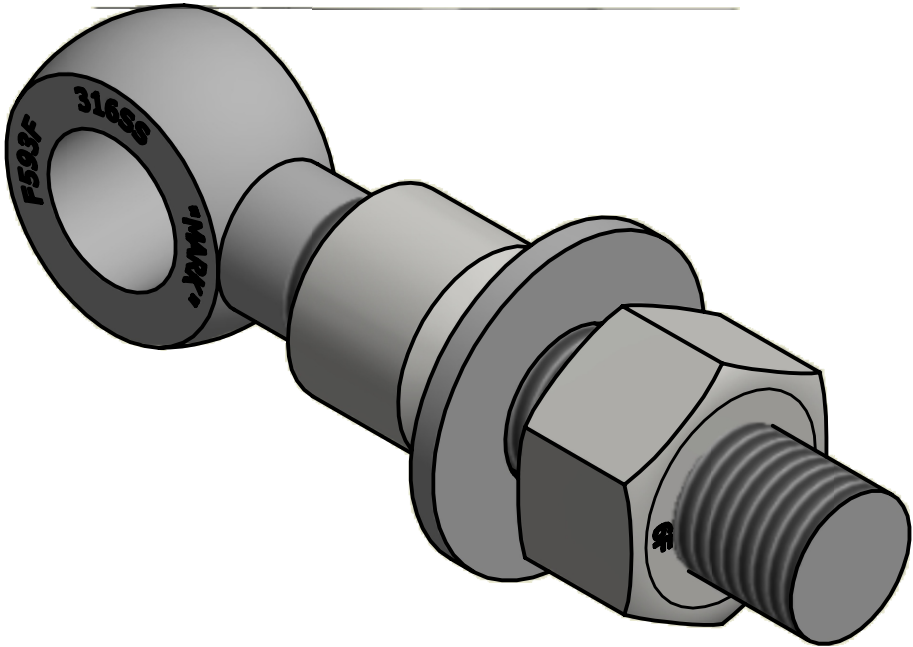


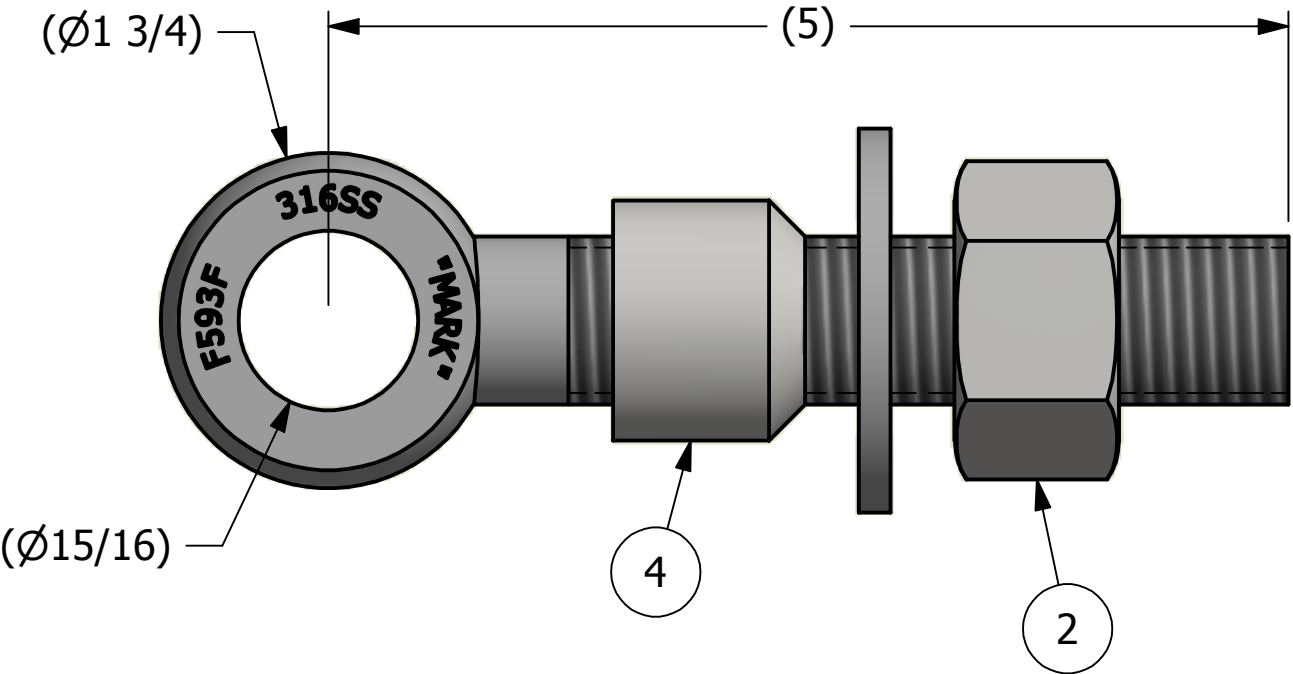
NO.	PART NAME	PART #	REQ'D	MATERIAL
1	EYEBOLT 7/8"X5"	EBR785FTS6	1	316 SS
2	HEAVY HEX NUT 7/8"-9	N78XS6	1	416 SS
3	FLAT WASHER 7/8" SAE	WASH78S6	1	316 SS
4	EYEBOLT SAFETY COLLAR 7/8"	COLLAR78S3T3	1	303 SS





APPLY A BEAD OF WELD TO THE TWO END  
THREADS, AFTER INSTALLING WASHER AND NUT



ISOMETRIC VIEW



B	JJK	4-21-14	UPDATED EYEBOLT OD
A	CHL	9-17-10	NEW PART ADDED TO NETWORK
REV	BY	DATE	DESCRIPTION

UNLESS OTHERWISE SPECIFIED DIMENSIONAL TOLERANCES FRACTIONAL: $\pm 1/16$ X.XX: $\pm .03$ X.XXX: $\pm .015$ ANGULAR: $\pm 1^\circ$ DEBURR ALL SHARP EDGES. ALL MACHINED SURFACES TO HAVE A 125 RMS FINISH UNLESS NOTED OTHERWISE. THIRD ANGLE PROJECTION	DRAWN BY:	CHL	 <b>SALCO PRODUCTS, INC.</b>	
	CHECKED BY:	VD		
	PROTOTYPE BY:	CHL	PART NAME: <b>EYEBOLT ASSEMBLY 7/8"X5"</b>	
	PROTOTYPE DATE:	5/21/2010	MATERIAL: <b>SEE BOM</b>	
	APPROVED FOR PRODUCTION BY:	VD	PROJECT #: <b>091228</b>	SHEET #: <b>1 OF 1</b>
	PRODUCTION DATE:	9/17/2010	DRAWING #: <b>B28793</b>	PART #: <b>EB785XFTAS6TC3</b>

THIS PRINT, PROPERTY OF SALCO PRODUCTS INC., CONTAINS PROPRIETARY INFORMATION  
AND MUST NOT BE COPIED, REPRODUCED, OR USED DETRIMENTALLY TO OUR INTEREST.