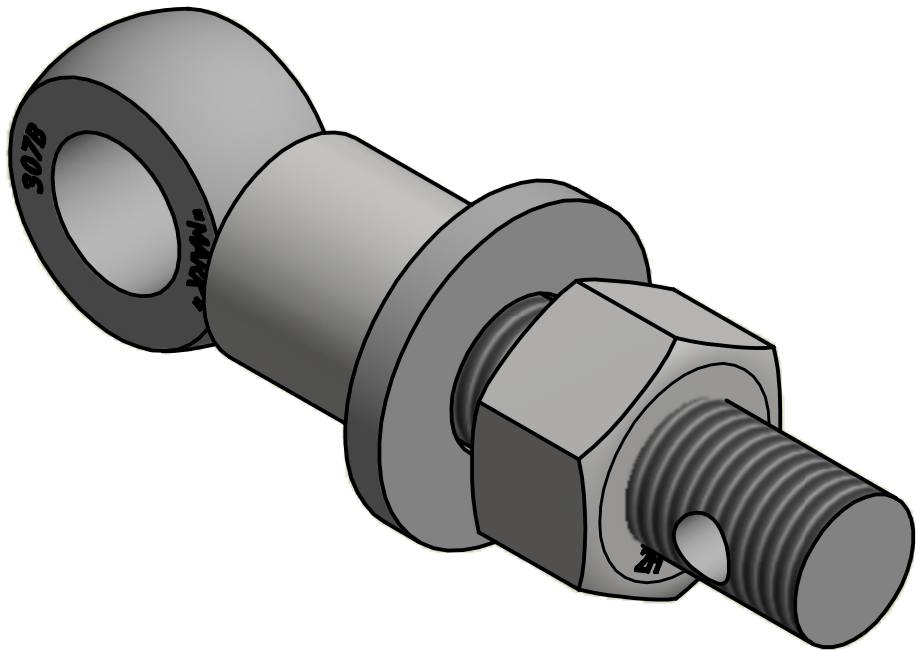
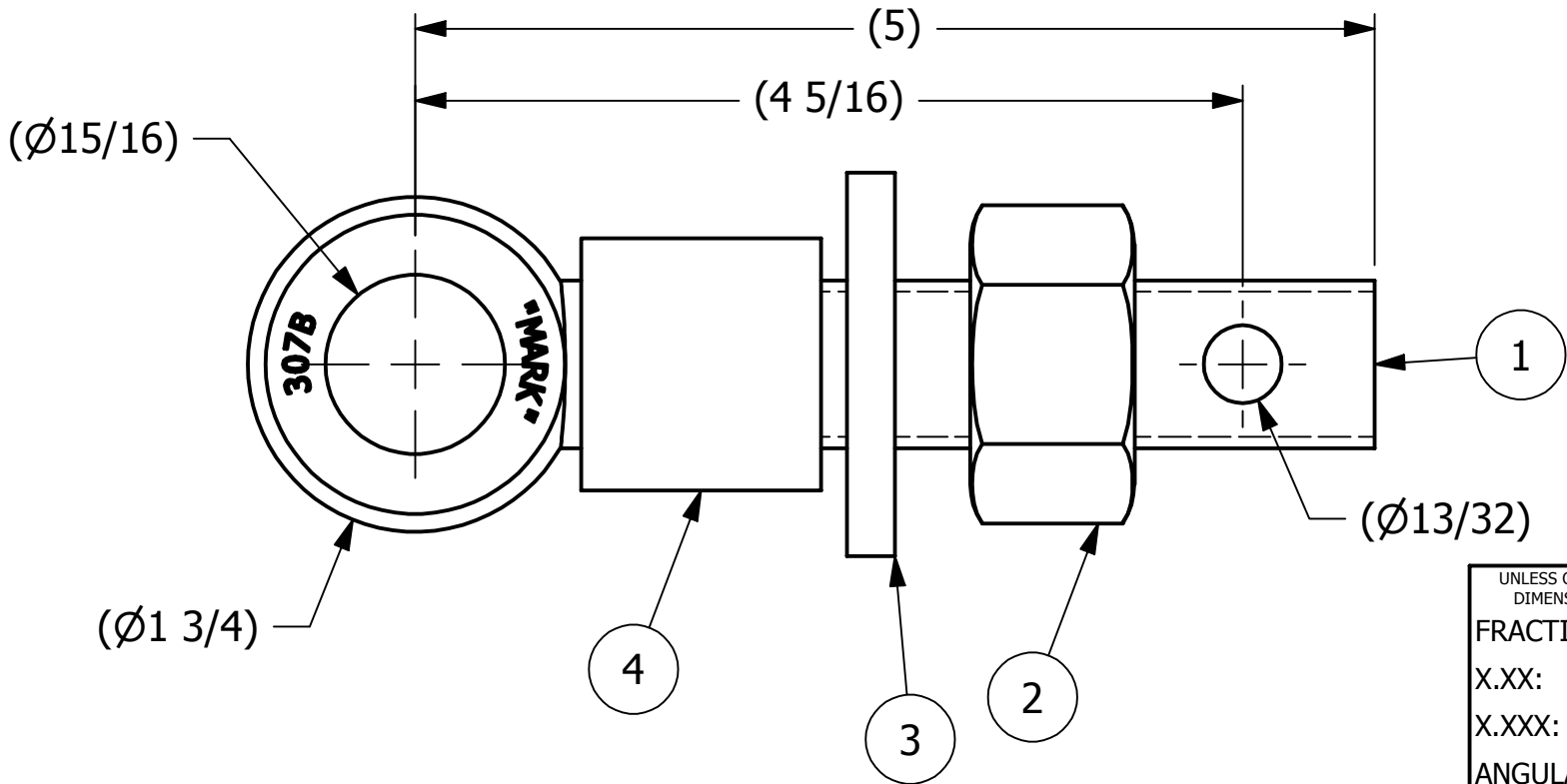
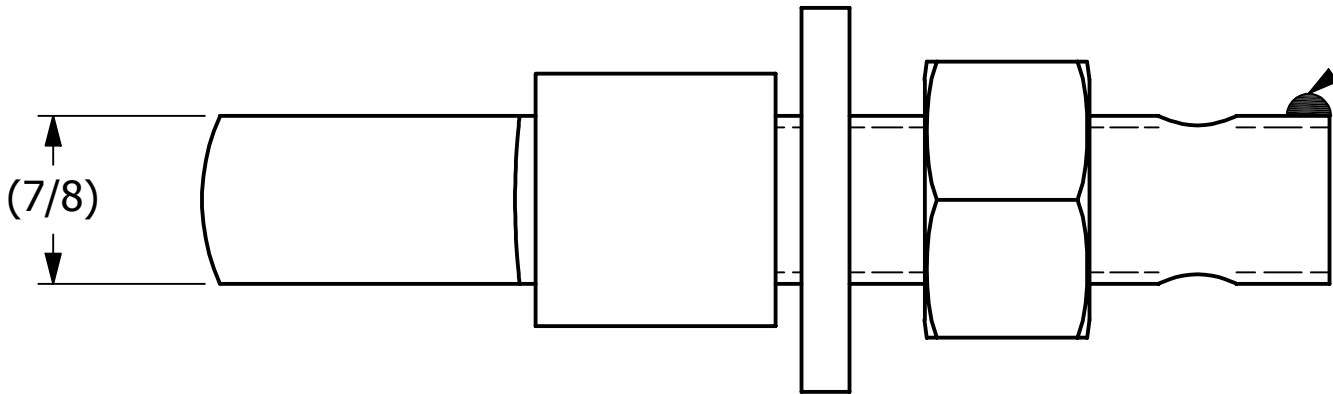



NO.	PART NAME	PART #	REQ'D	MATERIAL
1	EYEBOLT 7/8"X5"	EBR785H	1	CARBON STEEL
2	HEAVY HEX NUT 7/8"-9	N78X	1	CARBON STEEL
3	FLAT WASHER 7/8"	WASH78T	1	CARBON STEEL
4	SAFETY COLLAR 1"	COLLAR1	1	CARBON STEEL

APPLY A BEAD OF WELD TO THE TWO END
THREADS AFTER INSTALLING COLLAR, WASHER, AND NUT.



C	JJK	5-9-14	UPDATED EYEBOLT OD
B	CHL	2-14-11	CHANGED EYEBOLT MATERIAL
A	PJG	12-26-00	UPDATED BOM, ITEM #4 WAS COLLAR1S4
REV	BY	DATE	DESCRIPTION
<div><div></div><div>SALCO PRODUCTS, INC.</div></div>			
PART NAME: EYEBOLT ASSEMBLY 7/8"X5"			
MATERIAL: SEE BOM			
PROJECT #:		SHEET #: 1 OF 1	SCALE: 1:1
DRAWING #:		PART #:	
B14480		EB785XHAC	

UNLESS OTHERWISE SPECIFIED DIMENSIONAL TOLERANCES FRACTIONAL: ±1/16 X.XX: ±.03 X.XXX: ±.015 ANGULAR: ±1° DEBURR ALL SHARP EDGES. ALL MACHINED SURFACES TO HAVE A 125 RMS FINISH UNLESS NOTED OTHERWISE. THIRD ANGLE PROJECTION	DRAWN BY:	FOD
	CHECKED BY:	SAB
	PROTOTYPE BY:	FOD
	PROTOTYPE DATE:	5/25/1999
	APPROVED FOR PRODUCTION BY:	
	PRODUCTION DATE:	

THIS PRINT, PROPERTY OF SALCO PRODUCTS INC., CONTAINS PROPRIETARY INFORMATION
AND MUST NOT BE COPIED, REPRODUCED, OR USED DETRIMENTALLY TO OUR INTEREST.