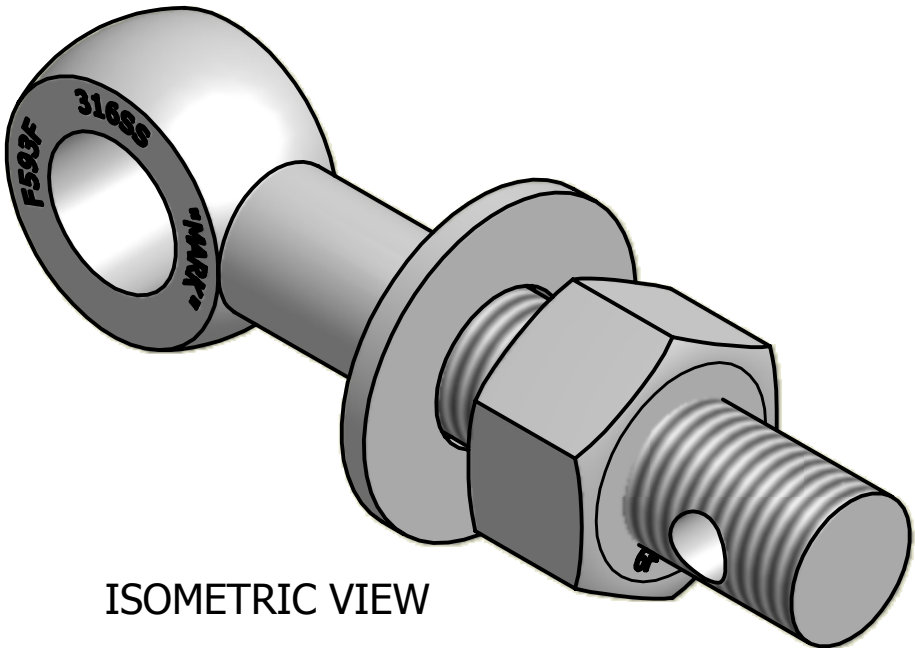
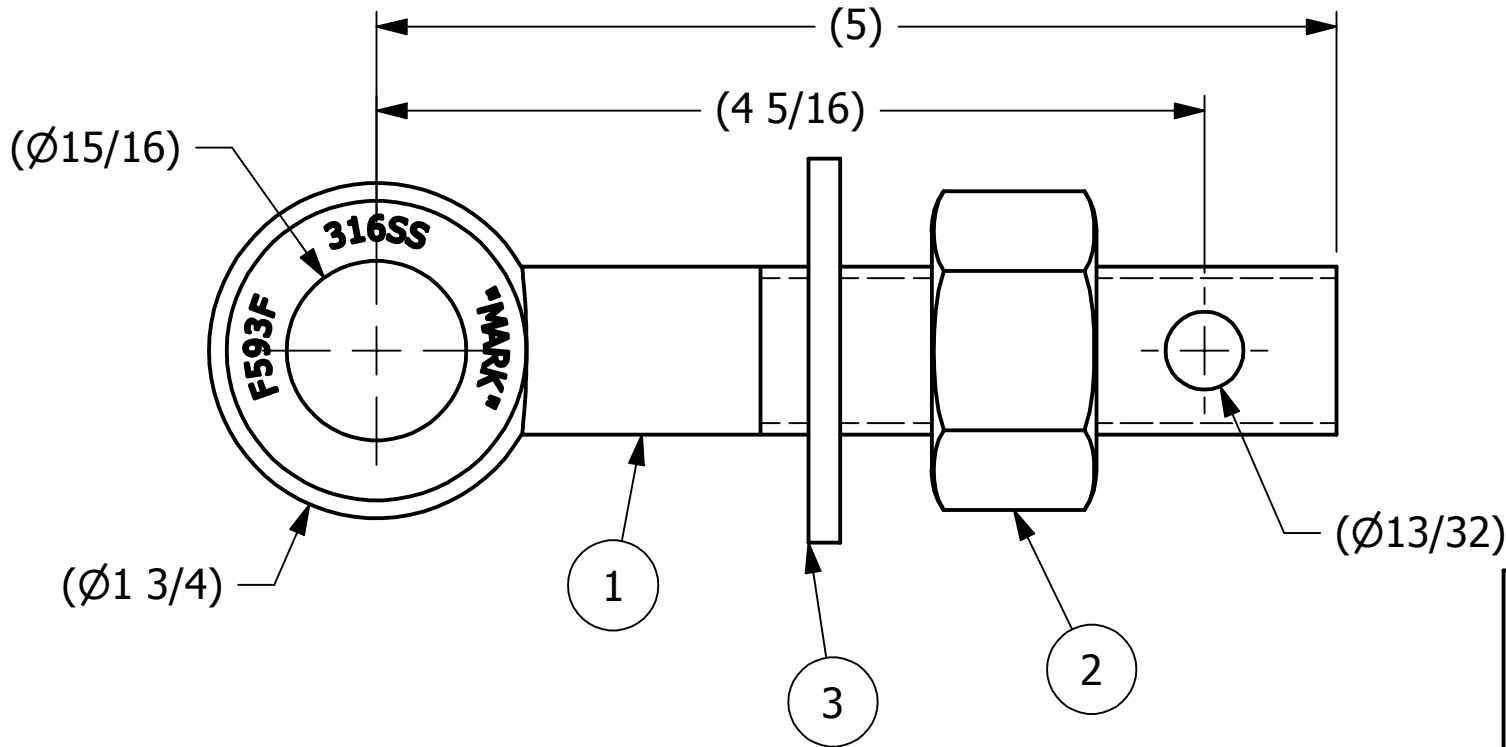
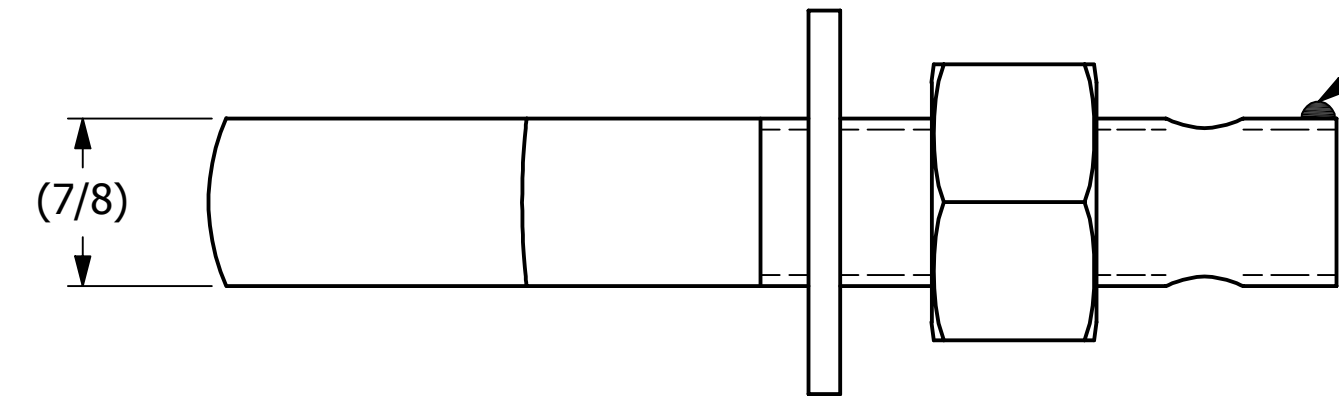


2		1		
NO.	PART NAME	PART#	REQ'D	MATERIAL
1	EYEBOLT 7/8"X5"	EBR785HS6	1	316 SS
2	HEAVY HEX NUT 7/8"-9	N78XS6	1	416 SS
3	FLAT WASHER 7/8" SAE	WASH78S6	1	316 SS

APPLY A BEAD OF WELD TO THE TWO END
THREADS AFTER INSTALLING WASHER AND NUT.



B	CHL	5-31-05	REPLACED RIVET W/ WELD STO & REPLACED EBR785HS6R W/ EBR785HS6
A	CHL	11-26-01	REPLACED SN14S W/ A16204
REV	BY	DATE	DESCRIPTION

UNLESS OTHERWISE SPECIFIED DIMENSIONAL TOLERANCES FRACTIONAL: $\pm 1/16$ X.XX: $\pm .03$ X.XXX: $\pm .015$ ANGULAR: $\pm 1^\circ$ DEBURR ALL SHARP EDGES. ALL MACHINED SURFACES TO HAVE A 125 RMS FINISH UNLESS NOTED OTHERWISE. THIRD ANGLE PROJECTION	DRAWN BY:	FOD
	CHECKED BY:	SAB
	PROTOTYPE BY:	FOD
	PROTOTYPE DATE:	6/1/1999
	APPROVED FOR PRODUCTION BY:	SAB
	PRODUCTION DATE:	6/1/1999

PART NAME: EYEBOLT ASSMBLY 7/8"X5"		
MATERIAL: SEE BOM		
PROJECT #:	SHEET #: 1 OF 1	SCALE: 1:1
DRAWING #:	PART #:	
B13499	EB785XHAS6	