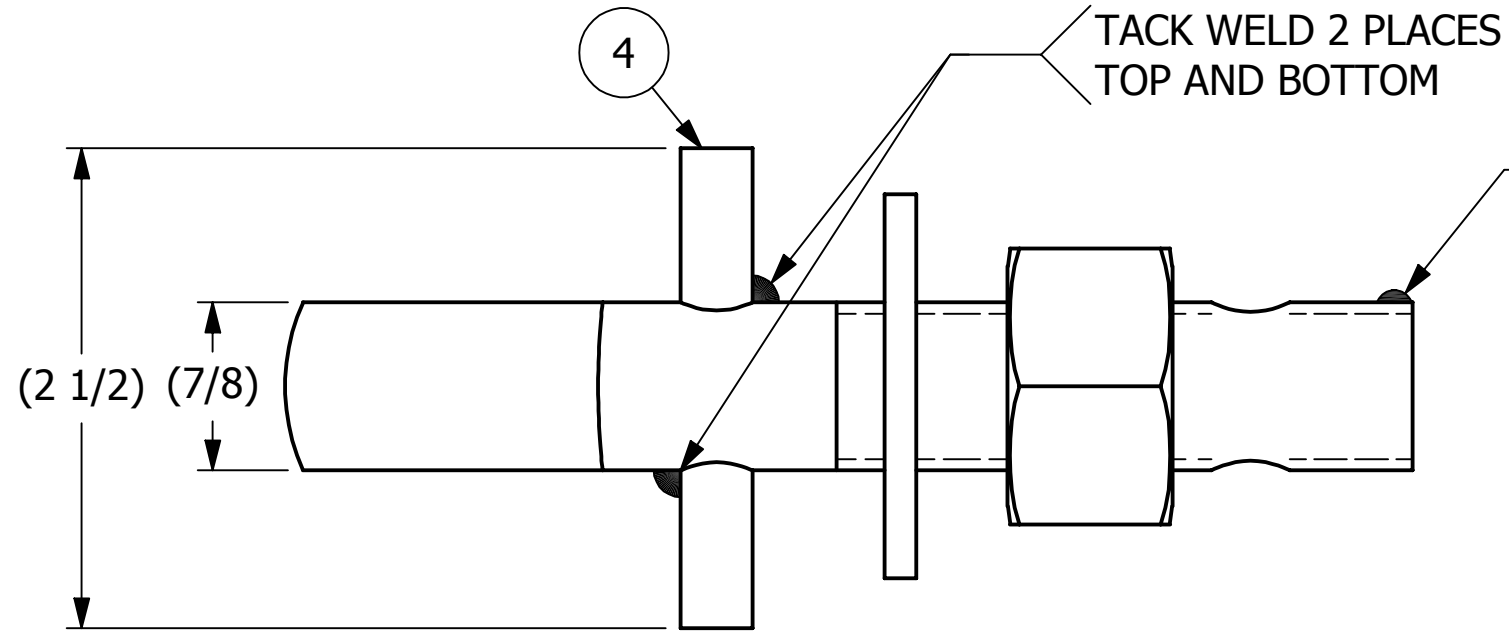
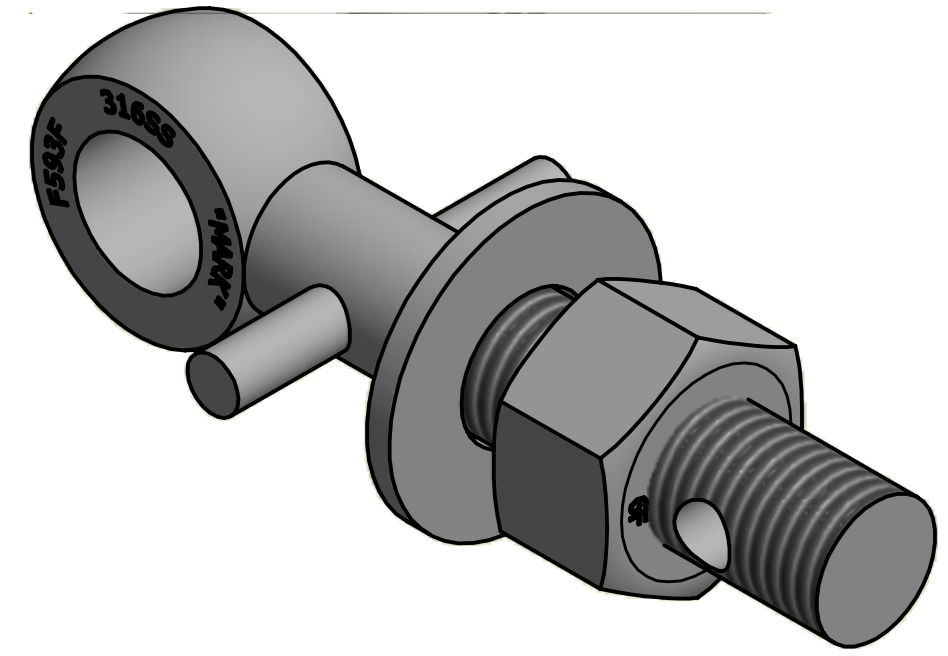


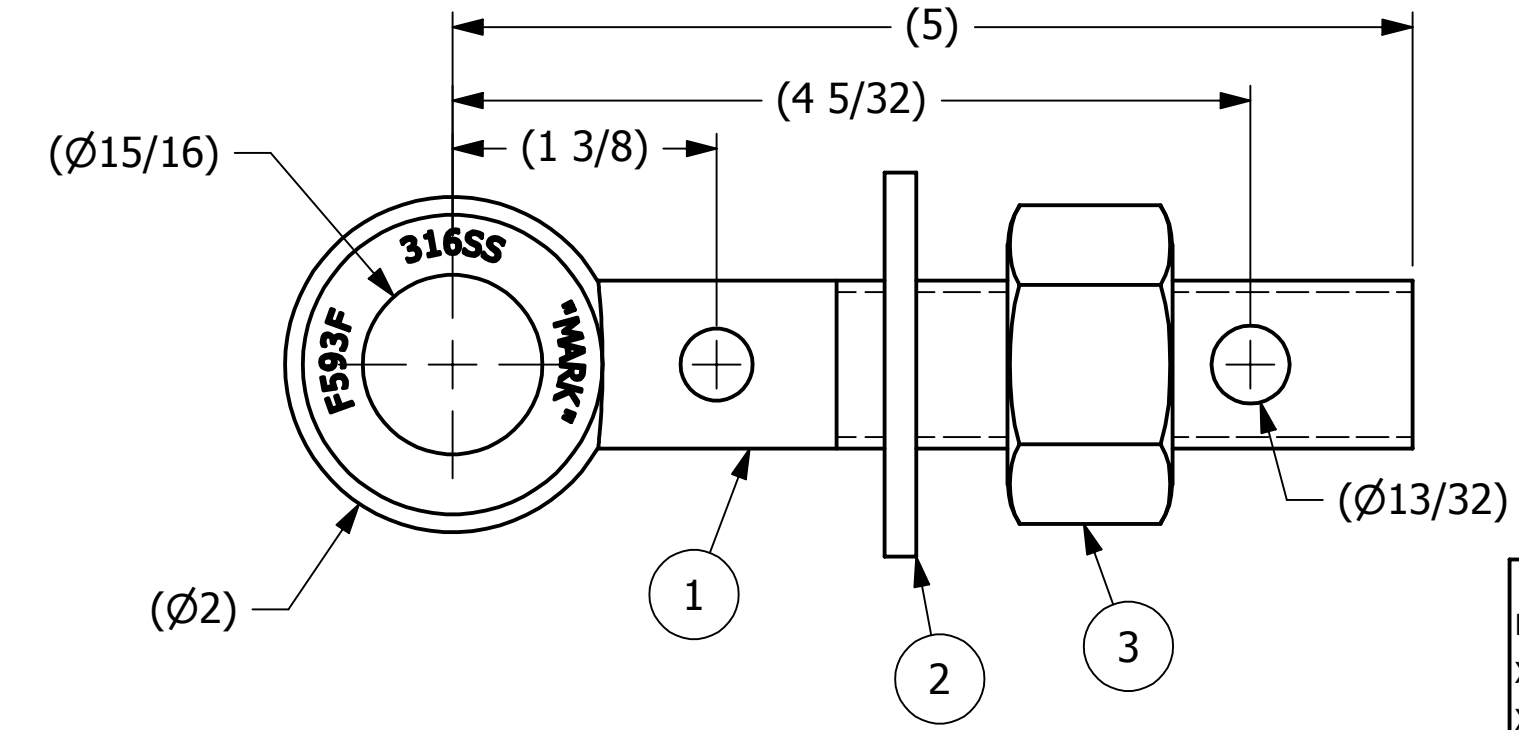
NO.	PART NAME	PART #	REQ'D	MATERIAL
1	EYEBOLT 7/8"X5"	EBR785HS6P	1	316 SS
2	FLAT WASHER 7/8" SAE	WASH78S6	1	316 SS
3	HEAVY HEX NUT 7/8"-9	N78XS6	1	416 SS
4	PIN 3/8"X2 1/2"	PIN375SS	1	316 SS



APPLY A BEAD OF WELD TO THE TWO END THREADS AFTER INSTALLING WASHER AND NUT.



ISOMETRIC VIEW



REV	BY	DATE	DESCRIPTION
C	CHL	12-6-13	REPALCED EBR785HS6PR W/EBR785HS6P REMOVED A16204, ADDED WELD STOP
B	CHL	11-26-01	REPLACED SN14S W/ A16204
A	FOD	8-5-99	UPDATD BOM, ITEM #1 WAS EB785HS6PR

<small>UNLESS OTHERWISE SPECIFIED DIMENSIONAL TOLERANCES</small> FRACTIONAL: ±1/16 X.XX: ±.03 X.XXX: ±.015 ANGULAR: ±1° <small>DEBURR ALL SHARP EDGES. ALL MACHINED SURFACES TO HAVE A 125 RMS FINISH UNLESS NOTED OTHERWISE.</small> THIRD ANGLE PROJECTION	DRAWN BY:	FOD
	CHECKED BY:	SAB
	PROTOTYPE BY:	FOD
	PROTOTYPE DATE:	6/1/1999
	APPROVED FOR PRODUCTION BY:	SAB
	PRODUCTION DATE:	6/1/1999

**SALCO PRODUCTS, INC.**

PART NAME: **EYEBOLT ASSEMBLY 7/8"X5"**

MATERIAL: **SEE BOM**

PROJECT #: \_\_\_\_\_ SHEET #: **1 OF 1** SCALE: **1:1**

DRAWING #: **B13501** PART #: **EB785XHAS6P**

THIS PRINT, PROPERTY OF SALCO PRODUCTS INC., CONTAINS PROPRIETARY INFORMATION AND MUST NOT BE COPIED, REPRODUCED, OR USED DETRIMENTALLY TO OUR INTEREST.