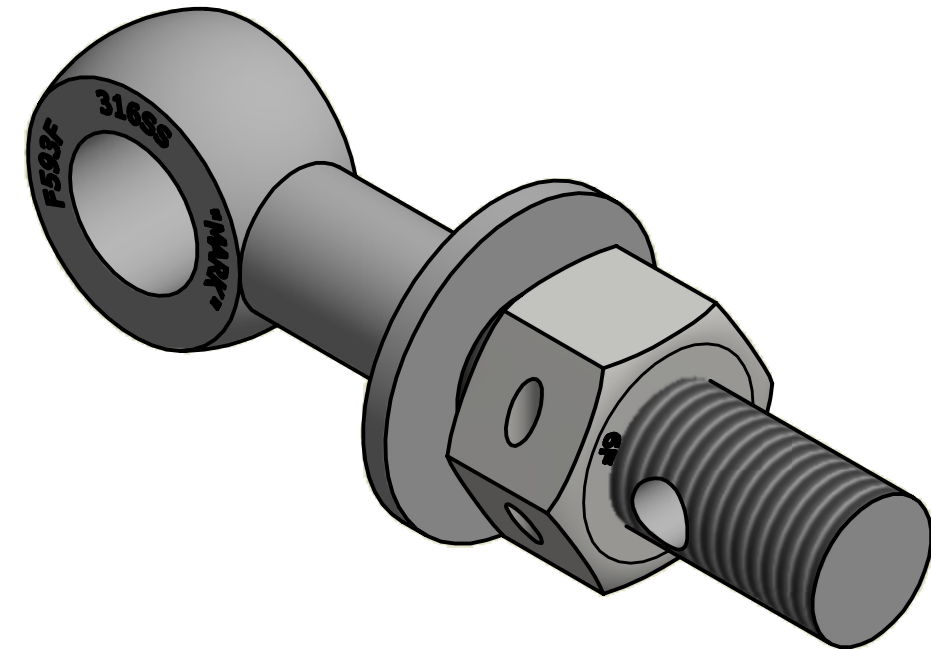
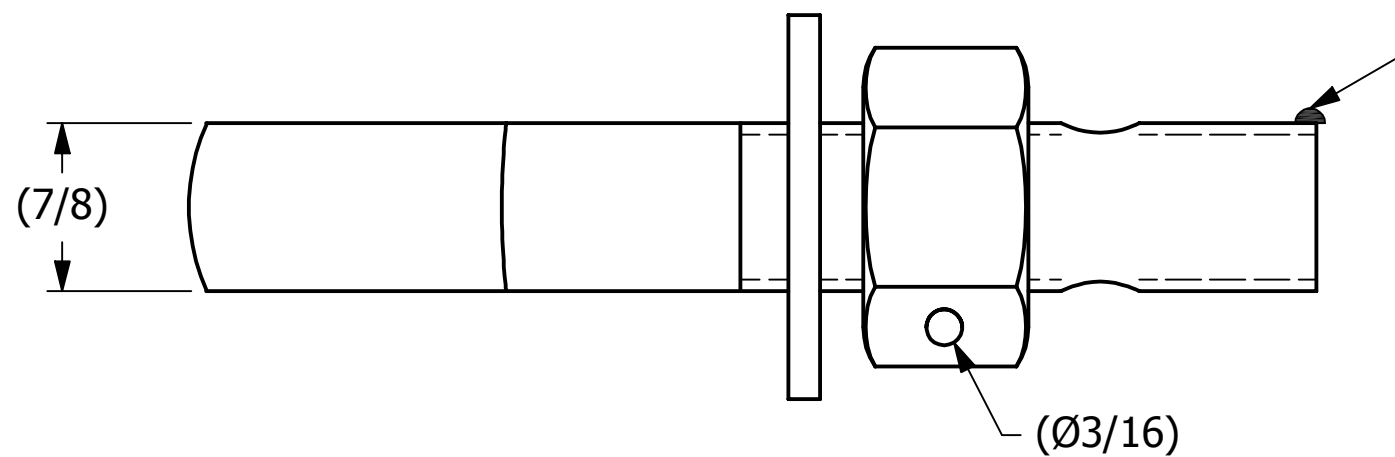
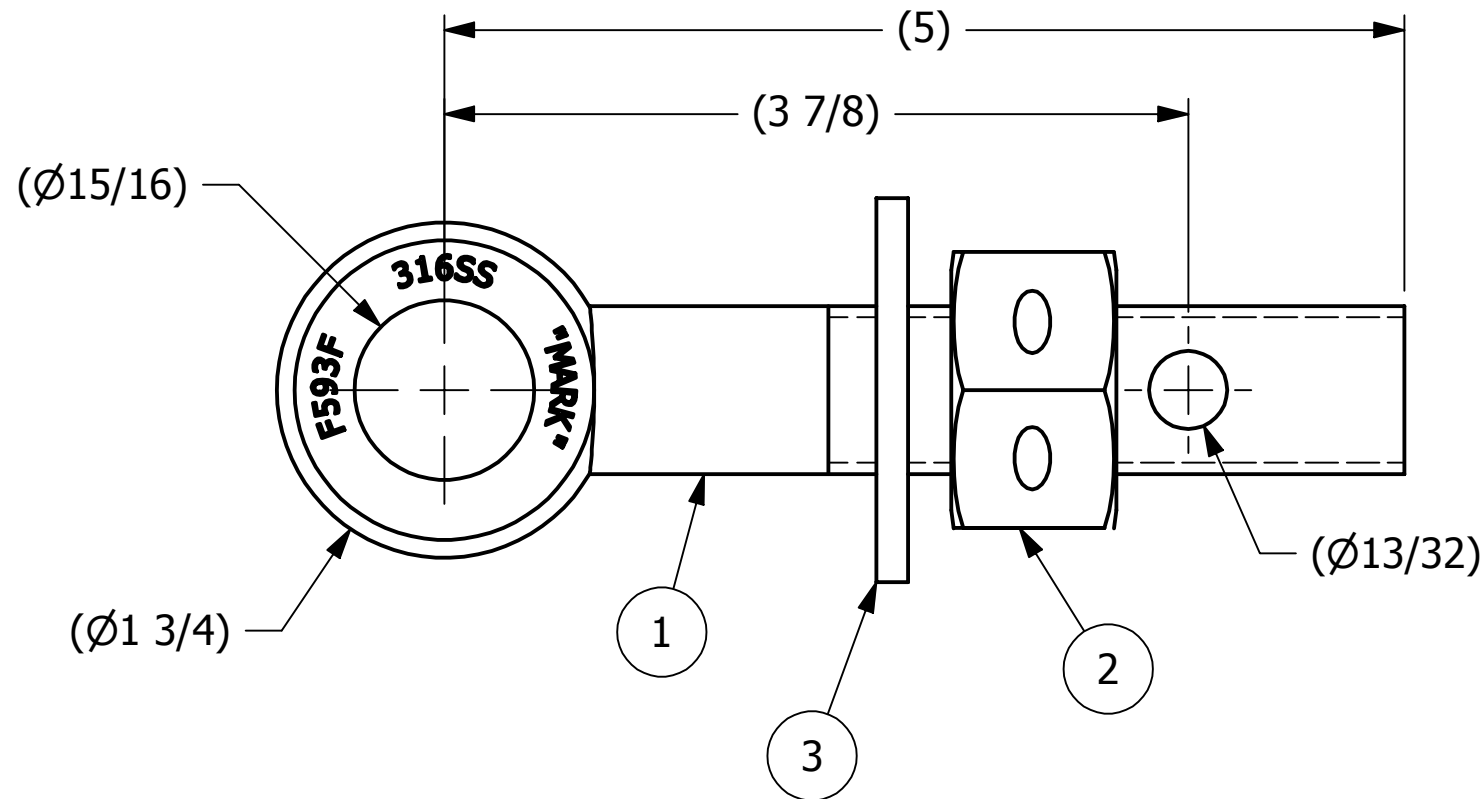


NO.	PART NAME	PART#	REQ'D	MATERIAL
1	EYEBOLT 7/8"X5"	EBR785H3S6	1	316 SS
2	HEAVY HEX NUT 7/8"-9	N78XS6H	1	416 SS
3	FLAT WASHER 7/8" SAE	WASH78S6	1	316 SS



ISOMETRIC VIEW



REV	BY	DATE	DESCRIPTION
B	JJK	12-19-14	UPDATED EYEBOLT OD
A	CHL	4-21-03	ADDED NEW PART TO SYSTEM

UNLESS OTHERWISE SPECIFIED DIMENSIONAL TOLERANCES FRACTIONAL: ±1/16 X.XX: ±.03 X.XXX: ±.015 ANGULAR: ±1° DEBURR ALL SHARP EDGES. ALL MACHINED SURFACES TO HAVE A 125 RMS FINISH UNLESS NOTED OTHERWISE.	DRAWN BY:	CHL
	CHECKED BY:	ACC
	PROTOTYPE BY:	CHL
	PROTOTYPE DATE:	3/24/2003
	APPROVED FOR PRODUCTION BY:	ACC
THIRD ANGLE PROJECTION	PRODUCTION DATE:	3/25/2003

SALCO PRODUCTS, INC.

PART NAME: **EYEBOLT ASSEMBLY 7/8" X 5"**

MATERIAL: **SEE BOM**

PROJECT #: **WAG0004** SHEET #: **1 OF 1** SCALE: **1:1**

DRAWING #: **B17839** PART #: **EB785XHH3AS6**

THIS PRINT, PROPERTY OF SALCO PRODUCTS INC., CONTAINS PROPRIETARY INFORMATION AND MUST NOT BE COPIED, REPRODUCED, OR USED DETRIMENTALLY TO OUR INTEREST.