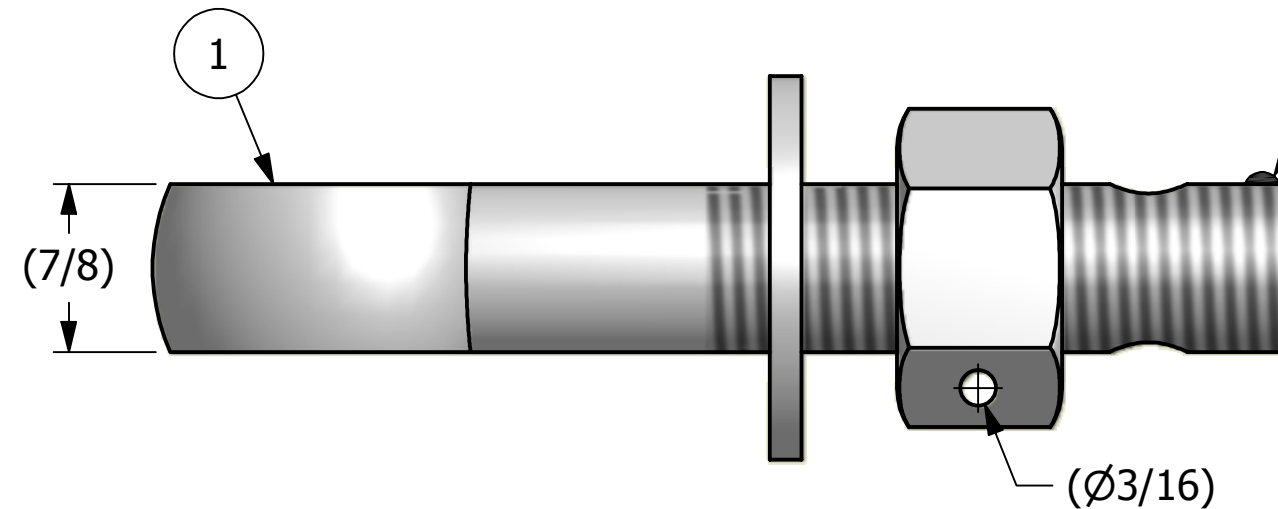
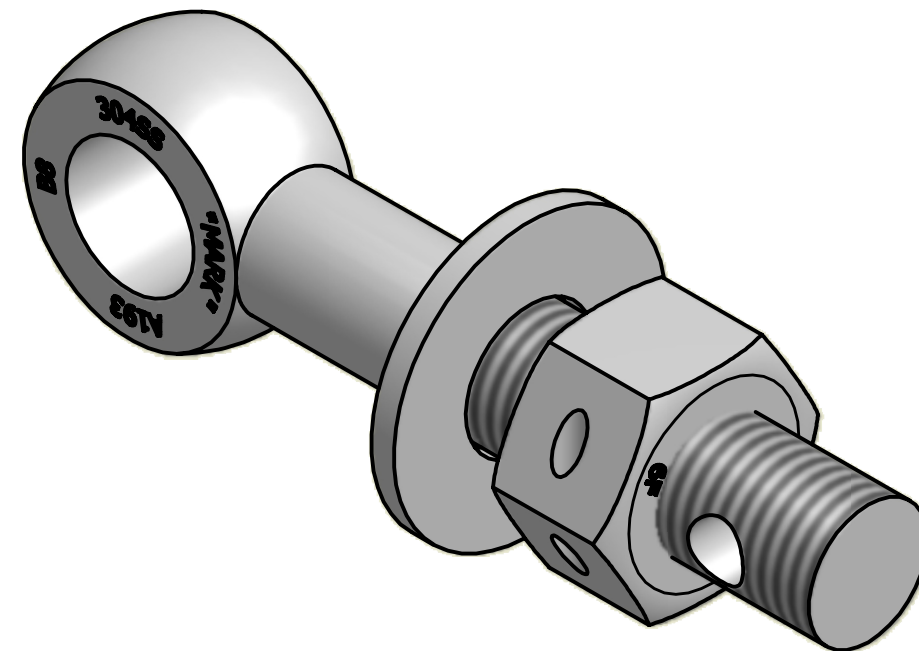


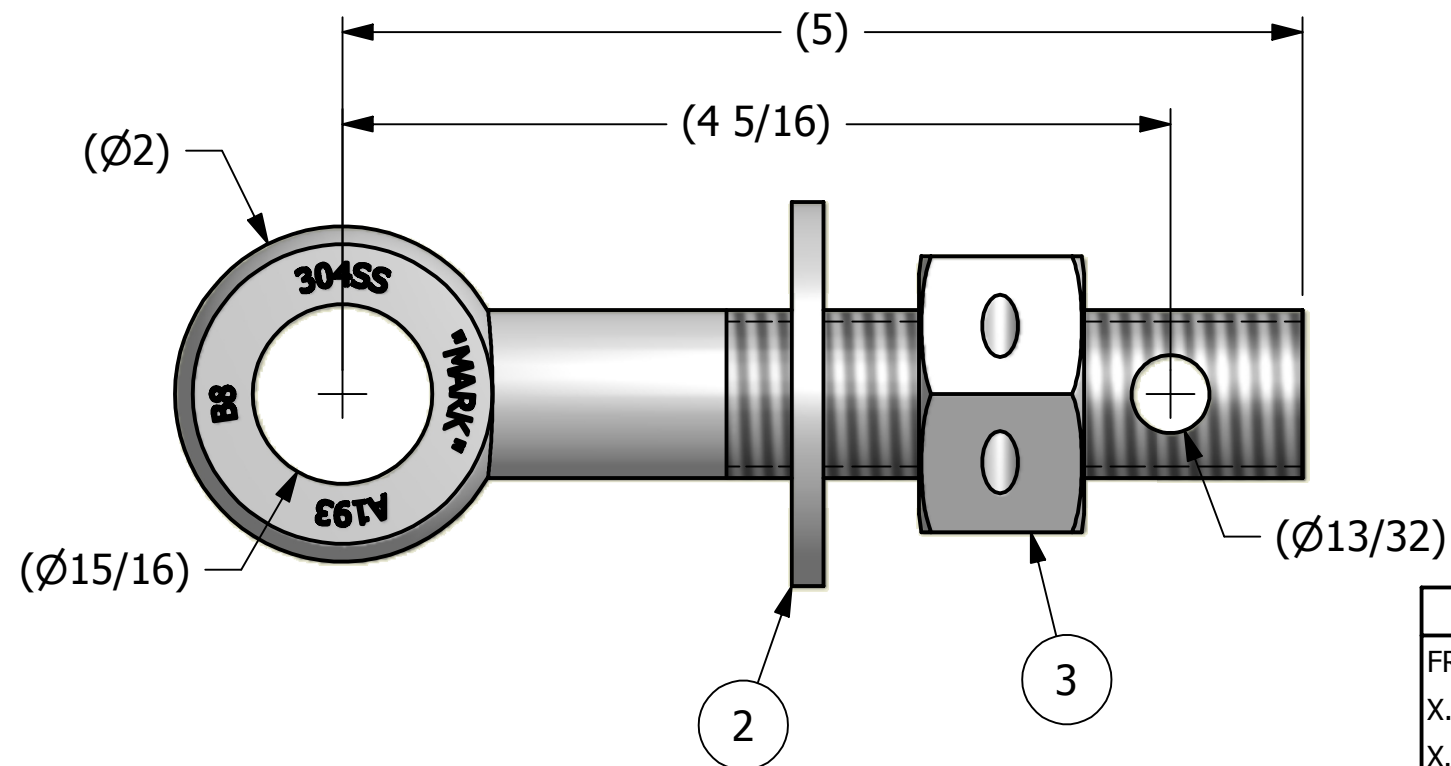
NO.	PART NAME	PART#	REQ'D	MATERIAL
1	EYEBOLT 7/8"X5"	EBR785HS4	1	304 SS
2	FLAT WASHER 7/8" SAE	WASH78S6	1	316 SS
3	HEAVY HEX NUT 7/8"-9	N78XS6H	1	416 SS


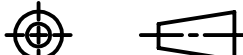


APPLY A BEAD OF WELD TO THE TWO END
THREADS AFTER INSTALLING WASHER AND NUT



ISOMETRIC VIEW



UNLESS OTHERWISE SPECIFIED DIMENSIONAL TOLERANCES	DRAWN BY:	CHL	 SALCO PRODUCTS, INC.		
FRACTIONAL: $\pm 1/16$	CHECKED BY:	VD			
X.XX: $\pm .03$	PROTOTYPE BY:	CHL	PART NAME:		
X.XXX: $\pm .015$			EYEBOLT ASSEMBLY 7/8"X5"		
ANGULAR: $\pm 1^\circ$	PROTOTYPE DATE:	8/26/2009	MATERIAL: SEE BOM		
THIS PRINT, PROPERTY OF SALCO PRODUCTS INC., CONTAINS PROPRIETARY INFORMATION AND MUST NOT BE COPIED, REPRODUCED, OR USED DETRIMENTALLY TO OUR INTEREST.	APPROVED FOR PRODUCTION BY:	VD	PROJECT #:	WAG0721	SHEET #: 1 OF 1
THIRD ANGLE PROJECTION	PRODUCTION DATE:	9/20/2010	DRAWING #:	B17313	PART #:
			EB785XHHAS4		