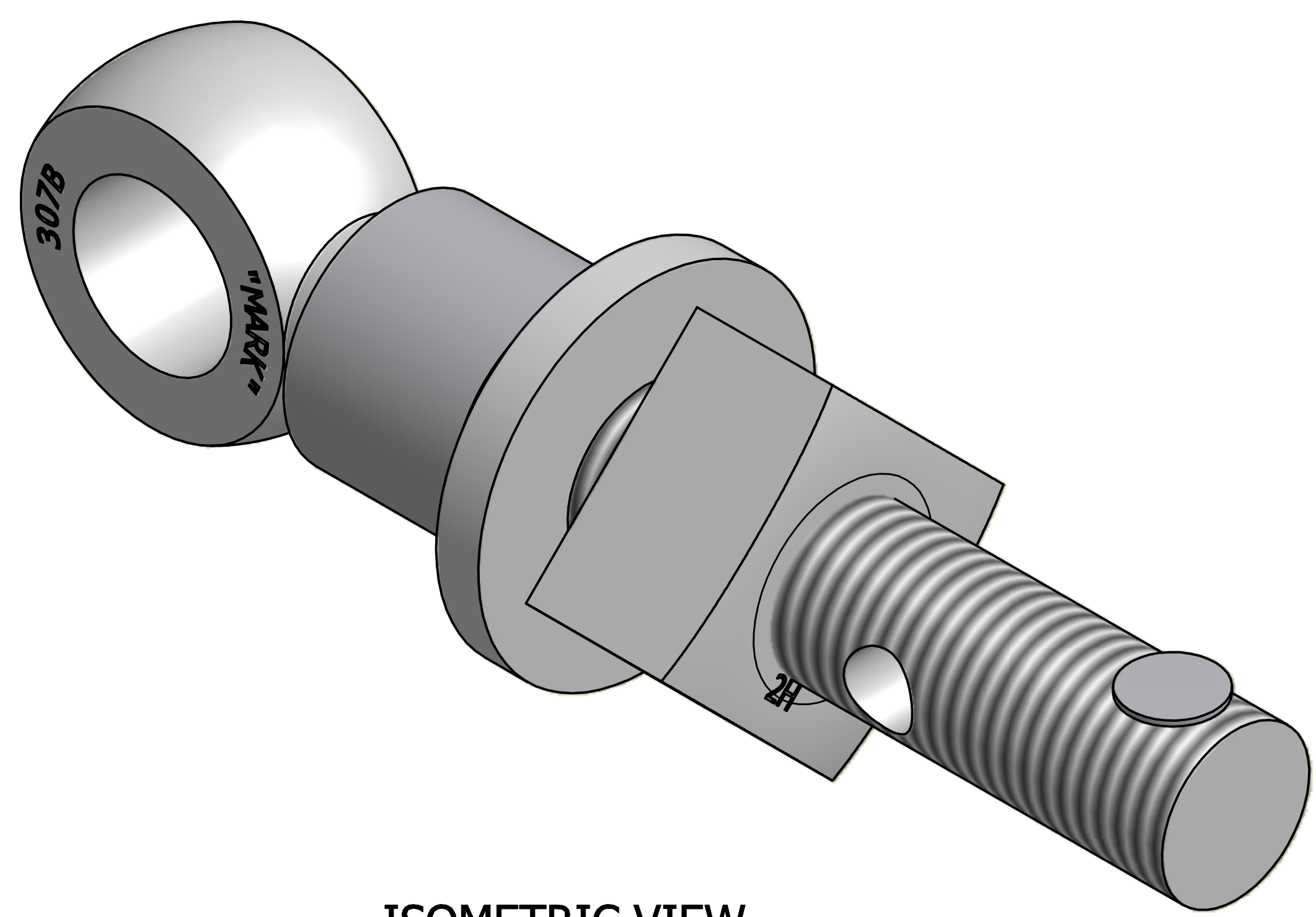
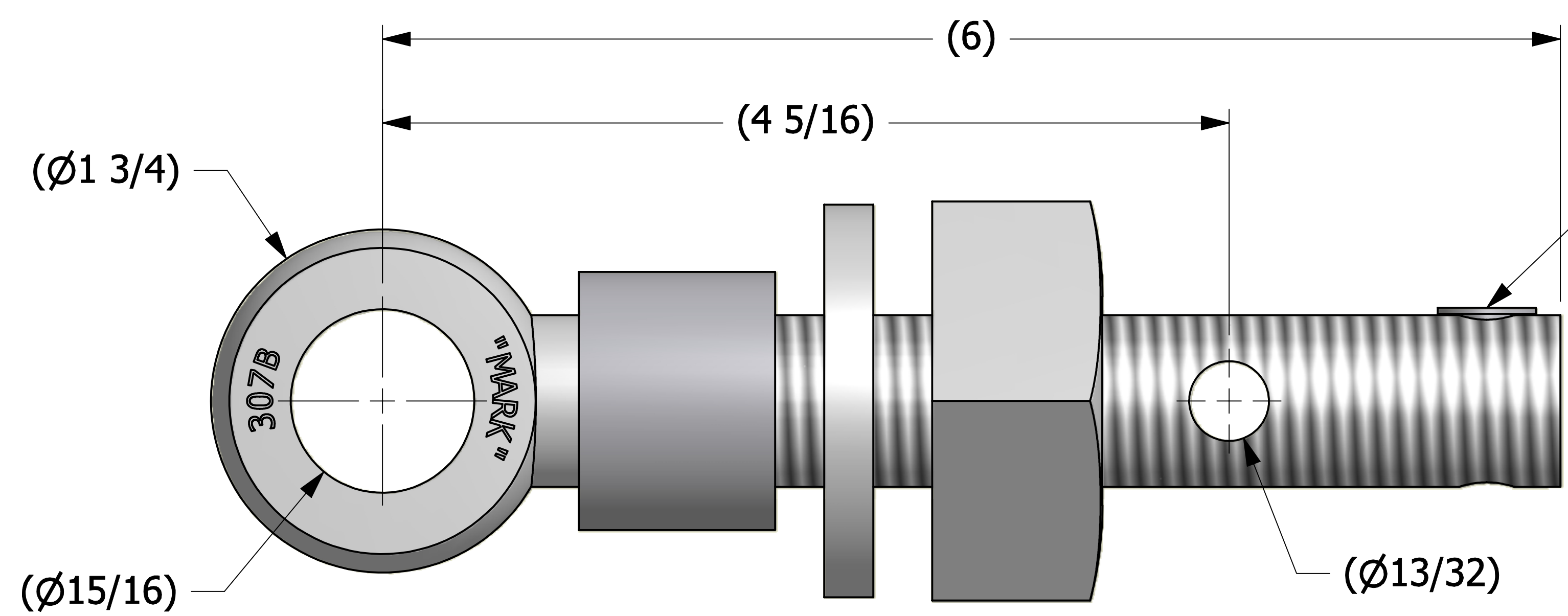
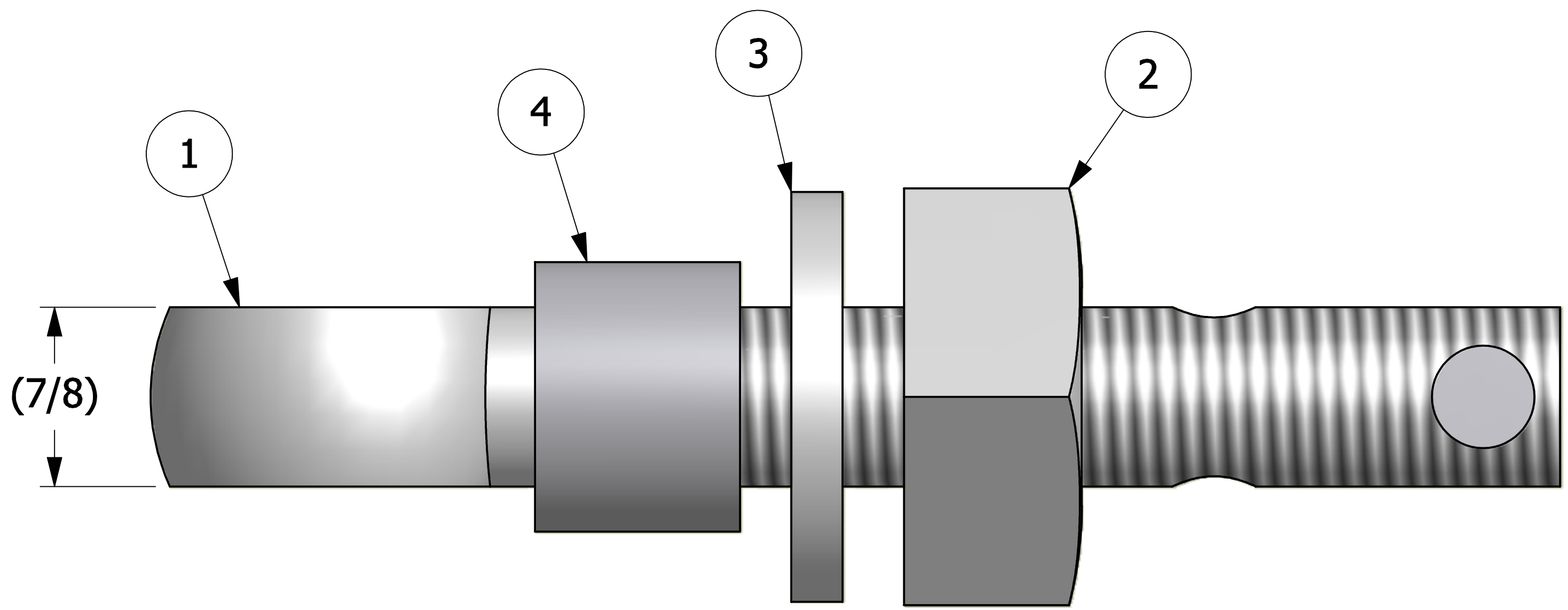


NO.	PART NAME	PART#	REQ'D	MATERIAL
1	EYEBOLT 7/8"X6"	EBR786HR	1	CARBON STEEL
2	HEAVEY SQUARE NUT 7/8"-9	N78	1	CARBON STEEL
3	FLAT WASHER 7/8"	WASH78T	1	CARBON STEEL
4	EYEBOLT SAFETY COLLAR 7/8"	COLLAR1	1	CARBON STEEL
5	HUCK RIVET 1/4"X13/16"	A16204	1	316 SS



ISOMETRIC VIEW

E	BRG	12-17-08	UPDATED EYEBOLT MATERIAL
D	CHL	6-10-02	CHANGED MATERIAL OF WASH78T FROM CS Z/P
C	CHL	11-26-01	REPLACED SN16S WITH A16204
B	CHL	12-20-00	CHANGED WASH516 TO WASH78T & DESCRIPTION
A	FOD	5-26-99	CHANGED PART # ON ITEM #1 WAS EBR786H AND UPDATED DRAWING WITH NEW STANDARDS
REV	BY	DATE	DESCRIPTION

UNLESS OTHERWISE SPECIFIED DIMENSIONAL TOLERANCES	DRAWN BY:	TJN
FRACTIONAL: ±1/16	CHECKED BY:	
X.XX: ±.03	PROTOTYPE BY:	TJN
X.XXX: ±.015	PROTOTYPE DATE:	2/12/1993
ANGULAR: ±1°	APPROVED FOR PRODUCTION BY:	TJN
THIS PRINT, PROPERTY OF SALCO PRODUCTS INC, CONTAINS PROPRIETARY INFORMATION AND MUST NOT BE COPIED, REPRODUCED, OR USED DETRIMENTALLY TO OUR INTEREST.	PRODUCTION DATE:	2/12/1993
THIRD ANGLE PROJECTION		

SALCO PRODUCTS, INC.

PART NAME: **EYEBOLT ASSEMBLY 7/8"X6"**

MATERIAL: **SEE BOM**

PROJECT #: **1 OF 1** SCALE: **1:2**

DRAWING #: **D5386** PART #: **EB786HAC**