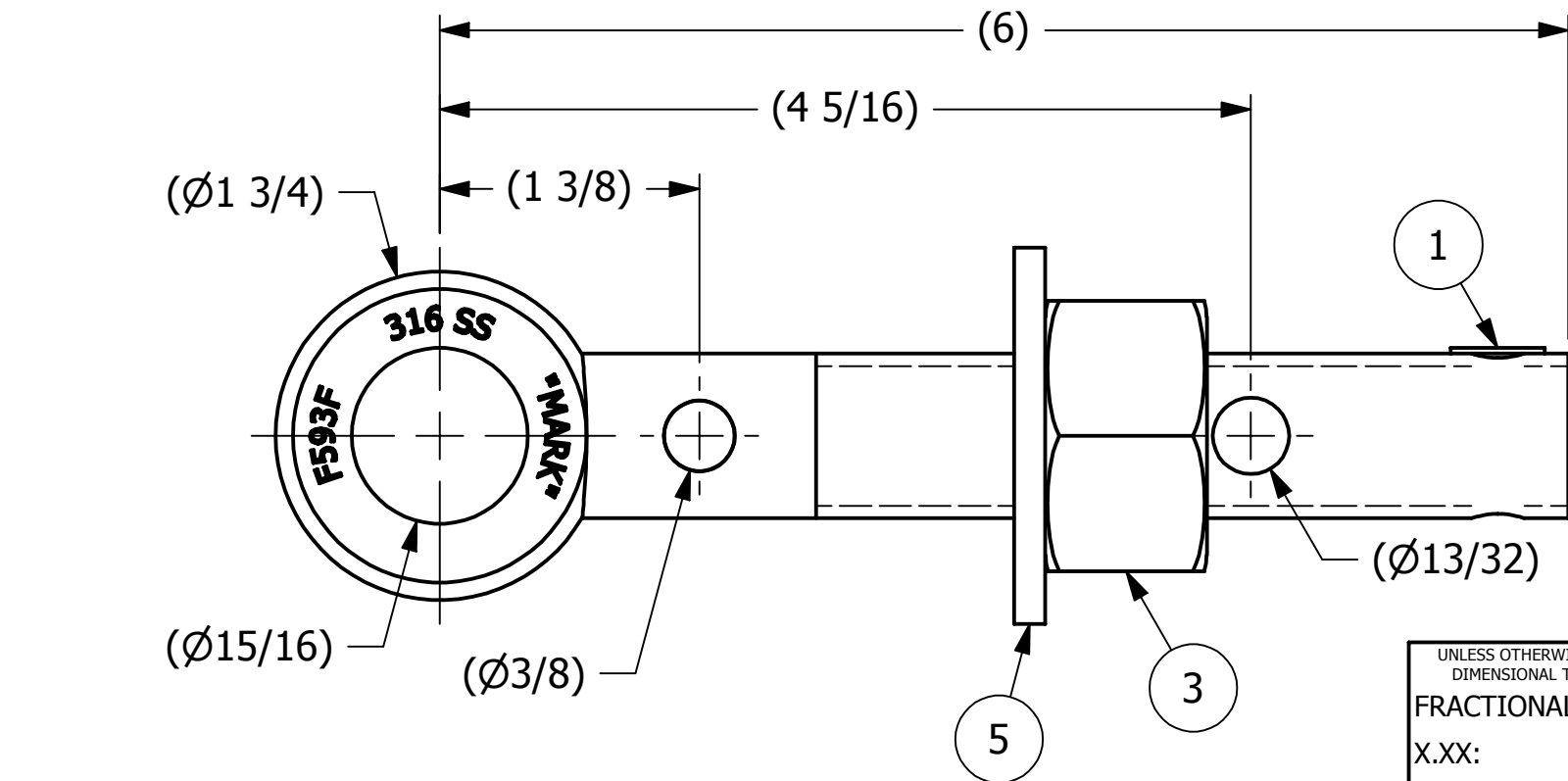
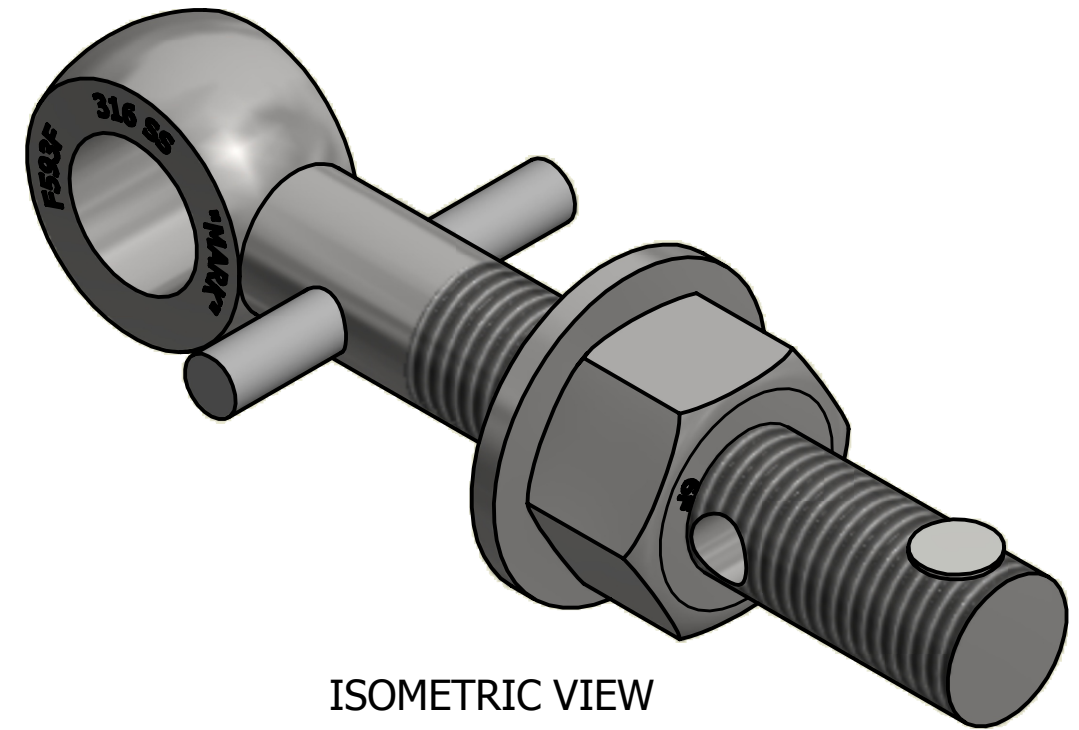
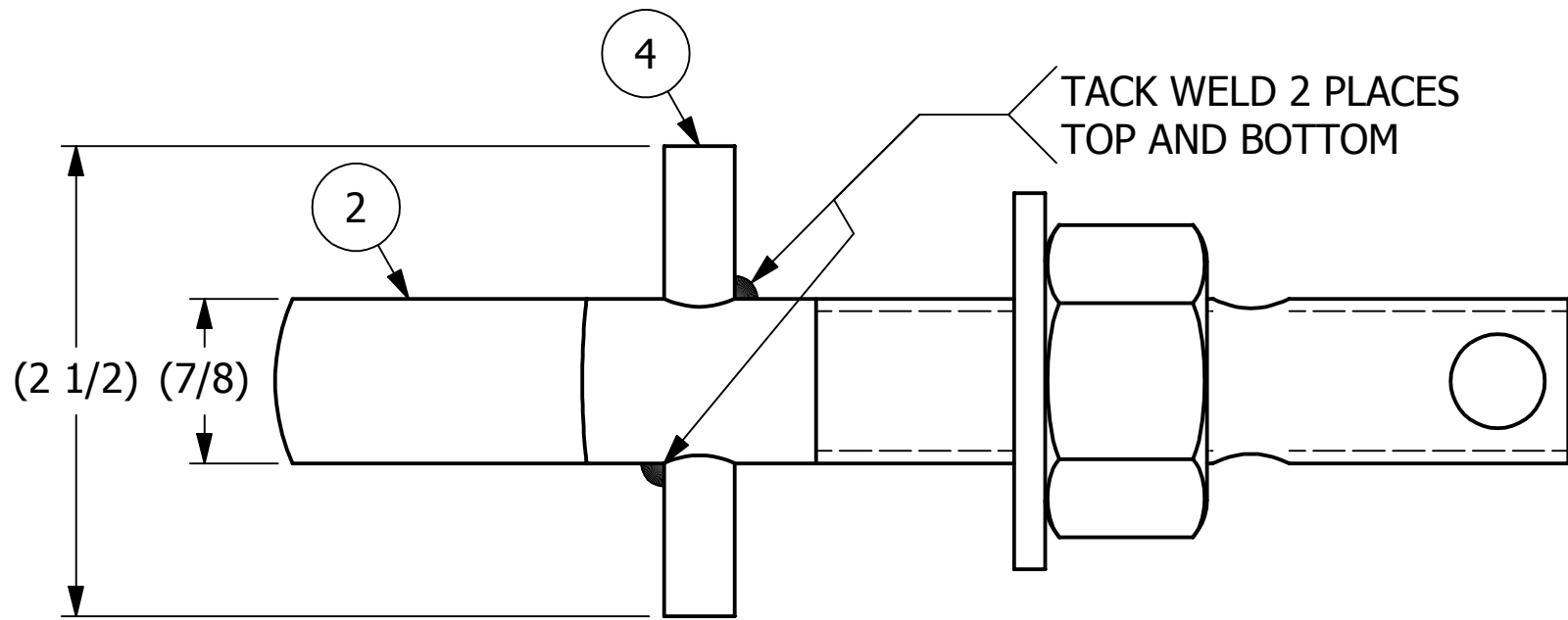


NO	PART NAME	PART#	REQ'D	MATERIAL
1	HUCK RIVET 1/4"X13/16"	A16204	1	304 SS
2	EYEBOLT 7/8"X6"	EBR786HS6PR	1	316 SS
3	HEAVY HEX NUT 7/8"-9	N78XS6	1	416 SS
4	PIN 3/8"X2 1/2"	PIN375SS	1	316 SS
5	FLAT WASHER 7/8" SAE	WASH78S6	1	316 SS



REV	BY	DATE	DESCRIPTION
B	JG	10-10-16	WASH78S6 WAS WASH78S4
A	CHL	11-26-01	REPLACED SN14S W/ A16204

UNLESS OTHERWISE SPECIFIED DIMENSIONAL TOLERANCES FRACTIONAL: ±1/16 X.XX: ±.03 X.XXX: ±.015 ANGULAR: ±1° DEBURR ALL SHARP EDGES. ALL MACHINED SURFACES TO HAVE A 125 RMS FINISH UNLESS NOTED OTHERWISE. THIRD ANGLE PROJECTION	DRAWN BY:	FOD
	CHECKED BY:	SAB
	PROTOTYPE BY:	FOD
	PROTOTYPE DATE:	6/8/1999
	APPROVED FOR PRODUCTION BY:	SAB
	PRODUCTION DATE:	6/8/1999

SALCO PRODUCTS, INC.

PART NAME: **EYEBOLT ASSEMBLY 7/8"X6"**

MATERIAL: **SEE BOM**

PROJECT #: SHEET #: 1 OF 1 SCALE: 1:1

DRAWING #: **B13517** PART #: **EB786XHAS6P**

THIS PRINT, PROPERTY OF SALCO PRODUCTS INC., CONTAINS PROPRIETARY INFORMATION AND MUST NOT BE COPIED, REPRODUCED, OR USED DETRIMENTALLY TO OUR INTEREST.