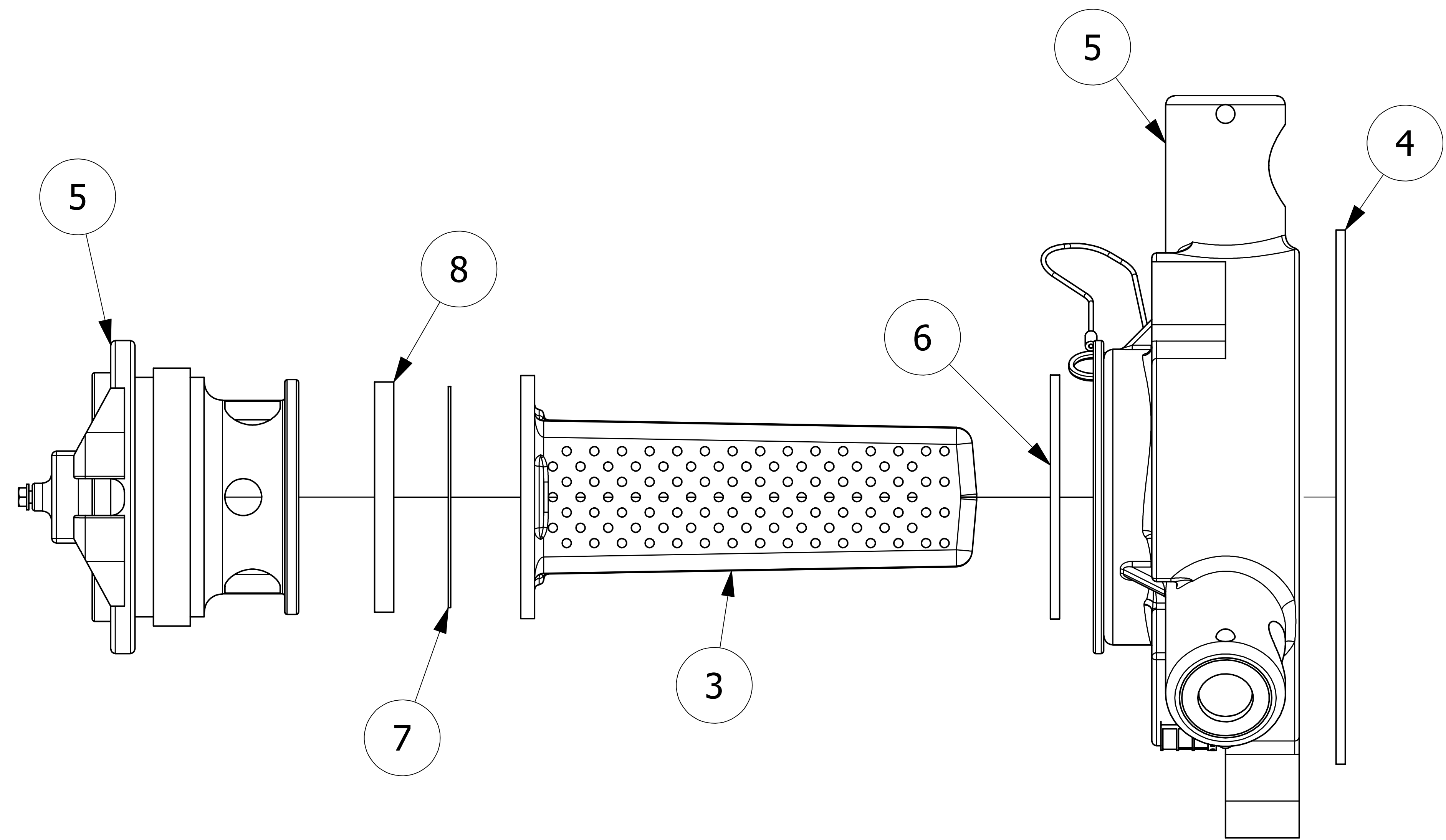


NO	PART NAME	PART#	REQ'D	MATERIAL
1	ID PLATE 3" X 3/4"	A15152	.5	ALUMINUM
2	DRIVE SCREW TYPE U #2 X 1/8"	DR218	2	18-8 SS
3	SURGE PROTECTOR	DSP3313	1	NORYL
4	QUICK INSPECT FLANGE GASKET	FG550V	1	BLACK VITON A
5	QUICK INSPECT SAFETY VENT	QI261BSA	1	BLACK NORYL
6	QI RETAINER GASKET	QI261G6	1	BLACK VITON A
7	QI RUPTURE DISK GASKET	QI261RDG6	1	BLACK VITON A
8	RUPTURE DISC (SOLD SEPARATLEY)			



**NOTES:**

1. CUSTOMERS RESPONSIBILITY FOR COMPATIBILITY OF COMMODITY.
2. AAR APPROVAL # PRD-162102.
3. SEE DOCUMENT QAP5A-1 FOR MARKING PROCEDURE.
4. FASTEN ID PLATE WITH DRIVE SCREWS.

L	JG	1-31-17	AAR APPROVAL # WAS SRD-063000
K	TAK	8-27-13	ADDED A15152, DR218 & QAP5A-1 NOTE
J	ACC	8-10-06	UPDATED DESCRIPTION AND AAR APPROVAL#
I	MRC	8/31/00	REMOVED CHART, UPDATED TO CURRENT STANDARDS
REV	BY	DATE	DESCRIPTION

UNLESS OTHERWISE SPECIFIED DIMENSIONAL TOLERANCES FRACTIONAL: ±1/16 X.XX: ±.03 X.XXX: ±.015 ANGULAR: ±1° DEBURR ALL SHARP EDGES. ALL MACHINED SURFACES TO HAVE A 125 RMS FINISH UNLESS NOTED OTHERWISE. THIRD ANGLE PROJECTION	DRAWN BY:	CLH
	CHECKED BY:	
	PROTOTYPE BY:	CLH
	PROTOTYPE DATE:	2/9/1998
	APPROVED FOR PRODUCTION BY:	CLH
	PRODUCTION DATE:	2/9/1998

<b>SALCO PRODUCTS, INC.</b>		
<b>QUICK INSPECT SAFETY VENT</b>		
SEE BOM		
PROJECT #:	SHEET #:	SCALE:
	1 OF 1	1:1
DRAWING #:	PART #:	
<b>E14933</b>	<b>QI2616A</b>	