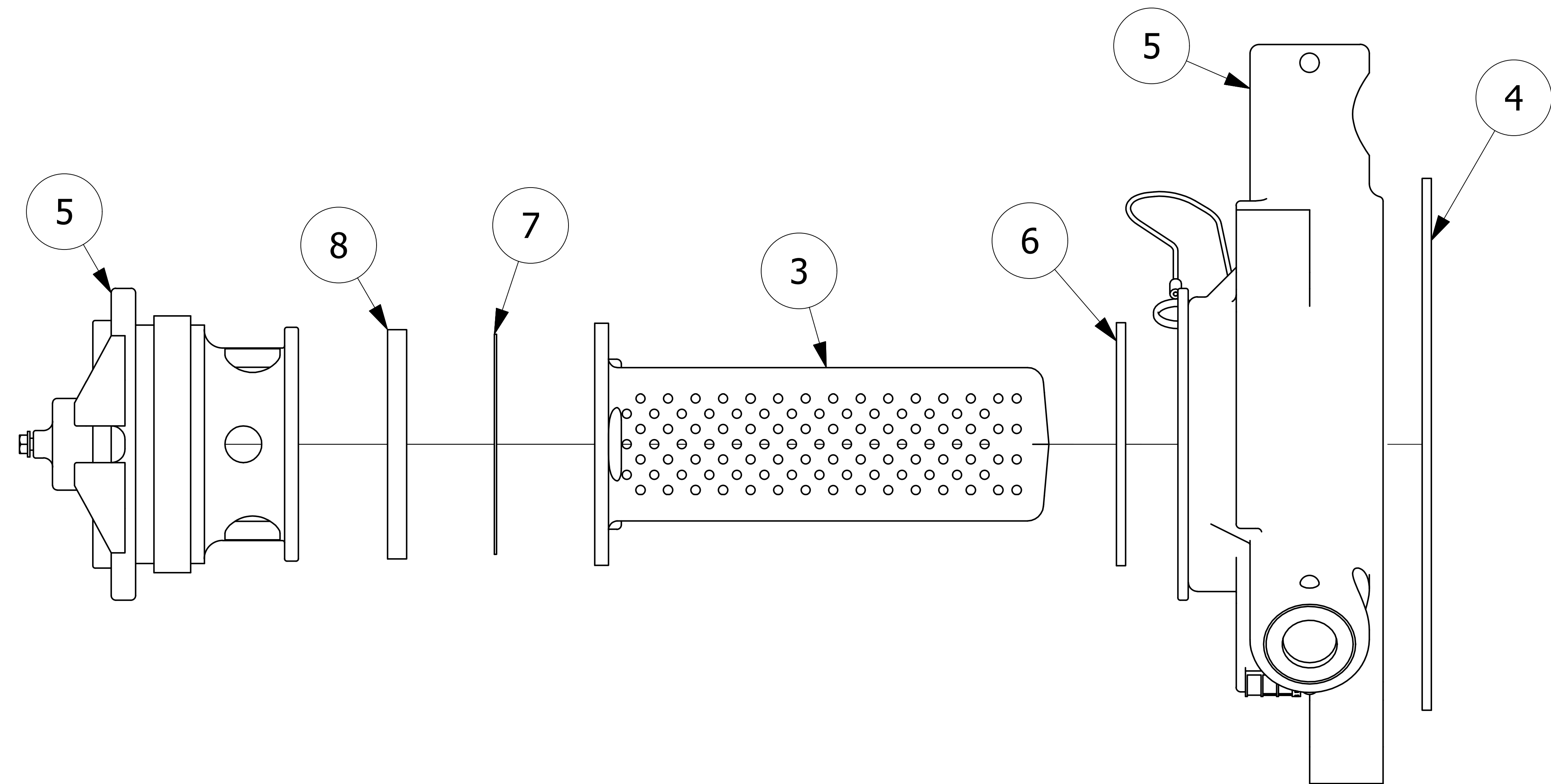


NO	PART NAME	PART#	REQ'D	MATERIAL
1	ID PLATE 3" X 3/4"	A15152	.5	ALUMINUM
2	DRIVE SCREW TYPE U #2 X 1/8"	DR218	2	18-8 SS
3	SURGE PROTECTOR	DSP3313SS6	1	316 SS
4	QUICK INSPECT FLANGE GASKET	FG550V	1	BLACK VITON A
5	QUICK INSPECT SAFETY VENT	QI261BSA	1	BLACK NORYL
6	QI RETAINER GASKET	QI261G6	1	BLACK VITON A
7	QI RUPTURE DISK GASKET	QI261RDG6	1	BLACK VITON A
8	RUPTURE DISC (SOLD SEPARATELY)			



NOTES:

1. CUSTOMERS RESPONSIBILITY FOR COMPATIBILITY OF COMMODITY.
2. AAR APPROVAL # PRD-162102.
3. SEE DOCUMENT Q-2.14 FOR MARKING PROCEDURE.
4. FASTEN ID PLATE WITH DRIVE SCREWS.

D	WEB	12/17/21	Q-2.14 WAS QAP5A-1; UPDATED TITLE BLOCK
C	JG	2/7/17	AAR APPROVAL # WAS SRD-063000
B	TAK	8/27/13	ADDED A15152, DR218 & QAP5A-1 NOTE
A	AJB	12/28/06	CHANGED AAR APPROVAL NO.
REV	BY	DATE	DESCRIPTION

UNLESS OTHERWISE SPECIFIED DIMENSIONAL TOLERANCES FRACTIONAL: ±1/16 X.XX: ±.03 X.XXX: ±.015 ANGULAR: ±1° DEBURR ALL SHARP EDGES. ALL MACHINED SURFACES TO HAVE A 125 RMS FINISH UNLESS NOTED OTHERWISE. THIRD ANGLE PROJECTION	DRAWN BY:	MRC
	CHECKED BY:	CLH
	PROTOTYPE DATE:	7/27/2000
	APPROVED FOR PRODUCTION BY:	CLH
	PRODUCTION DATE:	7/27/2000
	SIZE:	E
DRAWING #:	14843	

SALCO PRODUCTS, INC.

QUICK INSPECT SAFETY VENT

SEE BOM

SHEET #: **1 OF 1** SCALE: **1 : 1**

QI2616SSA