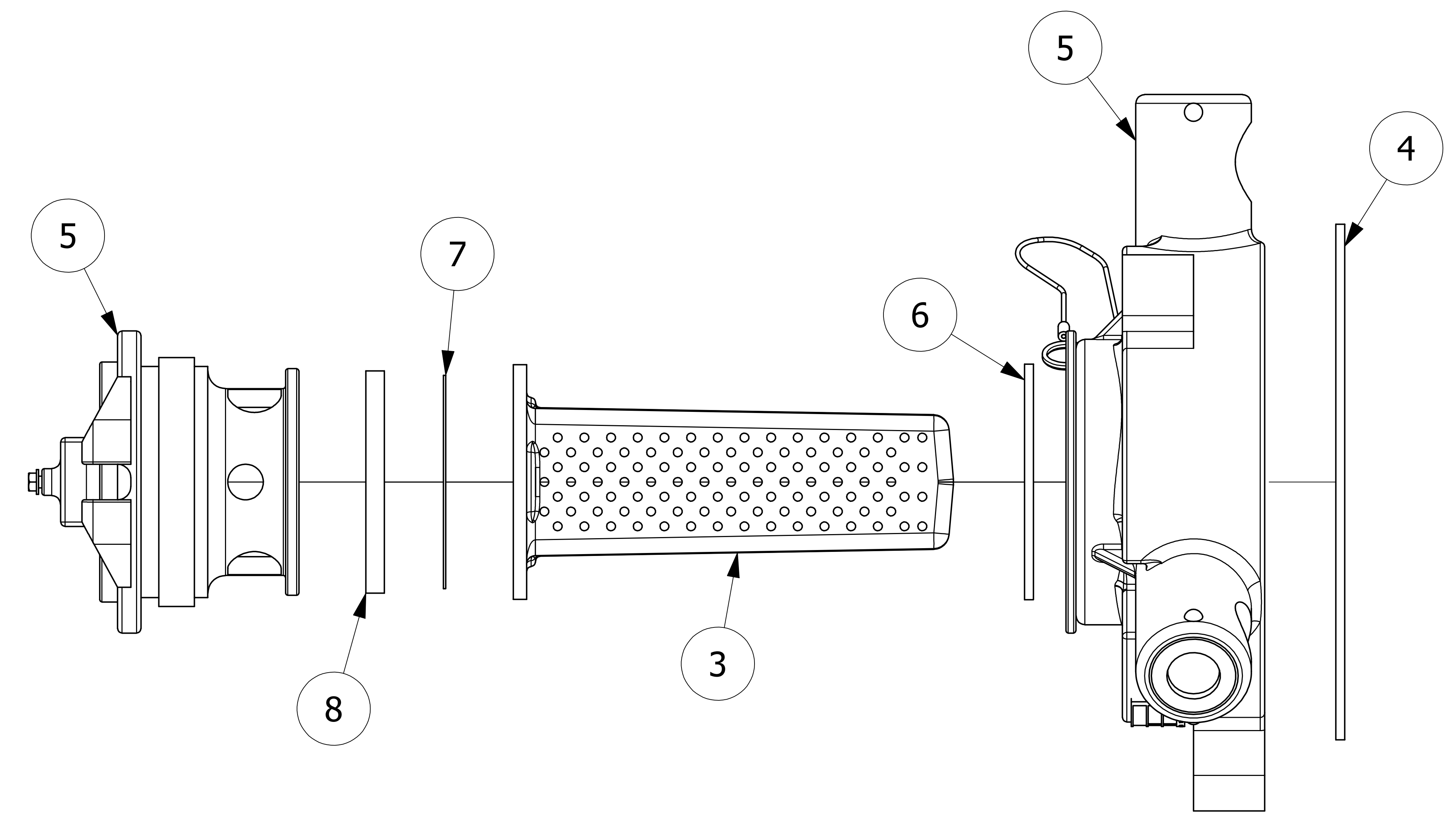
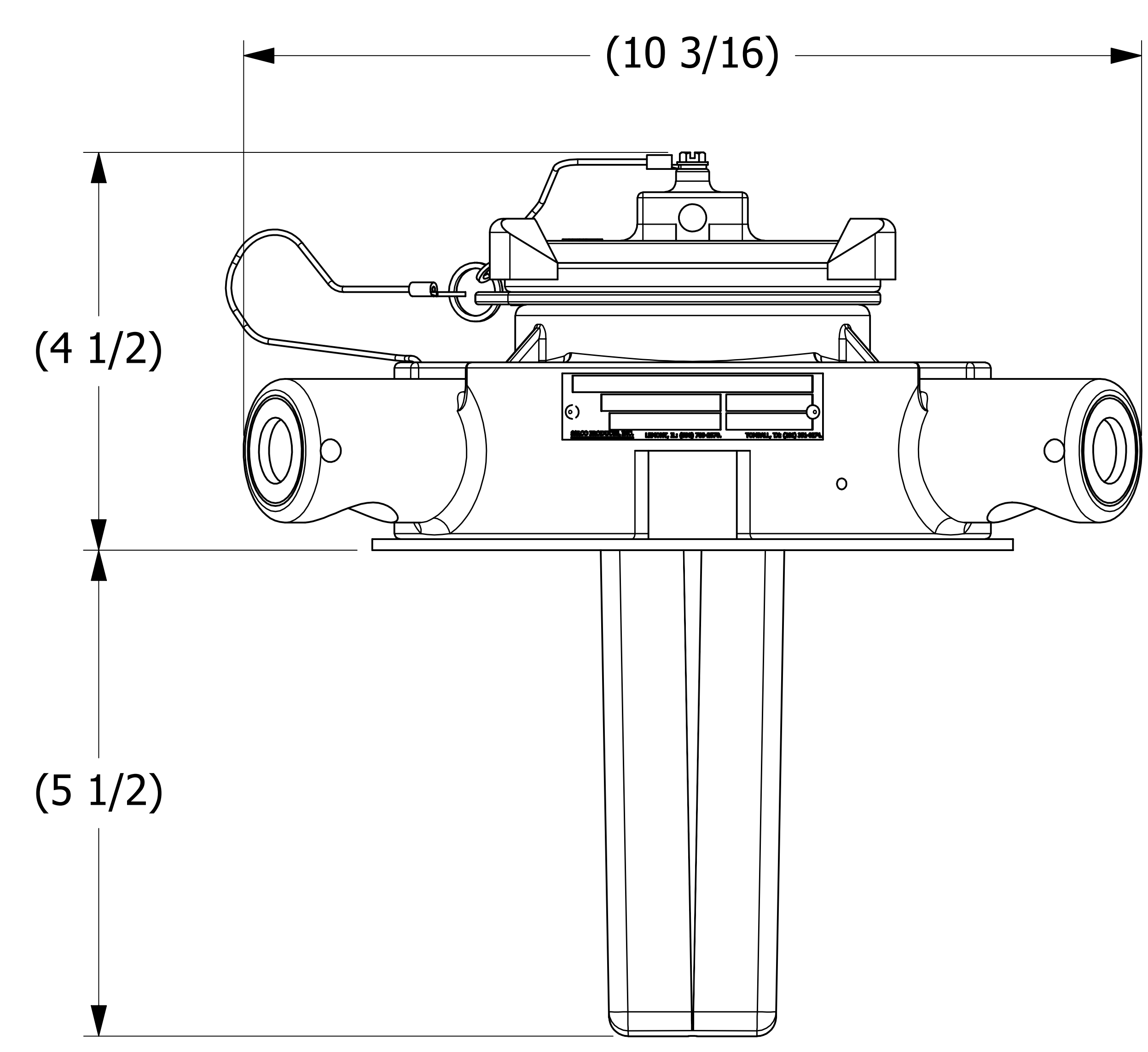
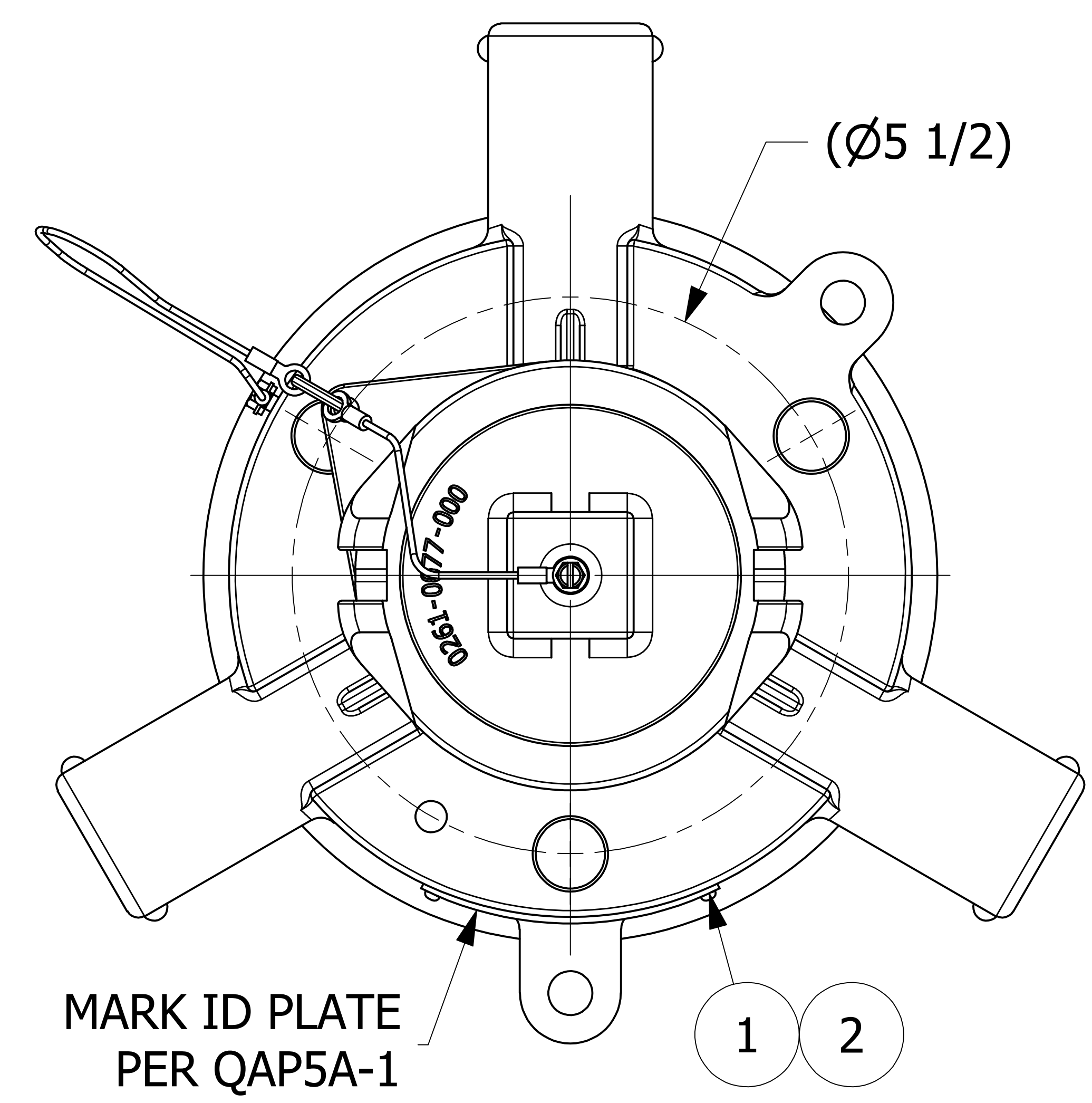


NO	PART NAME	PART#	REQ'D	MATERIAL
1	ID PLATE 3" X 3/4"	A15152	.5	ALUMINUM
2	DRIVE SCREW TYPE U #2 X 1/8"	DR218	2	18-8 SS
3	SURGE PROTECTOR	DSP3313R	1	RYTON
4	QUICK INSPECT FLANGE GASKET	FG5501	1	BLACK NITRILE
5	QUICK INSPECT SAFETY VENT	QI261BSA	1	BLACK NORYL
6	QI RETAINER GASKET	QI261G1	1	BLACK NITRILE
7	QI RUPTURE DISK GASKET	QI261RDG1	1	BLACK NITRILE
8	RUPTURE DISC (SOLD SEPARATELY)			



- NOTES:**
1. CUSTOMERS RESPONSIBILITY FOR COMPATIBILITY OF COMMODITY.
 2. AAR APPROVAL # PRD-162102.
 3. SEE DOCUMENT QAP5A-1 FOR MARKING PROCEDURE.
 4. FASTEN ID PLATE WITH DRIVE SCREWS.

D	JG	12-15-16	AAR APPROVAL # WAS SRD-063000
C	TAK	9-16-13	ADDED A15152, DR218 & QAP5A-1 NOTE
B	AJB	12-28-06	CHANGED AAR APPROVAL NO.
A	CHL	3-15-06	NEW PART ADDED TO SYSTEM
REV	BY	DATE	DESCRIPTION

UNLESS OTHERWISE SPECIFIED DIMENSIONAL TOLERANCES FRACTIONAL: ±1/16 X.XX: ±.03 X.XXX: ±.015 ANGULAR: ±1° DEBURR ALL SHARP EDGES. ALL MACHINED SURFACES TO HAVE A 125 RMS FINISH UNLESS NOTED OTHERWISE. THIRD ANGLE PROJECTION	DRAWN BY:	CHL
	CHECKED BY:	ACC
	PROTOTYPE BY:	CHL
	PROTOTYPE DATE:	2/9/1998
	APPROVED FOR PRODUCTION BY:	CLH
	PRODUCTION DATE:	2/9/1998

SALCO PRODUCTS, INC.

QUICK INSPECT SAFETY VENT

MATERIAL: **SEE BOM**

PROJECT #: **011025** SHEET #: **1 OF 1** SCALE: **1:1**

DRAWING #: **E8565** PART #: **QI261R1A**