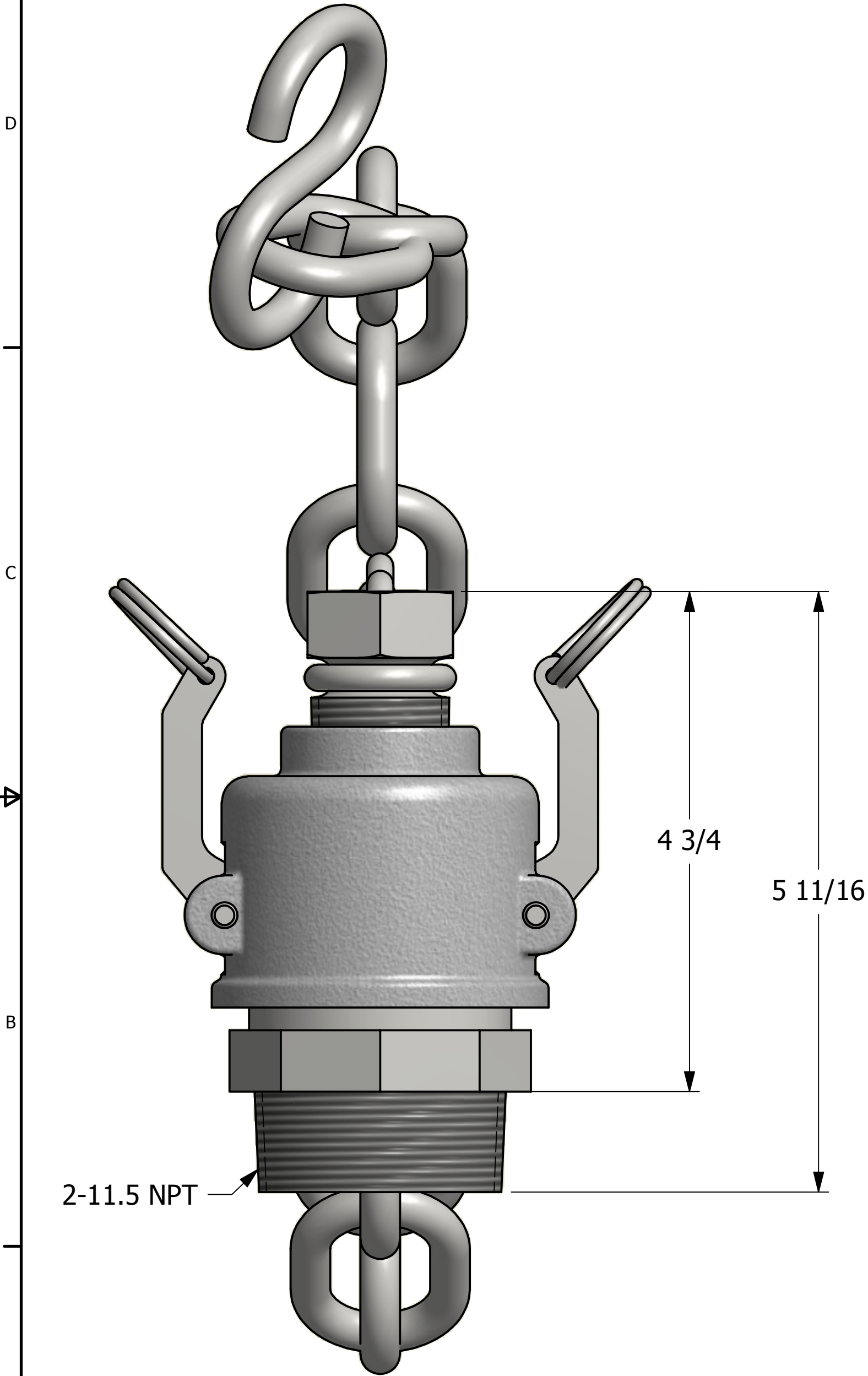
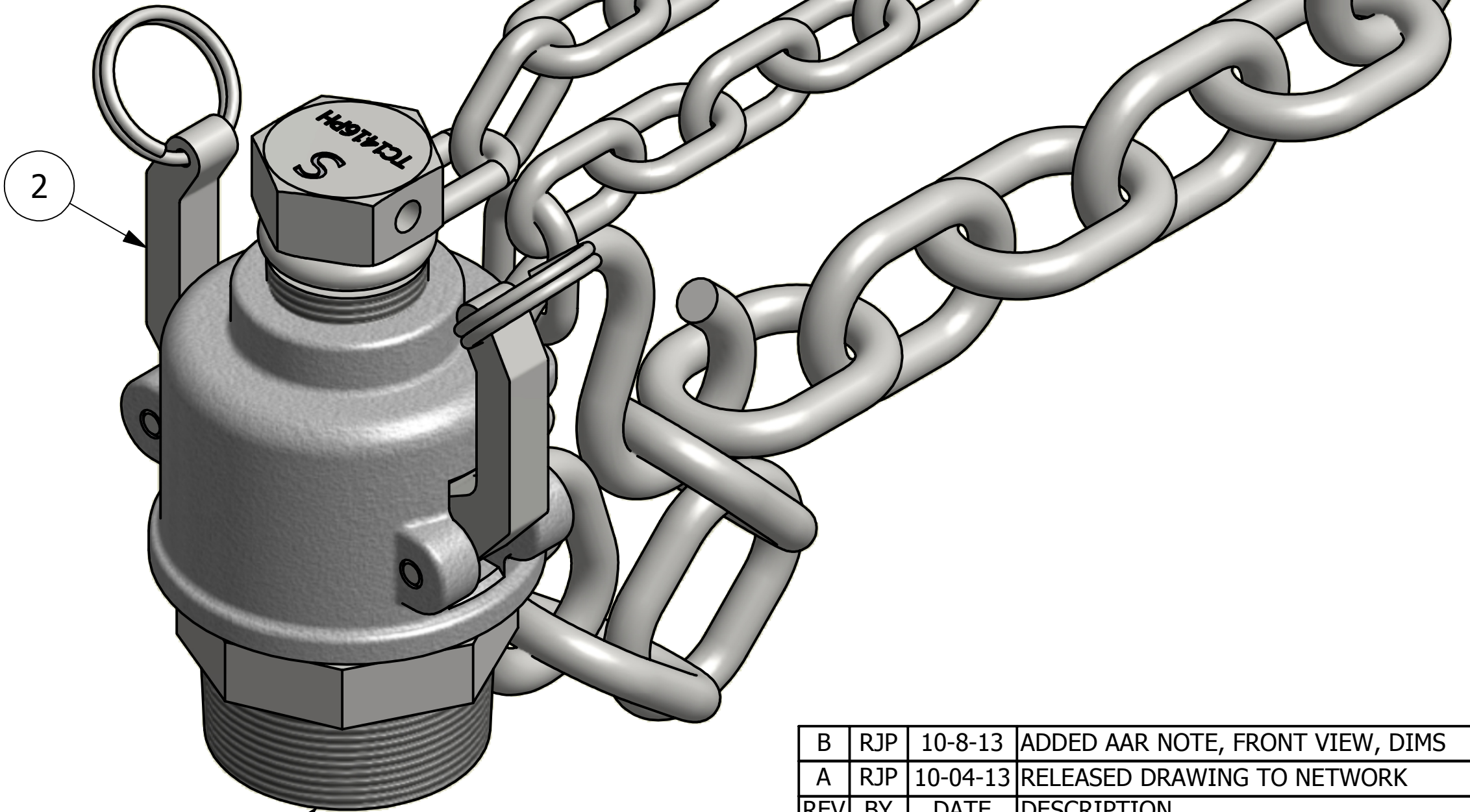
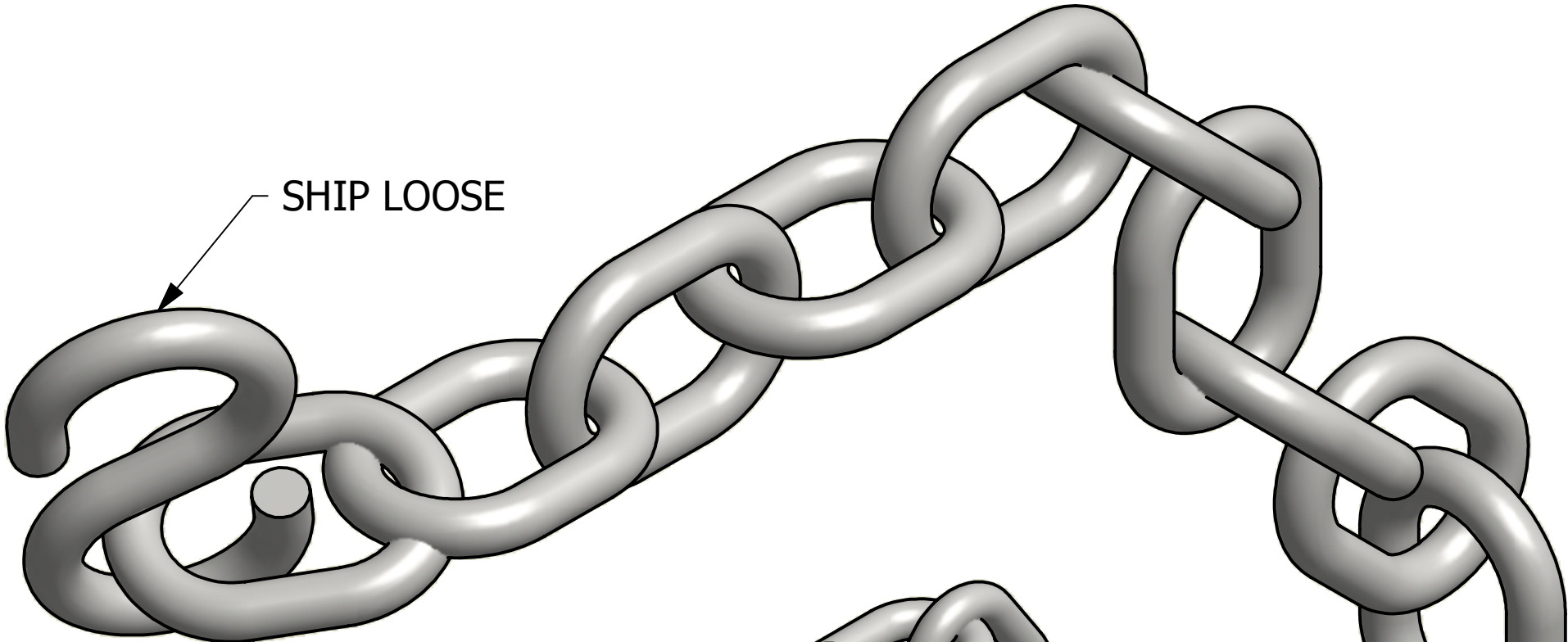


NO.	PART NAME	PART #	REQ'D	MATERIAL
1	QUICK CONNECT ADAPTER 2" THREAD ON	K2SMPA	1	316 SS
2	QUICK CONNECT CAP 2" KAMMED	K2SDC17A	1	316 SS




- NOTES:
1. HARDWARE IS SS.
 2. GASKET IS WHITE EPDM.
 3. AAR APPROVAL # E-139514.



1

UNLESS OTHERWISE SPECIFIED DIMENSIONAL TOLERANCES	DRAWN BY:	CHL
FRACTIONAL: $\pm 1/16$	CHECKED BY:	PJG
X.XX: $\pm .03$	PROTOTYPE BY:	CHL
X.XXX: $\pm .015$	PROTOTYPE DATE:	10/2/2009
ANGLE: $\pm 1^\circ$	APPROVED FOR PRODUCTION BY:	PJG
THIS PRINT, PROPERTY OF SALCO PRODUCTS INC, CONTAINS PROPRIETARY INFORMATION AND MUST NOT BE COPIED, REPRODUCED, OR USED DETRIMENTALLY TO OUR INTEREST.	PRODUCTION DATE:	10/5/2009
THIRD ANGLE PROJECTION		

B	RJP	10-8-13	ADDED AAR NOTE, FRONT VIEW, DIMS
A	RJP	10-04-13	RELEASED DRAWING TO NETWORK
REV	BY	DATE	DESCRIPTION
 SALCO PRODUCTS, INC.			
PART NAME: QUICK CONNECT 2" THREAD ON			
MATERIAL: SEE BOM			
PROJECT #: WAG0737		SHEET #: 1 OF 1	SCALE: 1:1
DRAWING #: C27576		PART #: K2SUMP17A	