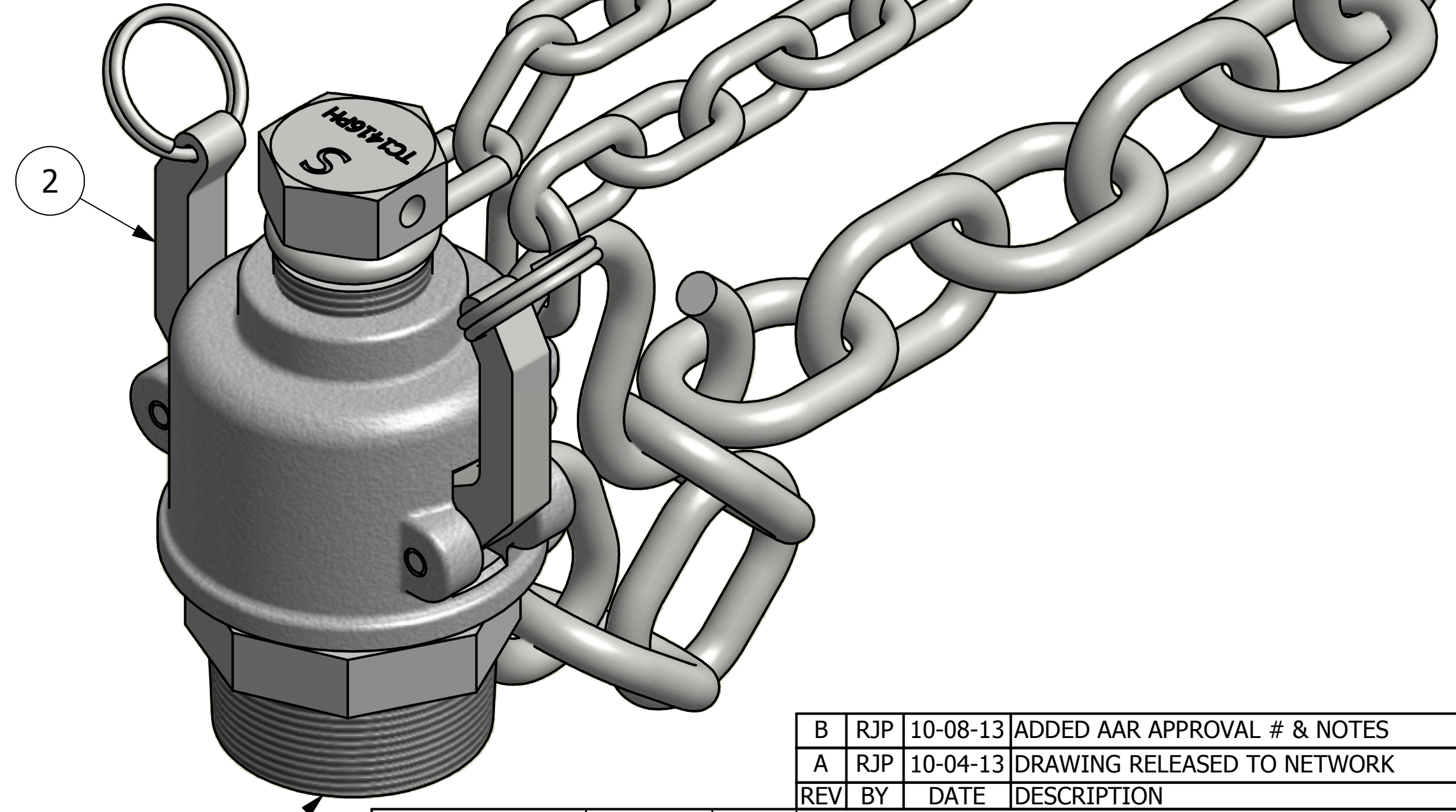
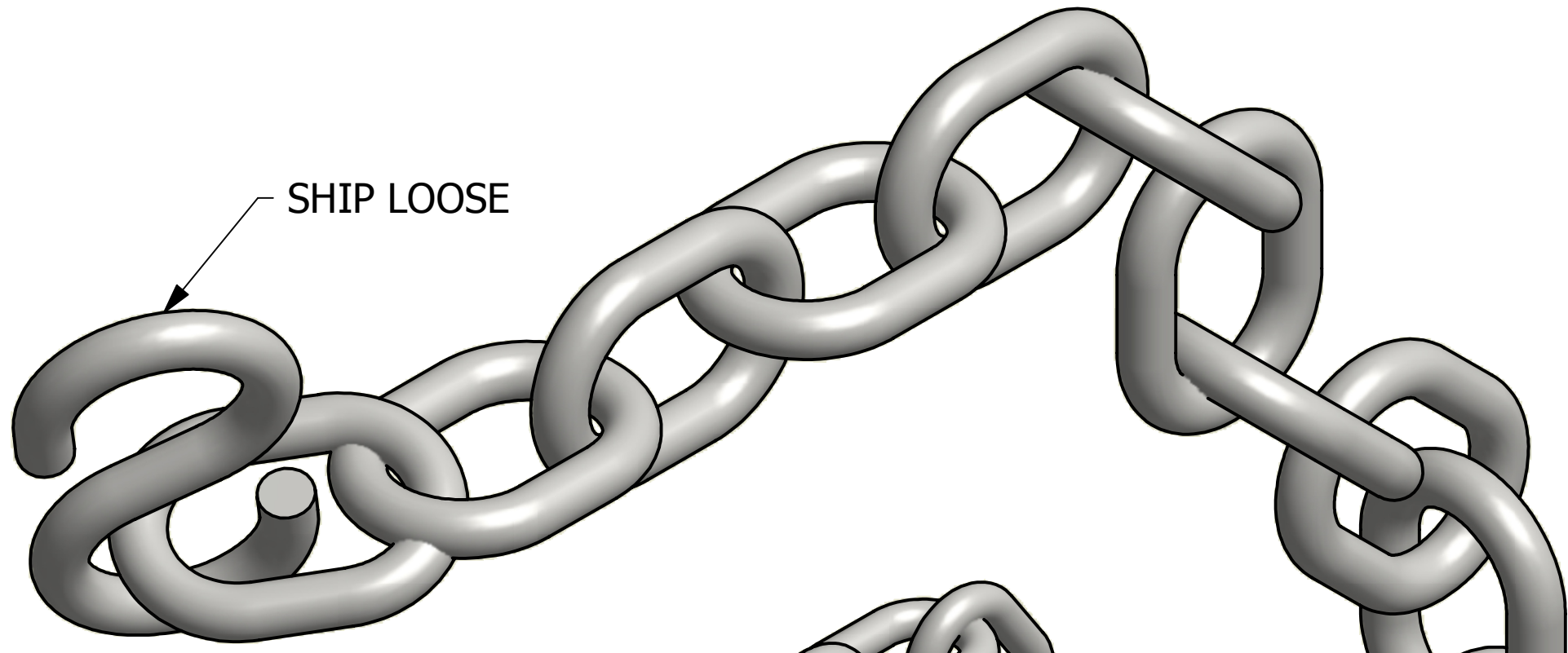
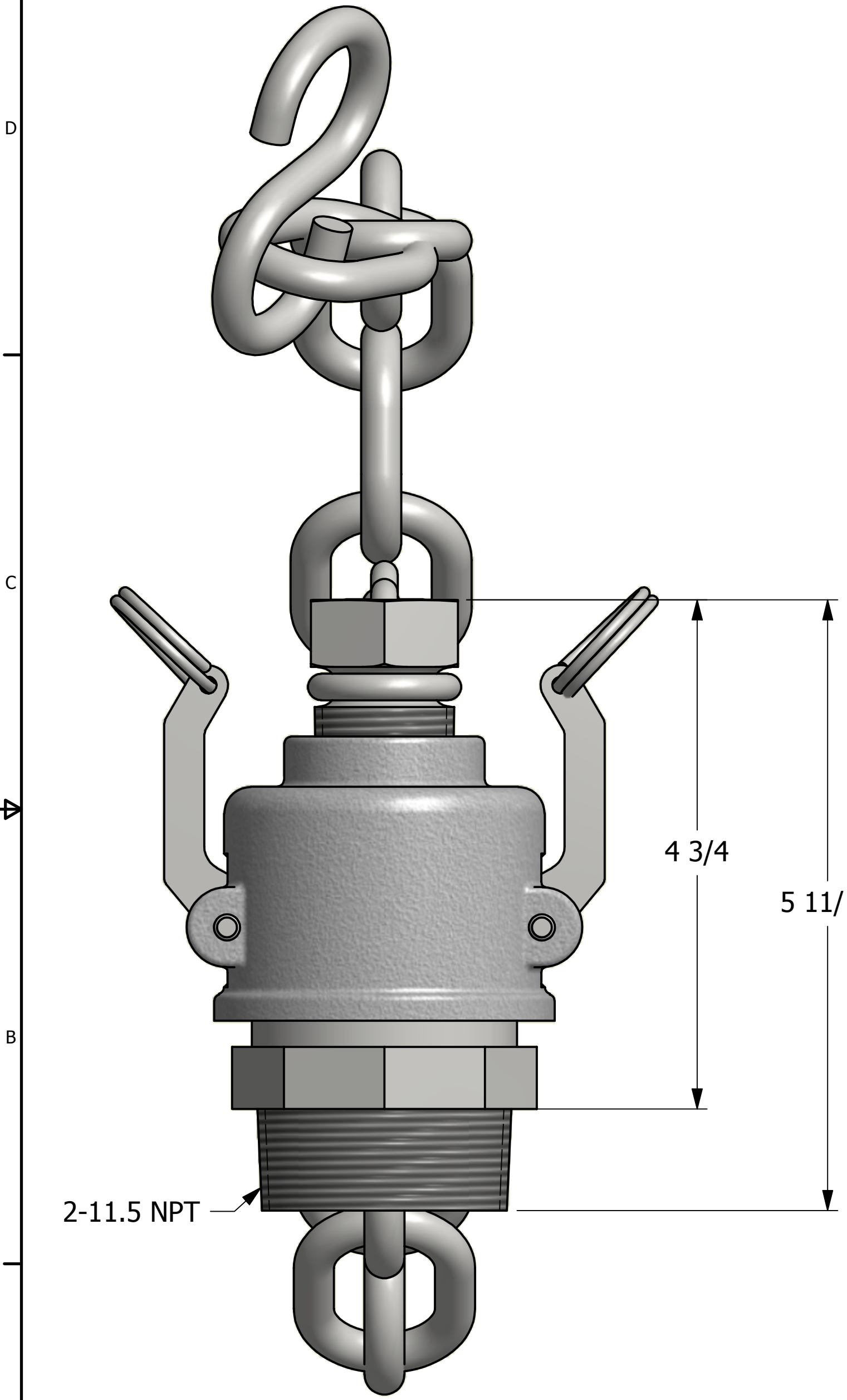


NO.	PART NAME	PART#	REQ'D	MATERIAL
1	QUICK CONNECT ADAPTER 2" THREAD ON	K2SMPA	1	316 SS
2	QUICK CONNECT CAP 2" KAMMED	K2SDC7A	1	316 SS



- NOTES:
- HARDWARE IS SS.
  - GASKET IS BLACK VITON B.
  - AAR APPROVAL # E-139514.

REV	BY	DATE	DESCRIPTION
B	RJP	10-08-13	ADDED AAR APPROVAL # & NOTES
A	RJP	10-04-13	DRAWING RELEASED TO NETWORK

UNLESS OTHERWISE SPECIFIED DIMENSIONAL TOLERANCES	DRAWN BY:	BRG
FRACTIONAL: ±1/16	CHECKED BY:	
X.XX: ±.03	PROTOTYPE BY:	BRG
X.XXX: ±.015	PROTOTYPE DATE:	10/26/2007
ANGLE: ±1°	APPROVED FOR PRODUCTION BY:	
THIS PRINT, PROPERTY OF SALCO PRODUCTS INC, CONTAINS PROPRIETARY INFORMATION AND MUST NOT BE COPIED, REPRODUCED, OR USED DETRIMENTALLY TO OUR INTEREST.	PRODUCTION DATE:	10/26/2007
THIRD ANGLE PROJECTION		

**SALCO PRODUCTS, INC.**

PART NAME:  
**QUICK CONNECT 2" THREAD ON**

MATERIAL: **SEE BOM**

PROJECT #: **WAG0472** SHEET #: **1 OF 1** SCALE: **1:1**

DRAWING #: **C24331** PART #: **K2SUMP7A**