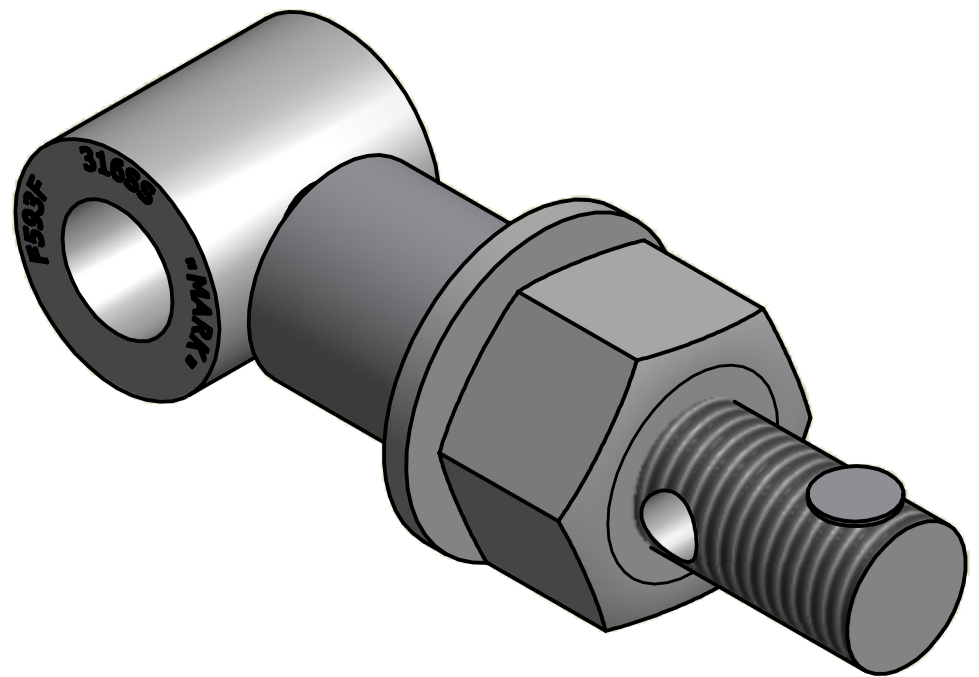
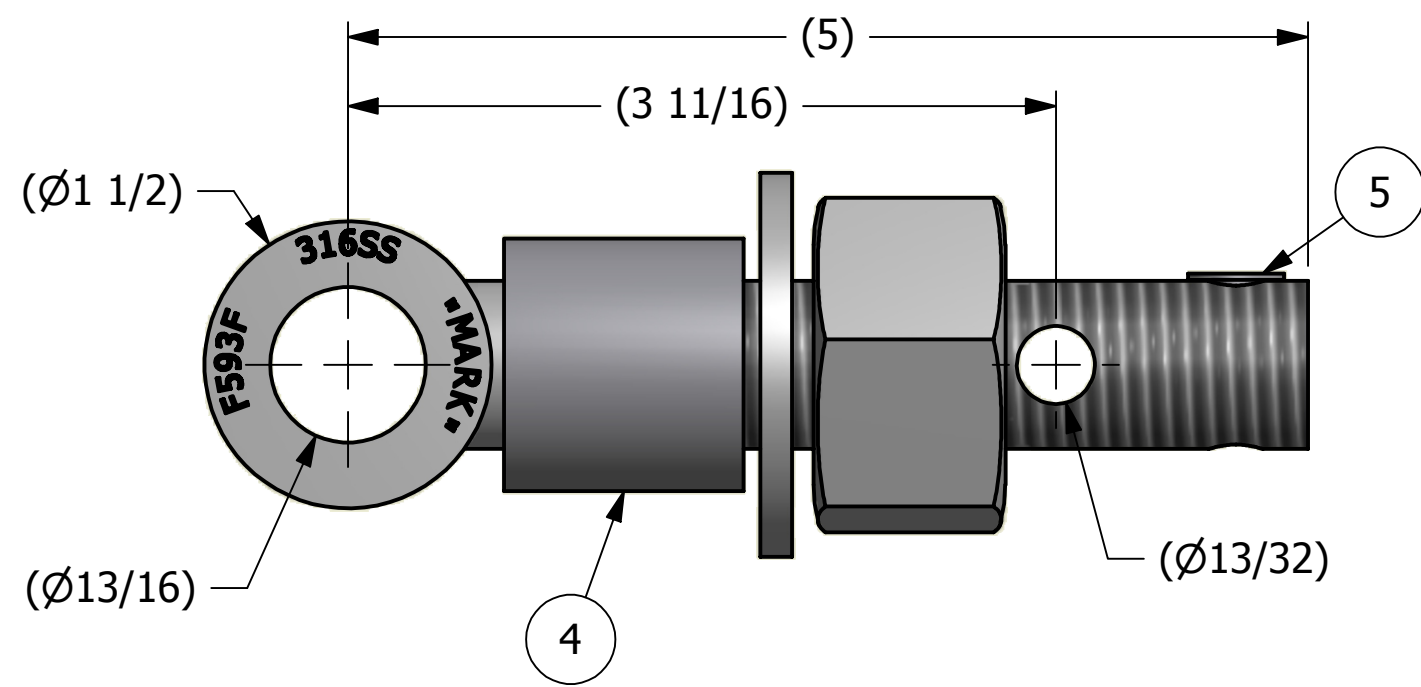
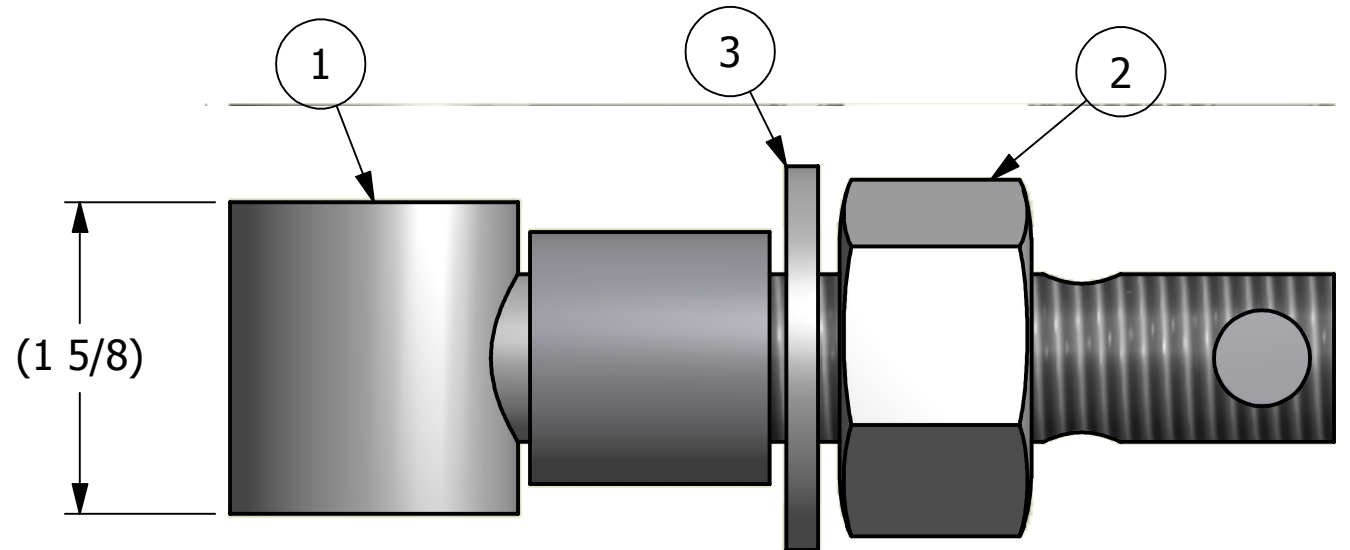


NO.	PART NAME	PART#	REQ'D	MATERIAL
1	EYEBOLT 7/8"X5"	EBR785THS6R	1	316 SS
2	HEAVY HEX NUT 7/8"-9	N78XS6S	1	416 SS
3	FLAT WASHER 7/8" SAE	WASH78S6	1	316 SS
4	SAFETY COLLAR 1 1/4"	COLLAR1S6	1	316 SS
5	HUCK RIVET 1/4"X13/16"	A16204	1	304 SS



ISOMETRIC VIEW

A	CHL	8-10-11	DRAWING ADDED TO NETWORK
REV	BY	DATE	DESCRIPTION

<small>UNLESS OTHERWISE SPECIFIED DIMENSIONAL TOLERANCES</small> FRACTIONAL: ±1/16 X.XX: ±.03 X.XXX: ±.015 ANGULAR: ±1° <small>DEBURR ALL SHARP EDGES. ALL MACHINED SURFACES TO HAVE A 125 RMS FINISH UNLESS NOTED OTHERWISE.</small> THIRD ANGLE PROJECTION	DRAWN BY:	CHL
	CHECKED BY:	AJB
	PROTOTYPE BY:	CHL
	PROTOTYPE DATE:	6/15/2011
	APPROVED FOR PRODUCTION BY:	AJB
	PRODUCTION DATE:	8/10/2011

**SALCO PRODUCTS, INC.**

PART NAME: **EYEBOLT ASSEMBLY 7/8"X5"**

MATERIAL: **SEE BOM**

PROJECT #: **110615**    SHEET #: **1 OF 1**    SCALE: **1:1**

DRAWING #: **B30981**    PART #: **EB785X2THAS6C**

THIS PRINT, PROPERTY OF SALCO PRODUCTS INC., CONTAINS PROPRIETARY INFORMATION AND MUST NOT BE COPIED, REPRODUCED, OR USED DETRIMENTALLY TO OUR INTEREST.