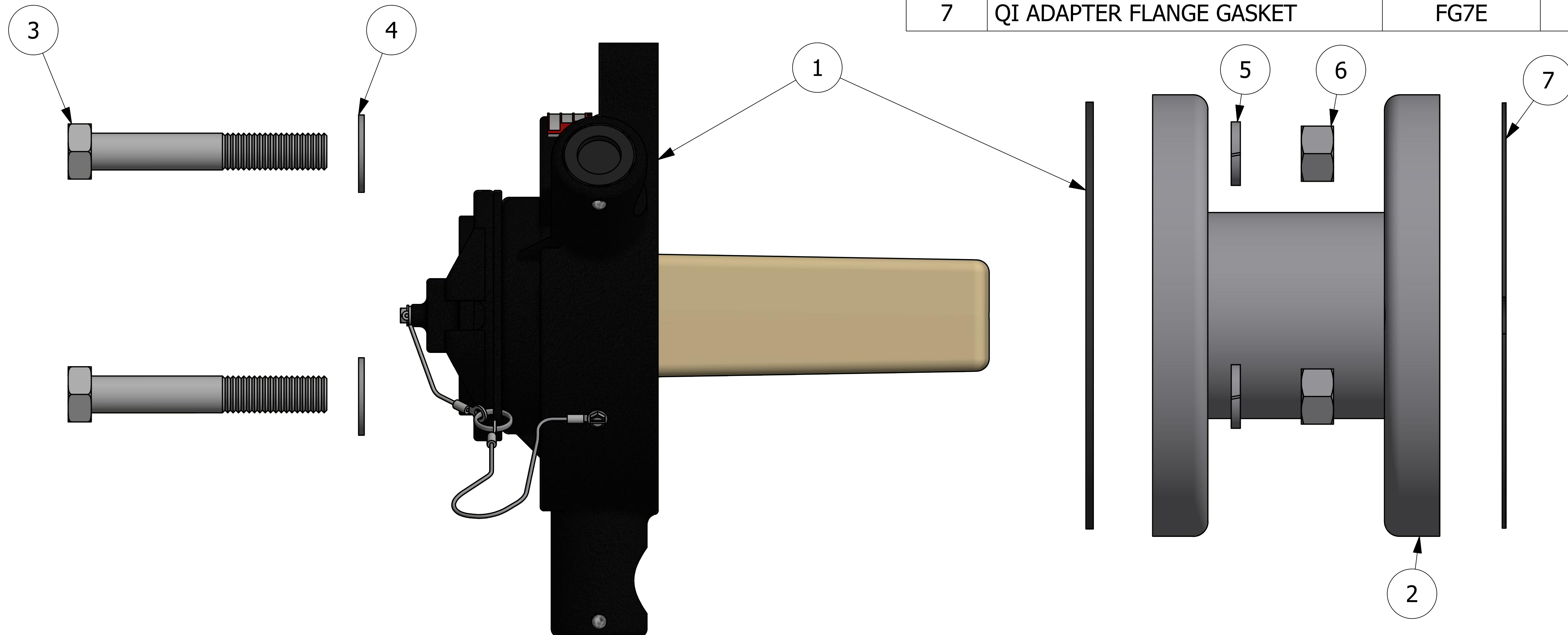


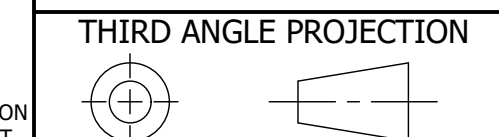
NO.	PART NAME	PART #	REQ'D	MATERIAL
1	QUICK INSPECT SAFETY VENT	QI261R3A	1	SEE DWG
2	QUICK INSPECT ADAPTER FLANGE	QI625BF	1	316 SS
3	HEX BOLT 5/8"-11X4"	SV584FBS	3	18-8 SS
4	FLAT WASHER 5/8" SAE	SV58WS	3	18-8 SS
5	SPLIT LOCK WASHER 5/8"	SV58SLW	3	18-8 SS
6	HEX NUT 5/8"-11	SV58N	3	CS Z/P
7	QI ADAPTER FLANGE GASKET	FG7E	1	BLACK EPDM



NOTES:

1. MOUNTING FLANGE TO AAR SPECIFICATIONS E21B & E21E
2. APPROXIMATE TOTAL HEIGHT: 9 3/8"
3. SURGE PROTECTOR MATERIAL: RYTON
4. CUSTOMER RESPONSIBILITY FOR COMPATIBILITY OF COMMODITY
5. RUPTURE DISC PRESSURE INDICATED BY CUSTOMER
6. AAR APPROVAL NO. SRD-063000

UNLESS OTHERWISE SPECIFIED
DIMENSIONAL TOLERANCES
FRACTIONAL: ±1/16
X.XX: ±.03
X.XXX: ±.015
ANGULAR: ±1°
DEBURR ALL SHARP EDGES.
ALL MACHINED SURFACES TO
HAVE A 125 RMS FINISH
UNLESS NOTED OTHERWISE.



DRAWN BY: VD
CHECKED BY: CHL
PROTOTYPE BY: VD
PROTOTYPE DATE: 11/9/2011
APPROVED FOR PRODUCTION BY:
PRODUCTION DATE:

A	VD	12-20-11	ADDED PART TO NETWORK.
REV	BY	DATE	DESCRIPTION

SALCO PRODUCTS, INC.

QUICK INSPECT SAFETY VENT W/ FLANGE

MATERIAL: **SEE BOM**

PROJECT #: **111104** SHEET #: **1 OF 1** SCALE: **1:1**

DRAWING #: **D31945** PART #: **QIF625RA**