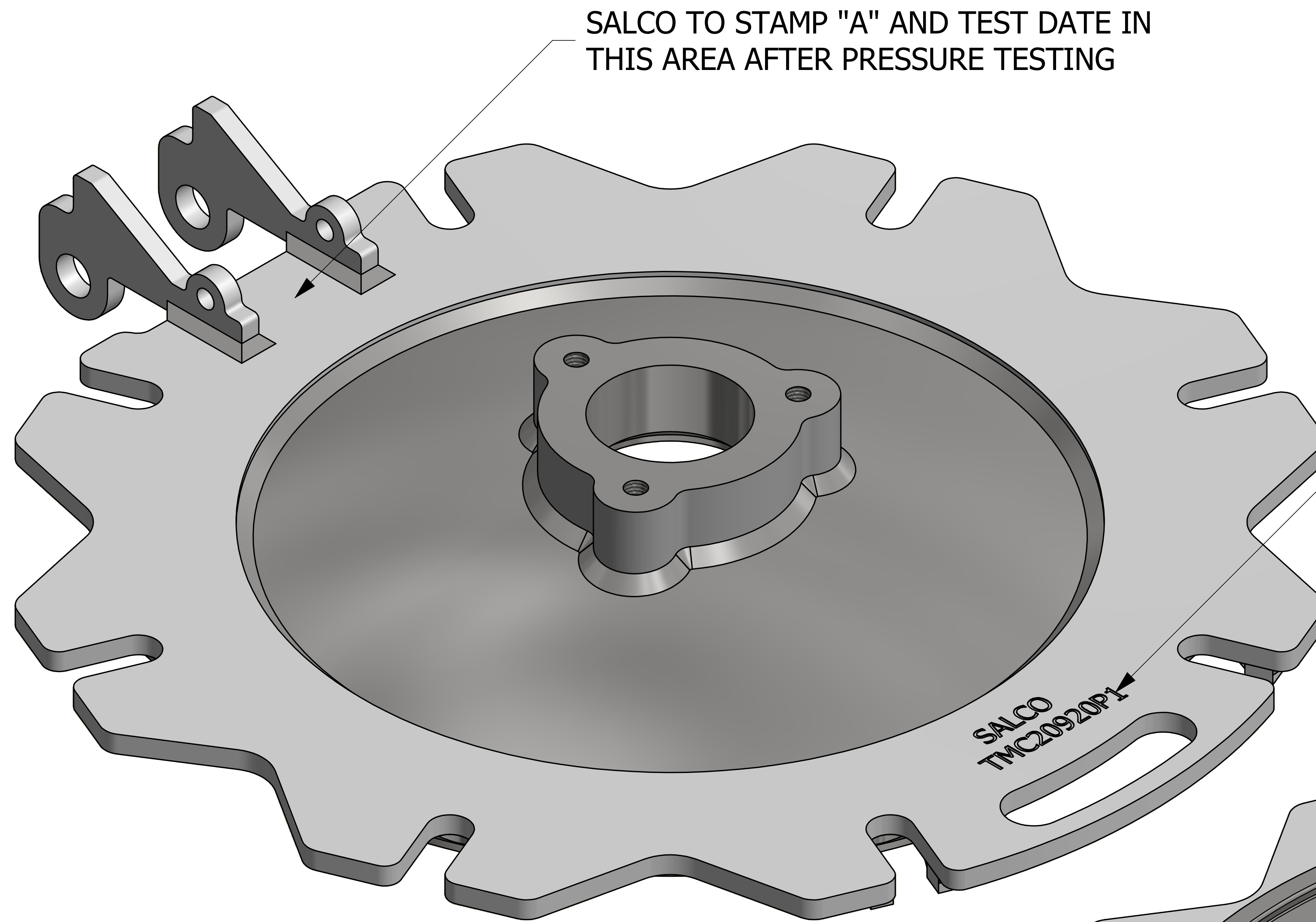
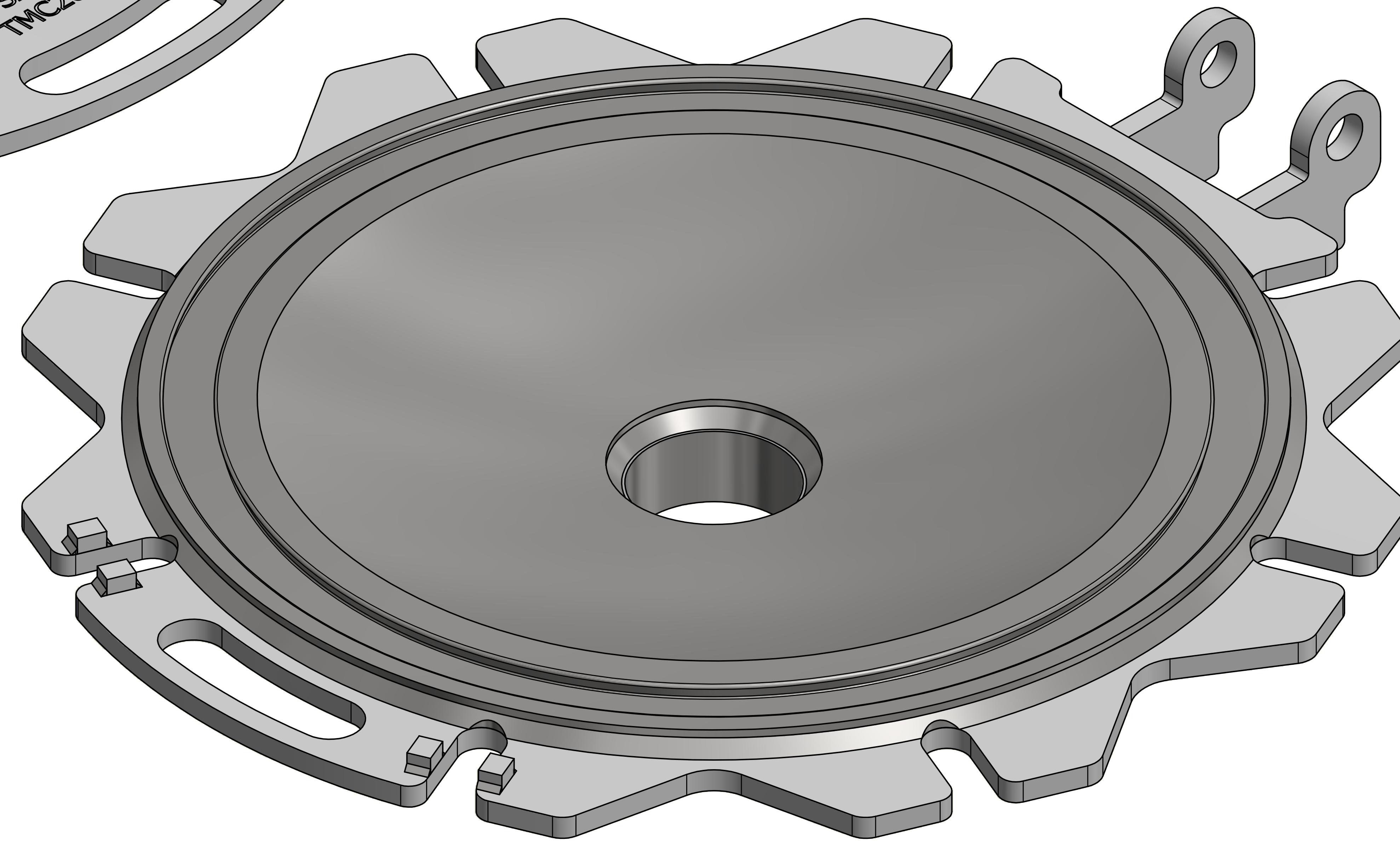


NO	PART NAME	PART#	REQ'D	MATERIAL
1	MANWAY COVER 20" 8-BOLT	TMC20920	1	CS/316L SS



STAMP "P1" AFTER PART NUMBER "TMC20920" PRIOR TO PAINTING



**NOTES:**

1. STAMP "P1" AFTER "TMC20920" PART NUMBER PRIOR TO PAINTING.
2. CARBON STEEL MANWAY RING, HINGES, AND SAFETY STOPS TO BE FULLY PAINTED WITH MACROPOXY® 646 FAST CURE EPOXY WHITE.
3. DRY FILM THICKNESS TO BE 5 TO 6 MILS THICK.
4. MASK ALL REMAINING SURFACE AREA TO PREVENT OVER SPRAY.
5. DO NOT PAINT ANY OTHER PARTS OF THE COVER.
6. PART NUMBER AND HEAT/LOT# TO BE LEGIBLE AFTER PAINTING.
7. SALCO TO STAMP "A" AND TEST DATE ON HINGE AFTER PRESSURE TESTING IF APPLICABLE. SEE LOCATION ABOVE.

E	RJP	11-17-17	UPDATED TMC20920 TO INCLUDE "SALCO" IN ENGRAVING; ADDED PAINT TO HINGES & SAFETY STOPS
D	JG	9-30-15	UPDATED VIEWS TO REFLECT CHANGE IN TMC20920
C	CHL	7-16-13	MOVED STAMP NOTE FROM DOME TO HINGE AREA
B	JJK	3-8-12	CHANGED NOTE 2 AND ADDED NOTE 3.
A	BG	2/27/12	NEW PART ADDED TO THE NETWORK
REV	BY	DATE	DESCRIPTION

UNLESS OTHERWISE SPECIFIED DIMENSIONAL TOLERANCES FRACTIONAL: ±1/16 X.XX: ±.03 X.XXX: ±.015 ANGULAR: ±1° DEBURR ALL SHARP EDGES. ALL MACHINED SURFACES TO HAVE A 125 RMS FINISH UNLESS NOTED OTHERWISE.	DRAWN BY: CHL
THIRD ANGLE PROJECTION	CHECKED BY: VD
	PROTOTYPE BY: CHL
	PROTOTYPE DATE: 12/13/2011
	APPROVED FOR PRODUCTION BY: VD
	PRODUCTION DATE: 2/27/2012

<b>SALCO PRODUCTS, INC.</b>			
PART NAME: <b>MANWAY COVER 20" 8-BOLT</b>			
MATERIAL: <b>SEE BOM/NOTES</b>			
PROJECT #:	111212	SHEET #:	1 OF 1
DRAWING #:	E32161	PART #:	TMC20920P1
		SCALE:	1:1