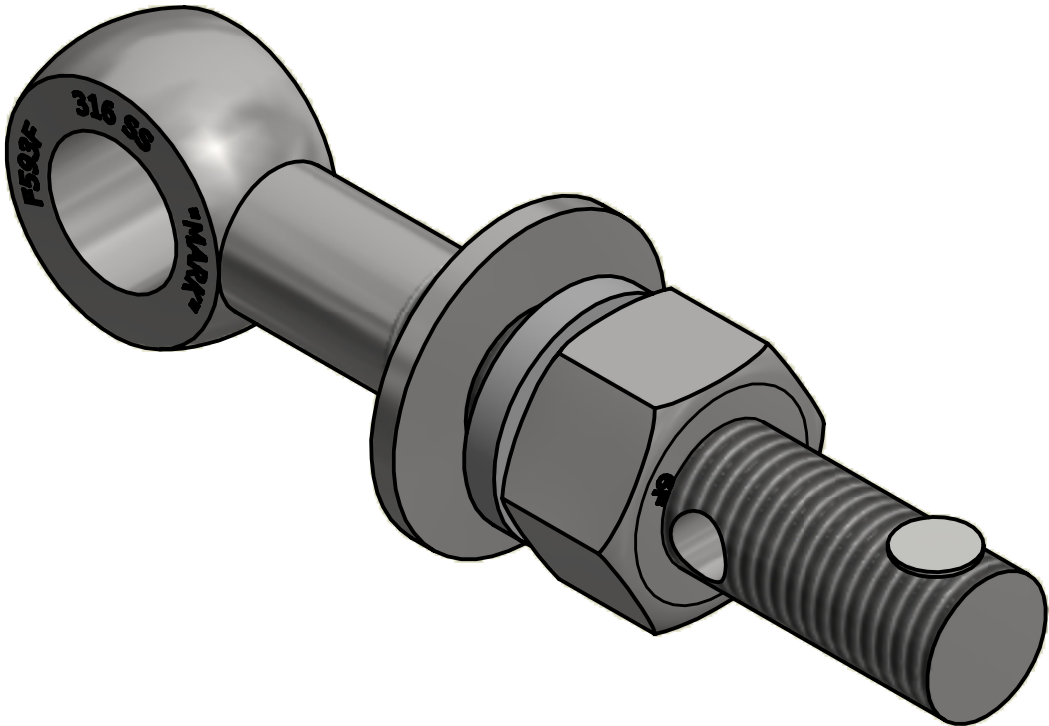
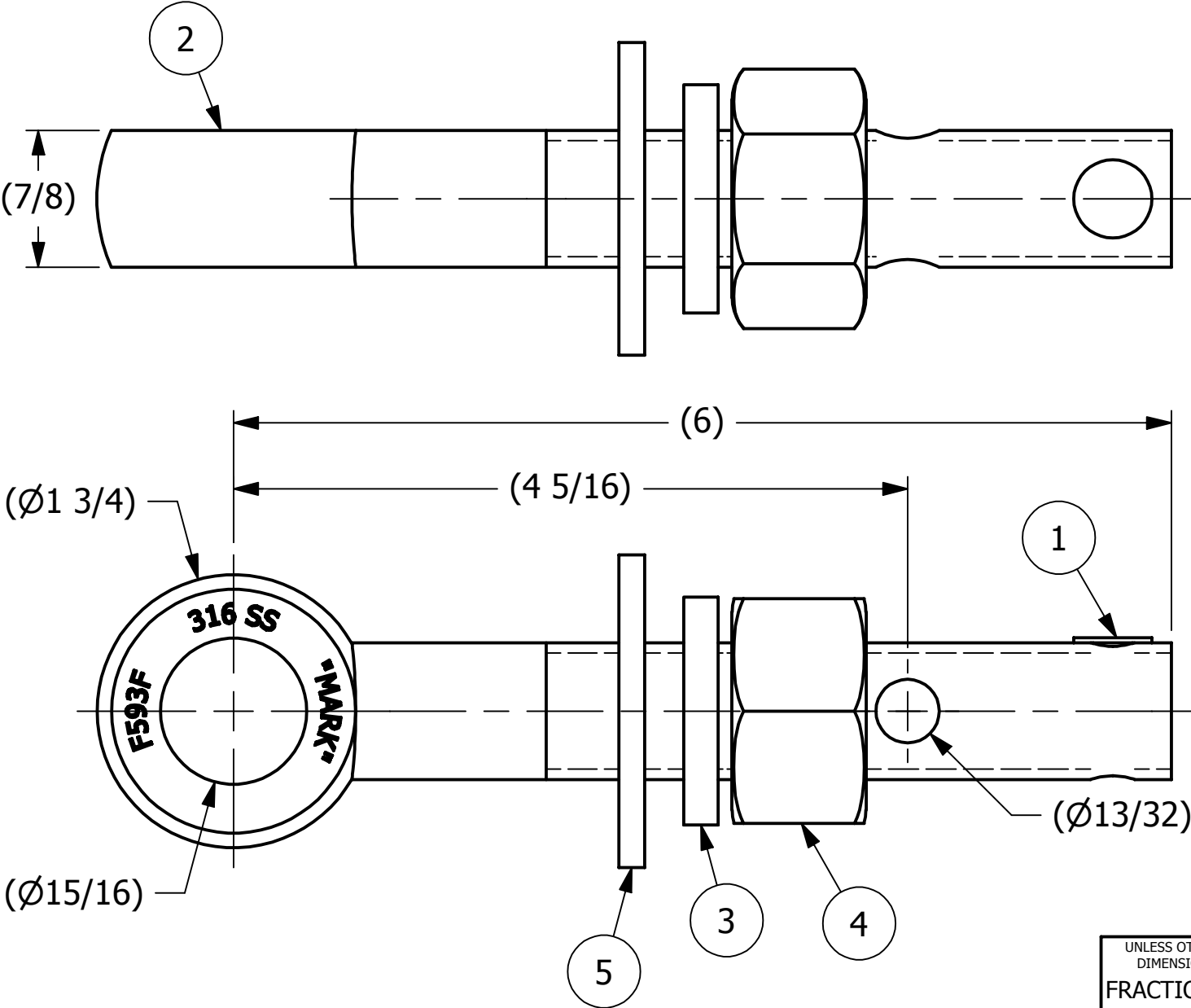

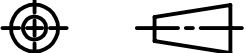


2		1		
NO	PART NAME	PART#	REQ'D	MATERIAL
1	HUCK RIVET 1/4"X13/16"	A16204	1	304 SS
2	EYEBOLT 7/8"X6"	EBR786HS6R	1	316 SS
3	SPLIT LOCK WASHER 7/8"	LW71079	1	316 SS
4	HEAVY HEX NUT 7/8"-9	N78XS6	1	416 SS
5	FLAT WASHER 7/8" SAE	WASH78S6	1	316 SS



ISOMETRIC VIEW

UNLESS OTHERWISE SPECIFIED DIMENSIONAL TOLERANCES		DRAWN BY:	JJK	<div> SALCO PRODUCTS, INC.</div>					
FRACTIONAL:	±1/16	CHECKED BY:	CHL				PART NAME: EYEBOLT ASSEMBLY 7/8"X6"		
X.XX:	±.03	PROTOTYPE BY:	JJK						
X.XXX:	±.015	PROTOTYPE DATE:	2/27/2012	MATERIAL: SEE BOM					
ANGULAR:	±1°	APPROVED FOR PRODUCTION BY:	EJF	PROJECT #:	120223	SHEET #:	1 OF 1	SCALE:	1:1
DEBURR ALL SHARP EDGES. ALL MACHINED SURFACES TO HAVE A 125 RMS FINISH UNLESS NOTED OTHERWISE.				DRAWING #:		PART #:			
THIRD ANGLE PROJECTION				B32623		EB786XHA2S6			
		PRODUCTION DATE:	1/10/2017						

THIS PRINT, PROPERTY OF SALCO PRODUCTS INC., CONTAINS PROPRIETARY INFORMATION
AND MUST NOT BE COPIED, REPRODUCED, OR USED DETRIMENTALLY TO OUR INTEREST.