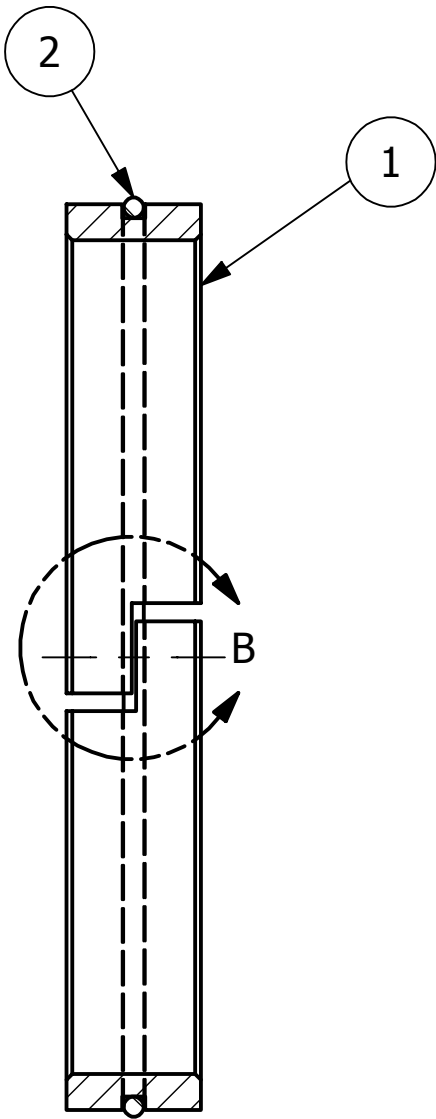
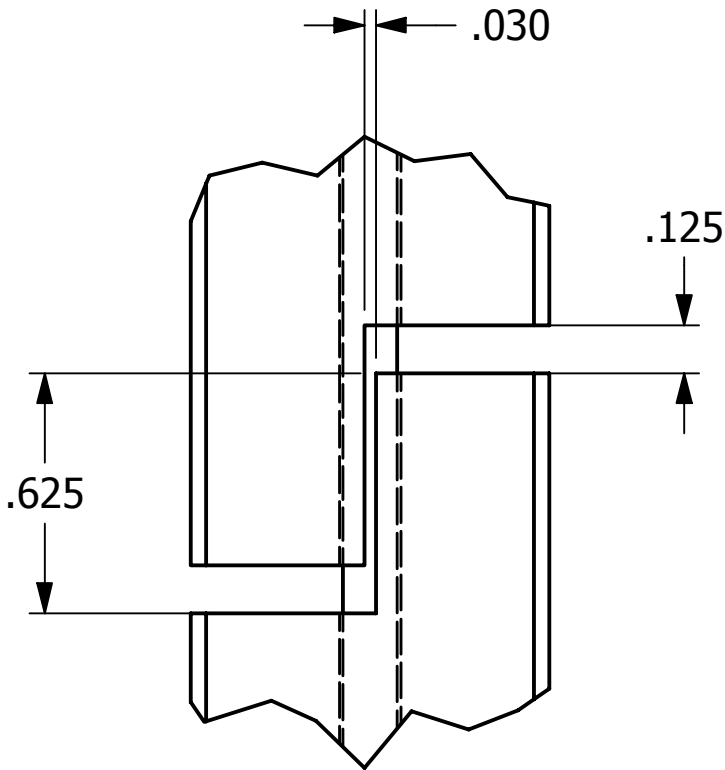


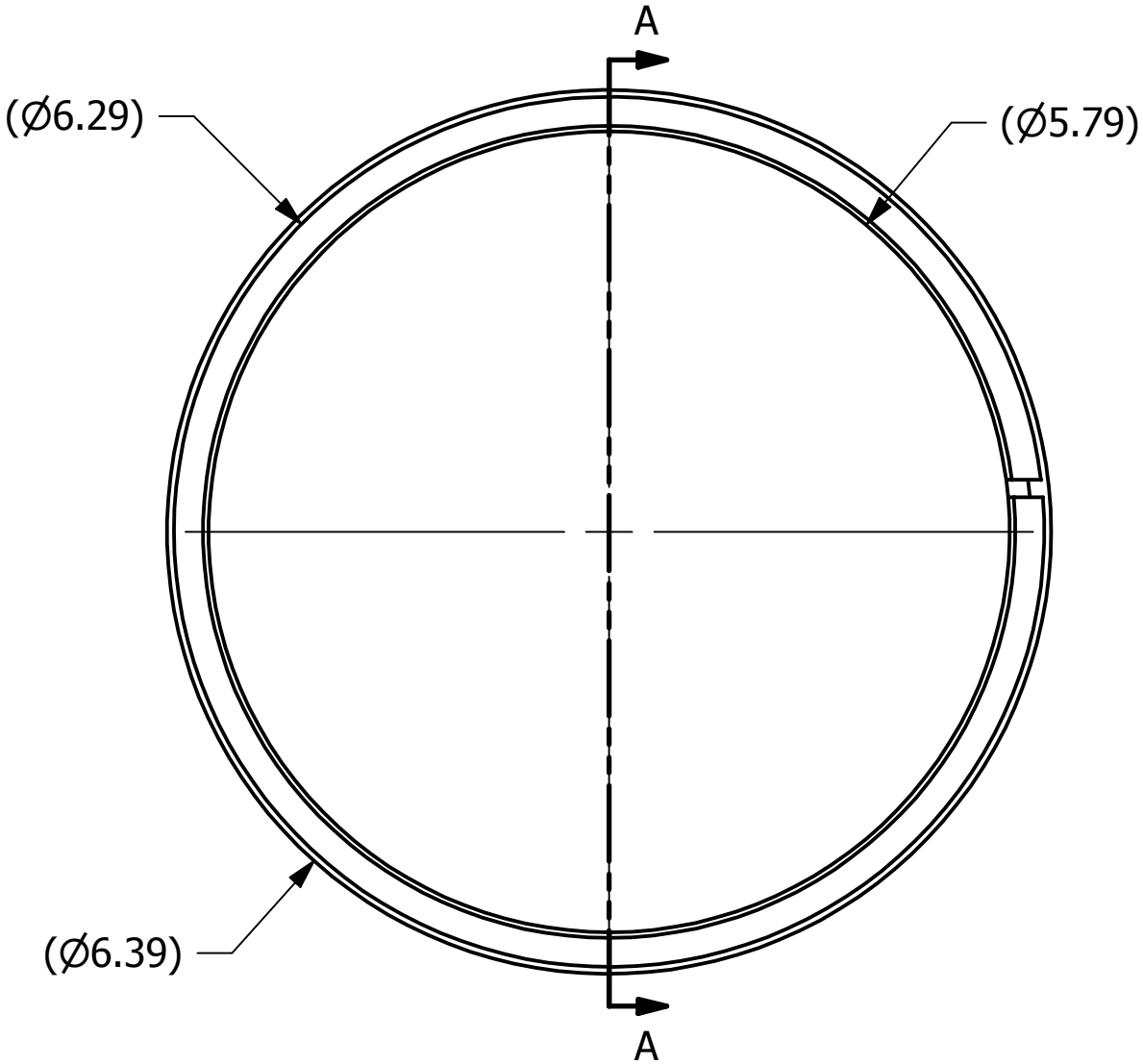
2		1		
NO.	PART NAME	PART #	REQ'D	MATERIAL
1	END ADAPTER BEARING	MTB103	1	DELRIN
2	O-RING	MTB103OR	1	



SECTION A-A



DETAIL B
SCALE 2:1



NOTE:
O-RING INSTALLED AFTER Z-CUT MADE TO BEARING

A	WEB	1-09-13	UPDATED TO CURRENT DRAFTING STANDARDS, ADDED NOTE AND Z-CUT DIMS
REV	BY	DATE	DESCRIPTION

UNLESS OTHERWISE SPECIFIED DIMENSIONAL TOLERANCES FRACTIONAL: $\pm 1/16$ X.XX: $\pm .03$ X.XXX: $\pm .015$ ANGULAR: $\pm 1^\circ$ DEBURR ALL SHARP EDGES. ALL MACHINED SURFACES TO HAVE A 125 RMS FINISH UNLESS NOTED OTHERWISE. THIRD ANGLE PROJECTION	DRAWN BY:	BRW
	CHECKED BY:	CHL
	PROTOTYPE BY:	BRW
	PROTOTYPE DATE:	7/15/1994
	APPROVED FOR PRODUCTION BY:	BRW
	PRODUCTION DATE:	7/15/1994

PART NAME: END ADAPTER RING ASSEMBLY		
MATERIAL: SEE BOM		
PROJECT #:	SHEET #: 1 OF 1	SCALE: 3:4
DRAWING #: B5751	PART #: MTB103A	