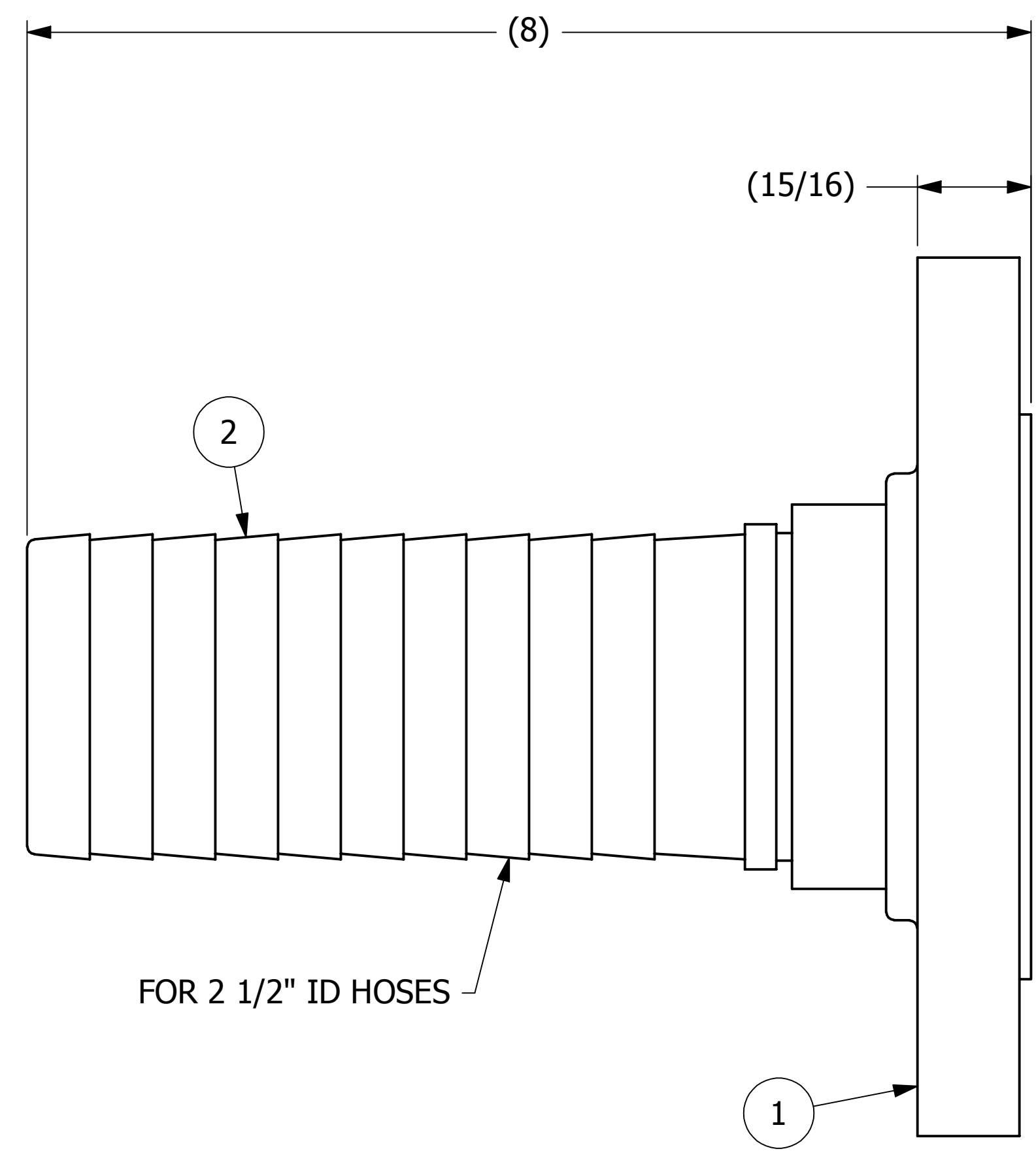
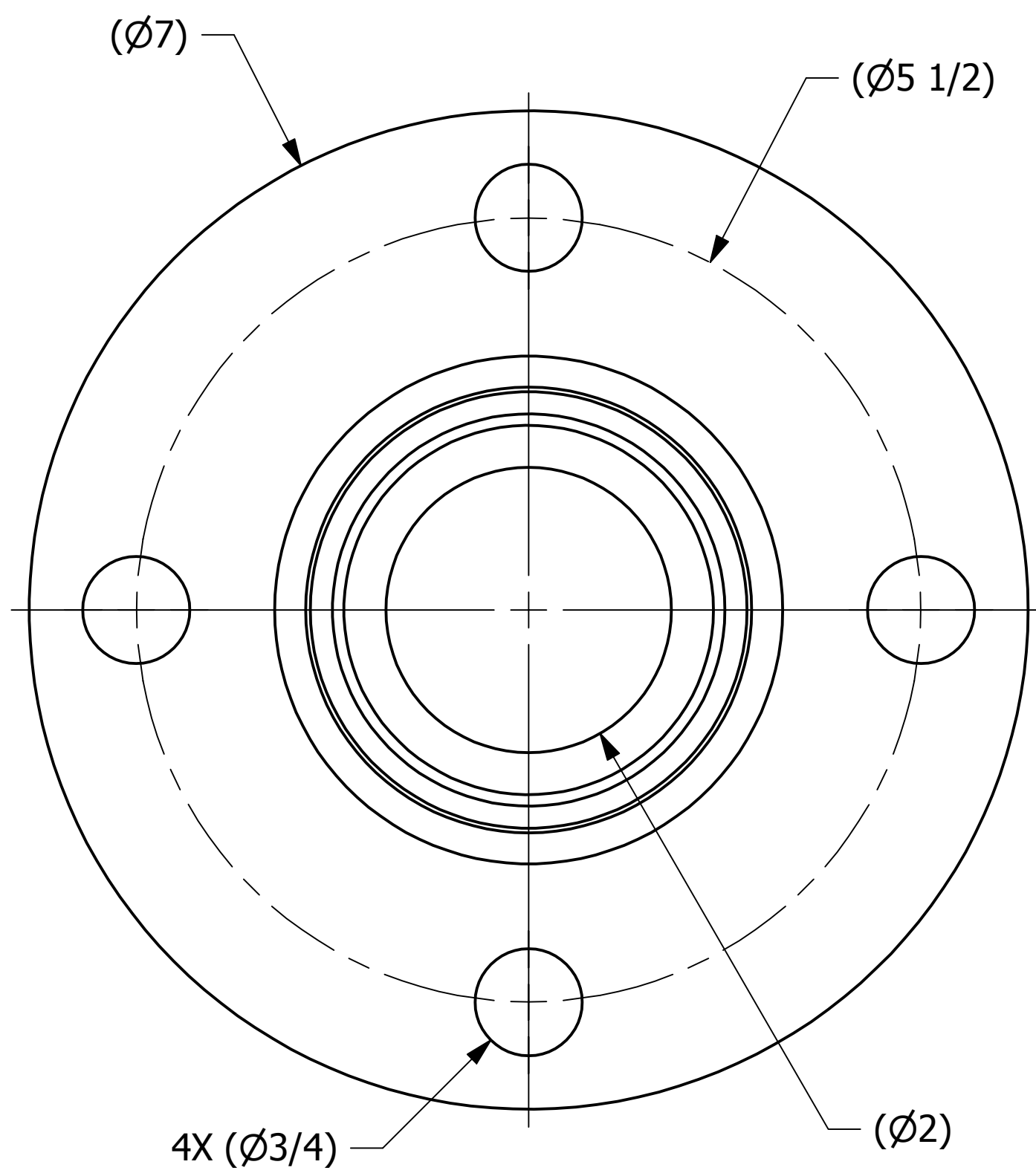


NO.	PART NAME	PART#	REQ'D	MATERIAL
1	INSERT FLANGE 2 1/2" 150 LB	HS25FLS4	1	304 SS
2	HOSE BARB INSERT 2 1/2"	HS25HBP	1	SALCO PE



FOR 2 1/2" ID HOSES

REV	BY	DATE	DESCRIPTION
A	CHL	4-18-11	ADDED DRAWING TO NETWORK

UNLESS OTHERWISE SPECIFIED
DIMENSIONAL TOLERANCES
FRACTIONAL: ±1/16
X.XX: ±.03
X.XXX: ±.015
ANGLE: ±1°
DEBURR ALL SHARP EDGES.
ALL MACHINED SURFACES TO
HAVE A 125 RMS FINISH UNLESS
NOTED OTHERWISE.

THIRD ANGLE PROJECTION

DRAWN BY:	CHL
CHECKED BY:	PJG
PROTOTYPE BY:	CHL
PROTOTYPE DATE:	3/24/2011
APPROVED FOR PRODUCTION BY:	
PRODUCTION DATE:	

SALCO PRODUCTS, INC.
Hazarsolve® Division

PART NAME: **FLANGED HOSE BARB 2 1/2"**

MATERIAL: **SEE BOM**

PROJECT #: **031212AQ** SHEET #: **1 OF 1** SCALE: **1:1**

DRAWING #: **C30478** PART #: **HS25FTBSS**

THIS PRINT, PROPERTY OF SALCO PRODUCTS INC, CONTAINS PROPRIETARY INFORMATION AND MUST NOT BE COPIED, REPRODUCED, OR USED DETRIMENTALLY TO OUR INTEREST.