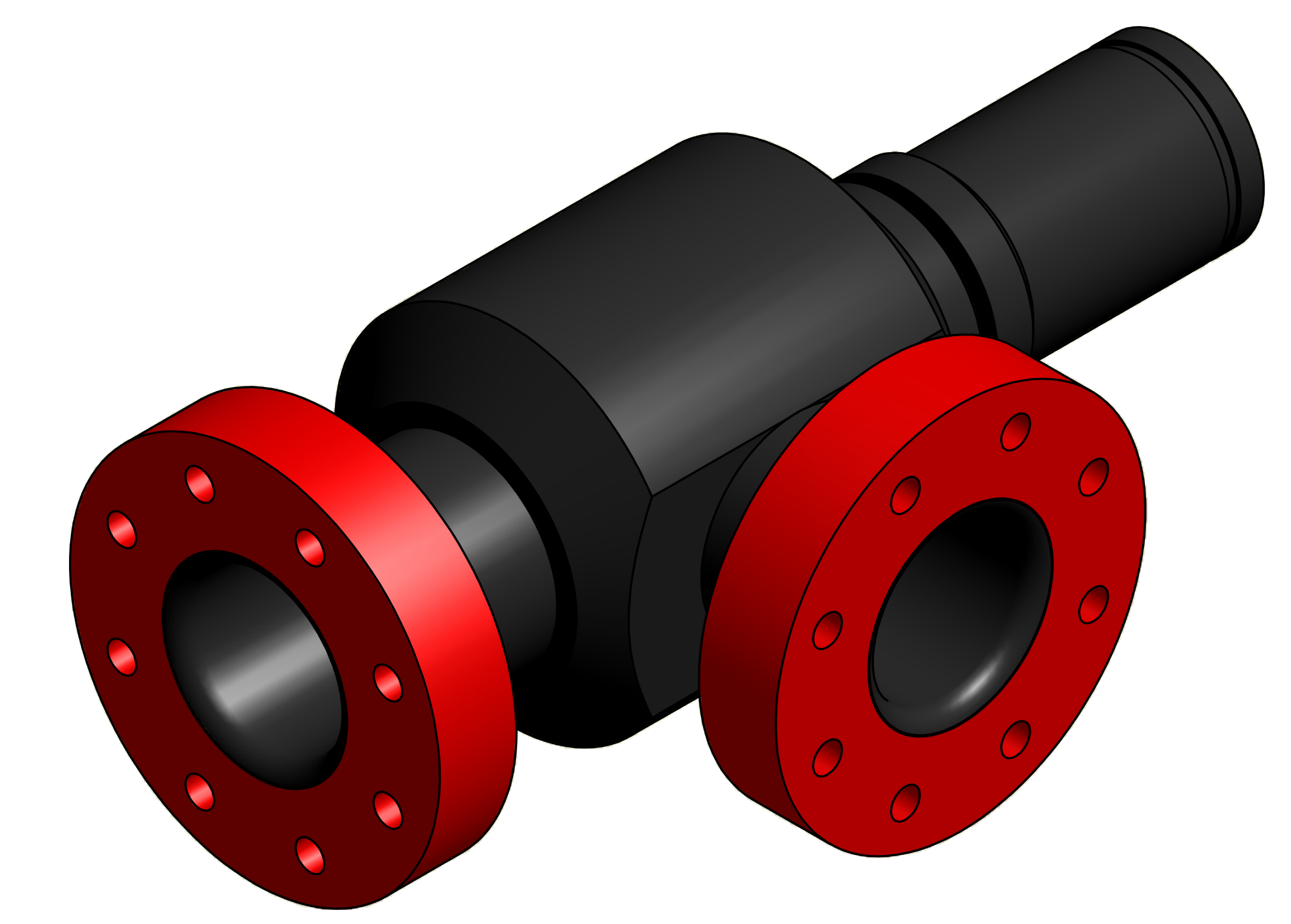
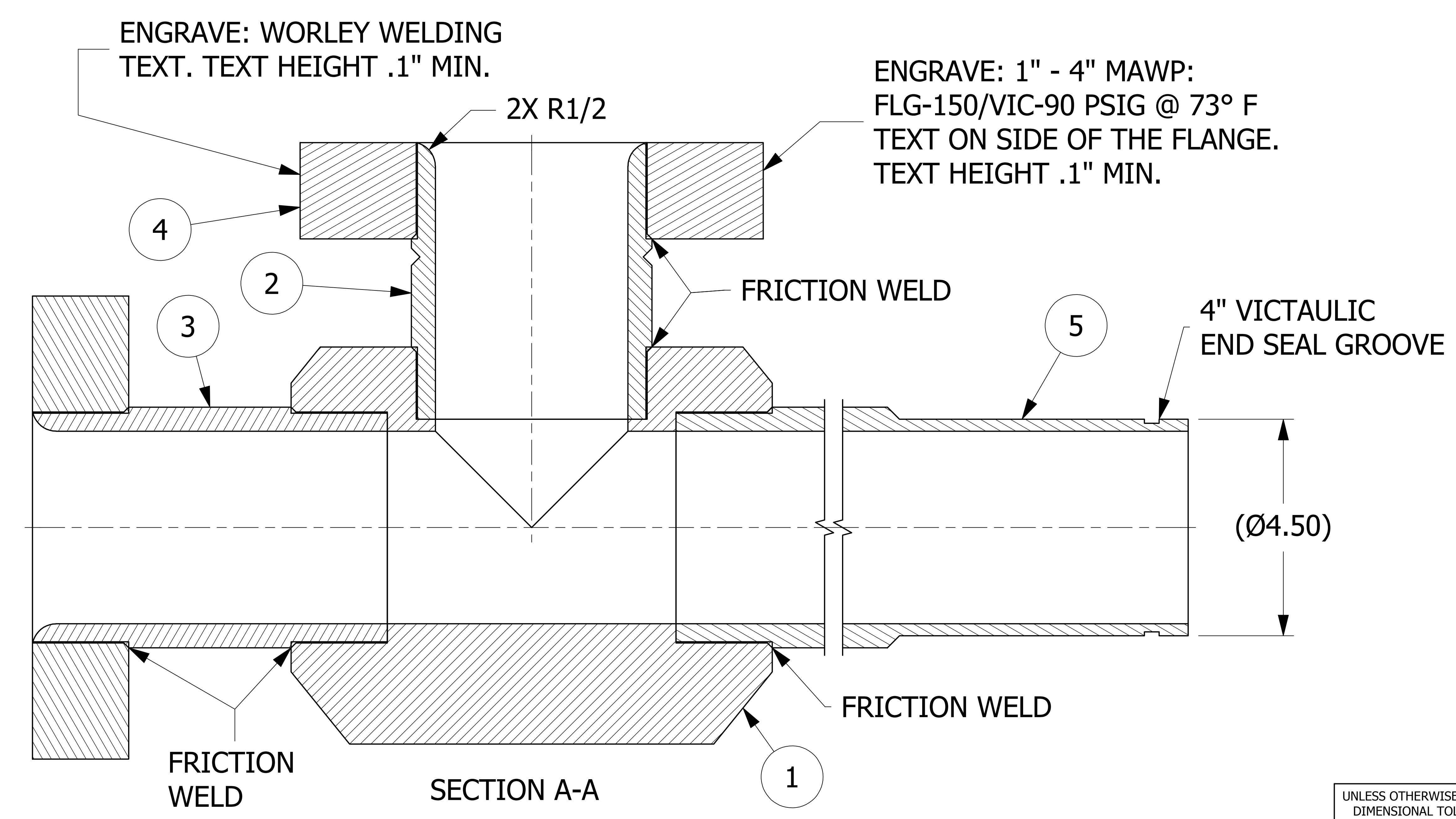
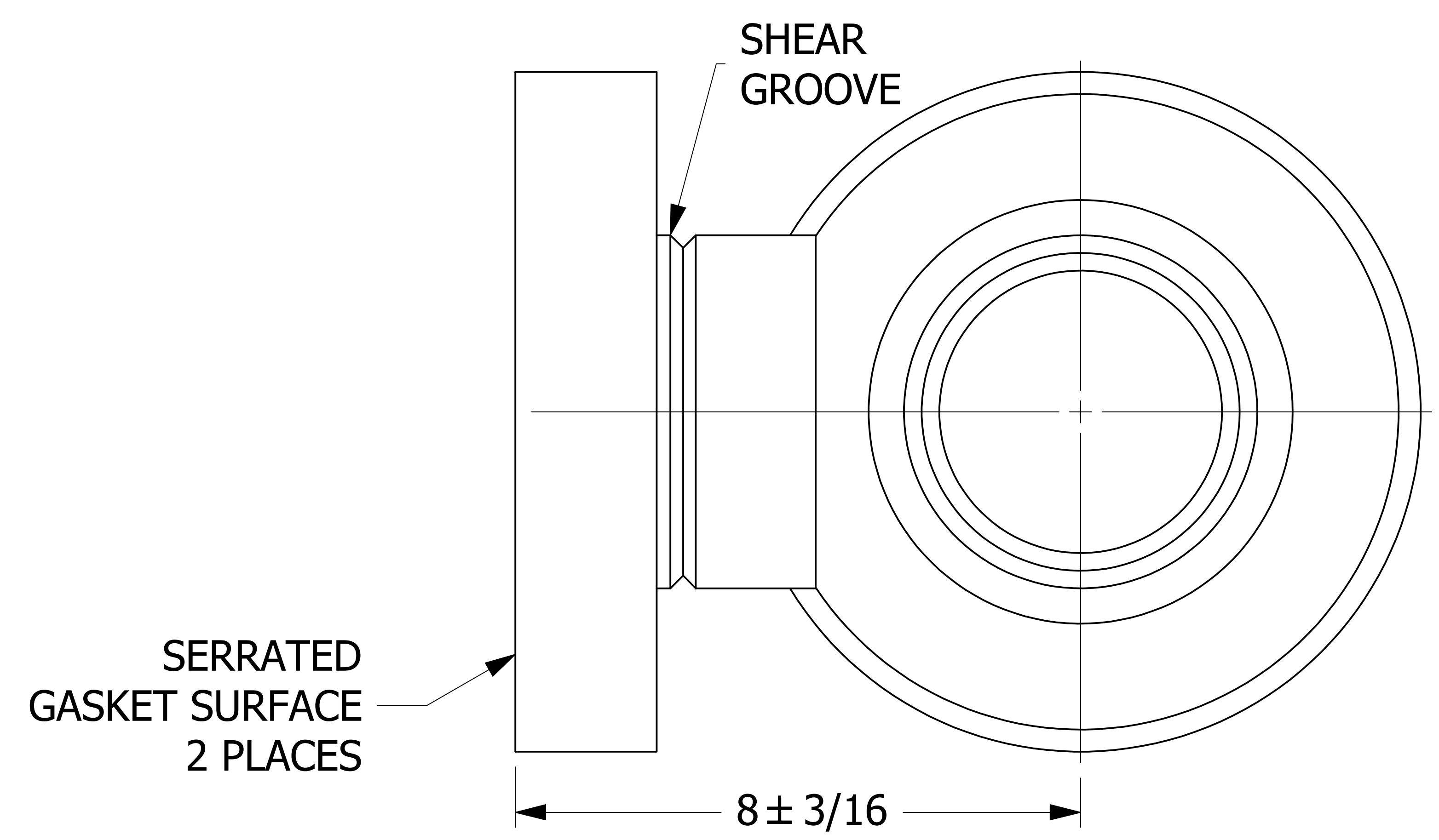
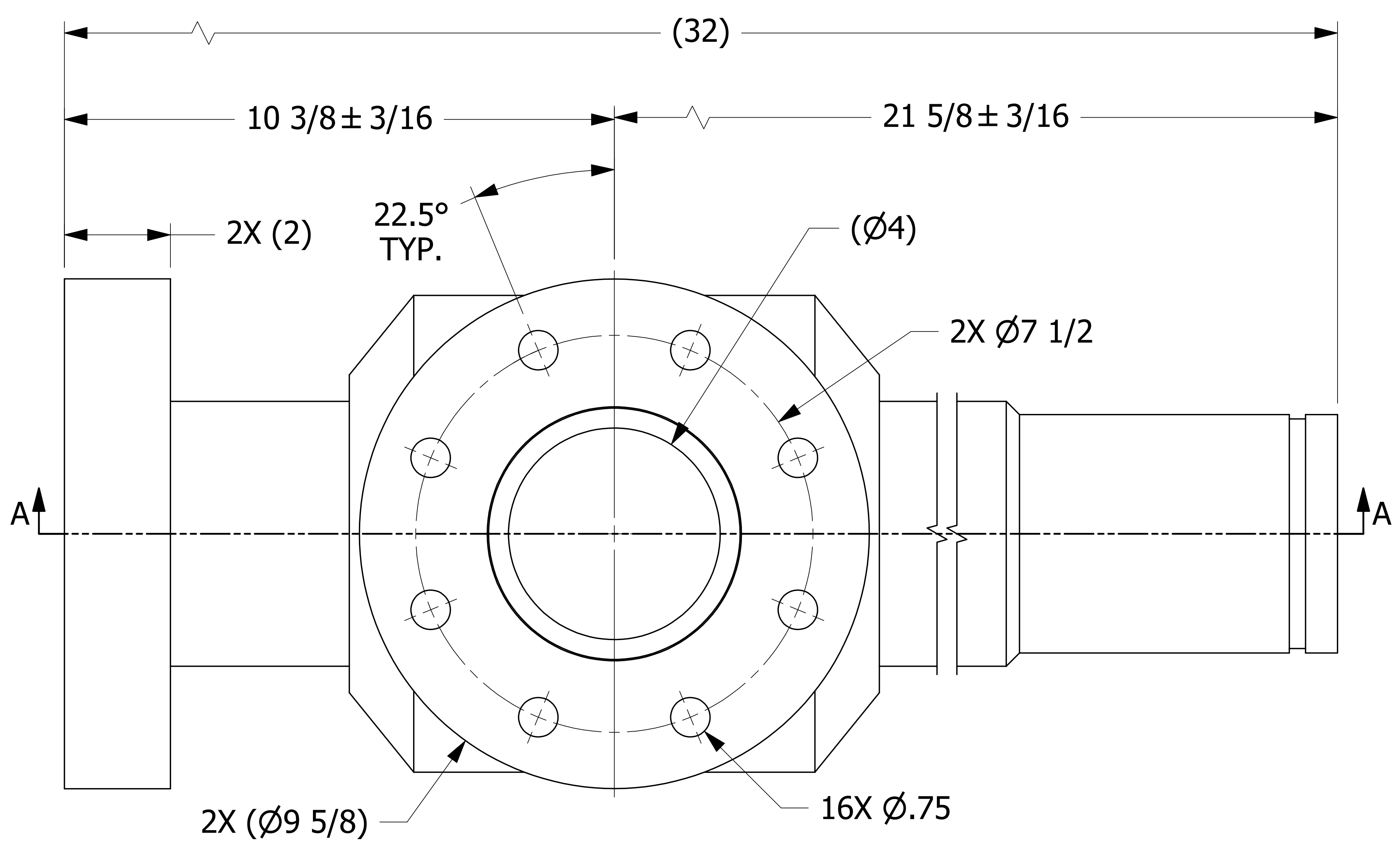


NO.	PART NAME	PART #	REQ'D	MATERIAL
1	PIPE TEE BODY 4"	HS4PTB2	1	SALCO PE
2	TUBE 5"X4"	B31153	1	SALCO PE
3	TUBE 5"X4"	B27607	1	SALCO PE
4	FLANGE 4"	HS4FLGS	2	SALCO PE
5	TUBE 5" X 4"	B30783	1	SALCO PE



ISOMETRIC VIEW
SCALE 1:2

- NOTES:
1. BORE Ø4.750 HOLE IN FLANGES BEFORE FRICTION WELDING.
 2. TEST PER QAP4C-1
 3. SEE QAP5A-1 FOR MARKING PROCEDURES.

D	KHK	4-1-13	UPDATED TITLEBLOCK, SCALE WAS 1:1, NOTE, VIEWS, BORE HOLE 4.750 WAS 4.765
C	VD	07-29-11	REPLACED A27367 W/ B31153 IN BOM
B	GDS	7-28-11	ADDED MARKING PRESSURE NOTE
A	GDS	7-20-11	NEW DRAWING ADDED TO SYSTEM
REV	BY	DATE	DESCRIPTION

UNLESS OTHERWISE SPECIFIED DIMENSIONAL TOLERANCES FRACTIONAL: ±1/16 X.XX: ±.03 X.XXX: ±.015 ANGULAR: ±1° DEBURR ALL SHARP EDGES. ALL MACHINED SURFACES TO HAVE A 125 RMS FINISH UNLESS NOTED OTHERWISE.	DRAWN BY: WRB
THIRD ANGLE PROJECTION	CHECKED BY: VD
	PROTOTYPE BY: WRB
	PROTOTYPE DATE: 5/12/2011
	APPROVED FOR PRODUCTION BY: VD
	PRODUCTION DATE: 7/20/2011

SALCO PRODUCTS, INC.

PART NAME: **PIPE TEE 4"**

MATERIAL: **SALCO PE**

PROJECT #: **110509** SHEET #: **1 OF 1** SCALE: **4:5**

DRAWING #: **E30784** PART #: **HS4PT8**