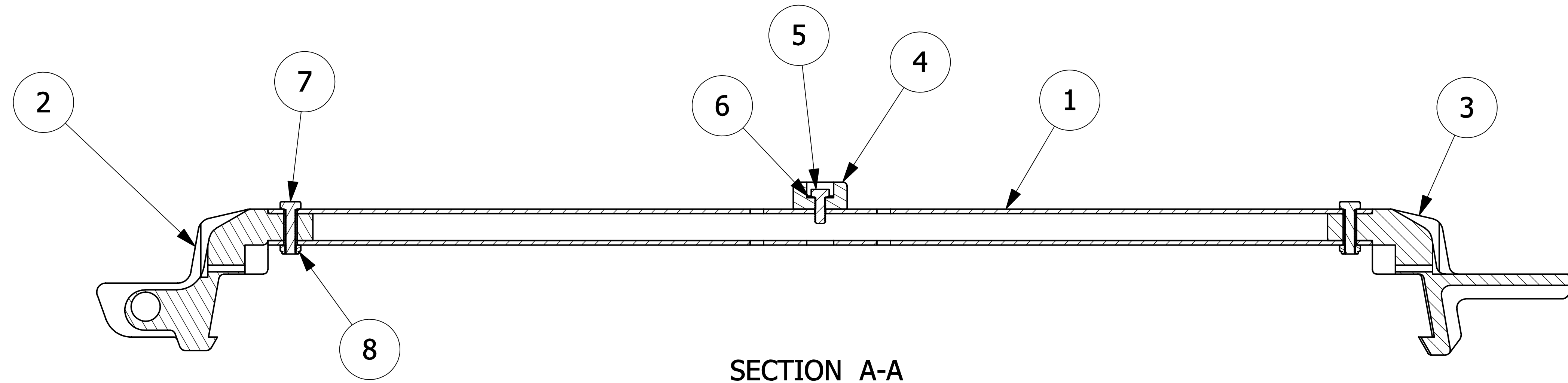
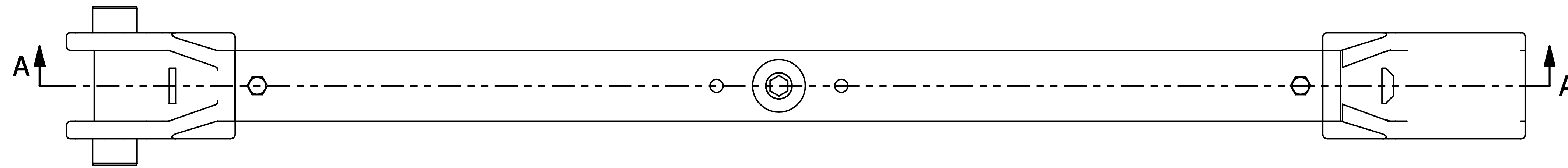


NO.	PART NAME	PART#	REQ'D	MATERIAL
1	HATCH COVER ARM	AE3007	1	ALUMINUM
2	HATCH COVER HINGE ASSEMBLY 30"	HEC3007TRA	1	SEE DWG
3	LATCH CASTING 30"	LEC30TR	1	ALUMINUM
4	BUMPER	PHC30B	1	SBR
5	HEX BOLT 5/16"-18 X 3/4"	GA34	1	CS Z/P
6	SPRING WASHER 3/8"	KL103SW	1	1074 CS
7	HEX BOLT 5/16"-18 X 1 1/4"	R20ABS	2	18-8 SS
8	HEX LOCK NUT 5/16"-18	R20ANS	2	18-8 SS



SECTION A-A

A	BRG	12-2-08	NEW PART ADDED TO SYSTEM
REV	BY	DATE	DESCRIPTION
PART NAME: HATCH COVER ARM ASSEMBLY 30"			
MATERIAL: SEE BOM			
PROJECT #:	060314	SHEET #:	1 OF 1
DRAWING #:	D24278	PART #:	AE3007TRA
APPROVED FOR PRODUCTION BY:		PJG	SCALE: 1:2
PRODUCTION DATE:		12/2/2008	

UNLESS OTHERWISE SPECIFIED DIMENSIONAL TOLERANCES	FRACTIONAL:	±1/16	DRAWN BY:	WRB
	X.XX:	±.03	CHECKED BY:	PJG
	X.XXX:	±.015	PROTOTYPE BY:	WRB
	ANGULAR:	±1°	PROTOTYPE DATE:	10/18/2007
THIS PRINT, PROPERTY OF SALCO PRODUCTS INC, CONTAINS PROPRIETARY INFORMATION AND MUST NOT BE COPIED, REPRODUCED, OR USED DETRIMENTALLY TO OUR INTEREST.				
THIRD ANGLE PROJECTION				