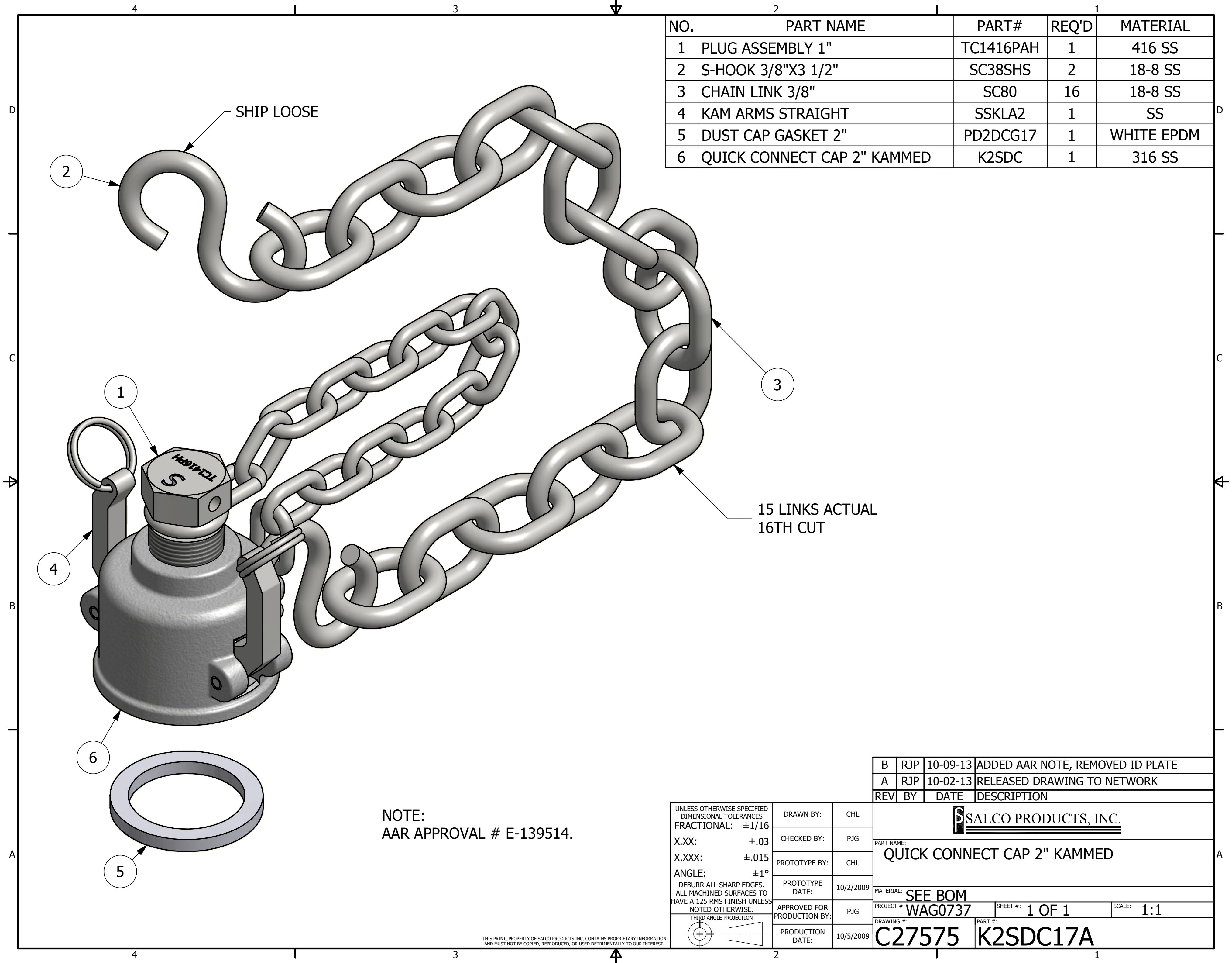


NO.	PART NAME	PART#	REQ'D	MATERIAL
1	PLUG ASSEMBLY 1"	TC1416PAH	1	416 SS
2	S-HOOK 3/8"X3 1/2"	SC38SHS	2	18-8 SS
3	CHAIN LINK 3/8"	SC80	16	18-8 SS
4	KAM ARMS STRAIGHT	SSKLA2	1	SS
5	DUST CAP GASKET 2"	PD2DCG17	1	WHITE EPDM
6	QUICK CONNECT CAP 2" KAMMED	K2SDC	1	316 SS



NOTE:  
AAR APPROVAL # E-139514.

REV	BY	DATE	DESCRIPTION
B	RJP	10-09-13	ADDED AAR NOTE, REMOVED ID PLATE
A	RJP	10-02-13	RELEASED DRAWING TO NETWORK

UNLESS OTHERWISE SPECIFIED DIMENSIONAL TOLERANCES FRACTIONAL: $\pm 1/16$ X.XX: $\pm .03$ X.XXX: $\pm .015$ ANGLE: $\pm 1^\circ$ DEBURR ALL SHARP EDGES. ALL MACHINED SURFACES TO HAVE A 125 RMS FINISH UNLESS NOTED OTHERWISE. THIRD ANGLE PROJECTION	DRAWN BY:	CHL
	CHECKED BY:	PJG
	PROTOTYPE BY:	CHL
	PROTOTYPE DATE:	10/2/2009
	APPROVED FOR PRODUCTION BY:	PJG
	PRODUCTION DATE:	10/5/2009

<b>SALCO PRODUCTS, INC.</b>		
PART NAME: <b>QUICK CONNECT CAP 2" KAMMED</b>		
MATERIAL: <b>SEE BOM</b>		
PROJECT #:	WAG0737	SHEET #: 1 OF 1
DRAWING #:	C27575	SCALE: 1:1
PART #:	K2SDC17A	