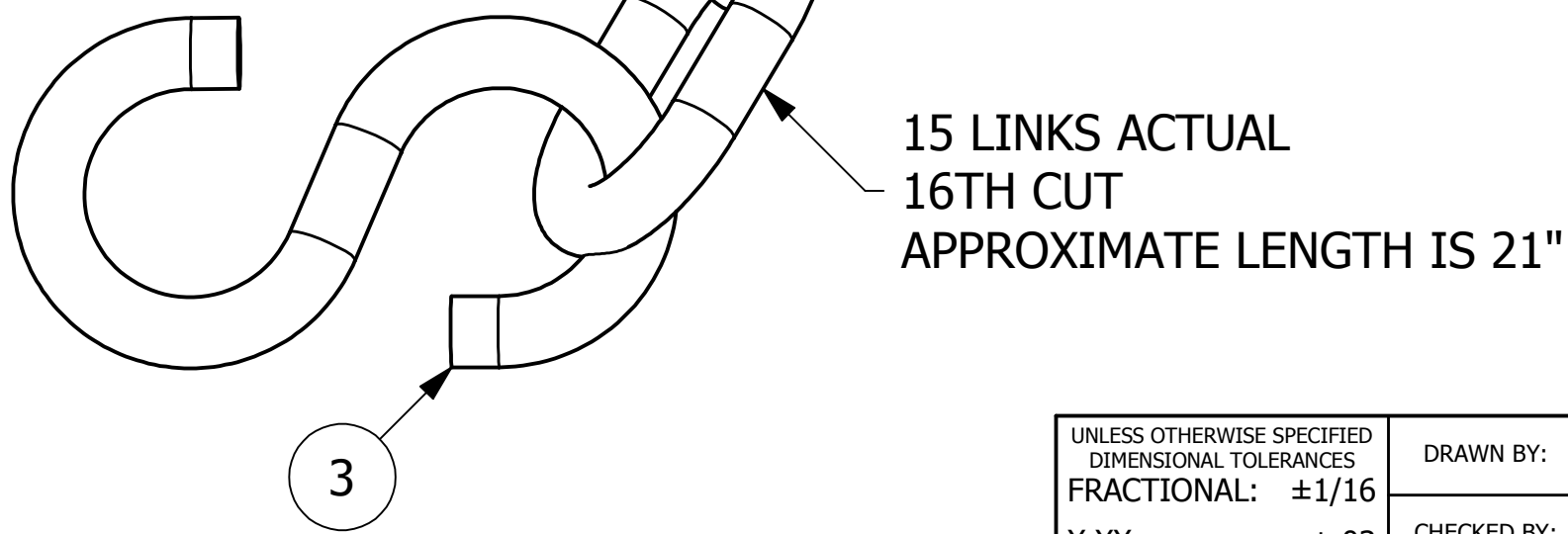
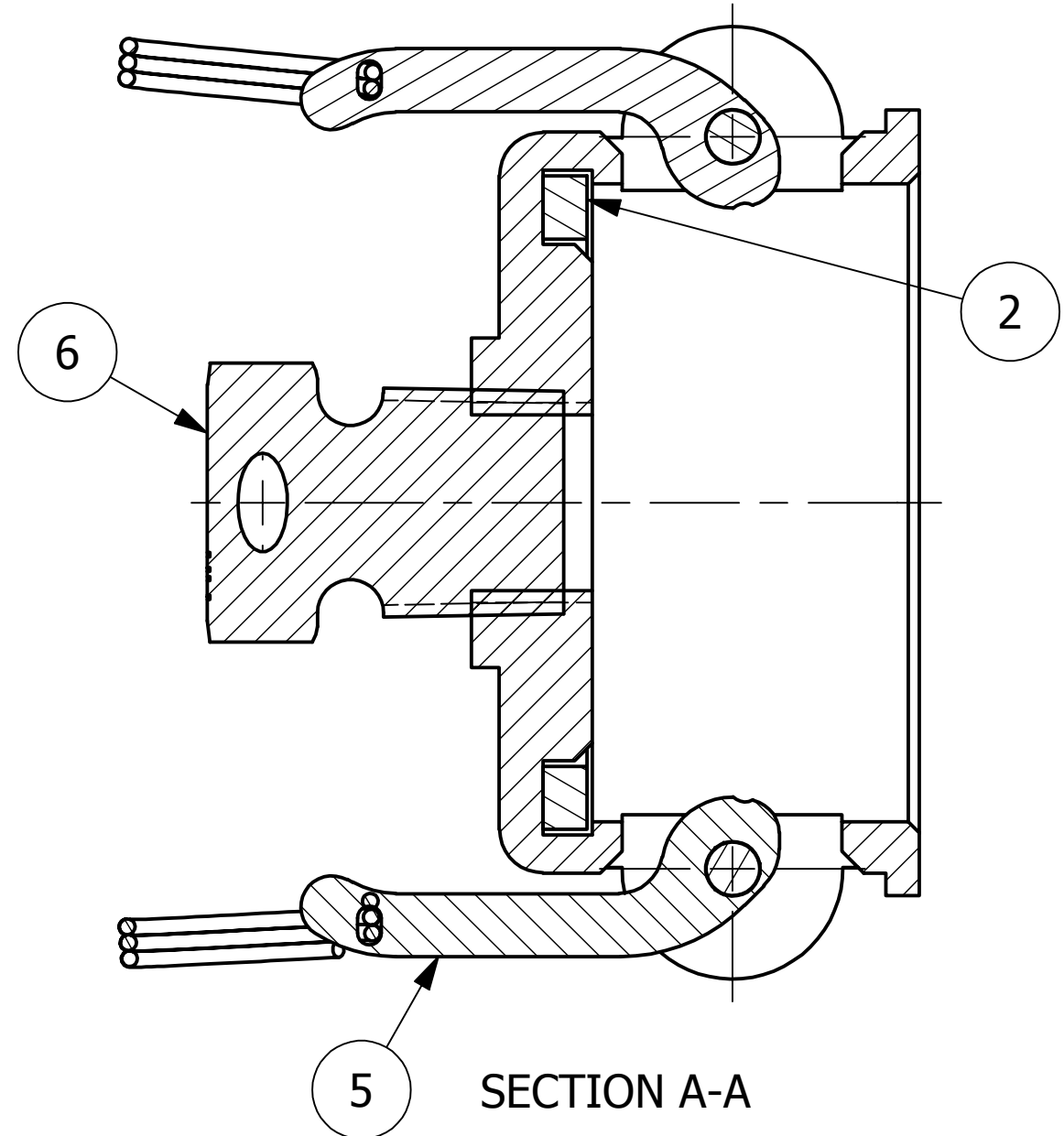
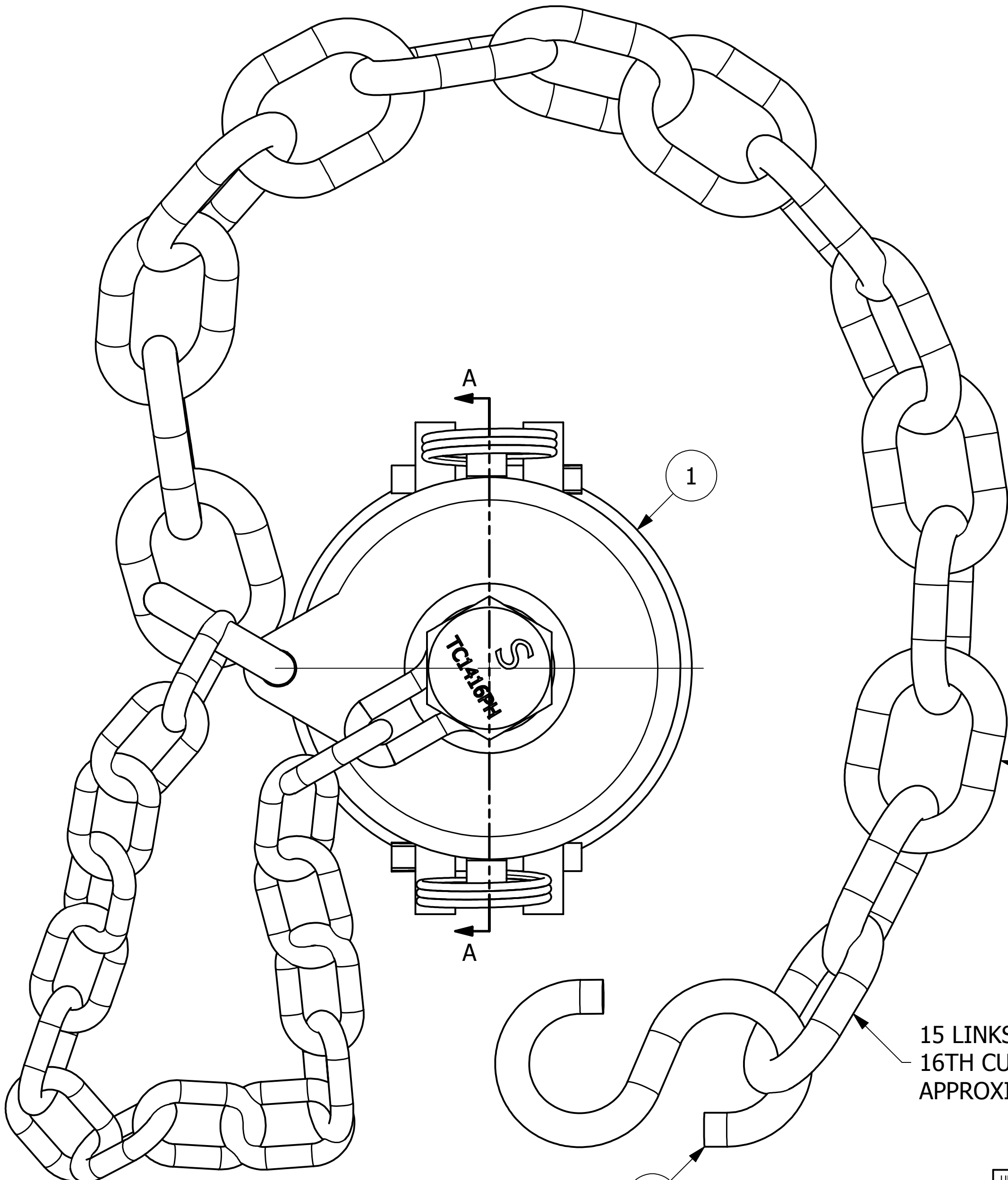


| NO. | PART NAME                   | PART #    | REQ'D | MATERIAL |
|-----|-----------------------------|-----------|-------|----------|
| 1   | QUICK CONNECT CAP 3" CAMMED | K3SDC     | 1     | 316 SS   |
| 2   | DUST CAP GASKET 3"          | PD3DCG6   | 1     | VITON A  |
| 3   | S-HOOK 3/8"X3 1/2"          | SC38SHS   | 2     | 18-8 SS  |
| 4   | CHAIN LINK 3/8"             | SC80      | 16    | 18-8 SS  |
| 5   | CAM ARMS STRAIGHT           | SSKLA     | 2     | 304 SS   |
| 6   | PLUG ASSEMBLY 1"            | TC1416PAH | 1     | 416 SS   |



- NOTES:**
1. THIS ASSEMBLY IS NOT DOT APPROVED AND CAN BE USED ONLY ON AAR STENCILED CARS.
  2. QUICK DISCONNECT MEETS A-A-59326D.
  3. DUST CAP IS 316 SS GRADE CF-8M ASTM# A743.
  4. AAR APPROVAL # E-139514.

| REV | BY  | DATE     | DESCRIPTION  |
|-----|-----|----------|--|
| D   | RJP | 6-21-17  | PD3DCG6 WAS PD3DCG8                                      |
| C   | RJP | 11-4-13  | AAR APPROVAL # WAS E-039015<br>MIL SPEC WAS MIL-C-27487G |
| B   | TAJ | 6-23-11  | UPDATED TO INVENTOR                                      |
| A   | CHL | 12-29-03 | AAR APPROVAL # WAS E-939034                              |

|   |                             |           |
|---|-----------------------------|-----------|
| UNLESS OTHERWISE SPECIFIED<br>DIMENSIONAL TOLERANCES<br>FRACTIONAL: $\pm 1/16$<br>X.XX: $\pm .03$<br>X.XXX: $\pm .015$<br>ANGLE: $\pm 1^\circ$<br>DEBURR ALL SHARP EDGES.<br>ALL MACHINED SURFACES TO<br>HAVE A 125 RMS FINISH UNLESS<br>NOTED OTHERWISE.<br>THIRD ANGLE PROJECTION | DRAWN BY:                   | CHL       |
|   | CHECKED BY:                 | ACC       |
|   | PROTOTYPE BY:               | CHL       |
|   | PROTOTYPE DATE:             | 7/11/2002 |
|   | APPROVED FOR PRODUCTION BY: | ACC       |
|   | PRODUCTION DATE:            | 7/11/2002 |

**SALCO PRODUCTS, INC.**

PART NAME: **QUICK CONNECT CAP 3" CAMMED**

MATERIAL: **SEE BOM**

PROJECT #: \_\_\_\_\_ SHEET #: **1 OF 1** SCALE: **1:1**

DRAWING #: **C17088** PART #: **K3SDC6A**