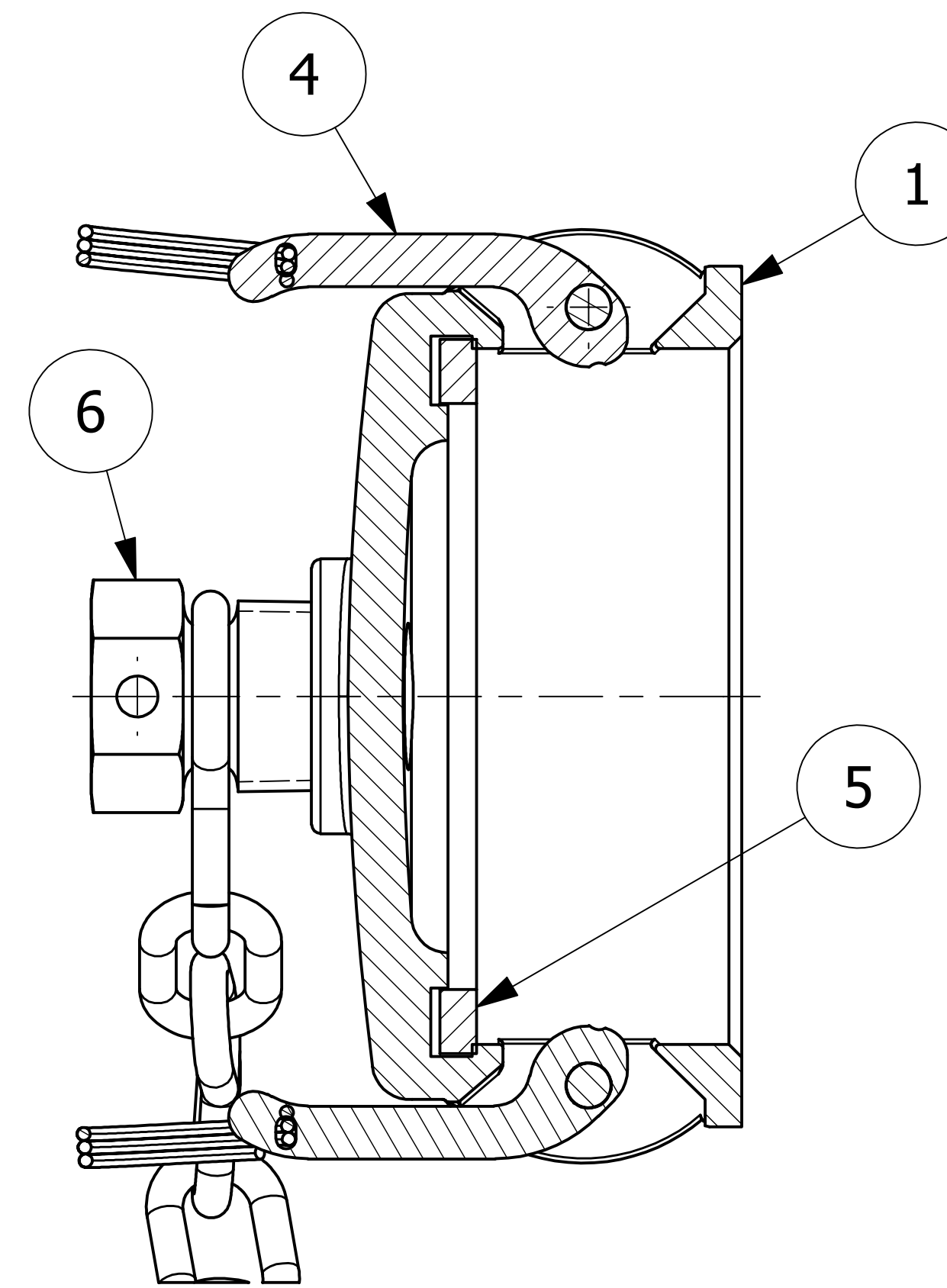
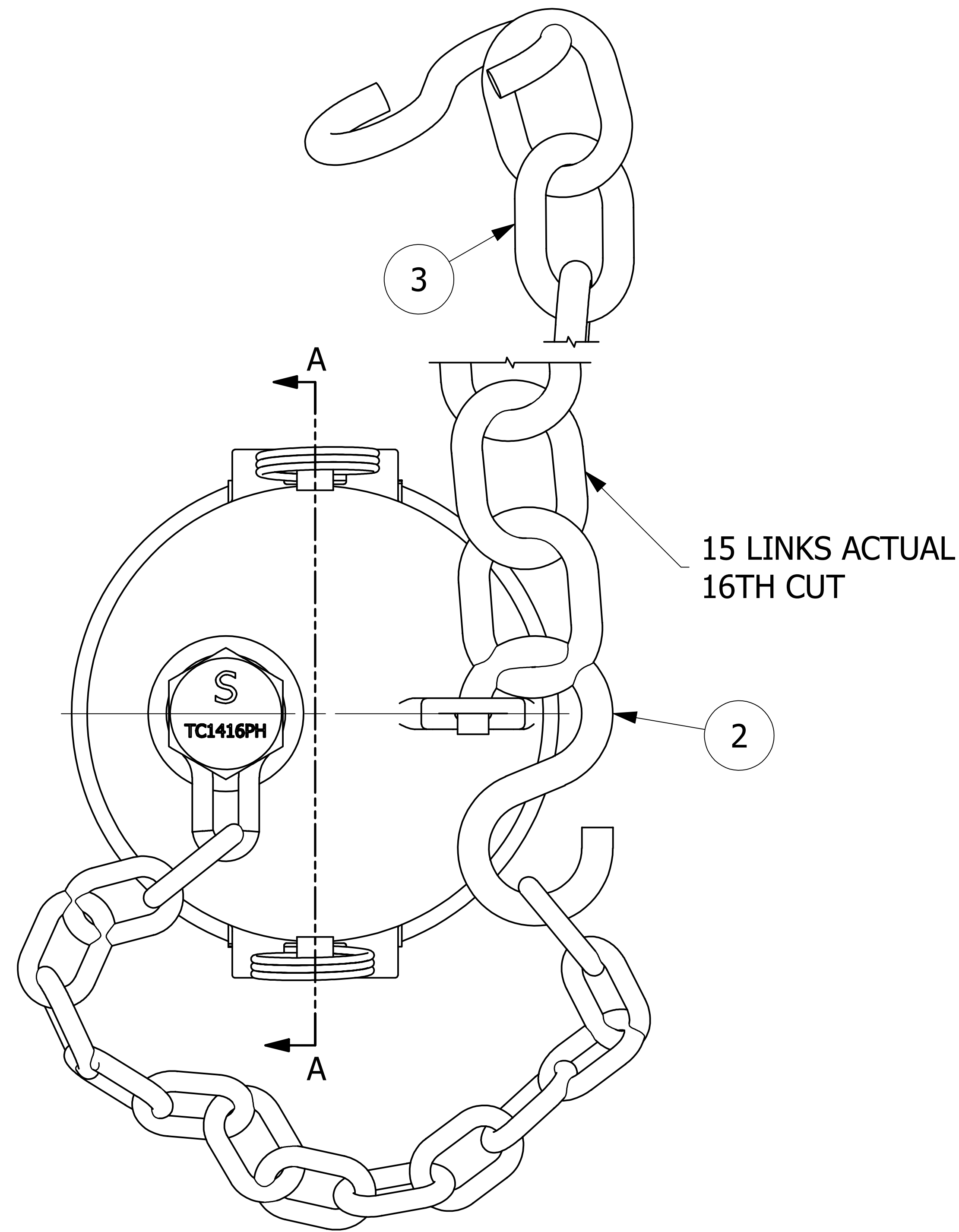


NO.	PART NAME	PART#	REQ'D	MATERIAL
1	QUICK CONNECT CAP 4" KAMMED	K4SDC	1	316 SS
2	S-HOOK 3/8"X3 1/2"	SC38SHS	2	18-8 SS
3	CHAIN LINK 3/8"	SC80	16	18-8 SS
4	KAM ARMS STRAIGHT	SSKLA	2	304 SS
5	DUST CAP GASKET 4"	SDDCG3	1	BLACK EPDM SC
6	PLUG ASSEMBLY 1"	TC1416PAH	1	416 SS



NOTES:

1. THIS ASSEMBLY IS NOT DOT APPROVED AND CAN BE USED ONLY ON AAR STENCILED CARS.
2. QUICK DISCONNECT MEETS A-A-59326D.
3. DUST CAP IS 316 SS ASTM# A743 GRADE CF-8M.
4. AAR APPROVAL # E-139514.

SECTION A-A

C	RJP	12-20-13	AAR APPROVAL # WAS E-039015, MIL SPEC WAS MIL-C-27487G
B	CHL	1-13-11	UPDATED DRAWING TO INVENTOR
A	CHL	1-12-04	AAR APPROVAL # WAS E-939034
REV	BY	DATE	DESCRIPTION

UNLESS OTHERWISE SPECIFIED DIMENSIONAL TOLERANCES	DRAWN BY:	ACC
FRACTIONAL: ±1/16	CHECKED BY:	
X.XX: ±.03	PROTOTYPE BY:	ACC
X.XXX: ±.015	PROTOTYPE DATE:	5/31/2001
ANGULAR: ±1°	APPROVED FOR PRODUCTION BY:	ACC
DEBURR ALL SHARP EDGES. ALL MACHINED SURFACES TO HAVE A 125 RMS FINISH UNLESS NOTED OTHERWISE.	PRODUCTION DATE:	5/31/2001
THIRD ANGLE PROJECTION		

SALCO PRODUCTS, INC.		
PART NAME: QUICK CONNECK CAP 4" KAMMED		
MATERIAL: SEE BOM		
PROJECT #: 010521	SHEET #: 1 OF 1	SCALE: 1:1
DRAWING #: D15811	PART #: K4SDC3A	