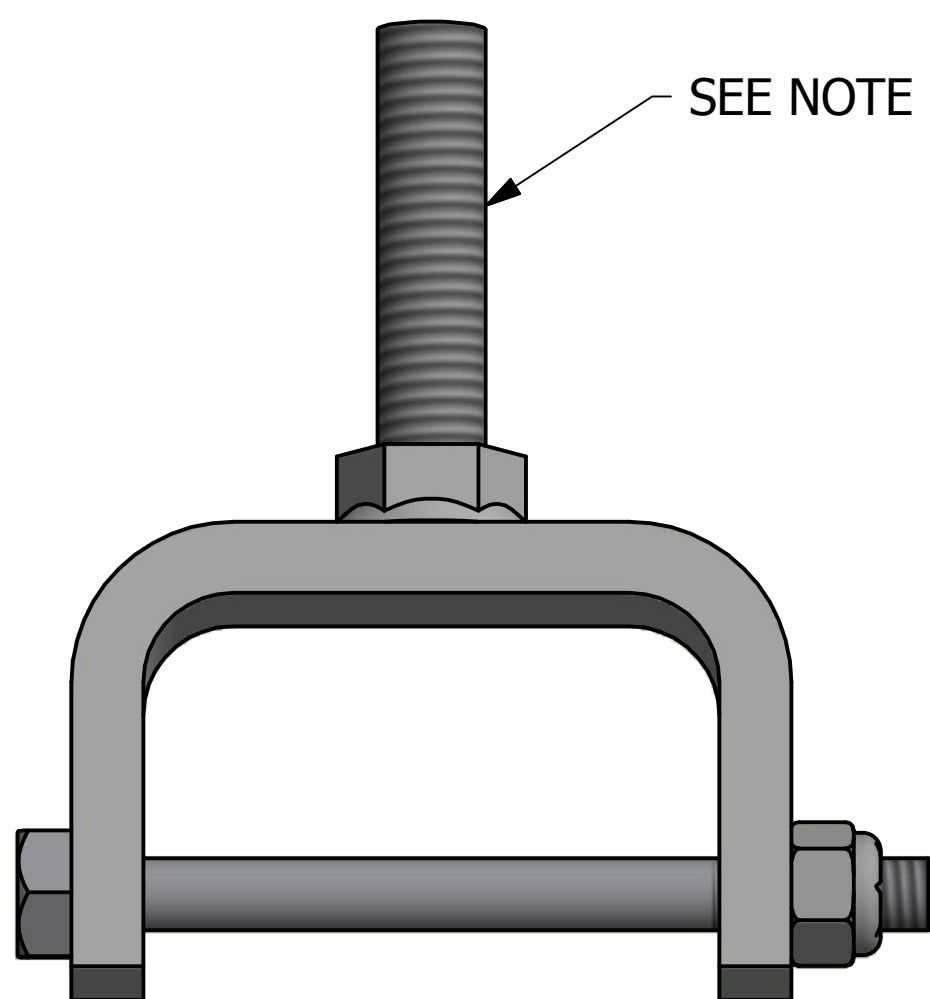
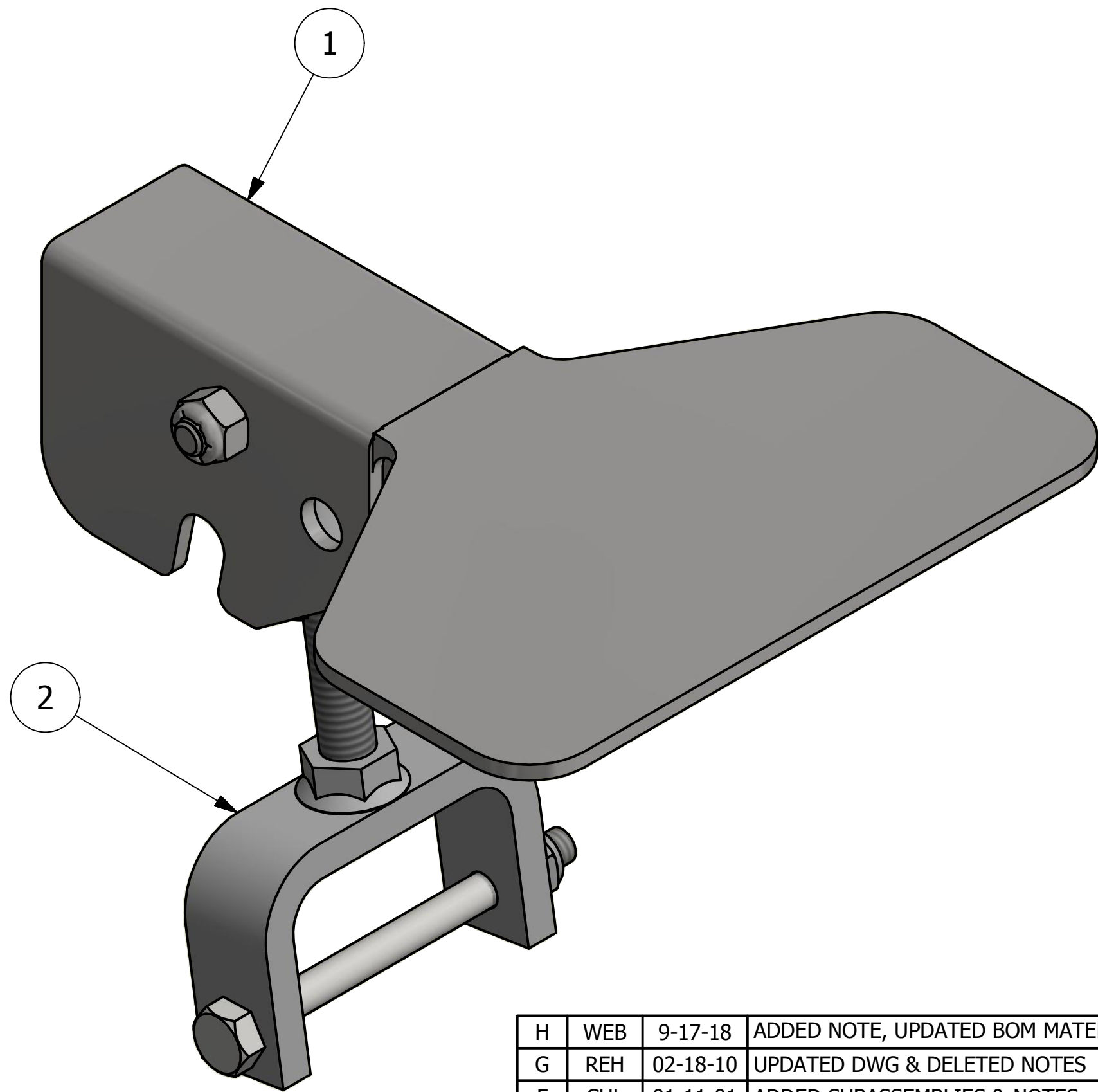
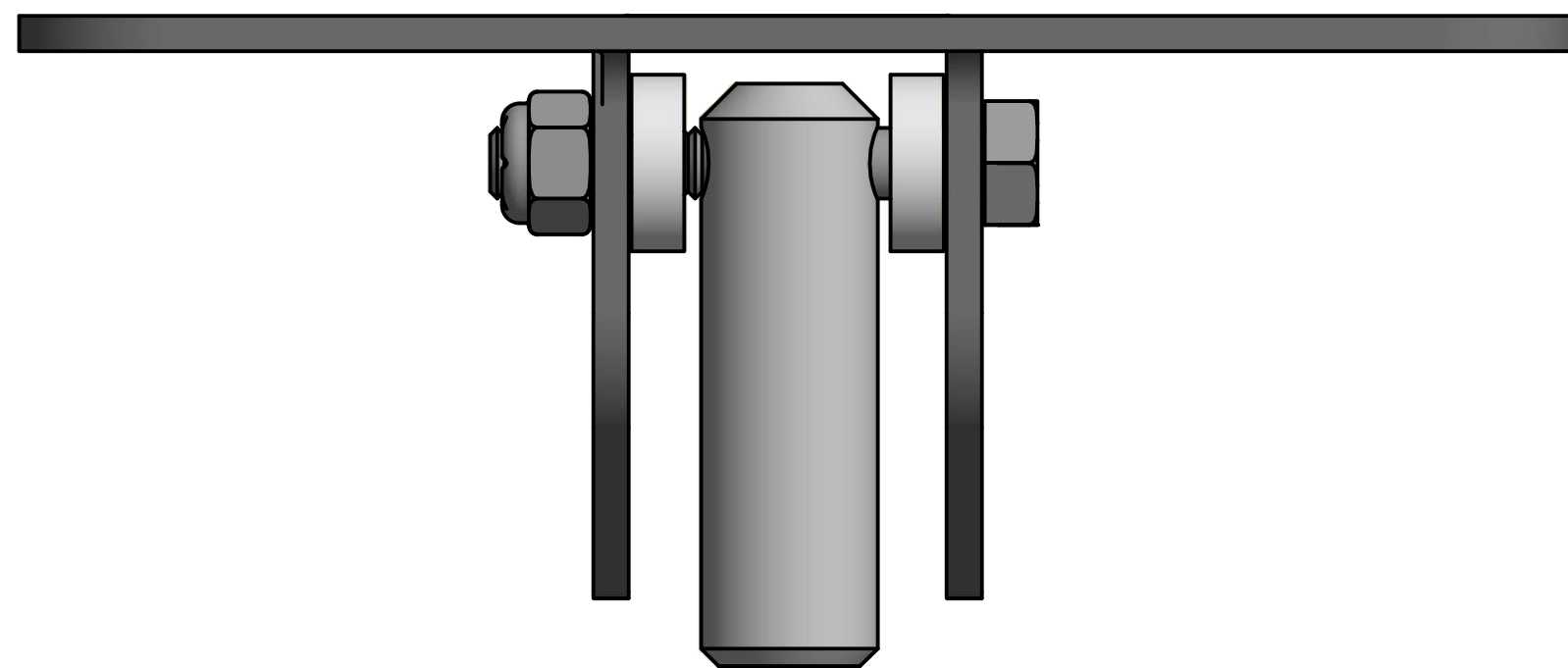


NO.	PART NAME	PART#	REQ'D	MATERIAL
1	HATCH COVER LATCH	LAL20LP	1	SS
2	HATCH COVER EYEBOLT ASSEMBLY	TE20PUA	1	SS/CS



NOTE:
APPLY JET-LUBE WHITE KNIGHT ANTI-SEIZE DURING ASSEMBLY

REV	BY	DATE	DESCRIPTION
H	WEB	9-17-18	ADDED NOTE, UPDATED BOM MATERIAL
G	REH	02-18-10	UPDATED DWG & DELETED NOTES
F	CHL	01-11-01	ADDED SUBASSEMBLIES & NOTES
E	FOD	12-18-98	CHANGED MATERIAL FOR ITEM #1
D	MRC		HCN20 WAS HCN20S & HCN20S REQUIRED 2
C	MRC	12-11-97	HCN20S WAS HCN20
B	MRC	08-25-97	UPDATED BOM
A	ACC	10-18-95	UPDATED BOM

UNLESS OTHERWISE SPECIFIED DIMENSIONAL TOLERANCES FRACTIONAL: $\pm 1/16$ X.XX: $\pm .015$ X.XXX: $\pm .005$ ANGLE: $\pm 1^\circ$ DEBURR ALL SHARP EDGES. ALL MACHINED SURFACES TO HAVE A 125 RMS FINISH UNLESS NOTED OTHERWISE.	DRAWN BY:	BRW
	CHECKED BY:	CHL
	PROTOTYPE BY:	BRW
	PROTOTYPE DATE:	10/31/1994
THIRD ANGLE PROJECTION	APPROVED FOR PRODUCTION BY:	ACC
	PRODUCTION DATE:	10/31/1994

SALCO PRODUCTS, INC.

PART NAME:
HATCH COVER LATCH ASSEMBLY 20"

MATERIAL: **SEE BOM**

PROJECT #: SHEET #: **1 OF 1** SCALE: **3:2**

DRAWING #: **C7179** PART #: **LAL20PM**