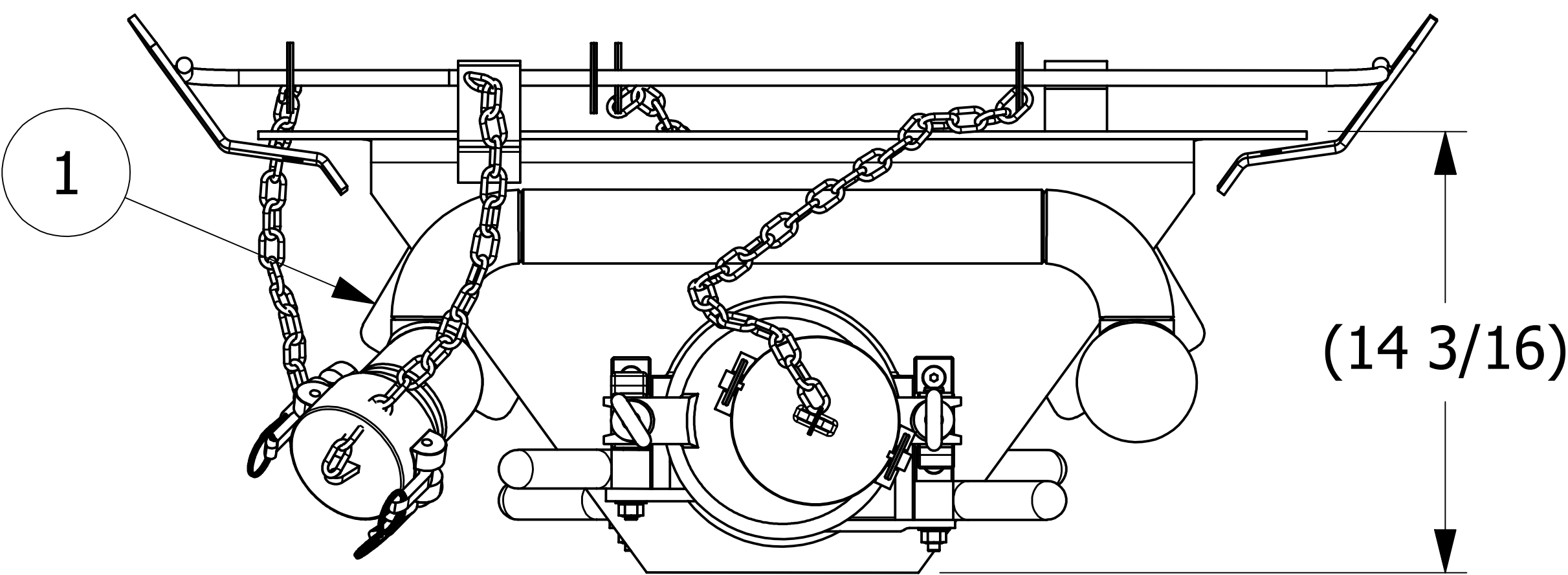
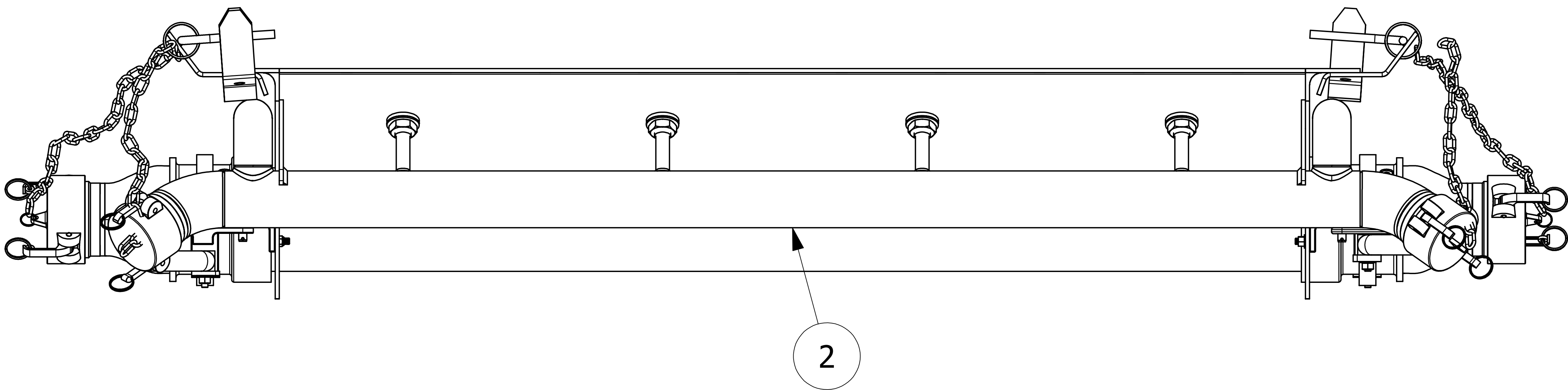
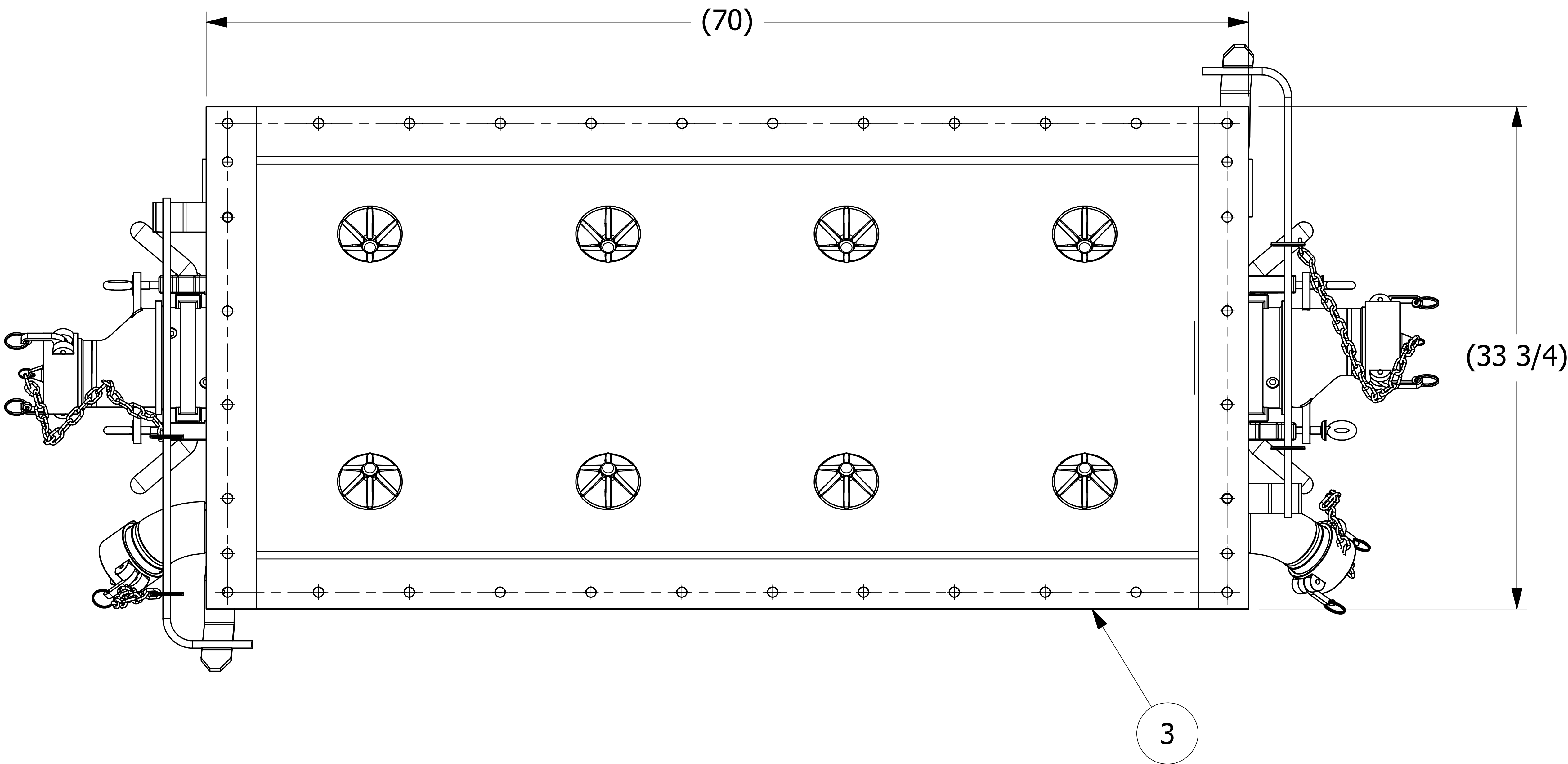
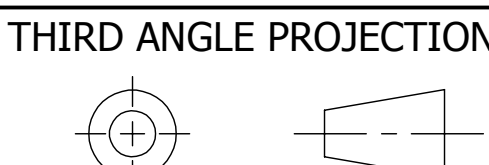


NO.	PART NAME	PART #	REQ'D	MATERIAL
1	PIPE SUPPORT 3"	A26283	4	6061-T6 ALUMINUM
2	OUTLET GATE AIR MANIFOLD	RC111A15AM	1	ALUMINUM
3	OUTLET GATE ACF 5131 W/ FLUIDIZER HOLES	RC111A864C	1	ALUMINUM



- NOTES:
1. AIR INLET ARE 3" QUICK CONNECTS ON A 45 DEGREE DOWN ANGLE.
 2. AIR INLET INTO AERATION CONES IS 3/4"
 3. ALL PIPING IS ALUMINUM. GATE BODY AND CONTROL TUBE ARE ALUMINUM.

UNLESS OTHERWISE SPECIFIED
DIMENSIONAL TOLERANCES
FRACTIONAL: $\pm 1/16$
X.XX: $\pm .03$
X.XXX: $\pm .015$
ANGULAR: $\pm 1^\circ$
DEBURR ALL SHARP EDGES.
ALL MACHINED SURFACES TO
HAVE A 125 RMS FINISH UNLESS
NOTED OTHERWISE.



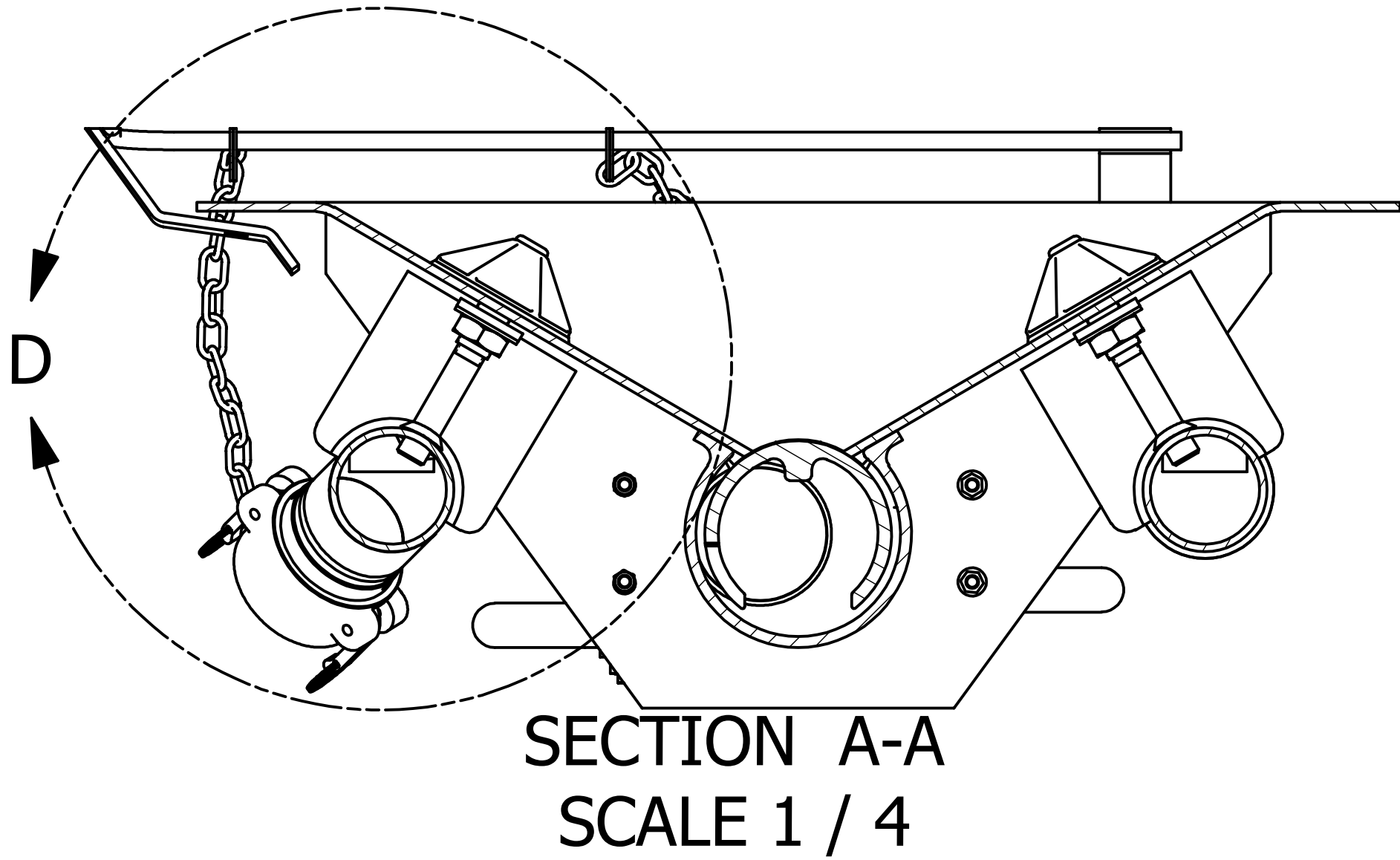
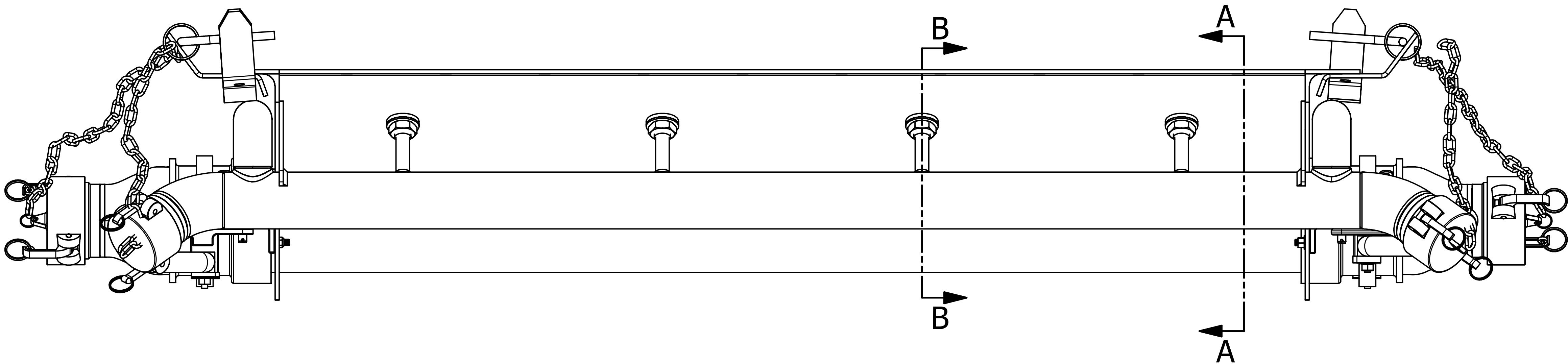
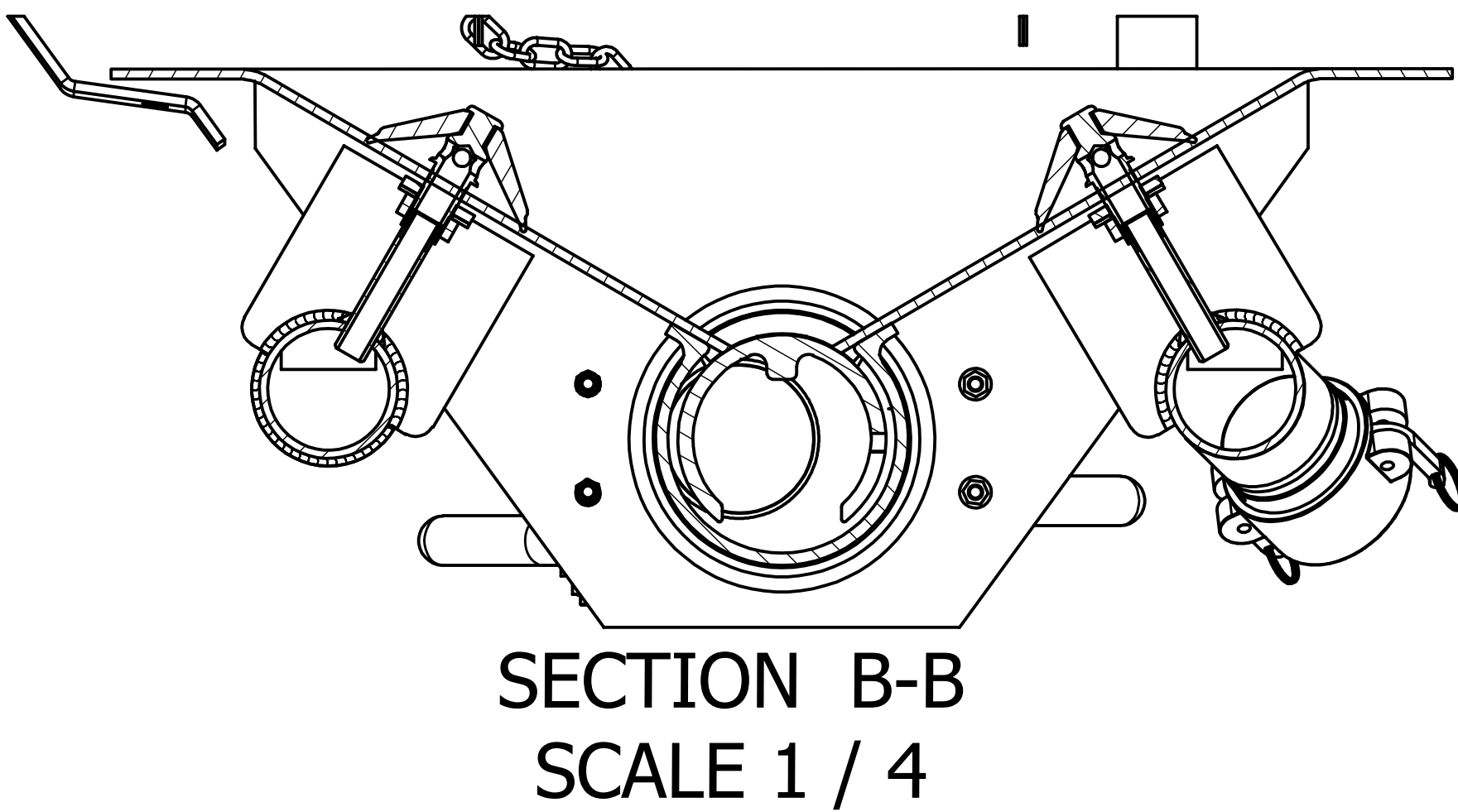
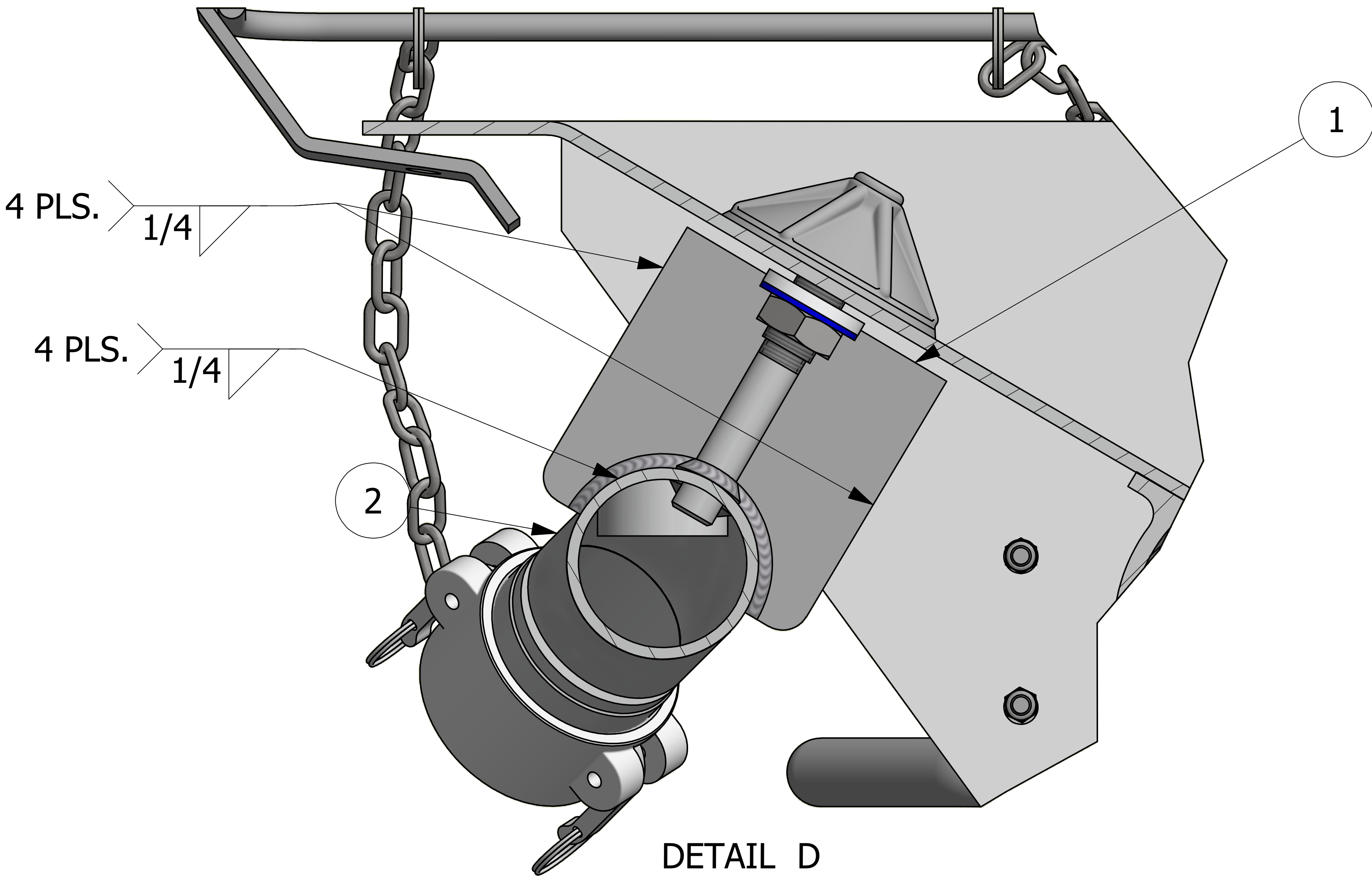
DRAWN BY:	CHL
CHECKED BY:	VD
PROTOTYPE BY:	CHL
PROTOTYPE DATE:	10/6/2009
APPROVED FOR PRODUCTION BY:	VD
PRODUCTION DATE:	5/17/2011

B	WEB	3-14-18	UPDATED VIEWS, SORTED BOM
A	CHL	5-17-11	DRAWING ADDED TO NETWORK
REV	BY	DATE	DESCRIPTION

			
PART NAME: 8 PAD FLUIDIZED OUTLET GATE ACF 5131			
MATERIAL: SEE BOM			
PROJECT #:	080721	SHEET #:	1 OF 2
DRAWING #:	E19233	PART #:	RC111AKAA64C
		SCALE:	1:1


NO.	PART NAME	PART#	REQ'D	MATERIAL
1	PIPE SUPPORT 3"	A26283	4	6061-T6 ALUMINUM
2	OUTLET GATE AIR MANIFOLD	RC111A15AM	1	ALUMINUM
3	OUTLET GATE ACF 5131 W/ FLUIDIZER HOLES	RC111A864C	1	ALUMINUM

NOTES:
WELDS IN ACCORDANCE W/ AWS D1.2 / D1.2M:2003
STRUCTURAL ALUMINUM WELDING SPECIFICATIONS.



B	WEB	3-14-18	UPDATED VIEWS, SORTED BOM
A	CHL	5-17-11	DRAWING ADDED TO NETWORK
REV	BY	DATE	DESCRIPTION

UNLESS OTHERWISE SPECIFIED DIMENSIONAL TOLERANCES FRACTIONAL: $\pm 1/16$ X.XX: $\pm .03$ X.XXX: $\pm .015$ ANGULAR: $\pm 1^\circ$ DEBURR ALL SHARP EDGES. ALL MACHINED SURFACES TO HAVE A 125 RMS FINISH UNLESS NOTED OTHERWISE.	DRAWN BY:	CHL
	CHECKED BY:	VD
	PROTOTYPE BY:	CHL
	PROTOTYPE DATE:	10/6/2009
	APPROVED FOR PRODUCTION BY:	VD
THIRD ANGLE PROJECTION	PRODUCTION DATE:	5/17/2011

		
PART NAME: 8 PAD FLUIDIZED OUTLET GATE ACF 5131		
MATERIAL: SEE BOM		
PROJECT #: 080721	SHEET #: 2 OF 2	SCALE: 1:1
DRAWING #: E19233	PART #: RC111AKAA64C	