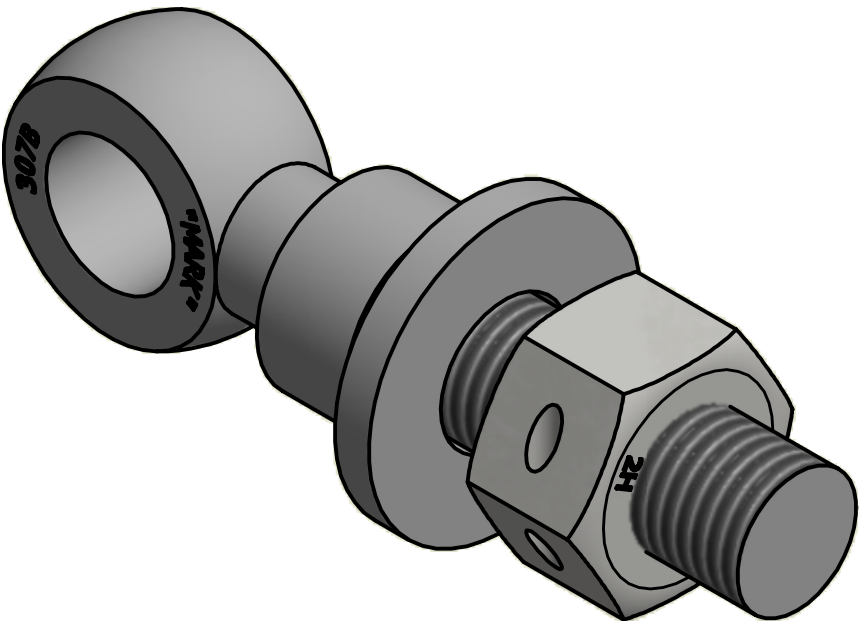

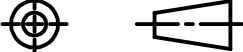


NO.	PART NAME	PART #	REQ'D	MATERIAL
1	EYEBOLT 7/8"X4 5/8"	EBR78458FT	1	CARBON STEEL
2	EYEBOLT SAFETY COLLAR 7/8"	COLLAR78S4T	1	304 SS
3	HEAVY HEX NUT 7/8"-9	N78XH	1	CARBON STEEL
4	FLAT WASHER 7/8"	WASH78T	1	CARBON STEEL

APPLY A BEAD OF WELD TO THE TWO END THREADS
AFTER INSTALLING COLLAR, WASHER, AND NUT.



ISOMETRIC VIEW

UNLESS OTHERWISE SPECIFIED DIMENSIONAL TOLERANCES		DRAWN BY:	CHL	A WEB 7-2-14 RELEASED FOR PRODUCTION	
		CHECKED BY:	VD	REV BY	DATE DESCRIPTION
FRACTIONAL: ±1/16		PROTOTYPE BY:	CHL	 SALCO PRODUCTS, INC.	
X.XX: ±.03		PROTOTYPE DATE:	1/14/2014		
X.XXX: ±.015		APPROVED FOR PRODUCTION BY:	WEB	PART NAME: EYEBOLT ASSEMBLY 7/8"X4 5/8"	
ANGULAR: ±1°		PRODUCTION DATE:	2/7/2014	MATERIAL: SEE BOM	
THIS PRINT, PROPERTY OF SALCO PRODUCTS INC., CONTAINS PROPRIETARY INFORMATION AND MUST NOT BE COPIED, REPRODUCED, OR USED DETRIMENTALLY TO OUR INTEREST.				PROJECT #: 130709FR	SHEET #: 1 OF 1
				DRAWING #: B38085	PART #: EB78458XHFTATC