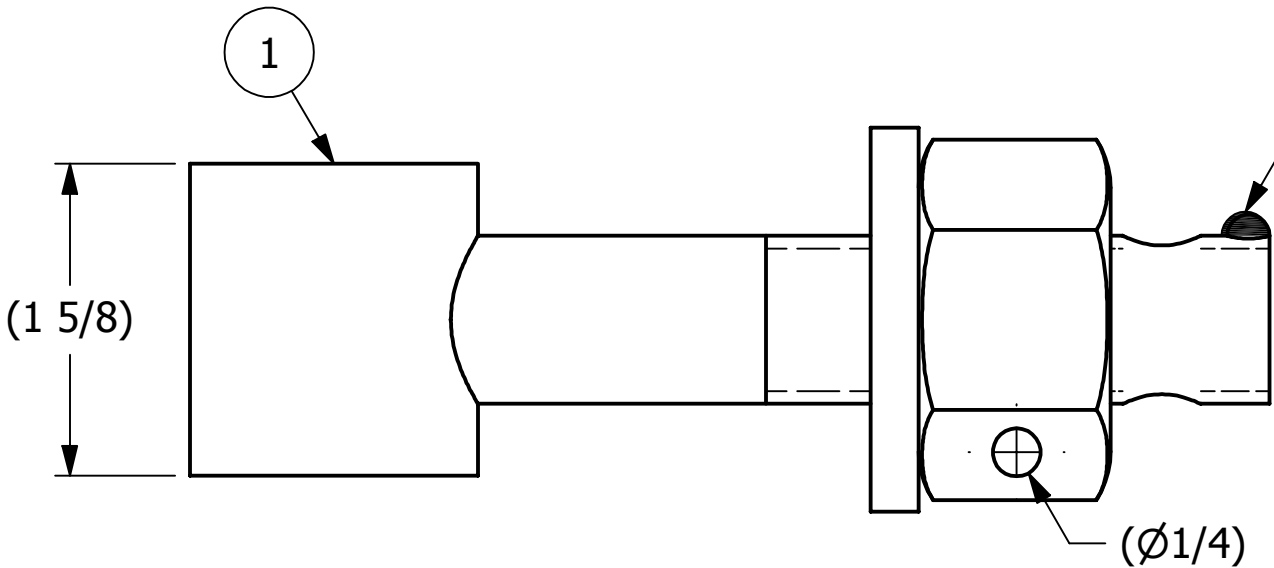
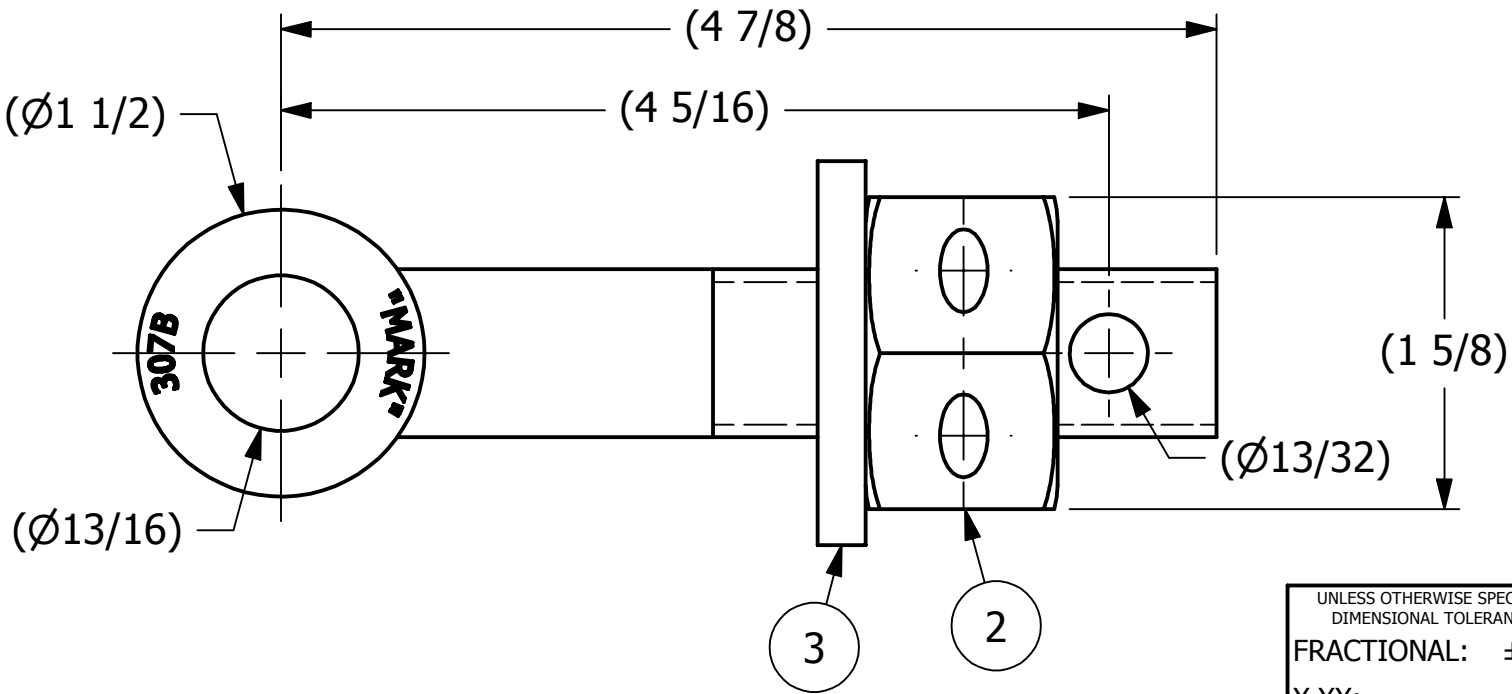
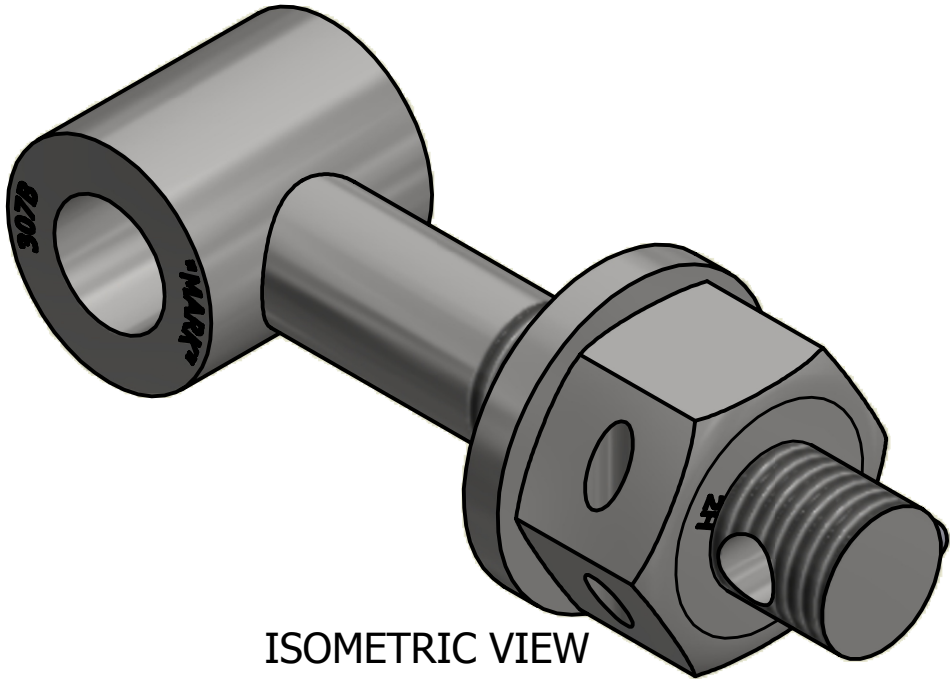


NO	PART NAME	PART#	REQ'D	MATERIAL
1	EYEBOLT 7/8"X7"	EBR78478TH	1	CS
2	HEAVY HEX NUT 7/8"-9	N78XSH	1	CS
3	FLAT WASHER 7/8"	WASH78T	1	CS




APPLY A BEAD OF WELD TO THE TWO
END THREADS AFTER INSTALLING WASHER AND NUT



B	JG	6-9-17	UPDATED PART DESCRIPTION
A	TAK	12-4-13	RELEASED FOR PRODUCTION
REV	BY	DATE	DESCRIPTION

UNLESS OTHERWISE SPECIFIED DIMENSIONAL TOLERANCES	DRAWN BY:	JJK
FRACTIONAL: $\pm 1/16$	CHECKED BY:	CHL
X.XX: $\pm .03$	PROTOTYPE BY:	JJK
X.XXX: $\pm .015$	PROTOTYPE DATE:	5/21/2009
ANGULAR: $\pm 1^\circ$	APPROVED FOR PRODUCTION BY:	CHL
DEBURR ALL SHARP EDGES. ALL MACHINED SURFACES TO HAVE A 125 RMS FINISH UNLESS NOTED OTHERWISE.	PRODUCTION DATE:	12/4/2013
THIRD ANGLE PROJECTION		

		
PART NAME: EYEBOLT ASSEMBLY 7/8"X4 7/8"		
MATERIAL: SEE BOM		
PROJECT #: 130923FR2	SHEET #: 1 OF 1	SCALE: 1:1
DRAWING #: B37679	PART #: EB78478X2THHT	

THIS PRINT, PROPERTY OF SALCO PRODUCTS INC., CONTAINS PROPRIETARY INFORMATION
AND MUST NOT BE COPIED, REPRODUCED, OR USED DETRIMENTALLY TO OUR INTEREST.