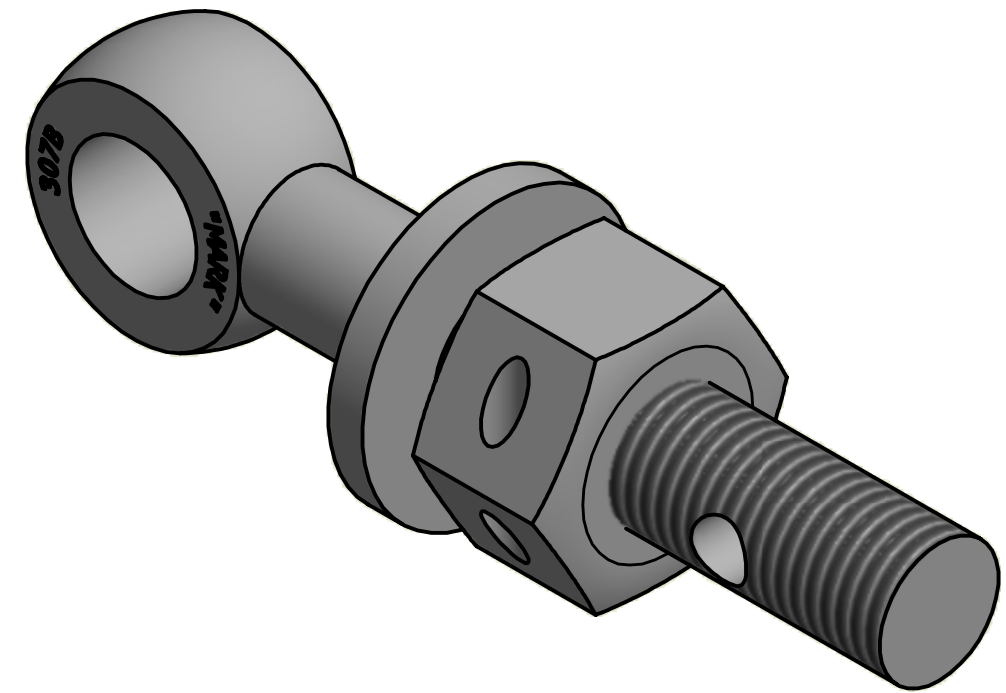
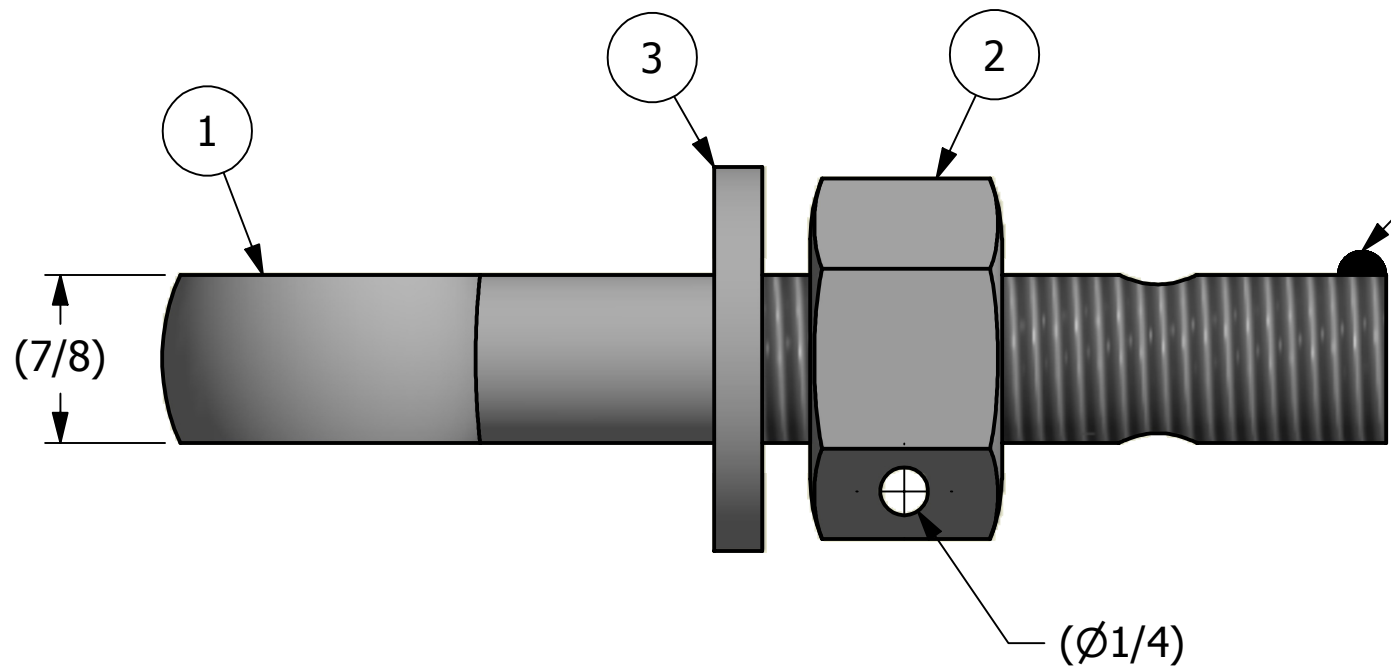
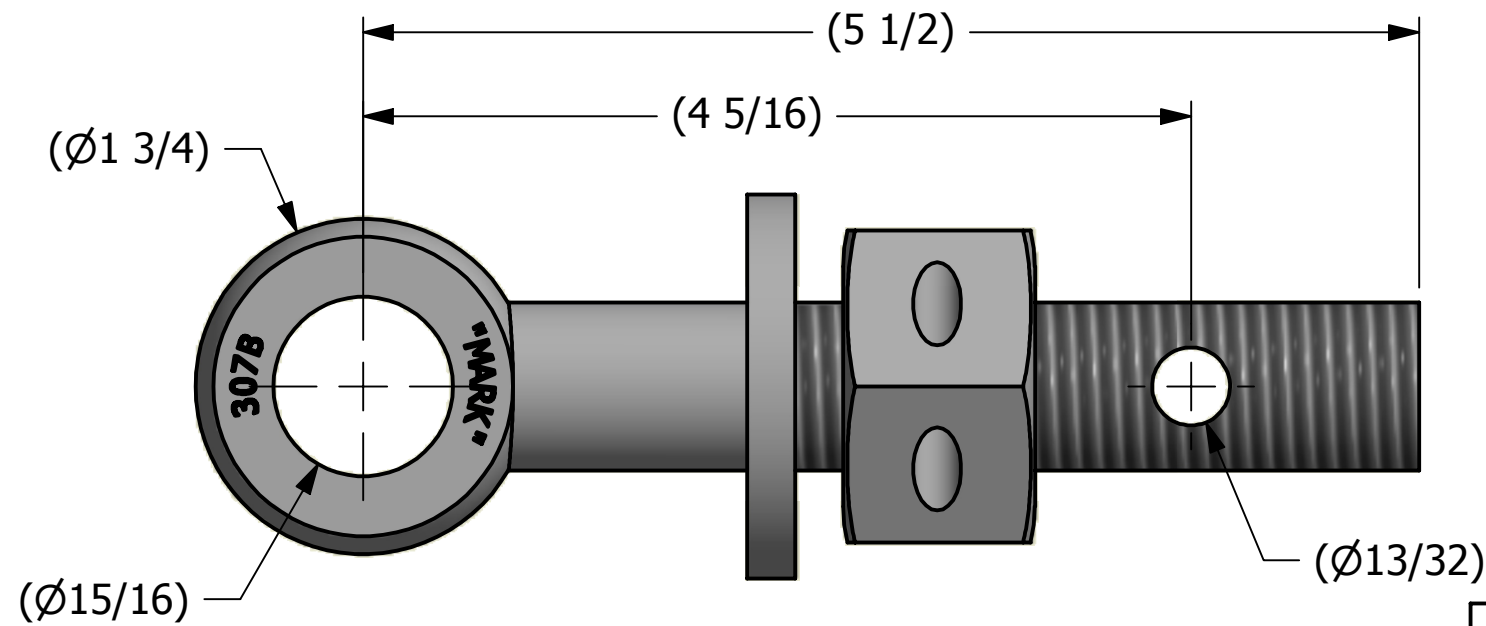


NO.	PART NAME	PART#	REQ'D	MATERIAL
1	EYEBOLT 7/8"X5 1/2"	EBR7855H	1	CARBON STEEL
2	HEAVY HEX NUT 7/8"-9	N78XSH	1	CARBON STEEL
3	FLAT WASHER 7/8"	WASH78T	1	CARBON STEEL

APPLY A BEAD OF WELD TO THE TWO END THREADS AFTER INSTALLING WASHER AND NUT



ISOMETRIC VIEW



B	RJP	10-17-13	EBR7855H WAS EBR7855HR, REMOVED A16204
A	KHK	10-16-13	RELEASED FOR PRODUCTION
REV	BY	DATE	DESCRIPTION

<small>UNLESS OTHERWISE SPECIFIED DIMENSIONAL TOLERANCES</small> FRACTIONAL: ±1/16 X.XX: ±.03 X.XXX: ±.015 ANGULAR: ±1° <small>DEBURR ALL SHARP EDGES. ALL MACHINED SURFACES TO HAVE A 125 RMS FINISH UNLESS NOTED OTHERWISE.</small> <small>THIRD ANGLE PROJECTION</small>	DRAWN BY:	KHK
	CHECKED BY:	CHL
	PROTOTYPE BY:	KHK
	PROTOTYPE DATE:	10/15/2013
	APPROVED FOR PRODUCTION BY:	CHL
	PRODUCTION DATE:	10/16/2013

SALCO PRODUCTS, INC.

PART NAME: **EYEBOLT ASSEMBLY 7/8" X 5 1/2"**

MATERIAL: **SEE BOM**

PROJECT #: **131013FR** SHEET #: **1 OF 1** SCALE: **1:1**

DRAWING #: **B37480** PART #: **EB7855XHHA**

THIS PRINT, PROPERTY OF SALCO PRODUCTS INC., CONTAINS PROPRIETARY INFORMATION AND MUST NOT BE COPIED, REPRODUCED, OR USED DETRIMENTALLY TO OUR INTEREST.