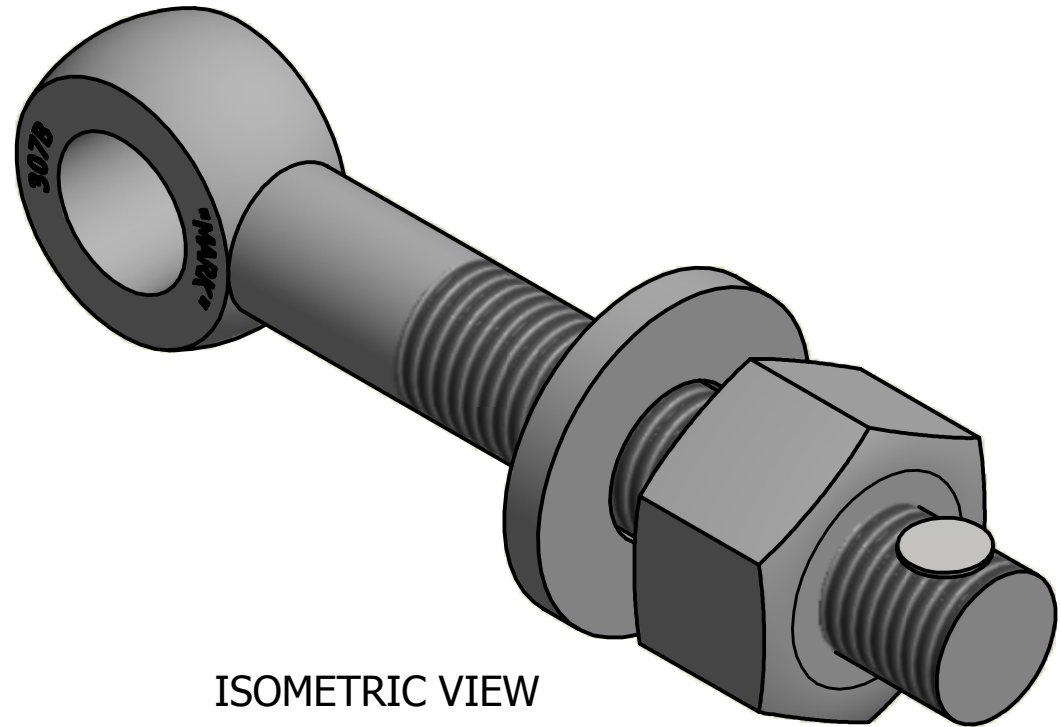
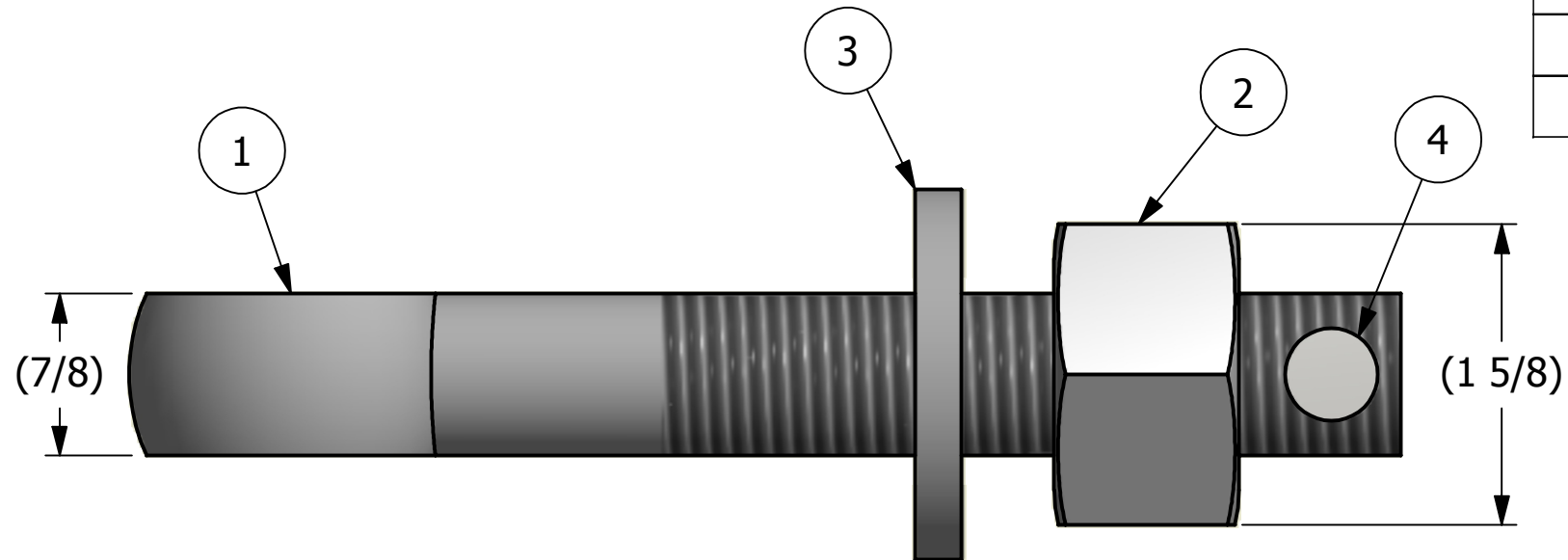
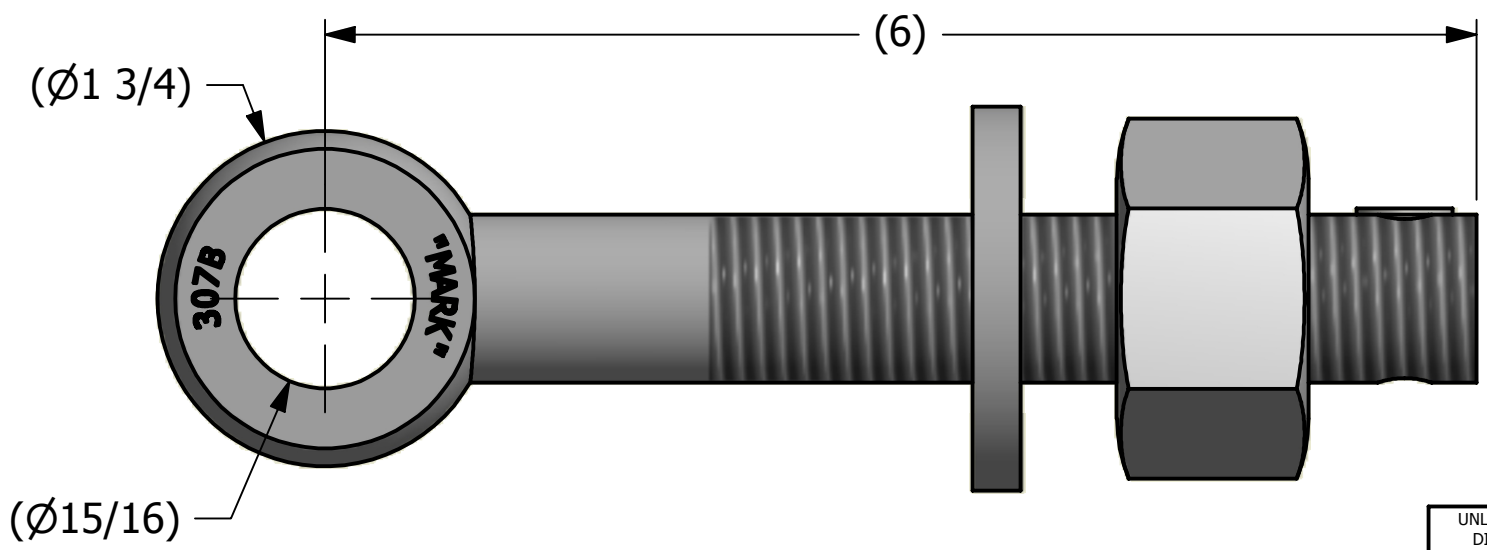


NO.	PART NAME	PART #	REQ'D	MATERIAL
1	EYEBOLT 7/8"X6"	EBR786R	1	CARBON STEEL
2	HEAVY HEX NUT 7/8"-9	N78XS	1	CARBON STEEL
3	FLAT WASHER 7/8"	WASH78T	1	CARBON STEEL
4	HUCK RIVET 1/4"X13/16"	A16204	1	304 SS



ISOMETRIC VIEW



REV	BY	DATE	DESCRIPTION
B	JJK	8-28-13	ADDED A16204 TO THE ASSEMBLY
A	JJK	8-20-13	RELEASED FOR PRODUCTION

UNLESS OTHERWISE SPECIFIED DIMENSIONAL TOLERANCES FRACTIONAL: ±1/16 X.XX: ±.03 X.XXX: ±.015 ANGULAR: ±1° DEBURR ALL SHARP EDGES. ALL MACHINED SURFACES TO HAVE A 125 RMS FINISH UNLESS NOTED OTHERWISE.	DRAWN BY:	JJK
	CHECKED BY:	CHL
	PROTOTYPE BY:	JJK
	PROTOTYPE DATE:	12/15/2003
THIRD ANGLE PROJECTION 	APPROVED FOR PRODUCTION BY:	JJK
	PRODUCTION DATE:	8/20/2013

PART NAME: EYEBOLT ASSEMBLY 7/8" X 6"		
MATERIAL: SEE BOM		
PROJECT #: 130813FR	SHEET #: 1 OF 1	SCALE: 1:1
DRAWING #: B36956	PART #: EB786X2A	

THIS PRINT, PROPERTY OF SALCO PRODUCTS INC., CONTAINS PROPRIETARY INFORMATION AND MUST NOT BE COPIED, REPRODUCED, OR USED DETRIMENTALLY TO OUR INTEREST.