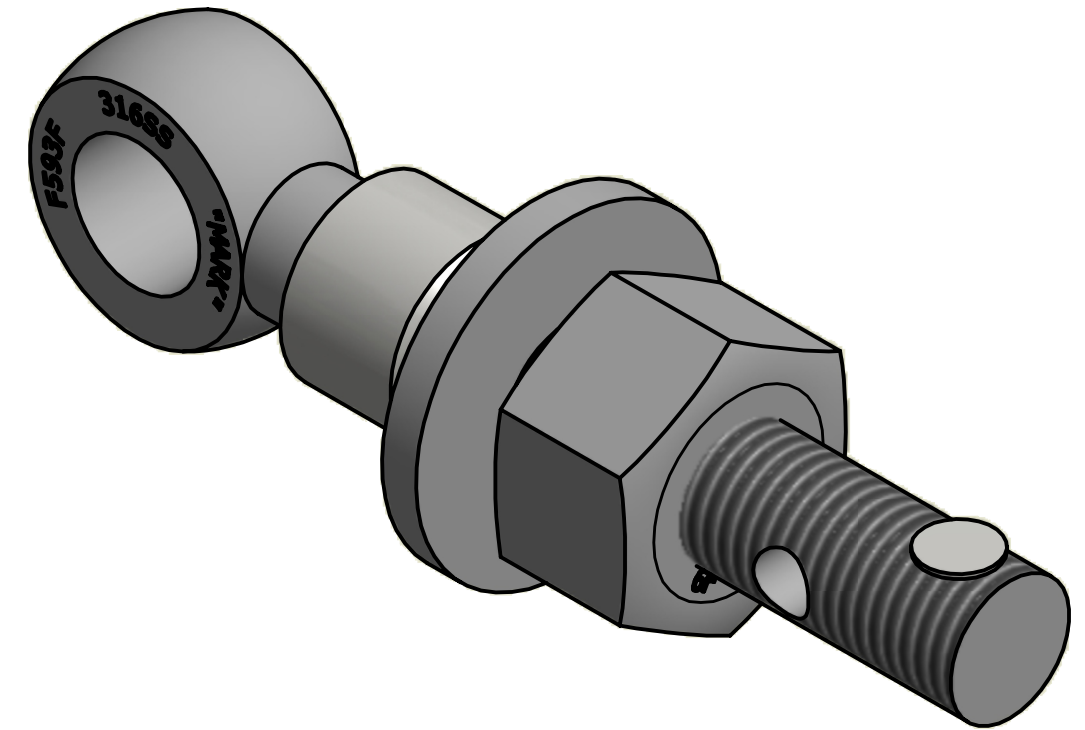
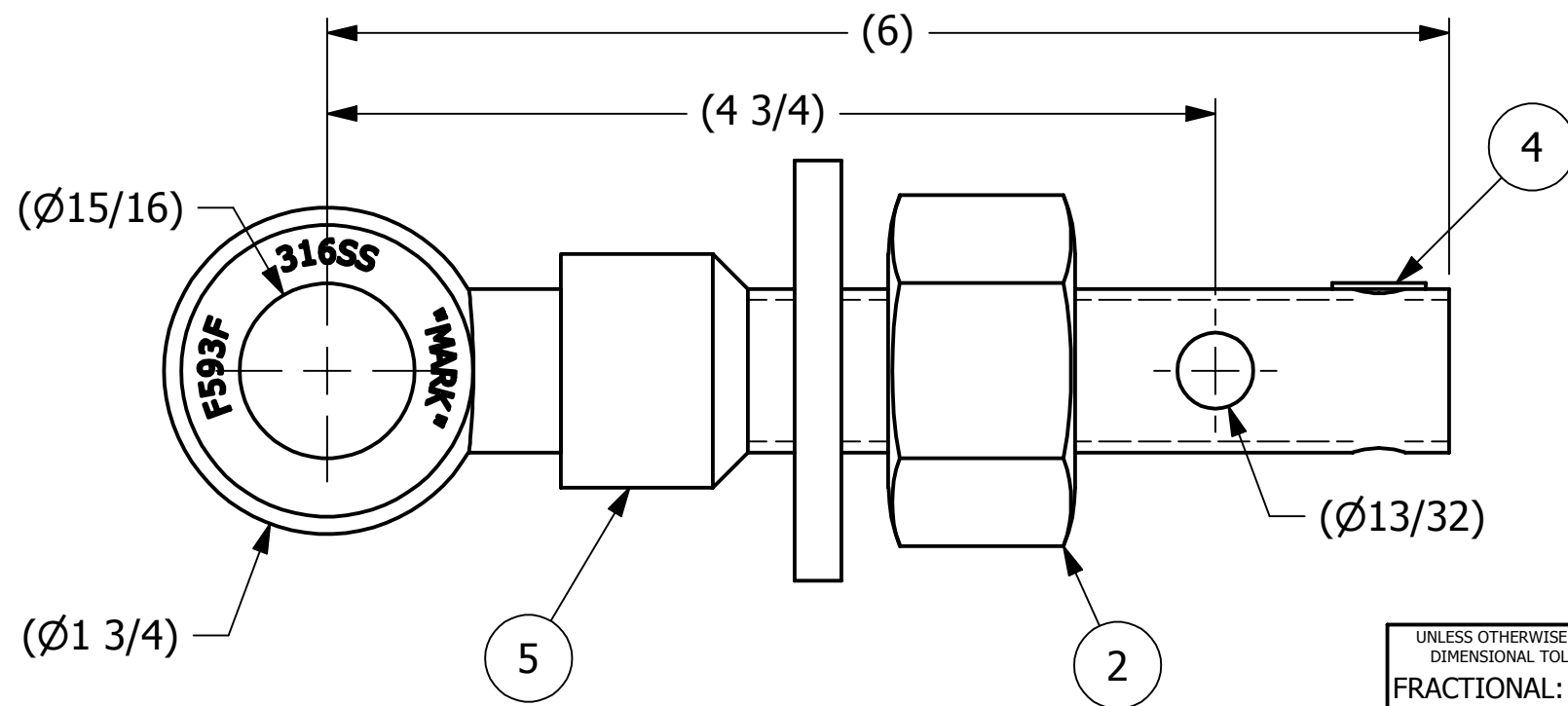


NO.	PART NAME	PART#	REQ'D	MATERIAL
1	EYEBOLT 7/8"X6"	EBR786HFTS6R	1	316 SS
2	HEAVY HEX NUT 7/8"-9	N78XS6S	1	416 SS
3	FLAT WASHER 7/8"	WASH78S4T	1	304 SS
4	HUCK RIVET 1/4"X13/16"	A16204	1	304 SS
5	EYEBOLT SAFETY COLLAR 7/8"	COLLAR78S3T3	1	303 SS



ISOMETRIC VIEW

A	WEB	6-4-13	RELEASED FOR PRODUCTION
REV	BY	DATE	DESCRIPTION

UNLESS OTHERWISE SPECIFIED DIMENSIONAL TOLERANCES FRACTIONAL: ±1/16 X.XX: ±.03 X.XXX: ±.015 ANGULAR: ±1° DEBURR ALL SHARP EDGES. ALL MACHINED SURFACES TO HAVE A 125 RMS FINISH UNLESS NOTED OTHERWISE. THIRD ANGLE PROJECTION	DRAWN BY:	WEB
	CHECKED BY:	CHL
	PROTOTYPE BY:	WEB
	PROTOTYPE DATE:	6/4/2013
	APPROVED FOR PRODUCTION BY:	CHL
	PRODUCTION DATE:	6/4/2013

SALCO PRODUCTS, INC.		
PART NAME: EYEBOLT ASSEMBLY 7/8"X6"		
MATERIAL: SEE BOM		
PROJECT #: 130604T	SHEET #: 1 OF 1	SCALE: 1:1
DRAWING #: B36462	PART #: EB786X2HFTAS6TC3	

THIS PRINT, PROPERTY OF SALCO PRODUCTS INC., CONTAINS PROPRIETARY INFORMATION AND MUST NOT BE COPIED, REPRODUCED, OR USED DETRIMENTALLY TO OUR INTEREST.