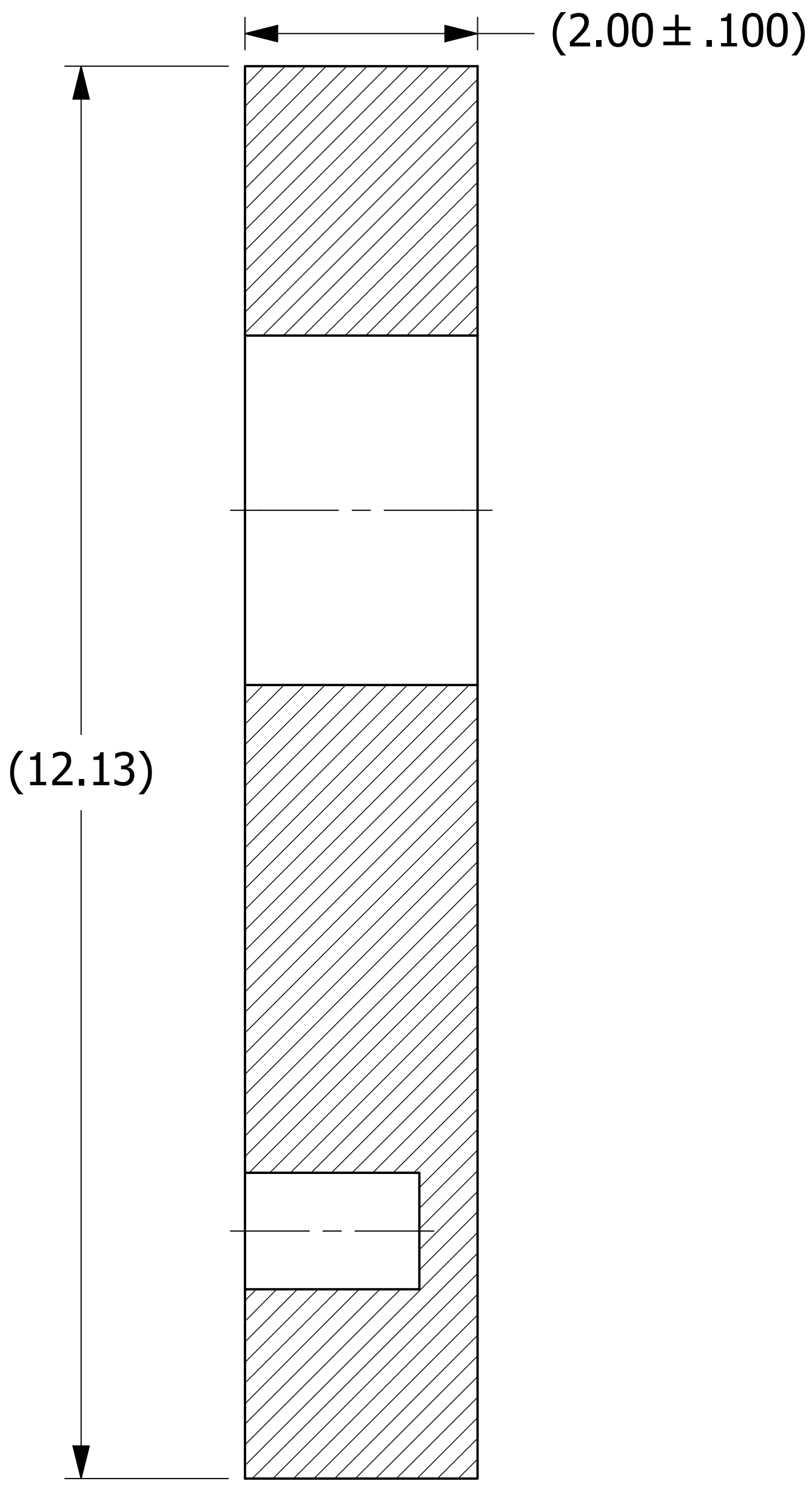


NOTES:
1. SEE DOCUMENT DSS 1 FOR MATERIAL SPECIFICATIONS.
2. MTR REQUIRED.

NO.	PART NAME	PART#	REQ'D	MATERIAL
1	SHEET 2"	SHT2UHR	.67 SQ FT	SALCO PE



SECTION A-A

UNLESS OTHERWISE SPECIFIED DIMENSIONAL TOLERANCES FRACTIONAL: ±1/16 X.XX: ±.03 X.XXX: ±.015 ANGULAR: ±1° DEBURR ALL SHARP EDGES. ALL MACHINED SURFACES TO HAVE A 125 RMS FINISH UNLESS NOTED OTHERWISE. THIRD ANGLE PROJECTION	DRAWN BY:	TAK	A TAK 4-22-14 RELEASED FOR PRODUCTION		
	CHECKED BY:	CHL	REV BY DATE DESCRIPTION		
	PROTOTYPE BY:	TAK	PART NAME: SALCO PRODUCTS, INC.		
	PROTOTYPE DATE:	3/31/2014	PARALLEL INSTRUMENT TEE BLANK 3"X1"		
APPROVED FOR PRODUCTION BY: TAK PRODUCTION DATE: 4/22/2014	MATERIAL: SEE BOM/NOTE		PROJECT #: 140312T		
			SHEET #: 1 OF 1		SCALE: 1:1
			DRAWING #: D38746 PART #: HSPIT3X1B		