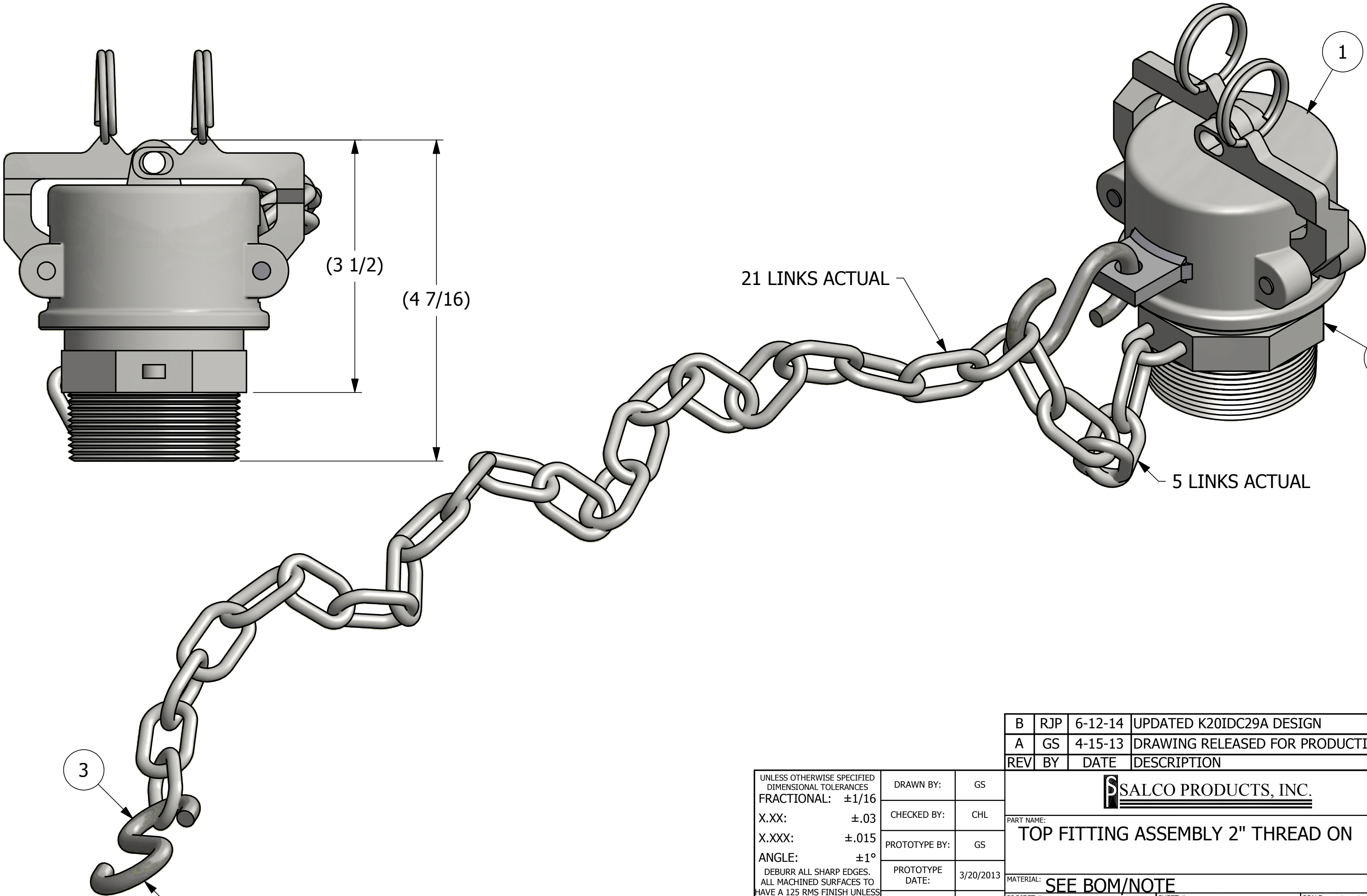


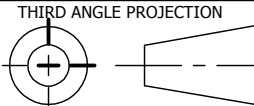
NO.	PART NAME	PART #	REQ'D	MATERIAL
1	DUST CAP 2"	K20ICDC29A	1	SEE DWG
2	QUICK CONNECT ADAPTER 2" THREAD ON	K2IMPA	1	DI
3	S-HOOK 1/4"	SC25SH	1	CS Z/P

NOTES:  
1. GASKET IS BLACK EPDM PEROXIDE CURED.  
2. SHIP S-HOOK LOOSE.



B	RJP	6-12-14	UPDATED K20IDC29A DESIGN	
A	GS	4-15-13	DRAWING RELEASED FOR PRODUCTION	
REV	BY	DATE	DESCRIPTION	
<div><div></div><div>SALCO PRODUCTS, INC.</div></div>				
PART NAME: TOP FITTING ASSEMBLY 2" THREAD ON				
MATERIAL: SEE BOM/NOTE				
PROJECT #:		SHEET #:		SCALE:
120905FR		1 OF 1		1:1
DRAWING #:		PART #:		
C35766		K20ICUMP29A		

UNLESS OTHERWISE SPECIFIED  
DIMENSIONAL TOLERANCES  
FRACTIONAL:  $\pm 1/16$   
X.XX:  $\pm .03$   
X.XXX:  $\pm .015$   
ANGLE:  $\pm 1^\circ$   
DEBURR ALL SHARP EDGES.  
ALL MACHINED SURFACES TO  
HAVE A 125 RMS FINISH UNLESS  
NOTED OTHERWISE.



DRAWN BY:	GS
CHECKED BY:	CHL
PROTOTYPE BY:	GS
PROTOTYPE DATE:	3/20/2013
APPROVED FOR PRODUCTION BY:	CHL
PRODUCTION DATE:	4/15/2013