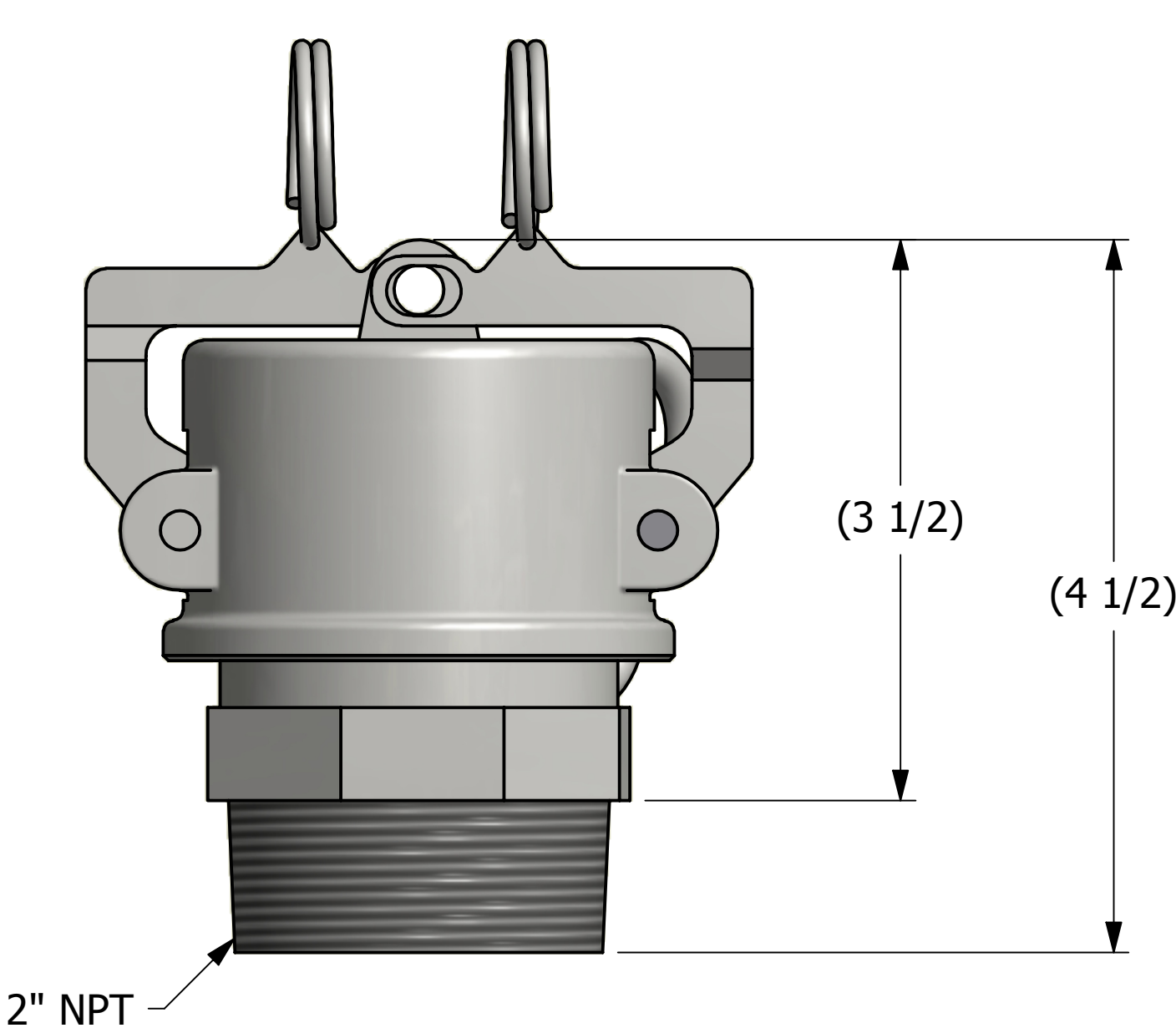
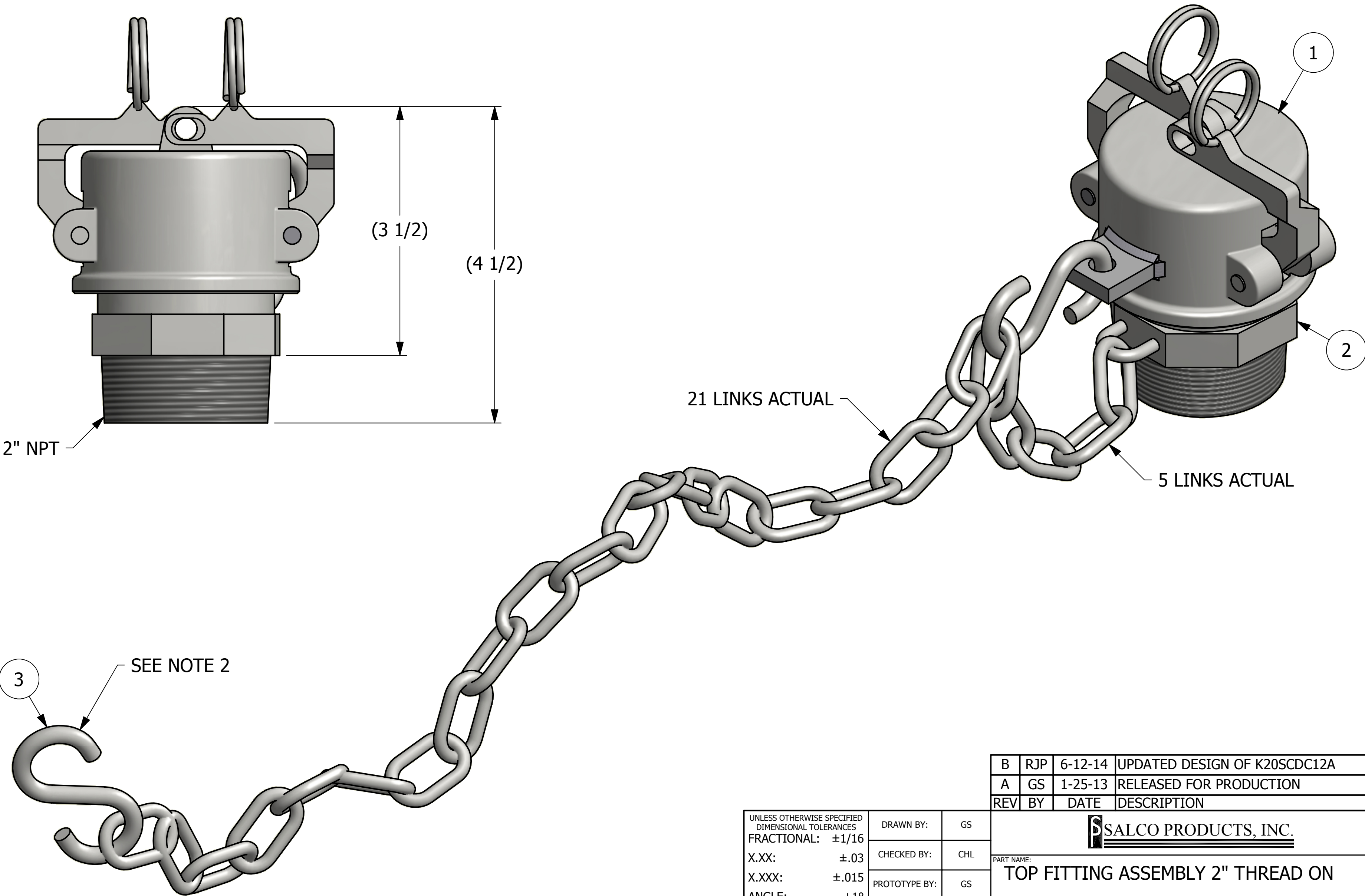


NOTES:
1. GASKET IS VITON GF-600S.
2. SHIP S-HOOK LOOSE.

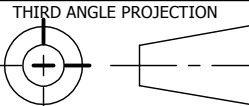
NO.	PART NAME	PART#	REQ'D	MATERIAL
1	DUST CAP ASSEMBLY 2"	K20SCDC12A	1	316 SS
2	QUICK CONNECT ADAPTER 2" THREAD ON	K2SMPA2	1	316 SS
3	S-HOOK 1/4" X 2 1/2"	SC25SHS	1	18-8 SS




21 LINKS ACTUAL



UNLESS OTHERWISE SPECIFIED
DIMENSIONAL TOLERANCES
FRACTIONAL: $\pm 1/16$
X.XX: $\pm .03$
X.XXX: $\pm .015$
ANGLE: $\pm 1^\circ$
DEBURR ALL SHARP EDGES.
ALL MACHINED SURFACES TO
HAVE A 125 RMS FINISH UNLESS
NOTED OTHERWISE.



DRAWN BY:	GS
CHECKED BY:	CHL
PROTOTYPE BY:	GS
PROTOTYPE DATE:	1/17/2013
APPROVED FOR PRODUCTION BY:	GS
PRODUCTION DATE:	1/25/2013

B	RJP	6-12-14	UPDATED DESIGN OF K20SCDC12A
A	GS	1-25-13	RELEASED FOR PRODUCTION
REV	BY	DATE	DESCRIPTION
 SALCO PRODUCTS, INC.			
PART NAME: TOP FITTING ASSEMBLY 2" THREAD ON			
MATERIAL: SEE BOM/NOTE			
PROJECT #: 120905FR		SHEET #: 1 OF 1	SCALE: 1:1
DRAWING #: C35155		PART #: K20SCUMP12A	