

NO.	PART NAME	PART#	REQ'D	MATERIAL
1	SPRING 21/32"X2"	A38818	1	18-8 SS
2	STICKER	A41924	1	VINYL
3	ANGLE IRON 1 1/4" X 1 1/4" X 1/4"	B31012	2	CS
4	BOV ADAPTER APOLLO	B38269	1	CS
5	LOCKING BRACKET	B38921	1	304 SS
6	ANGLE 3" X 3" X 3/8"	B39133	1	CS
7	HANDLE EXTENSION ASSEMBLY	BOVHELCS01	1	CS
8	SAFEGUARD™ BOV DECAL	DBOV2224V02	1	VINYL
9	SPRING PIN 5/16" X 2"	SP74343	1	18-8 SS
10	TAG	TAGSS3	1	304 SS

IMPORTANT

SAFEGUARD™ BOTTOM OUTLET VALVE OPERATING INSTRUCTIONS

TO OPEN, REMOVE SEAL PINS, PUSH THE HANDLE INWARDS WHILE STILL IN CLOSED POSITION AND ROTATE COUNTER CLOCKWISE.

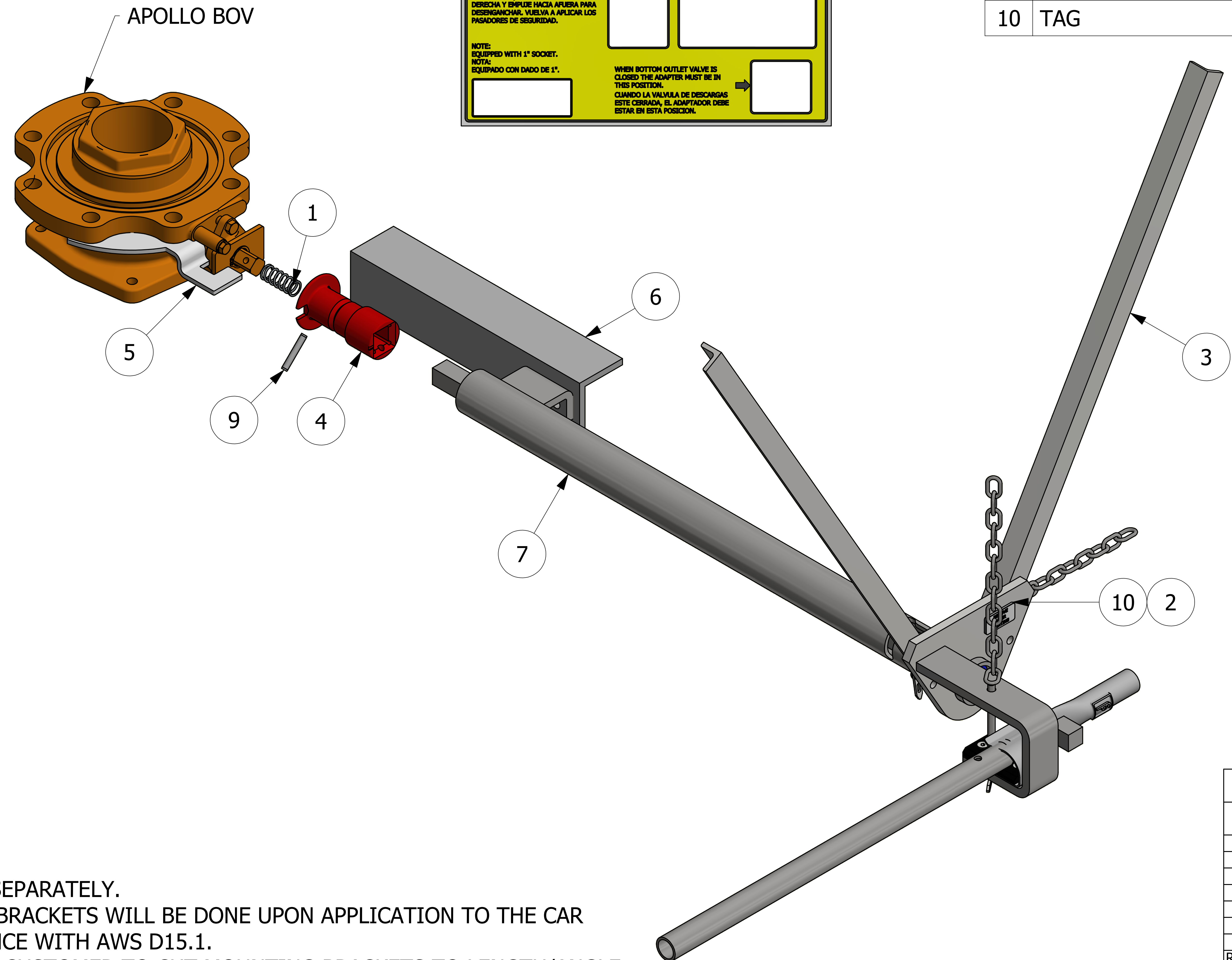
PARA ABRIR, REMUEVA LOS PASADORES DE SEGURIDAD, EMPUJE LA MANEJA HACIA ADENTRO CUANDO AUN ESTE EN LA POSICION DE CIERRE Y GIRE HACIA LA IZQUIERDA.

TO CLOSE, ROTATE THE HANDLE CLOCKWISE AND PULL OUTWARD TO DISENGAGE. REAPPLY SEAL PINS.

PARA CERRAR, GIRE LA MANEJA HACIA LA DERECHA Y DESPLUZE HACIA AFUERA PARA DESGANCHAR, VUELVA A APLICAR LOS PASADORES DE SEGURIDAD.

NOTE: EQUIPPED WITH 1" SOCKET.
NOTA: EQUIPADO CON DADO DE 1".

WHEN BOTTOM OUTLET VALVE IS CLOSED THE ADAPTER MUST BE IN THIS POSITION.
CUANDO LA VALVULA DE DESCARGAS ESTE CERRADA, EL ADAPTADOR DEBE ESTAR EN ESTA POSICION.



- NOTES:**
1. VALVE SOLD SEPARATELY.
 2. WELDING OF BRACKETS WILL BE DONE UPON APPLICATION TO THE CAR IN ACCORDANCE WITH AWS D15.1.
 3. IF REQUIRED, CUSTOMER TO CUT MOUNTING BRACKETS TO LENGTH/ANGLE UPON APPLICATION TO THE CAR.
 4. WELD TAGSS3 PER DSS 12 WELDING SPECIFICATIONS.
 5. ENGRAVE TAGSS3 WITH "SAFEGUARD™" "A01" AND DATE "**/*/*" (MONTH/YEAR). TEXT HEIGHT 1/4" MIN.
 6. APPLY A41924 TO TAGSS3 AFTER IT HAS BEEN WELDED ON.
 7. PATENT PENDING.

REV	BY	DATE	DESCRIPTION
I	WEB	4-6-18	ADDED TAG PLACEMENT DIMENSIONS, ADDED 1/8 TO TAG WELD, SORTED BOM, UPDATED WELD NOTES
H	WEB	5-23-17	ADDED NOTE TO DETAIL D, ADDED "SAFEGUARD™" TO NOTE 5 AND UPDATED PART NAME
G	RJP	9-8-15	REMOVED C39211, ADDED TAGSS3 & A41924
F	RJP	11-3-14	ADDED SECTION B-B & C-C
E	RJP	9-24-14	UPDATED GEOMETRY OF B38269
D	WEB	9-9-14	ADDED C39211
C	WEB	8-22-14	REMOVED BOVHF02
B	JG	7-31-14	ADDED DBOV2224V02 TO BOM
A	RJP	7-22-14	RELEASED FOR PRODUCTION

UNLESS OTHERWISE SPECIFIED DIMENSIONAL TOLERANCES FRACTIONAL: ±1/16	DRAWN BY:	JJK
X.XX: ±.03	CHECKED BY:	VD
X.XXX: ±.015	PROTOTYPE BY:	JJK
ANGULAR: ±1°	PROTOTYPE DATE:	2/3/2014
DEBURR ALL SHARP EDGES. ALL MACHINED SURFACES TO HAVE A 125 RMS FINISH UNLESS NOTED OTHERWISE.	APPROVED FOR PRODUCTION BY:	CHL
THIRD ANGLE PROJECTION	PRODUCTION DATE:	7/22/2014

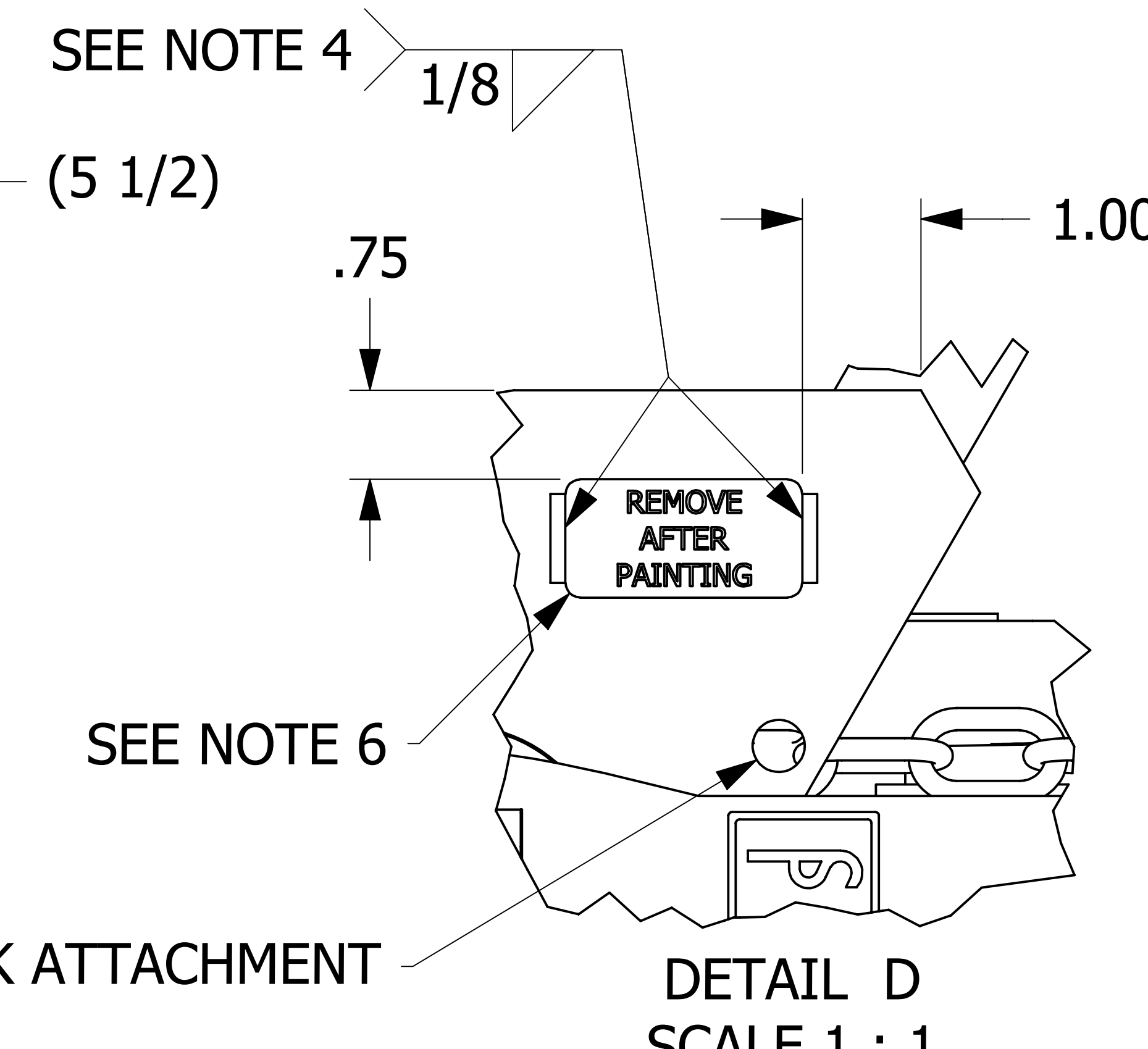
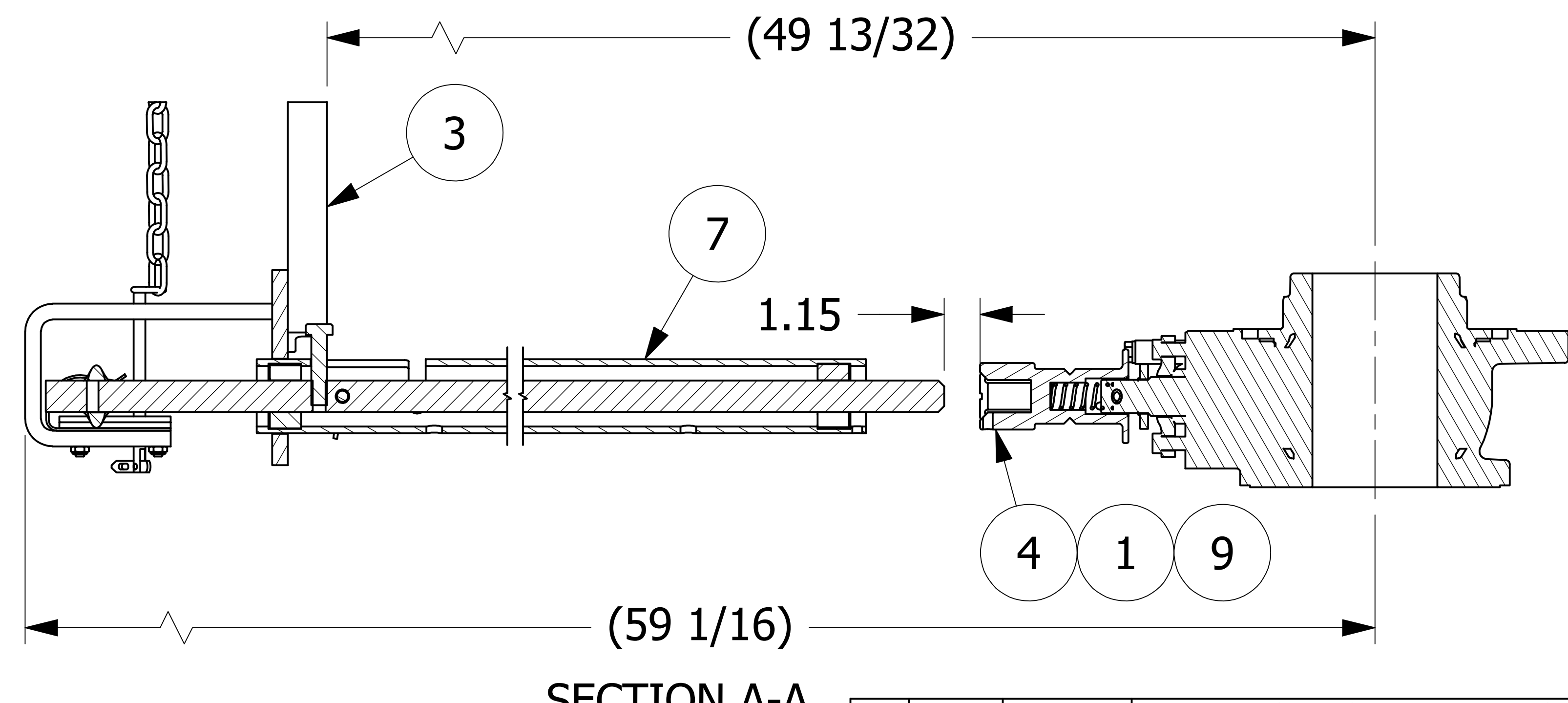
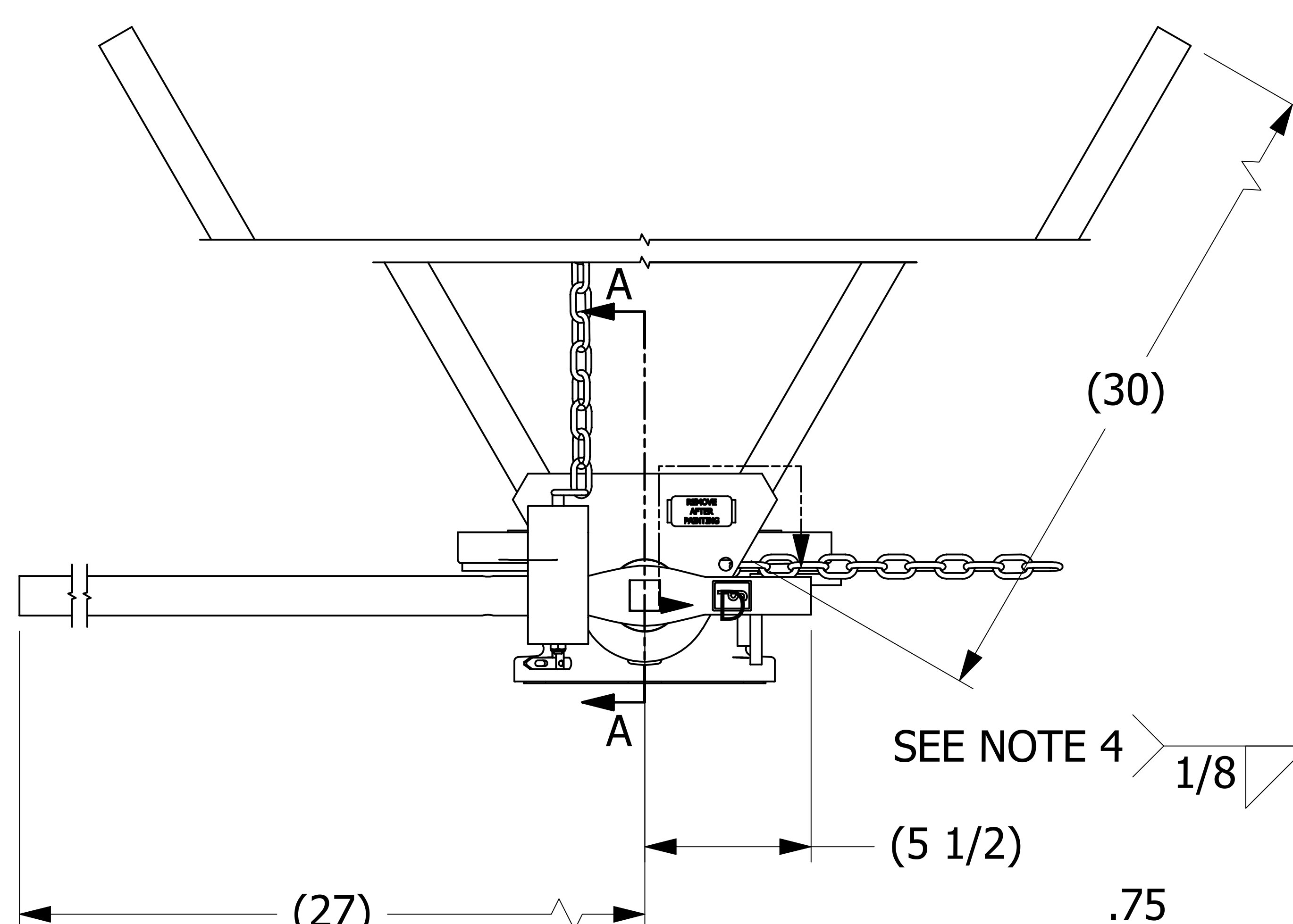
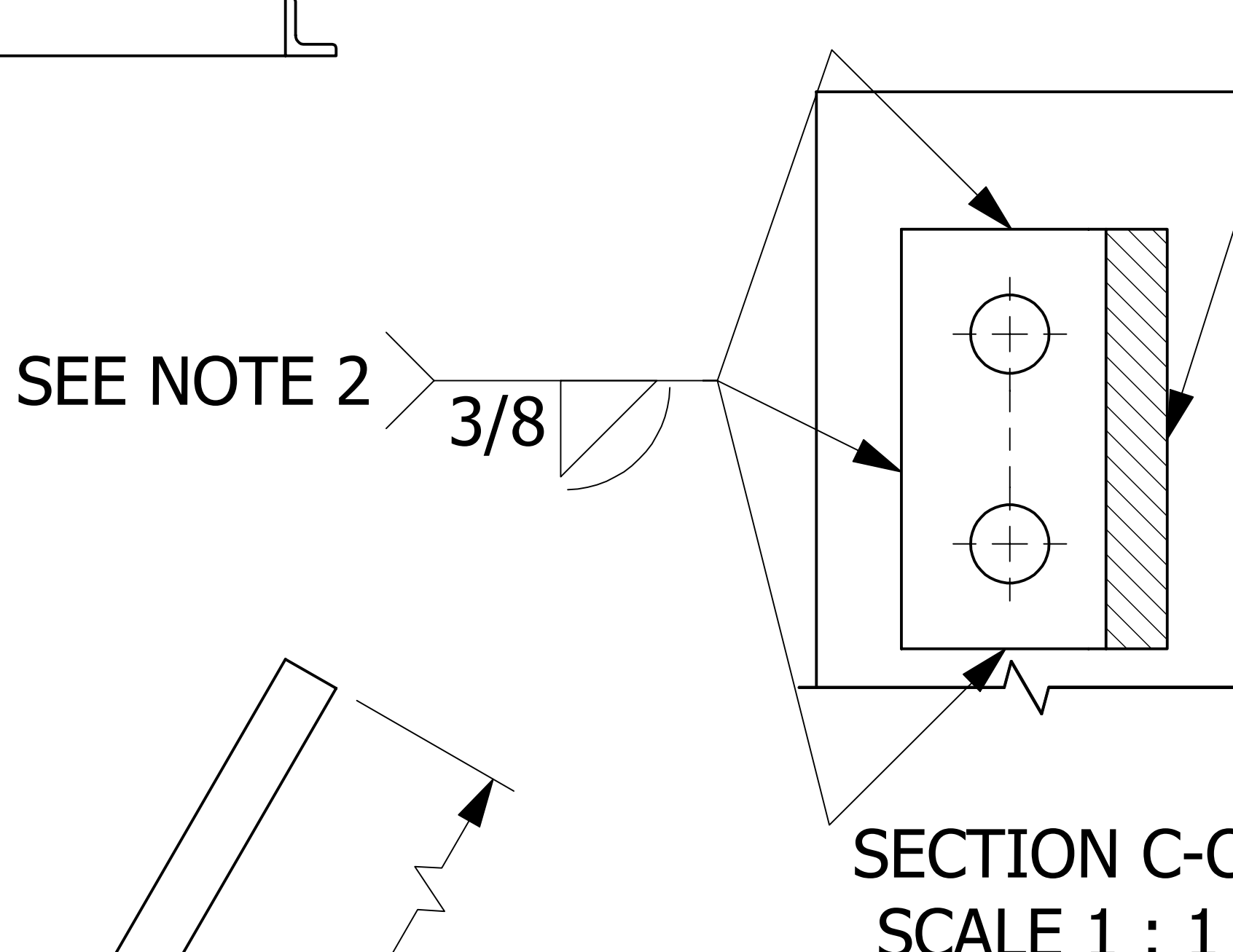
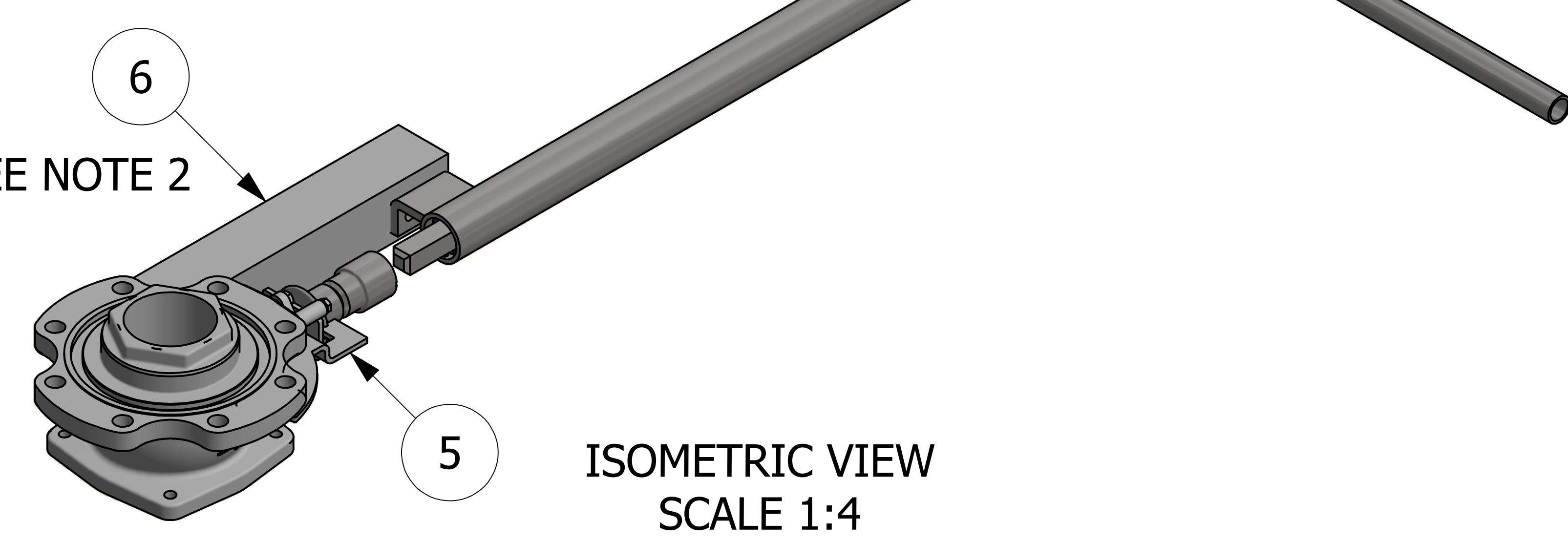
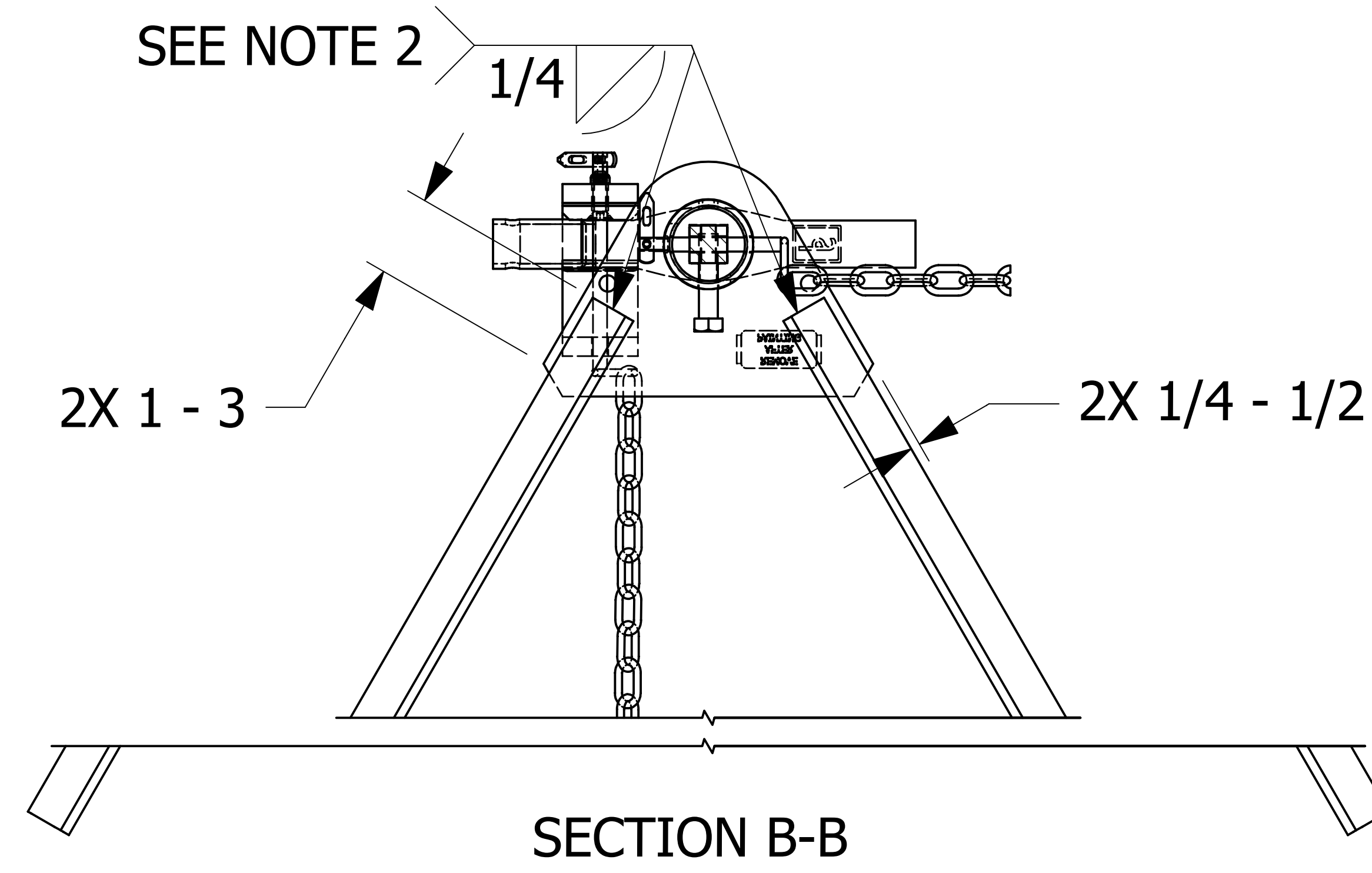
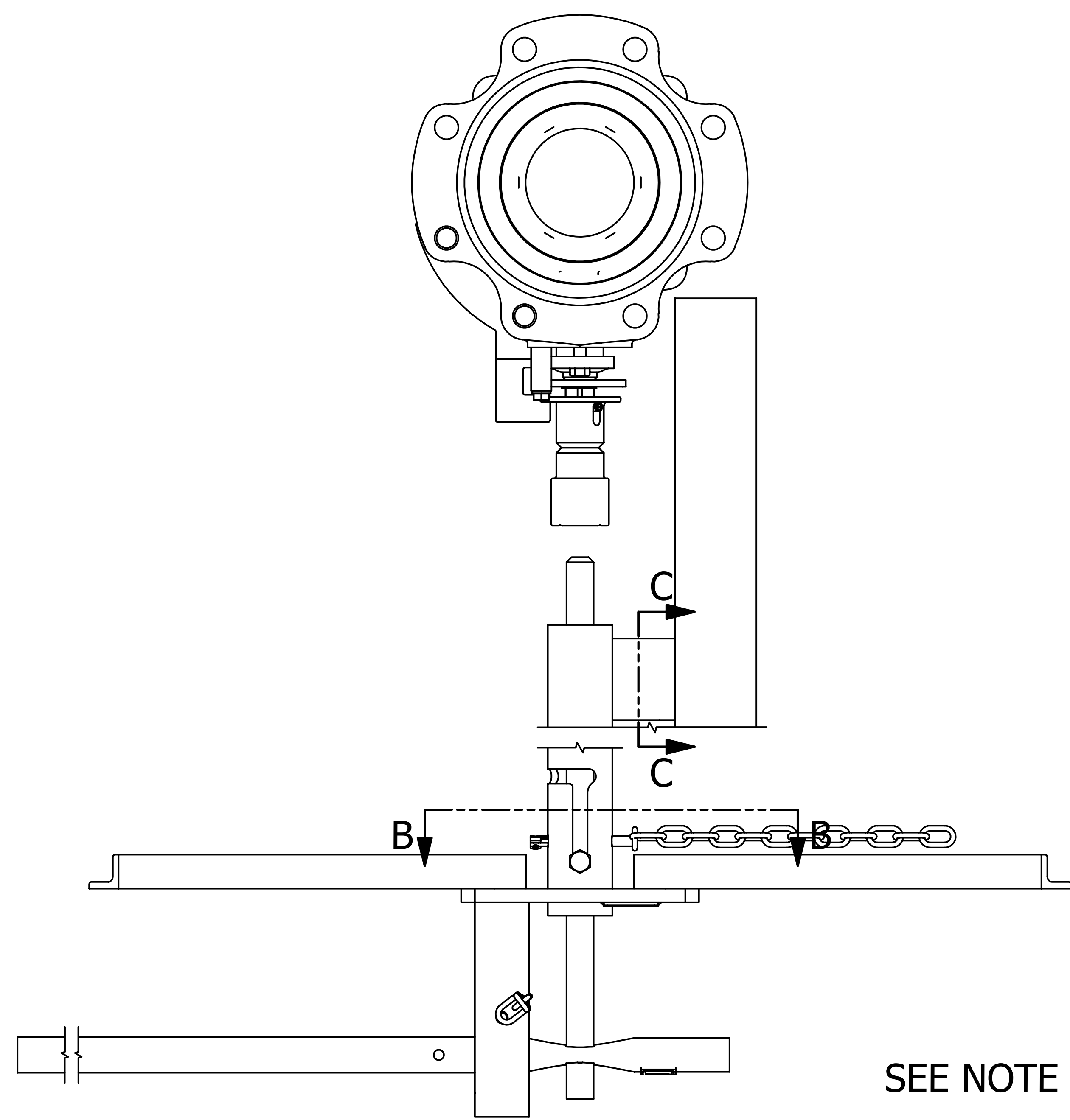
SALCO PRODUCTS, INC.

SAFEGUARD™ BOV OPERATING SYSTEM

SEE BOM

PROJECT #: 140114T SHEET #: 1 OF 2 SCALE: 1:3

DRAWING #: **E38507** PART #: **BOVHKITCSA01**



Ø7/16" HOLE FOR CHAIN LINK ATTACHMENT

I	WEB	4-6-18	ADDED TAG PLACEMENT DIMENSIONS, ADDED 1/8 TO TAG WELD, SORTED BOM, UPDATED WELD NOTES
H	WEB	5-23-17	ADDED NOTE TO DETAIL D, ADDED "SAFEGUARD™" TO NOTE 5 AND UPDATED PART NAME
G	RJP	9-8-15	REMOVED C39211, ADDED TAGSS3 & A41924
F	RJP	11-3-14	ADDED SECTION B-B & C-C
E	RJP	9-24-14	UPDATED GEOMETRY OF B38269
D	WEB	9-9-14	ADDED C39211
C	WEB	8-22-14	REMOVED BOVHF02
B	JG	7-31-14	ADDED DBOV2224V02 TO BOM
A	RJP	7-22-14	RELEASED FOR PRODUCTION
REV	BY	DATE	DESCRIPTION

UNLESS OTHERWISE SPECIFIED DIMENSIONAL TOLERANCES FRACTIONAL: ±1/16 X.XX: ±.03 X.XXX: ±.015 ANGULAR: ±1° DEBURR ALL SHARP EDGES. ALL MACHINED SURFACES TO HAVE A 125 RMS FINISH UNLESS NOTED OTHERWISE. THIRD ANGLE PROJECTION	DRAWN BY: JJK CHECKED BY: VD PROTOTYPE BY: JJK PROTOTYPE DATE: 2/3/2014 APPROVED FOR PRODUCTION BY: CHL PRODUCTION DATE: 7/22/2014
--	---

SALCO PRODUCTS, INC.

SAFEGUARD™ BOV OPERATING SYSTEM

MATERIAL: **SEE BOM**

PROJECT #: **140114T** SHEET #: **2 OF 2** SCALE: **1:3**

DRAWING #: **E38507** PART #: **BOVHKITCSA01**