

NO.	PART NAME	PART#	REQ'D	MATERIAL
1	BOV ADAPTER JAMESBURY	B39388	1	CS
2	SPRING 21/32"X2"	A38818	1	18-8 SS
3	SPRING PIN 5/16" X 2"	SP74343	1	18-8 SS
4	HANDLE EXTENSION ASSEMBLY	BOVHECS04	1	SEE DWG
5	SLIDING BRACKET ASSEMBLY	D41714	1	CS
6	LOCKING BRACKET	A41748	1	CS
7	SAFEGUARD™ BOV DECAL	DBOV2224V01	1	VINYL
8	ADAPTER SHIELDING BRACKET	C41766	1	CS
9	HEX BOLT 1/2"-13 X 3"	TB1113824	3	CS Z/P
10	HEX BOLT 1/2-13 X 1 1/2"	HB13209	1	CS Z/P
11	HEX BOLT 5/8"-11X1 3/4"	HB13310	2	CS, Z/P
12	SPACER 3/16"	A41700	1	CS
13	HEX BOLT 3/8"-16 X 1 1/2"	HB13109	2	CS, Z/P
14	TOP LOCK NUT 1/2"-13	LN70800	4	18-8 SS
15	TOP LOCK NUT 3/8"-16	LN77798	2	316 SS
16	TOP LOCK NUT, 5/8"-11	LN77802	2	316 SS
17	HEX BOLT 1/2"-13 X 2-1/2"	TB1113823	3	CS Z/P
18	SPACER 1/4"	A41699	5	CS
19	SPACER 1/8"	A41701	2	CS
20	SPACER 1/2"	A41847	3	CS
21	TAG	TAGSS3	1	304 SS
22	STICKER	A41924	1	VINYL

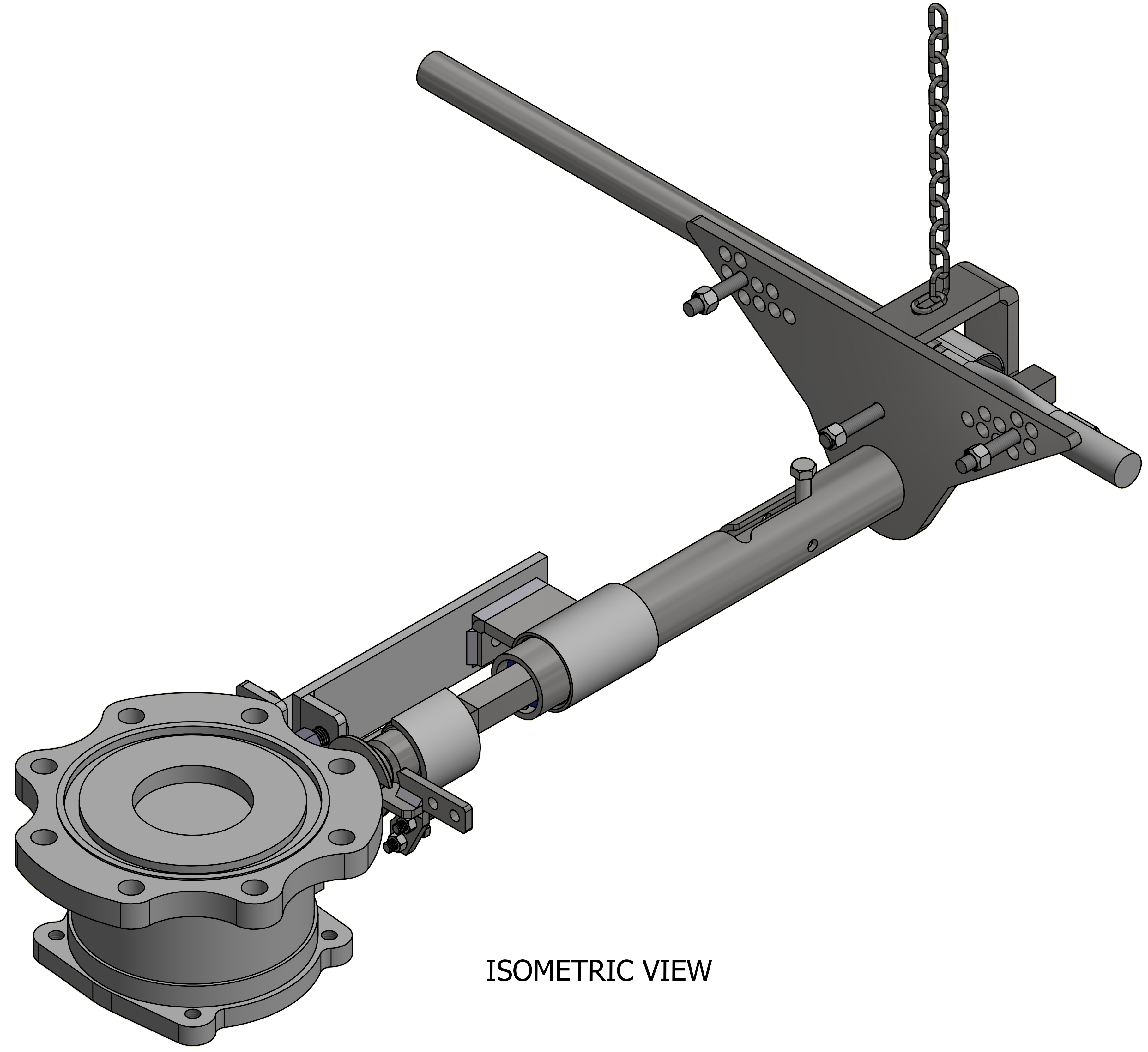
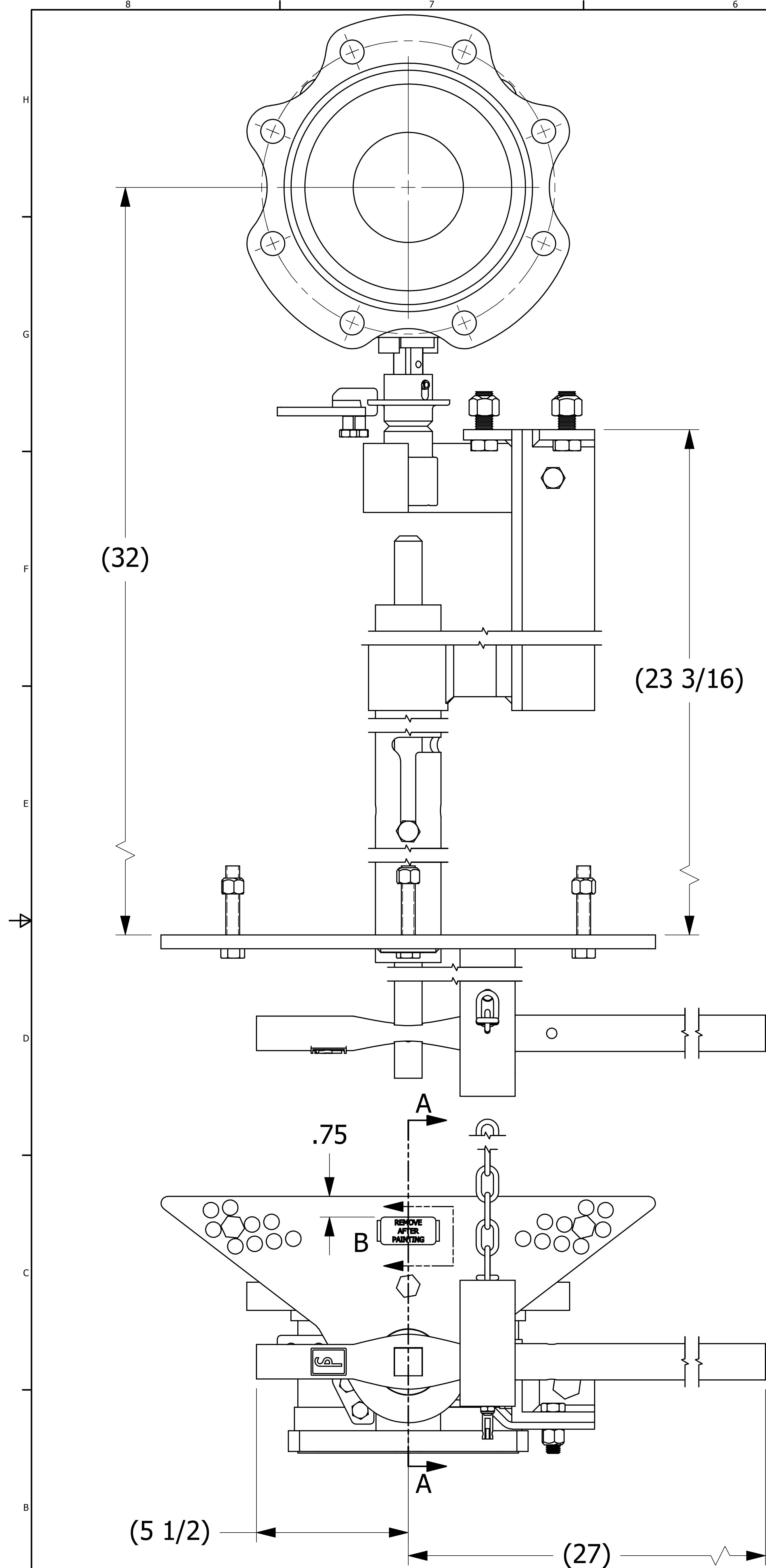
- NOTES:
1. VALVE SOLD SEPARATELY.
  2. SEE DOCUMENT DSS 12 FOR WELDING SPECIFICATIONS.
  3. ENGRAVE TAGSS3 WITH "SAFEGUARD™", "J03" AND DATE "\*\*/\*\*" (MONTH/YEAR). TEXT HEIGHT 1/4" MIN.
  4. APPLY A41924 TO TAGSS3 AFTER IT HAS BEEN WELDED ON.
  5. PATENT PENDING.

F	WEB	3-29-18	ADDED TAG PLACEMENT DIMENSION, ADDED 1/8 TO TAG WELD
E	WEB	5-24-17	ADDED SAFEGUARD™ TO NOTE 3, UPDATED PART NAME, ADDED DSS 12 NOTE
D	RJP	11-9-15	UPDATED BOVHECS04 GEOMETRY
C	WEB	1-28-16	UPDATED VIEWS PER CHANGES TO A41748
B	RJP	11-9-15	UPDATED BOVHECS04 GEOMETRY
A	RJP	11-6-15	RELEASED FOR PRODUCTION
REV	BY	DATE	DESCRIPTION

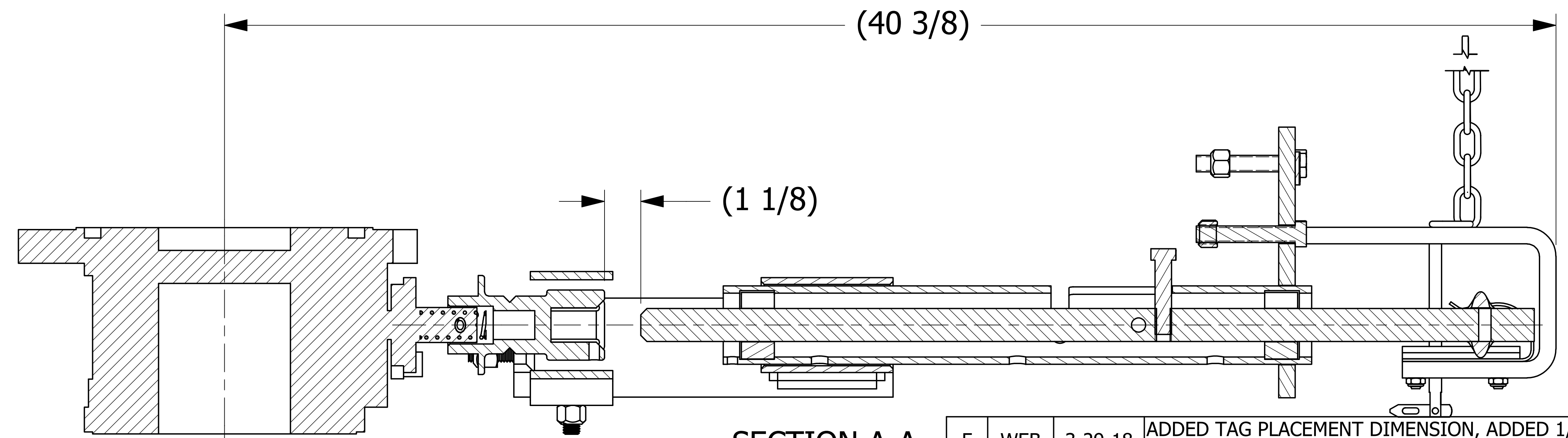
UNLESS OTHERWISE SPECIFIED DIMENSIONAL TOLERANCES FRACTIONAL: ±1/16 X.XX: ±.03 X.XXX: ±.015 ANGULAR: ±1° DEBURR ALL SHARP EDGES. ALL MACHINED SURFACES TO HAVE A 125 RMS FINISH UNLESS NOTED OTHERWISE.	DRAWN BY: EJF
THIRD ANGLE PROJECTION	CHECKED BY: WRB
	PROTOTYPE BY: EJF
	PROTOTYPE DATE: 6/18/2015
	APPROVED FOR PRODUCTION BY: WRB
	PRODUCTION DATE: 11/6/2015

SALCO PRODUCTS, INC.		
PART NAME: BOLT-ON SAFEGUARD™ BOV OPERATING SYSTEM		
MATERIAL: SEE BOM		
PROJECT #: R150522	SHEET #: 1 OF 2	SCALE: 1:2
DRAWING #: E41716	PART #: BOVHKITCSJ03	

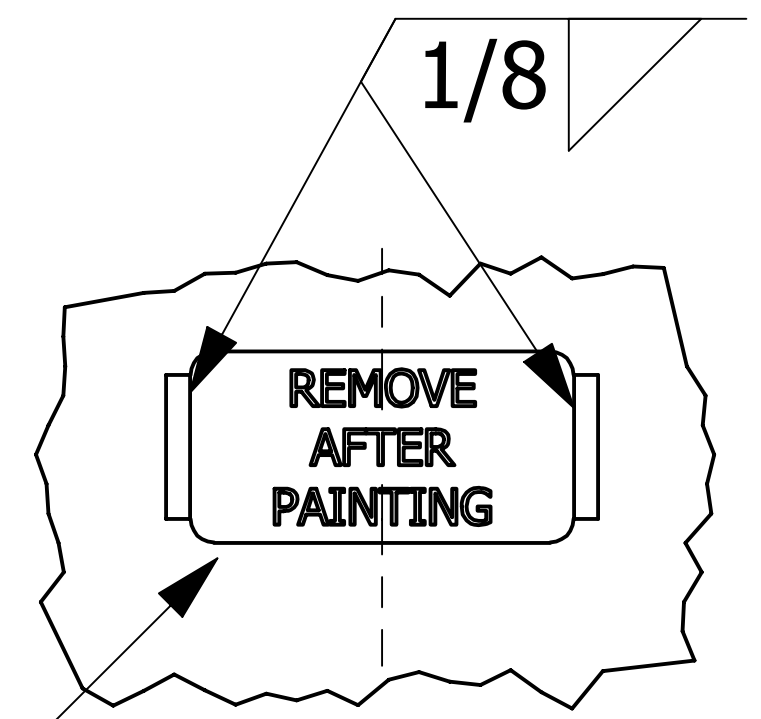




ISOMETRIC VIEW



SECTION A-A



SEE NOTE 4  
DETAIL B  
SCALE 1 : 1

F	WEB	3-29-18	ADDED TAG PLACEMENT DIMENSION, ADDED 1/8 TO TAG WELD
E	WEB	5-24-17	ADDED SAFEGUARD™ TO NOTE 3, UPDATED PART NAME, ADDED DSS 12 NOTE
D	RJP	11-9-15	UPDATED BOVHECS04 GEOMETRY
C	WEB	1-28-16	UPDATED VIEWS PER CHANGES TO A41748
B	RJP	11-9-15	UPDATED BOVHECS04 GEOMETRY
A	RJP	11-6-15	RELEASED FOR PRODUCTION
REV	BY	DATE	DESCRIPTION

UNLESS OTHERWISE SPECIFIED DIMENSIONAL TOLERANCES FRACTIONAL: ±1/16 X.XX: ±.03 X.XXX: ±.015 ANGULAR: ±1° DEBURR ALL SHARP EDGES. ALL MACHINED SURFACES TO HAVE A 125 RMS FINISH UNLESS NOTED OTHERWISE.	DRAWN BY: EJF	CHECKED BY: WRB	PROTOTYPE BY: EJF	PROTOTYPE DATE: 6/18/2015	APPROVED FOR PRODUCTION BY: WRB	PRODUCTION DATE: 11/6/2015
THIRD ANGLE PROJECTION						



**SALCO PRODUCTS, INC.**

PART NAME:  
**BOLT-ON SAFEGUARD™ BOV OPERATING SYSTEM**

MATERIAL:  
**SEE BOM**

PROJECT #:  
**R150522**

SHEET #:  
**2 OF 2**

SCALE:  
**1:2**

DRAWING #:  
**E41716**

PART #:  
**BOVHKITCSJ03**