

NO	PART NAME	PART#	REQ'D	MATERIAL
1	SPRING 21/32"X2"	A38818	1	18-8 SS
2	ADAPTER LOCKING BRACKET	A41713	1	CS
3	STICKER	A41924	1	VINYL
4	ANGLE IRON 1 1/4" X 1 1/4" X 1/4"	B31012	2	CS
5	ANGLE 3" X 3" X 3/8"	B39133	1	CS
6	BOV ADAPTER JAMESBURY	B39388	1	CS
7	HANDLE EXTENSION ASSEMBLY	BOVHECS03	1	CS/SS
8	SAFEGUARD™ BOV DECAL	DBOV2224V01	1	VINYL
9	SPRING PIN 5/16" X 2"	SP74343	1	18-8 SS
10	TAG	TAGSS3	1	304 SS

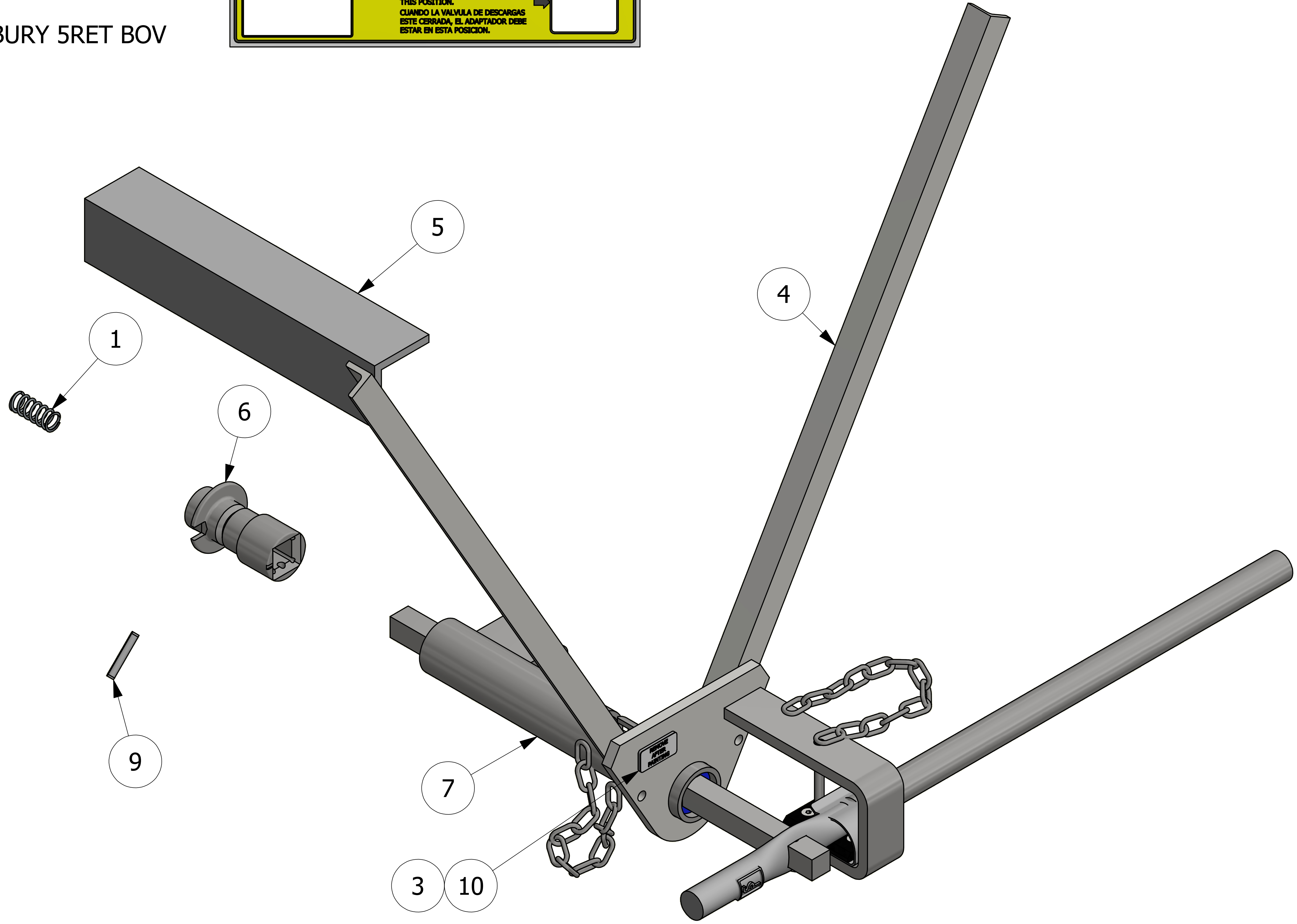
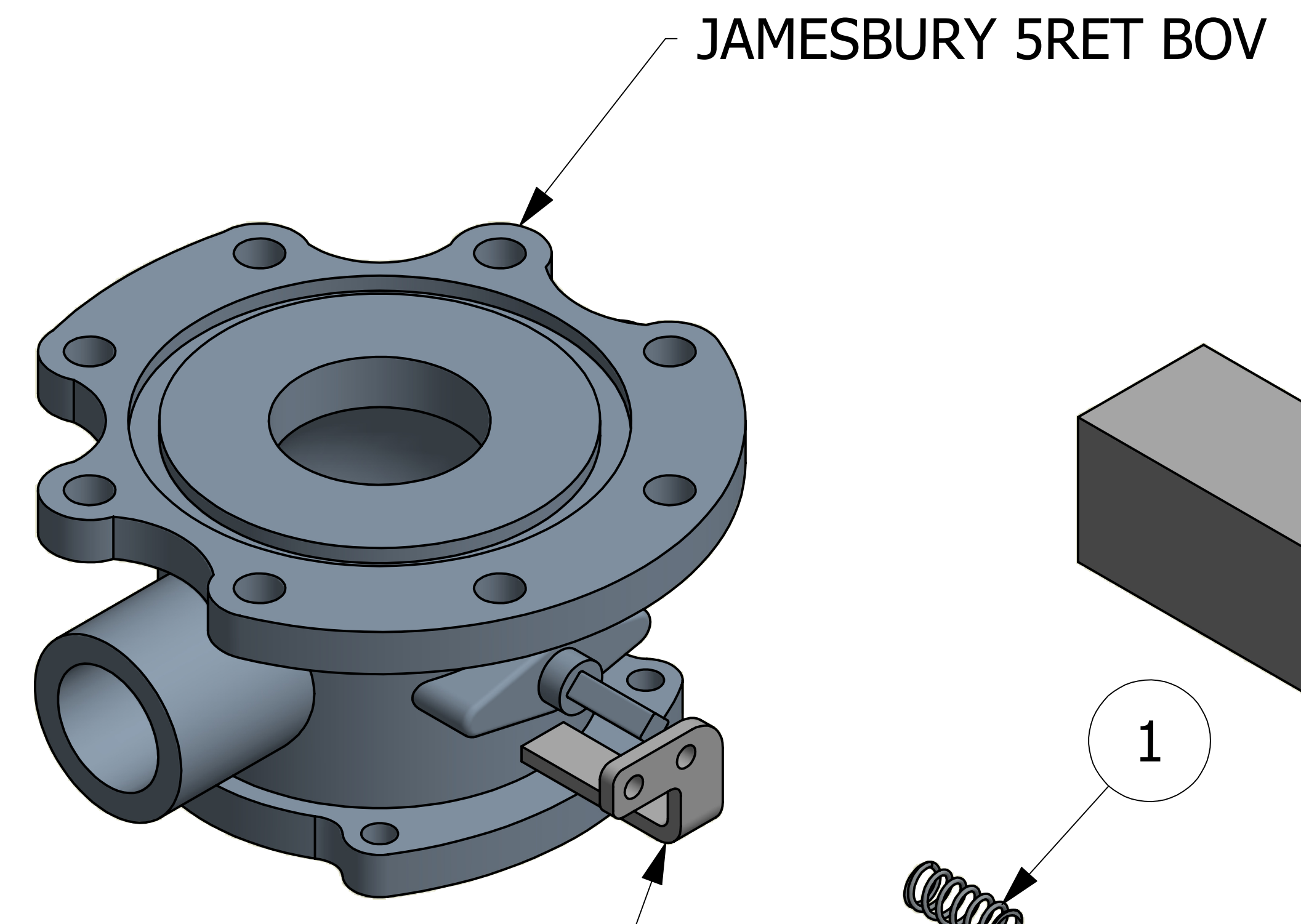
IMPORTANT
SAFEGUARD™ BOTTOM OUTLET
VALVE OPERATING INSTRUCTIONS

TO OPEN, REMOVE SEAL PINS, PUSH THE HANDLE INWARDS WHILE STILL IN CLOSED POSITION AND ROTATE CLOCKWISE.
PARA ABRIR, REMUEVA LOS PASADORES DE SEGURIDAD, EMPUJE LA MANEJA HACIA ADETRÁS CUANDO AUN ESTE EN LA POSICIÓN DE CIERRE Y GIRE HACIA LA DERECHA.

TO CLOSE, ROTATE THE HANDLE COUNTER CLOCKWISE AND PULL OUTWARD TO DESENGAGE, REAPPLY SEAL PINS.
PARA CERRAR, GIRE LA MANEJA HACIA LA IZQUIERDA Y EMPUJE HACIA AFUERA PARA DESenganchar. VUELVA A APLICAR LOS PASADORES DE SEGURIDAD.

NOTE:
EQUIPPED WITH 1" SOCKET.
NOTA:
EQUIPADO CON DADO DE 1".

WHEN BOTTOM OUTLET VALVE IS CLOSED THE ADAPTER MUST BE IN THIS POSITION.
CUANDO LA VALVULA DE DESCARGAS ESTE CERRADA, EL ADAPTADOR DEBE ESTAR EN ESTA POSICION.



NOTES:

1. VALVE SOLD SEPARATELY.
2. WELDING OF BRACKETS WILL BE DONE UPON APPLICATION TO THE CAR IN ACCORDANCE WITH AWS D15.1.
3. IF REQUIRED, CUSTOMER TO CUT MOUNTING BRACKETS TO LENGTH/ANGLE UPON APPLICATION TO THE CAR.
4. ENGRAVE TAGSS3 WITH "SAFEGUARD™", "J10B" AND DATE "***/**" (MONTH/YEAR). TEXT HEIGHT 1/4" MIN.
5. WELD TAGSS3 PER DSS 12 WELDING SPECIFICATIONS.
6. APPLY A41924 TO TAGSS3 AFTER IT HAS BEEN WELDED ON.
7. PATENT PENDING.

B	WEB	4-9-18	ADDED TAG PLACEMENT DIMENSIONS, ADDED 1/8 TO TAG WELD, UPDATED WELD NOTES
A	WEB	7-31-17	RELEASED FOR PRODUCTION
REV	BY	DATE	DESCRIPTION

UNLESS OTHERWISE SPECIFIED DIMENSIONAL TOLERANCES FRACTIONAL: ±1/16	DRAWN BY:	WEB
X.XX: ±.03	CHECKED BY:	EJF
X.XXX: ±.015	PROTOTYPE BY:	WEB
ANGULAR: ±1°	PROTOTYPE DATE:	6/20/2017
DEBURR ALL SHARP EDGES. ALL MACHINED SURFACES TO HAVE A 125 RMS FINISH UNLESS NOTED OTHERWISE.	APPROVED FOR PRODUCTION BY:	EJF
THIRD ANGLE PROJECTION	PRODUCTION DATE:	7/31/2017

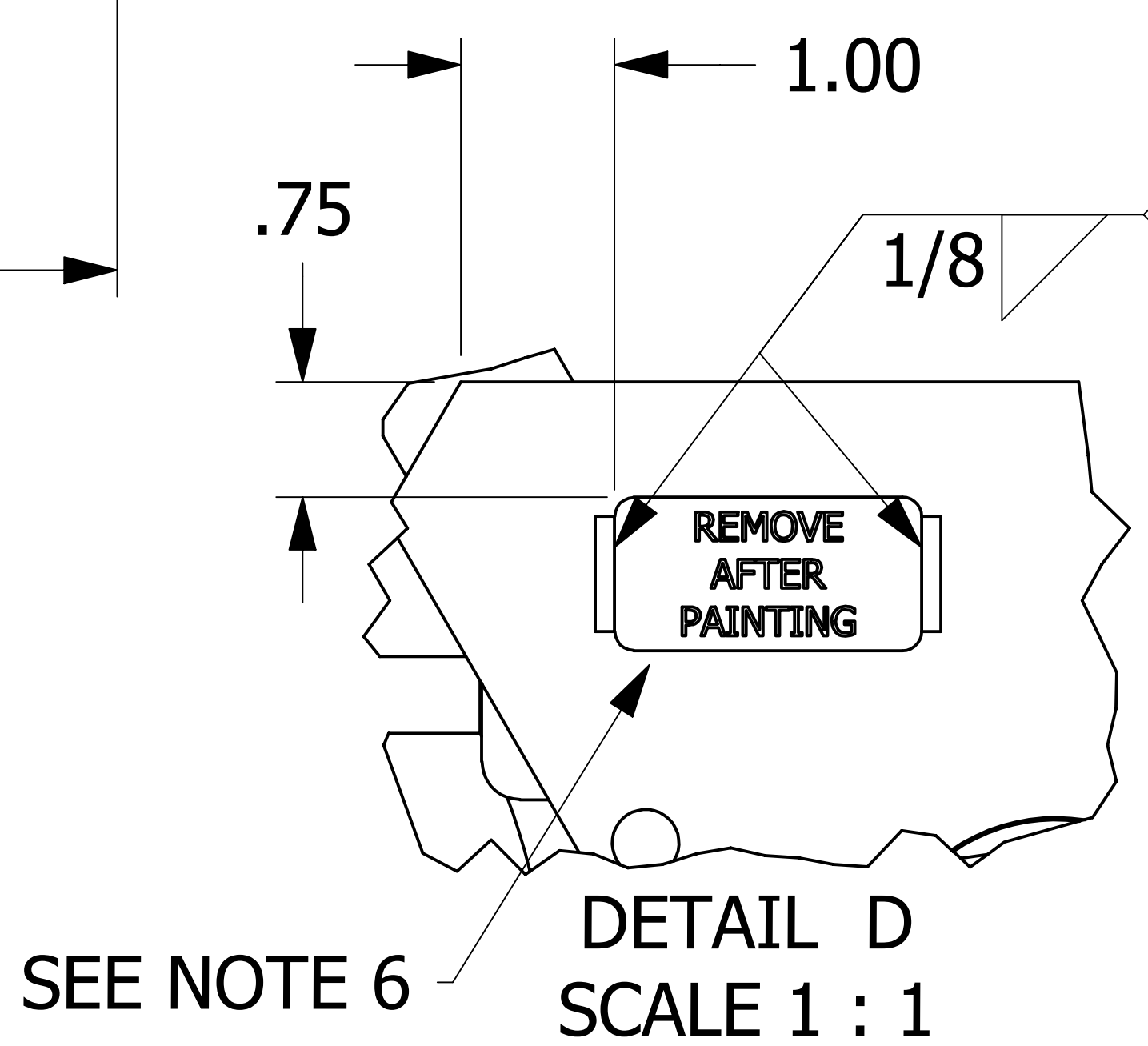
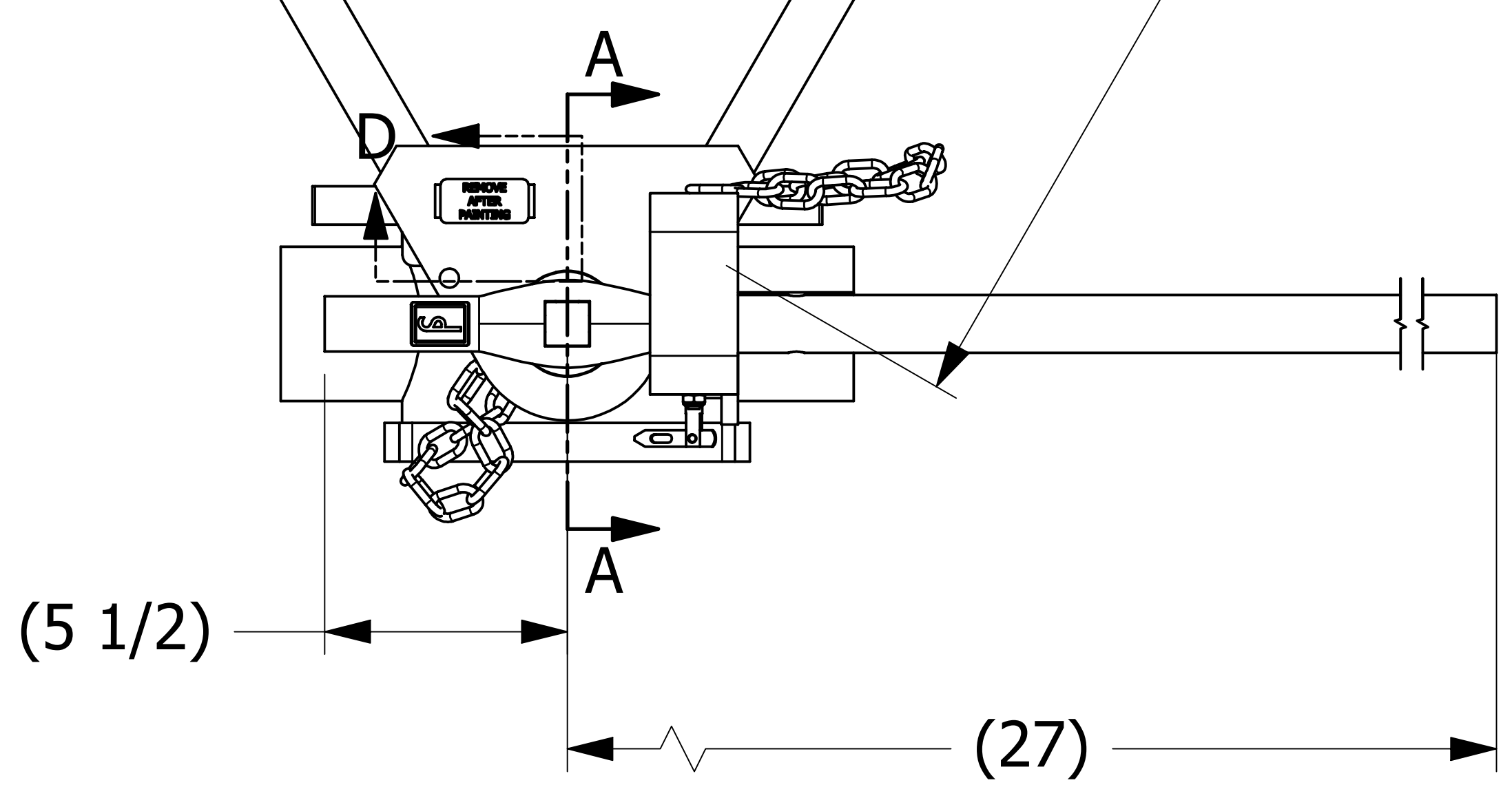
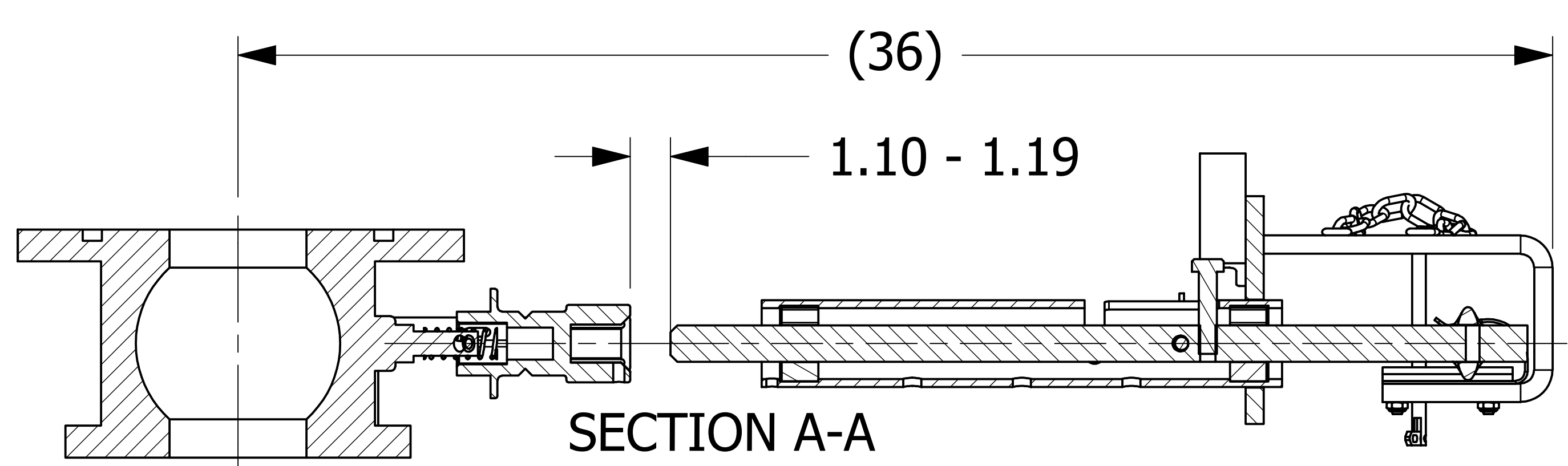
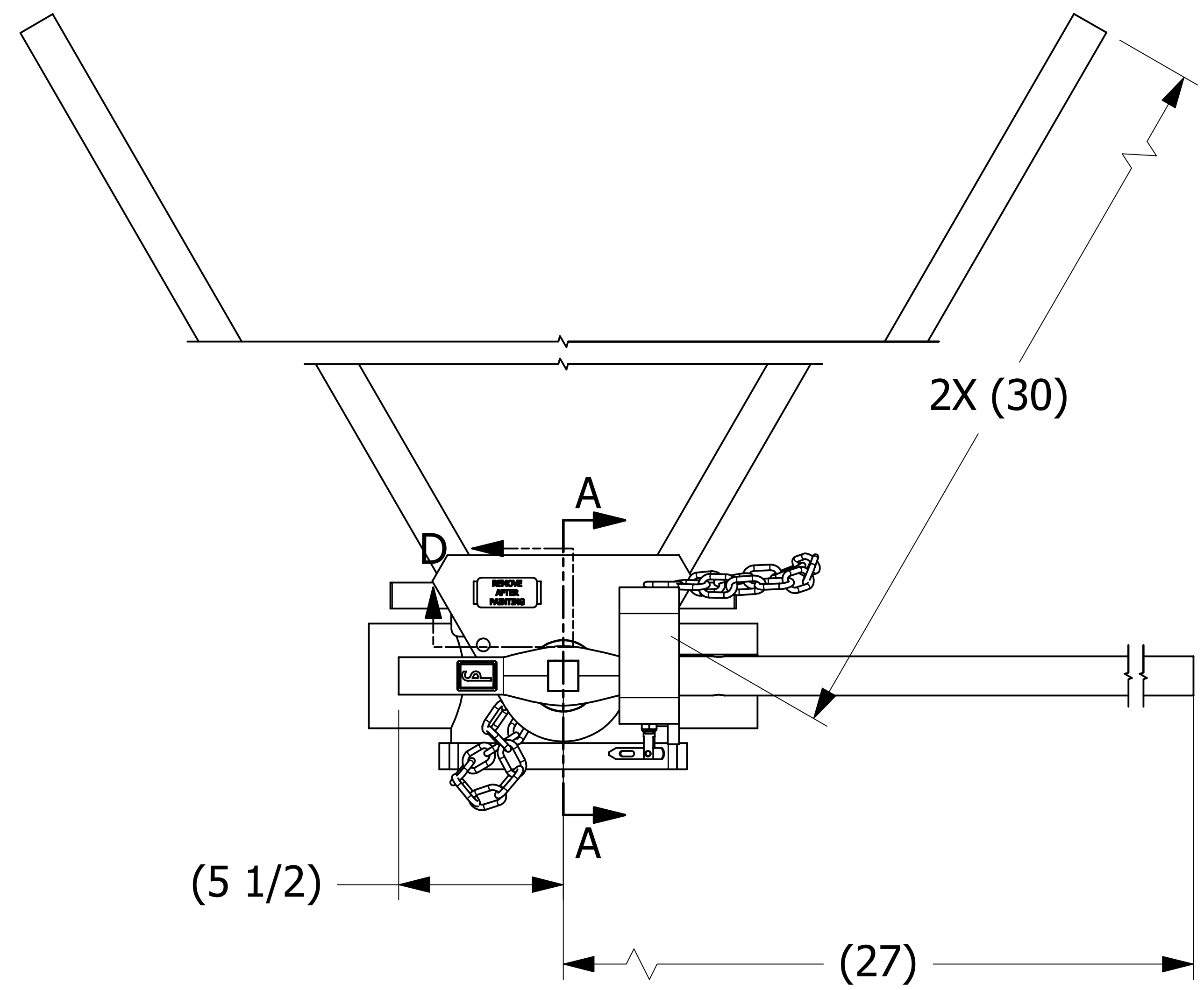
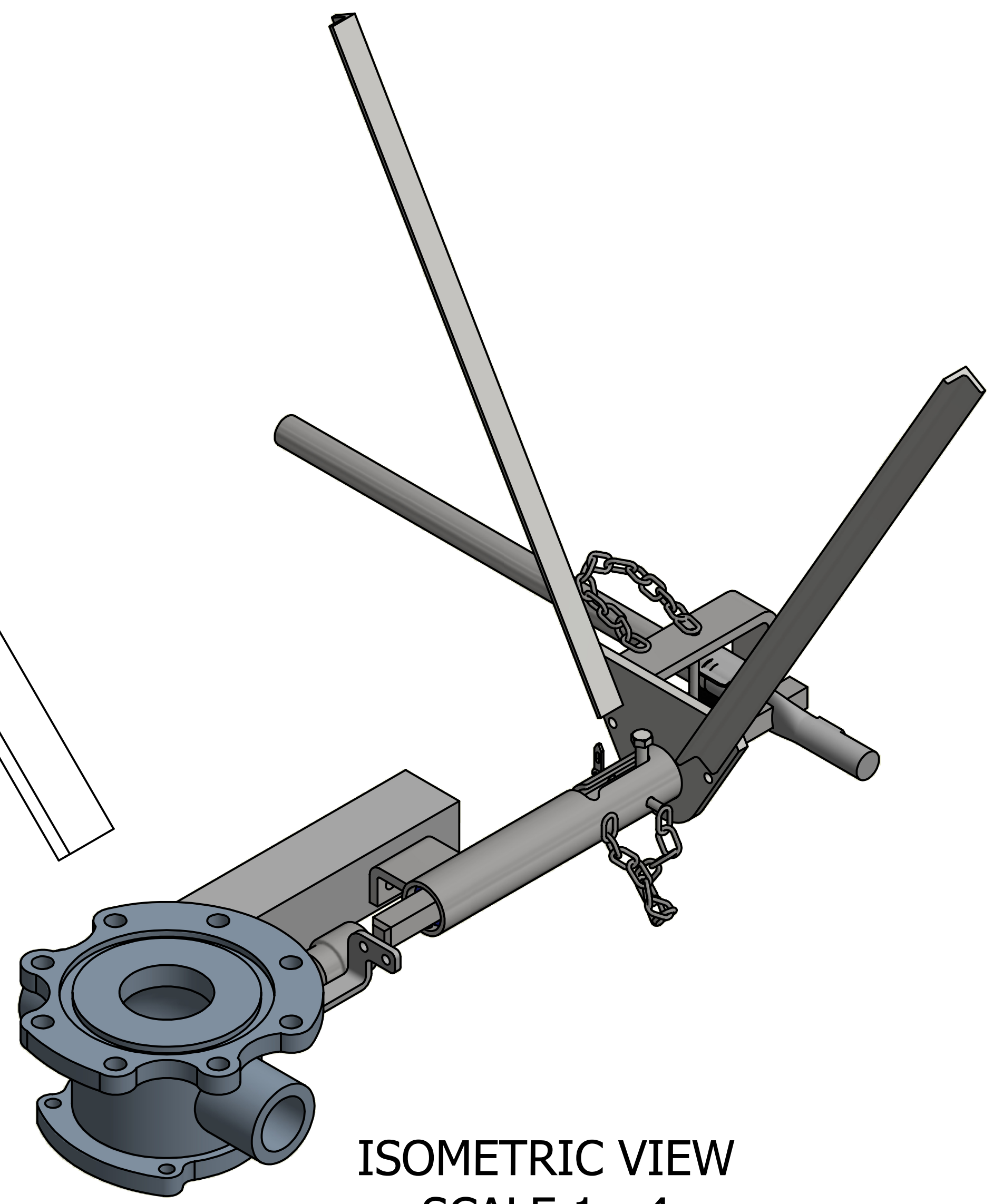
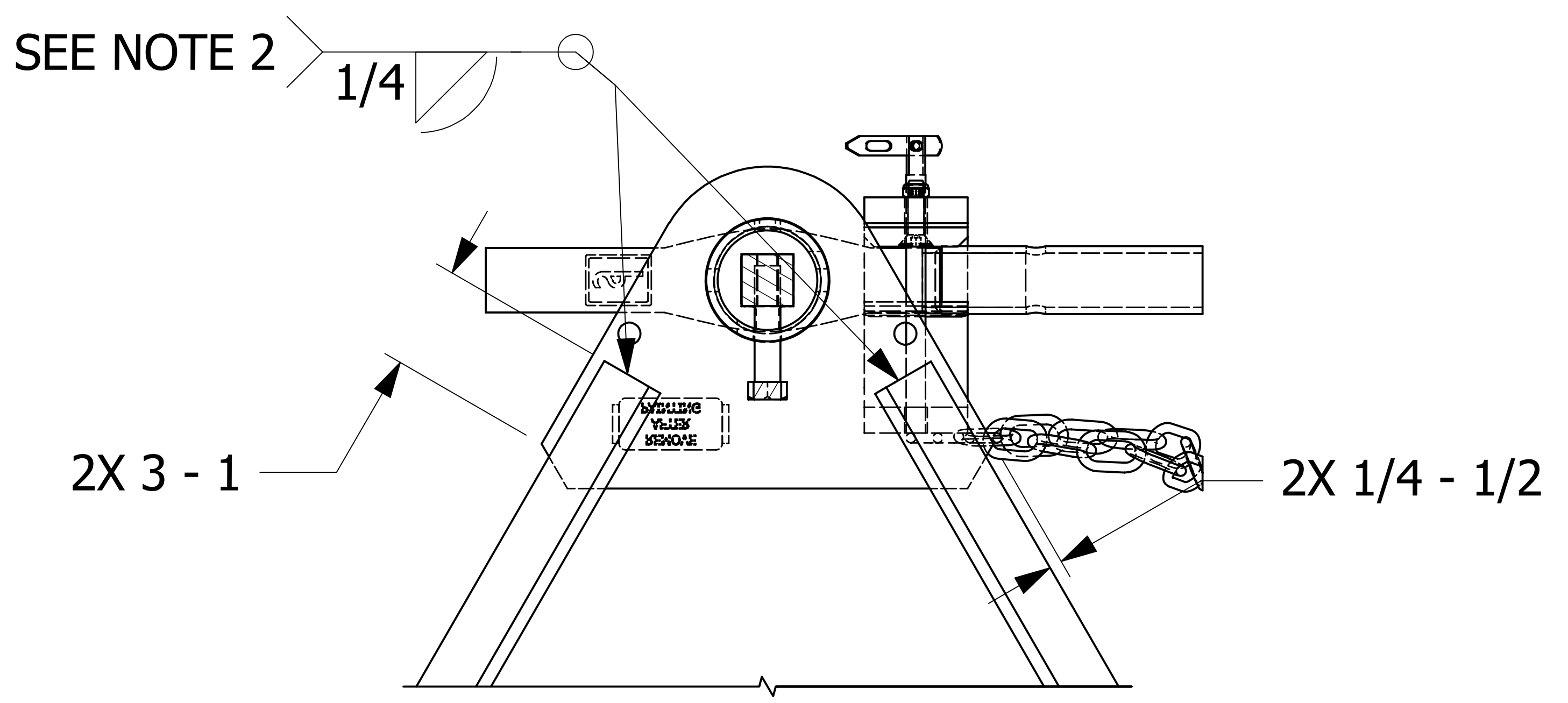
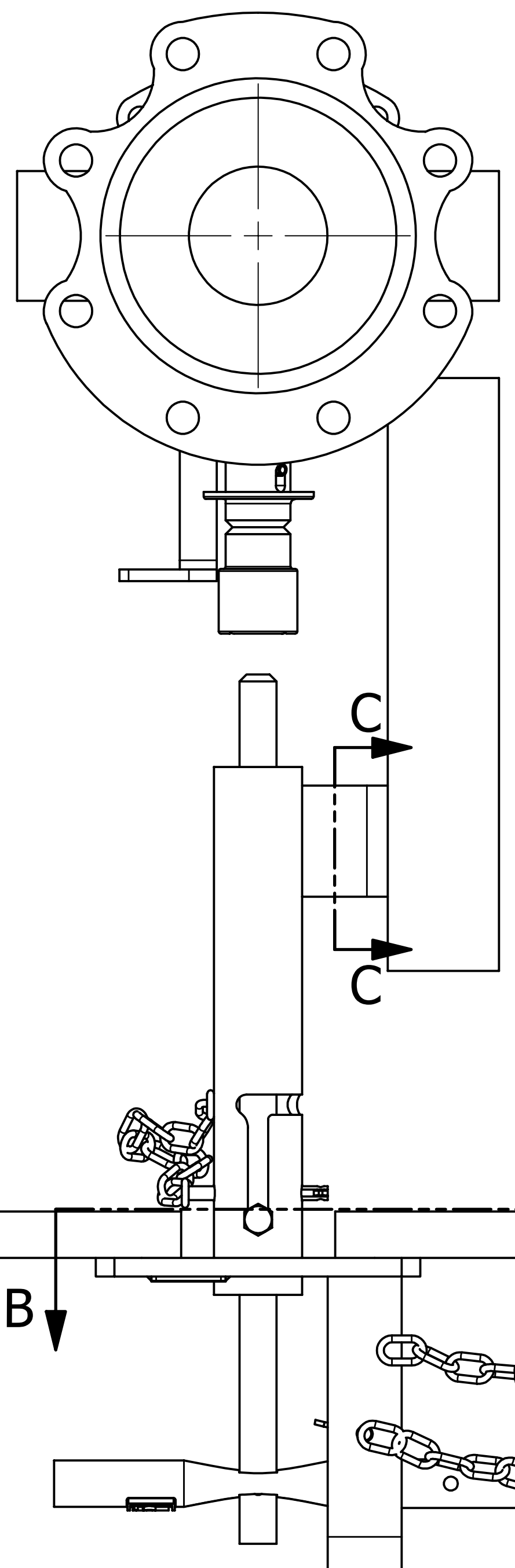
SALCO PRODUCTS, INC.

PART NAME: **SAFEGUARD™ BOV OPERATING SYSTEM**

MATERIAL: **SEE BOM**

PROJECT #: **140114T** SHEET #: **1 OF 2** SCALE: **1:3**

DRAWING #: **E45670** PART #: **BOVHKITCSJ10B**



UNLESS OTHERWISE SPECIFIED DIMENSIONAL TOLERANCES	DRAWN BY:	WEB
FRACTIONAL: ±1/16	CHECKED BY:	EJF
X.XX: ±.03	PROTOTYPE BY:	WEB
X.XXX: ±.015	PROTOTYPE DATE:	6/20/2017
ANGULAR: ±1°	APPROVED FOR PRODUCTION BY:	EJF
DEBURR ALL SHARP EDGES. ALL MACHINED SURFACES TO HAVE A 125 RMS FINISH UNLESS NOTED OTHERWISE.	PRODUCTION DATE:	7/31/2017
THIRD ANGLE PROJECTION		

B	WEB	4-9-18	ADDED TAG PLACEMENT DIMENSIONS, ADDED 1/8 TO TAG WELD, UPDATED WELD NOTES
A	WEB	7-31-17	RELEASED FOR PRODUCTION
REV	BY	DATE	DESCRIPTION

SALCO PRODUCTS, INC.			
SAFEGUARD™ BOV OPERATING SYSTEM			
SEE BOM			
PROJECT #:	140114T	SHEET #:	2 OF 2
DRAWING #:	E45670	SCALE:	1:3
PART #:		BOVHKITCSJ10B	