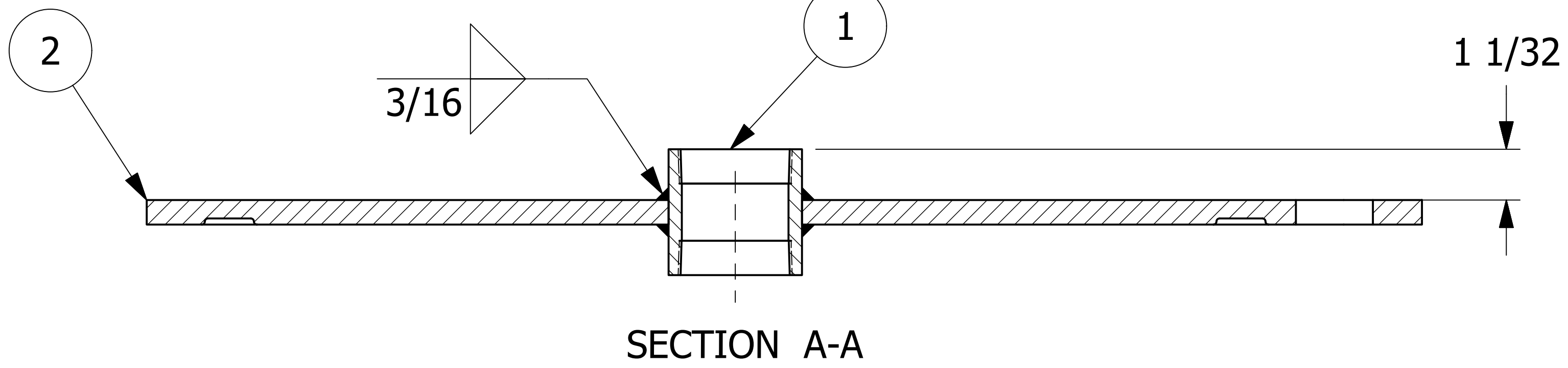
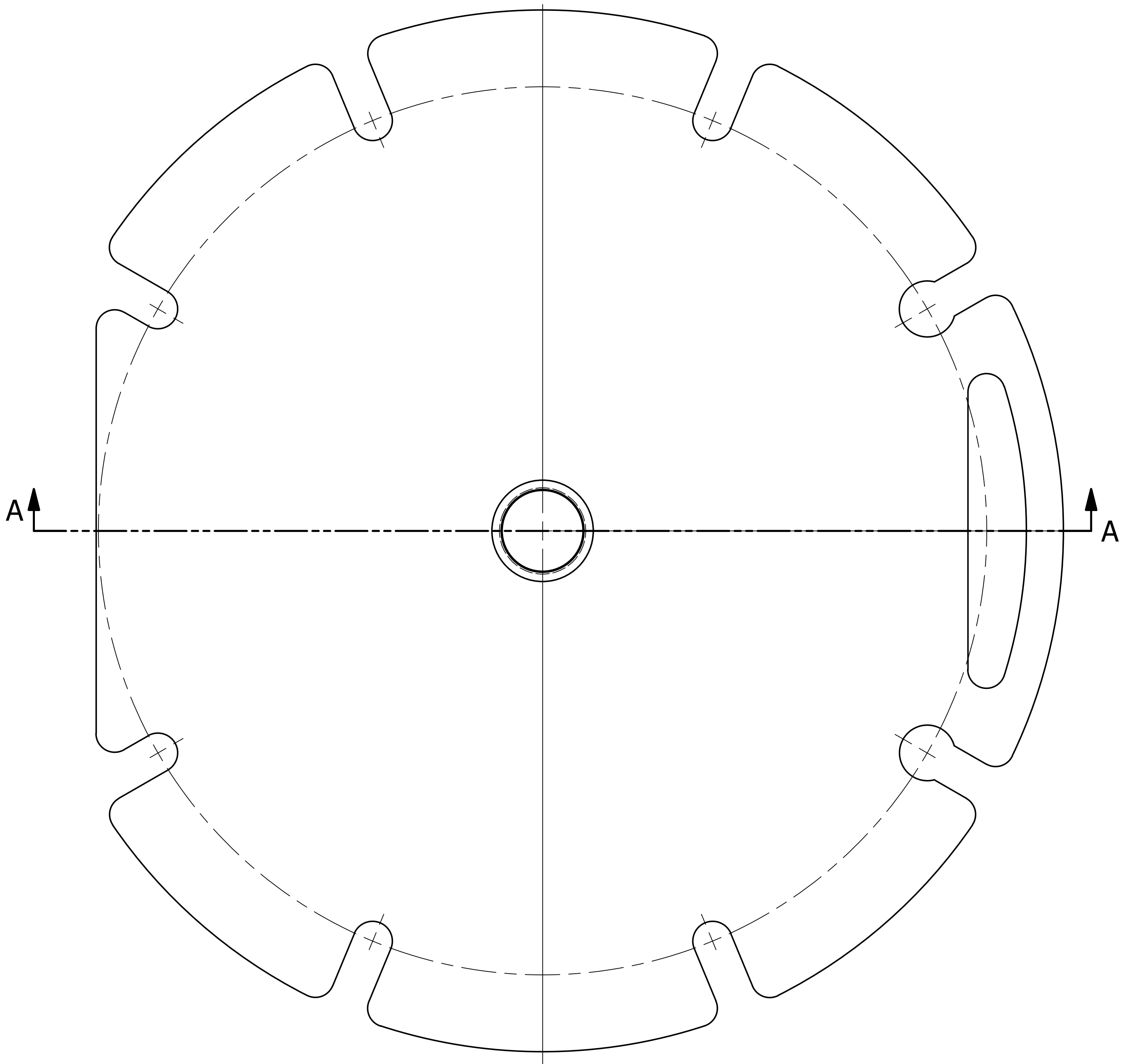


NO.	PART NAME	PART#	REQ'D	MATERIAL
1	COUPLING 2"	CPLGH2A	1	6061-T6 ALUMINUM
2	MANWAY LOADING PLATE 20"	D27126	1	ALUMINUM T6061-T6

NOTES:  
 1. SEE DOCUMENTS WPS-T01, WPS-P01, & WPS-M08 WELDING PROCEDURES.  
 2. WELD ACCEPTANCE CRITERIA TO MEET DOCUMENT D-005.



UNLESS OTHERWISE SPECIFIED DIMENSIONAL TOLERANCES FRACTIONAL: ±1/16 X.XX: ±.03 X.XXX: ±.015 ANGULAR: ±1° DEBURR ALL SHARP EDGES. ALL MACHINED SURFACES TO HAVE A 125 RMS FINISH UNLESS NOTED OTHERWISE. THIRD ANGLE PROJECTION	DRAWN BY:	CHL
	CHECKED BY:	VD
	PROTOTYPE DATE:	6/25/2009
	APPROVED FOR PRODUCTION BY:	
	PRODUCTION DATE:	
	SIZE:	D
DRAWING #:	27127	

B	WEB	2/3/22	UPDATED WELD PROCEDURE; ADDED D-005 NOTE; WELD SIZE WAS 1/4; UPDATED TITLE BLOCK; REMOVED REFERENCED DIMS; SORTED BOM
A	VD	8/18/09	ADDED PART TO SYSTEM
REV	BY	DATE	DESCRIPTION
PART NAME: MANWAY LOADING COVER 20"			
MATERIAL: SEE BOM			
PROJECT #: 090624		SHEET #: 1 OF 1	SCALE: 1:2
PART #: LC202TMC			