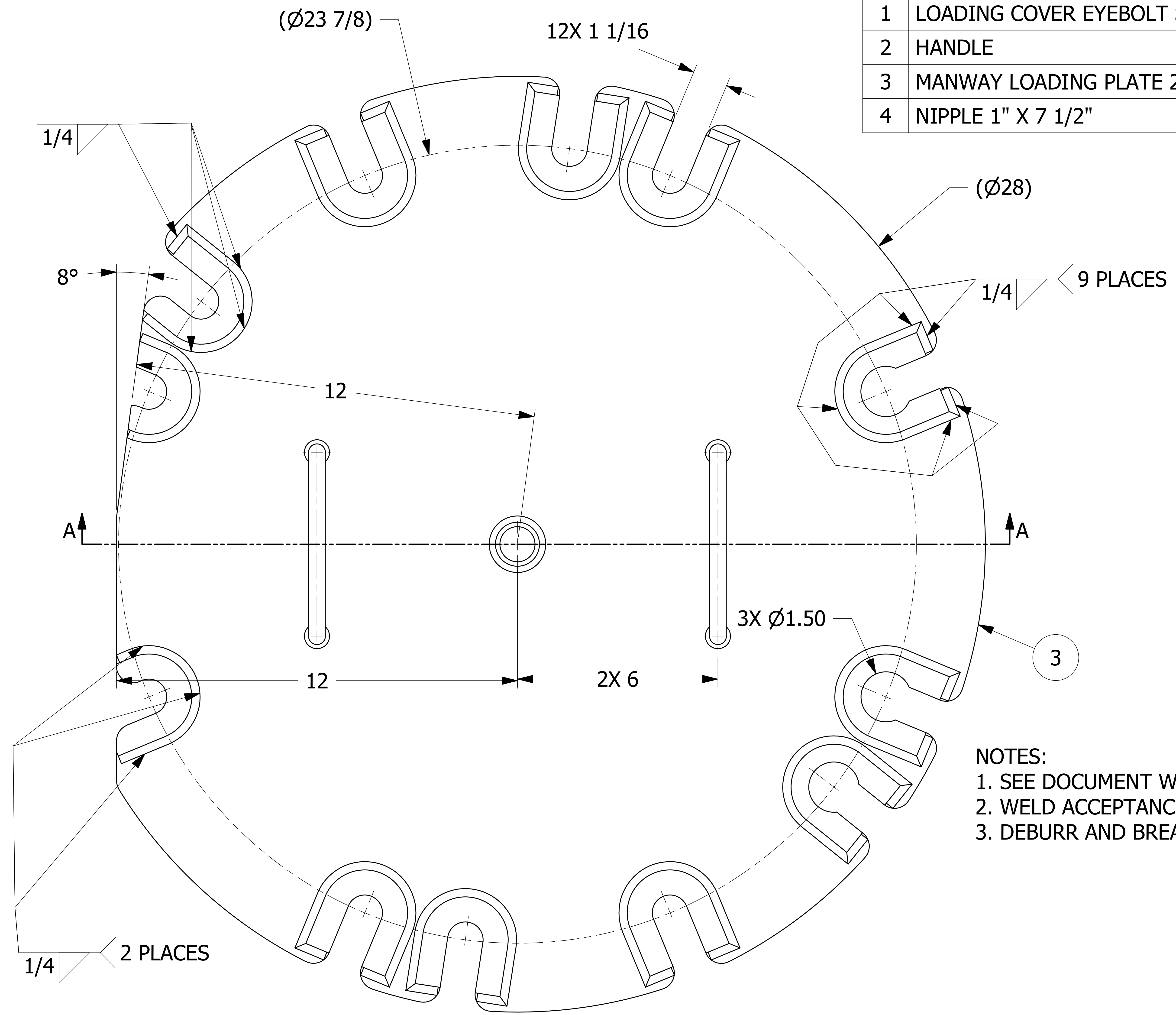
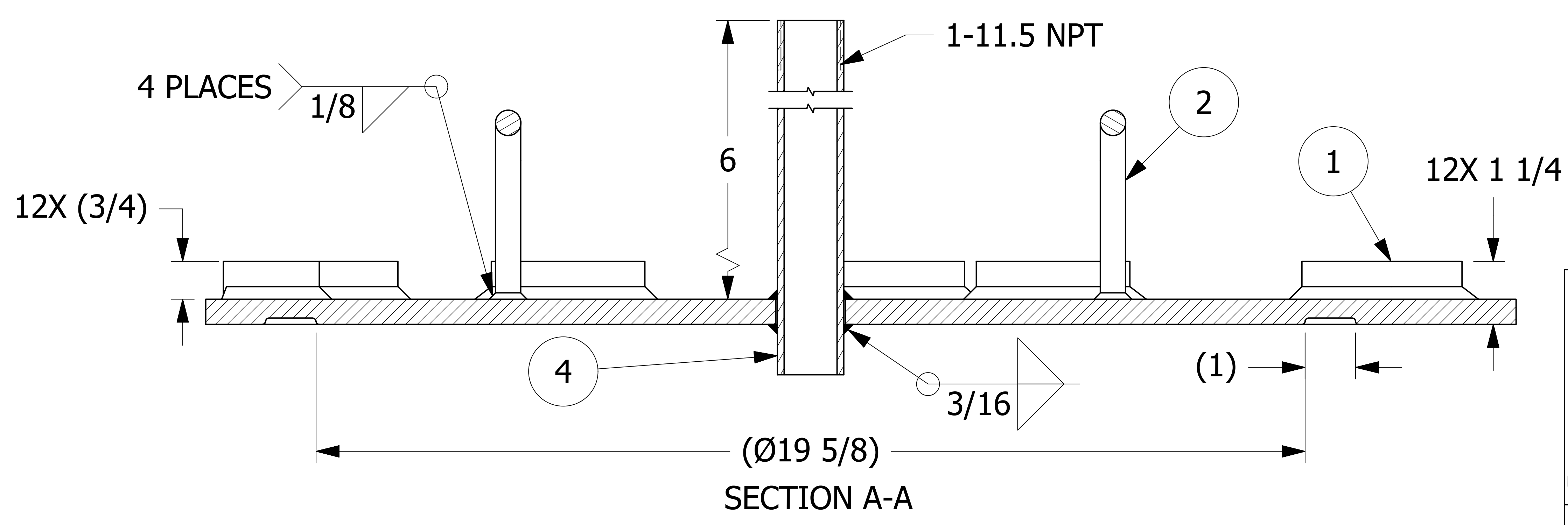


NO.	PART NAME	PART#	REQ'D	MATERIAL
1	LOADING COVER EYEBOLT SPACER	A28962	12	6061-T6 OR 6061-T6511 ALUMINUM
2	HANDLE	A31289	2	ASTM B221 6061 ALUMINUM
3	MANWAY LOADING PLATE 20"	E32268	1	6061-T6 ALUMINUM
4	NIPPLE 1" X 7 1/2"	N1712A40	1	ASTM B241 6061 ALUMINUM



NOTES:
 1. SEE DOCUMENT WPS-T01, WPS-M09,& WPS-P01 FOR WELDING PROCEDURES.
 2. WELD ACCEPTANCE CRITERIA TO MEET DOCUMENT D-005.
 3. DEBURR AND BREAK ALL SHARP EDGES.



UNLESS OTHERWISE SPECIFIED DIMENSIONAL TOLERANCES	DRAWN BY:	CHL
FRACTIONAL: ±1/16	CHECKED BY:	WRB
X.XX: ±.03	PROTOTYPE DATE:	1/9/2012
X.XXX: ±.015	APPROVED FOR PRODUCTION BY:	WRB
ANGULAR: ±1°	PRODUCTION DATE:	8/31/2012
DEBURR ALL SHARP EDGES. ALL MACHINED SURFACES TO HAVE A 125 RMS FINISH UNLESS NOTED OTHERWISE.	SIZE:	E
THIRD ANGLE PROJECTION	DRAWING #:	32269

C	WEB	7/6/21	EYEBOLT SPACER WELD UPDATED FROM 12 PLACES TO 9
B	WEB	8/20/19	UPDATED WELD NOTE TO WPS-T01, WPS-M09,& WPS-P01; ADDED D-005 NOTE; SORTED AND UPDATED BOM
A	BG	8/31/12	NEW PART ADDED TO THE NETWORK
REV	BY	DATE	DESCRIPTION

SALCO PRODUCTS, INC.

MANWAY LOADING PLATE 20" 6 & 8-BOLT

SEE BOM

PROJECT #: 120110 SHEET #: 1 OF 1 SCALE: 3:4

PART #: **LC202TMC05**