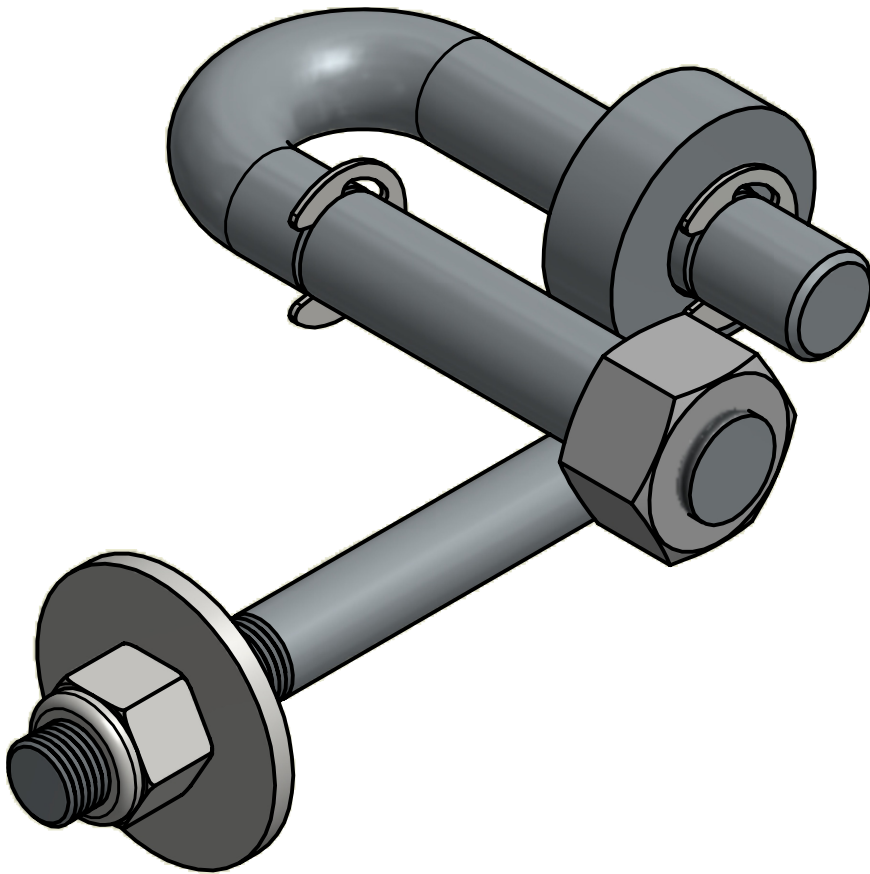


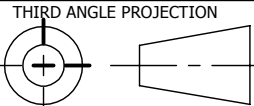
NO.	PART NAME	PART #	REQ'D	MATERIAL
1	VALVE COVER LOCK BAR	B16492	1	CARBON STEEL Z/P
2	VALVE COVER LOCK BAR	B16493	1	CARBON STEEL Z/P
3	FLAT WASHER 5/8" USS	A16494	1	CARBON STEEL Z/P
4	HEX LOCK NUT 1/2"-20	A16502	1	CARBON STEEL Z/P
5	E-CLIP 5/8"	A16570	3	CARBON STEEL Z/P
6	HEX NUT 5/8 CS	A16569	1	CARBON STEEL Z/P



ISOMETRIC VIEW

C	BG	4-8-15	CHANGED LN37216 BACK TO A16569
B	JG	1-20-15	REPLACED A16569 W/ LN37216
A	CHL	6-3-02	NEW PART ADDED TO SYSTEM
REV	BY	DATE	DESCRIPTION

UNLESS OTHERWISE SPECIFIED
DIMENSIONAL TOLERANCES
FRACTIONAL: $\pm 1/16$
X.XX: $\pm .03$
X.XXX: $\pm .015$
ANGLE: $\pm 1^\circ$
DEBURR ALL SHARP EDGES.
ALL MACHINED SURFACES TO
HAVE A 125 RMS FINISH UNLESS
NOTED OTHERWISE.



DRAWN BY:	CHL
CHECKED BY:	KRS1
PROTOTYPE BY:	CHL
PROTOTYPE DATE:	2/16/2015
APPROVED FOR PRODUCTION BY:	KRS1
PRODUCTION DATE:	6/3/2002



PART NAME: OUTLET COVER LOCK		
MATERIAL: SEE BOM		
PROJECT #: 011202B	SHEET #: 1 OF 1	SCALE: 1:1
DRAWING #: C16571	PART #: LC1932A	