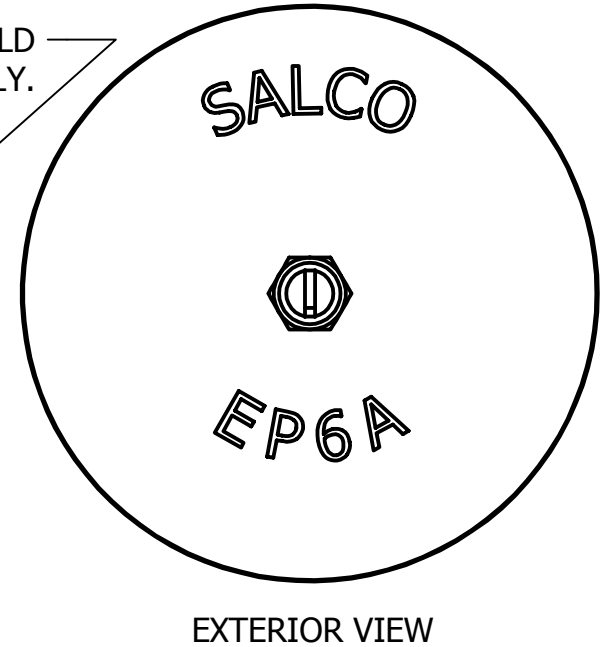
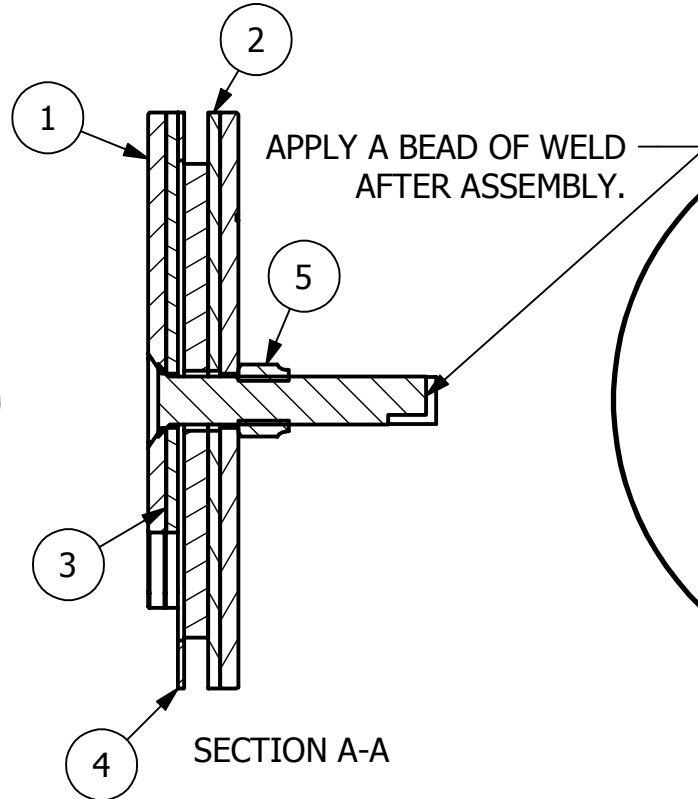
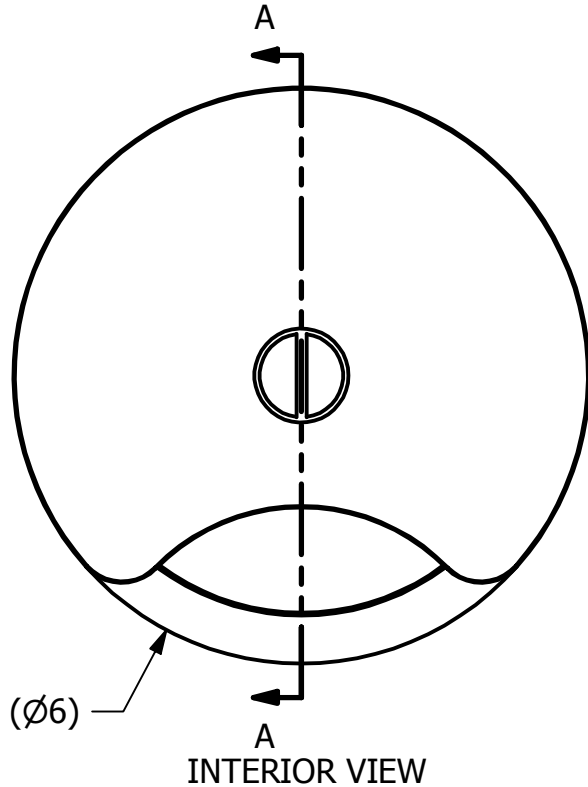


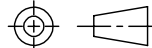
GLUE EXTERIOR GASKET TO OUTSIDE PLATE ASSEMBLY AND INTERIOR GASKET TO INSIDE PLATE. USING PRO GRIP 5500 OR EQUAL (CYANOACRYLATE INSTANT ADHESIVE.) FEL-PRO CHEMICAL PRODUCTS. RITE-LOK MC100 APPROVED GLUE SUB ASSEMBLY INCLUDES EP6E & EP6W.

NO.	PART NAME	PART#	REQ'D	MATERIAL
1	VENT PLUG ASSEMBLY	EP6	1	316 SS
2	VENT COVER GASKET EXTERIOR	EP6GEA	1	WHITE FDA NITRILE
3	VENT COVER GASKET INTERIOR	EP6GI	1	WHITE FDA NITRILE
4	VENT COVER SPACER GASKET	EP6SG	1	WHITE FDA NITRILE
5	HEX CORNELL LOCK NUT 1/2"-13	EP6LN	1	BRASS



REV	BY	DATE	DESCRIPTION
H	ACC	8-22-05	RITELOK PART NUMBER WAS EC100E
G	FOD	2-25-98	UPDATED B.O.M.
F	MRC	11-18-97	ADDED RITE-LOK NOTE
E	MRC	8-24-97	MOVED WELD 90 DEG.
D	MRC	8-26-97	UPDATED B.O.M.
C	CLH	3-6-97	ADD EP6SG SPACER GASKET
B	CLH	1-23-97	PART NO. EP6GE TO EP6GEA
A	CLH	12-2-96	REVISED GLUE SPEC.

UNLESS OTHERWISE SPECIFIED
DIMENSIONAL TOLERANCES
FRACTIONAL: ±1/16
X.XX: ±.03
X.XXX: ±.015
ANGULAR: ±1°
DEBURR ALL SHARP EDGES.
ALL MACHINED SURFACES TO
HAVE A 125 RMS FINISH
UNLESS NOTED OTHERWISE.
THIRD ANGLE PROJECTION



DRAWN BY:	CLH
CHECKED BY:	
PROTOTYPE BY:	CLH
PROTOTYPE DATE:	5/3/1996
APPROVED FOR PRODUCTION BY:	
PRODUCTION DATE:	

I	JRS	3-2-11	ADDED EP6LN TO B.O.M., UPDATED NOTE, UPDATED DWG TO CURRENT STANDARDS
---	-----	--------	---

SALCO PRODUCTS, INC.		
PART NAME: VENT COVER ASSEMBLY 6"		
MATERIAL: SEE BOM		
PROJECT #:	SHEET #: 1 OF 1	SCALE: 1:2
DRAWING #: A6033	PART #: EP6A	

THIS PRINT, PROPERTY OF SALCO PRODUCTS INC, CONTAINS PROPRIETARY INFORMATION AND MUST NOT BE COPIED, REPRODUCED, OR USED DETRIMENTALLY TO OUR INTEREST.