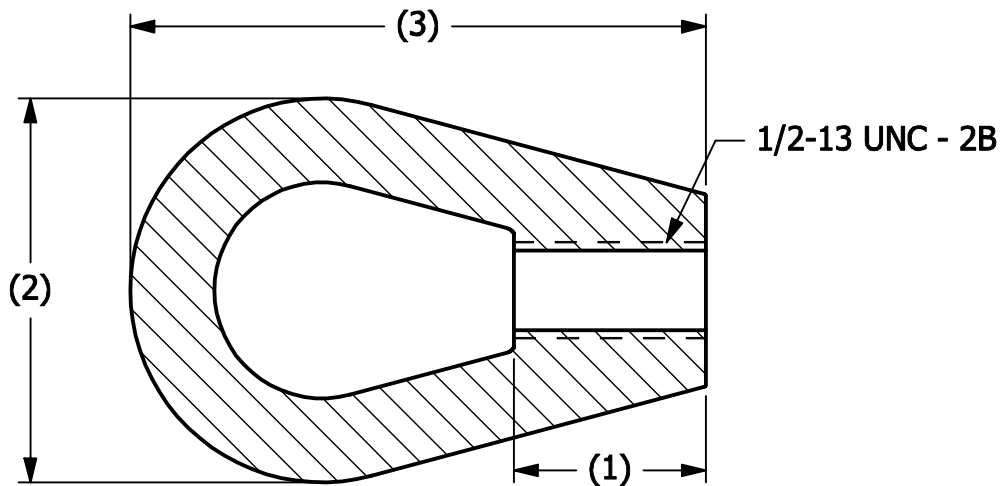
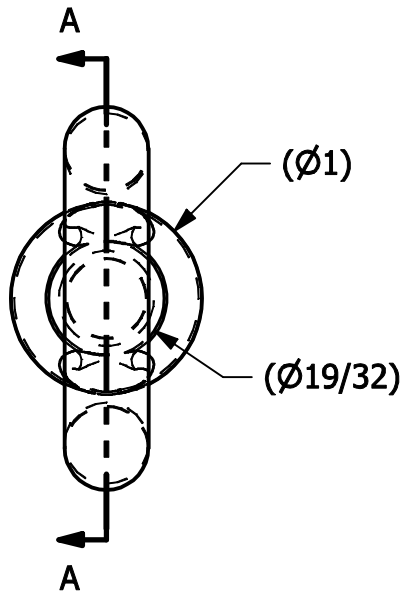


| NO. | PART NAME | PART# | REQ'D | MATERIAL |
|-----|-----------------|-------|-------|------------------|
| 1 | EYE NUT 1/2"-13 | T2EN | 1 | MANGANESE-BRONZE |



SECTION A-A

NOTE:
TO BE COATED BLACK TFE OR PTFE.

| REV | BY | DATE | DESCRIPTION |
|-----|-----|---------|--------------------------|
| A | CHL | 4-21-08 | NEW PART ADDED TO SYSTEM |

| | | | | | | |
|---|-----------------------------|-----------|---|---------|----------|--------|
| <small>UNLESS OTHERWISE SPECIFIED DIMENSIONAL TOLERANCES</small> FRACTIONAL: $\pm 1/16$ X.XX: $\pm .03$ X.XXX: $\pm .015$ ANGULAR: $\pm 1^\circ$ <small>THIS PRINT, PROPERTY OF SALCO PRODUCTS INC, CONTAINS PROPRIETARY INFORMATION AND MUST NOT BE COPIED, REPRODUCED, OR USED DETRIMENTALLY TO OUR INTEREST.</small> <small>THIRD ANGLE PROJECTION</small> | DRAWN BY: | CHL | SALCO PRODUCTS, INC. PART NAME: EYE NUT 1/2"-13 | | | |
| | CHECKED BY: | PJG | | | | |
| | PROTOTYPE BY: | CHL | MATERIAL: SEE BOM | | | |
| | PROTOTYPE DATE: | 9/13/2007 | PROJECT #: | WAG0467 | SHEET #: | 1 OF 1 |
| | APPROVED FOR PRODUCTION BY: | PJG | DRAWING #: | A24117 | PART #: | T2ENT |
| | PRODUCTION DATE: | 4/21/2008 | | | | |