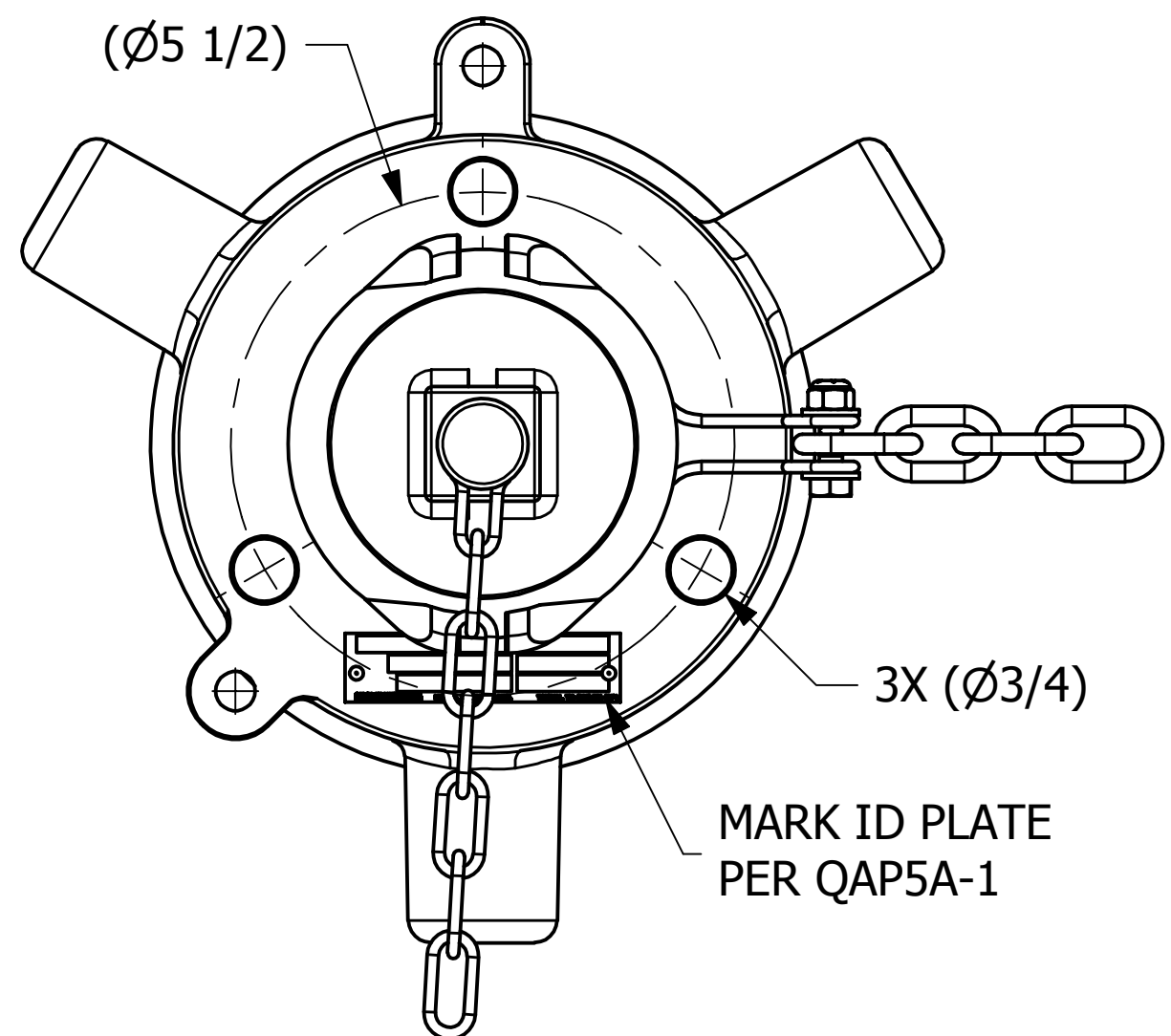


4

3

2

1



NO.	PART NAME	PART#	REQ'D	MATERIAL
1	ID PLATE 3" X 3/4"	A15152	.5	ALUMINUM
2	DRIVE SCREW TYPE U #2 X 1/8"	DR218	2	18-8 SS
3	SURGE PROTECTOR	DSP3313SS6	1	316L SS
4	QUICK INSPECT FLANGE GASKET	FG550N	1	WHITE FDA NITRILE
5	QI RETAINER GASKET	QI261G2	1	WHITE FDA NITRILE
6	QI RUPTURE DISK GASKET	QI261RDG2	1	WHITE FDA NITRILE
7	QUICK INSPECT BODY	QI261S6B	1	316 SS
8	QUICK INSPECT RETAINER DISC	QI261S6RDSA	1	316 SS
9	QUICK INSPECT CAP ASSEMBLY	QI261S6TCA	1	316 SS
10	RUPTURE DISK (SOLD SEPARATELY)			

D

D

C

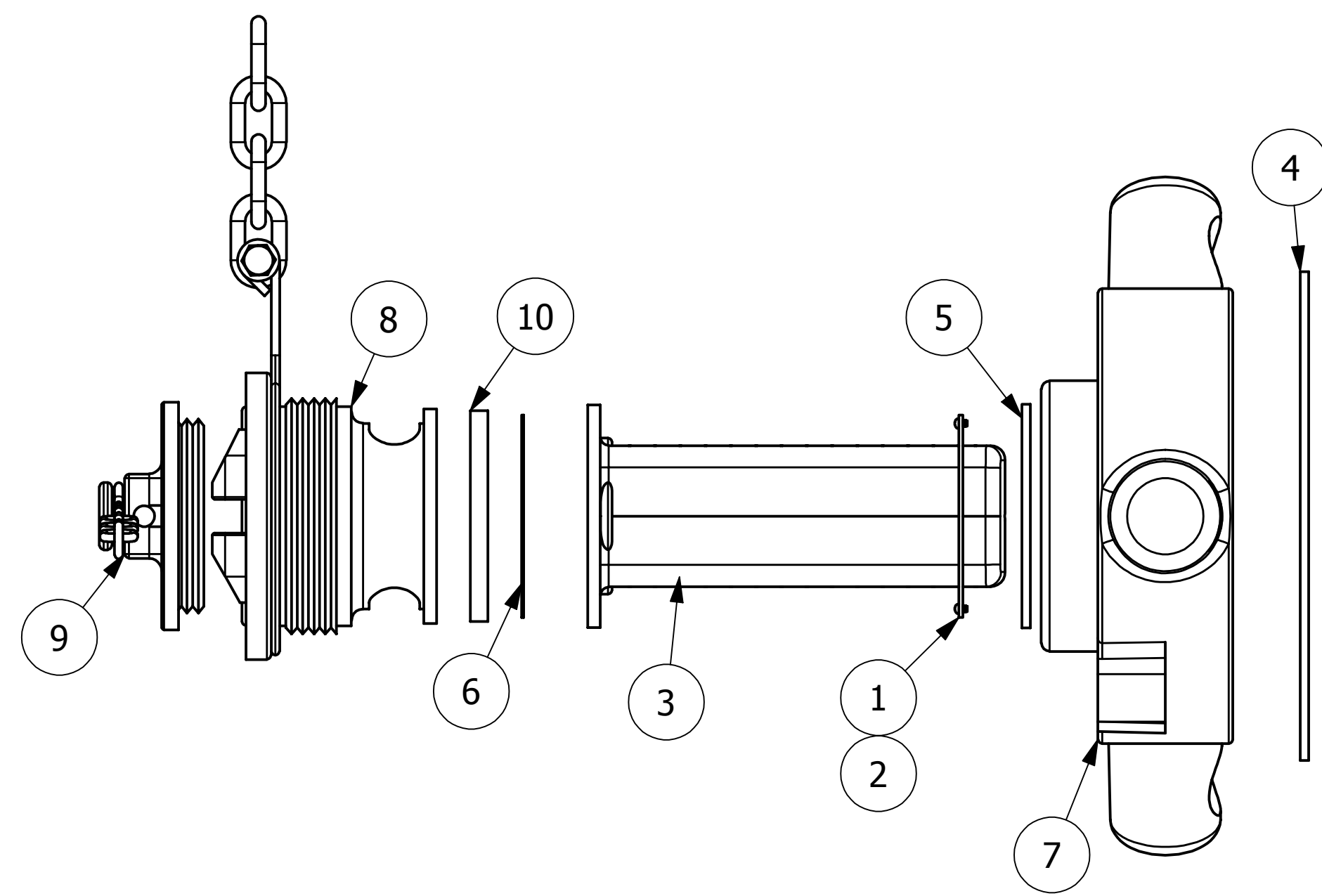
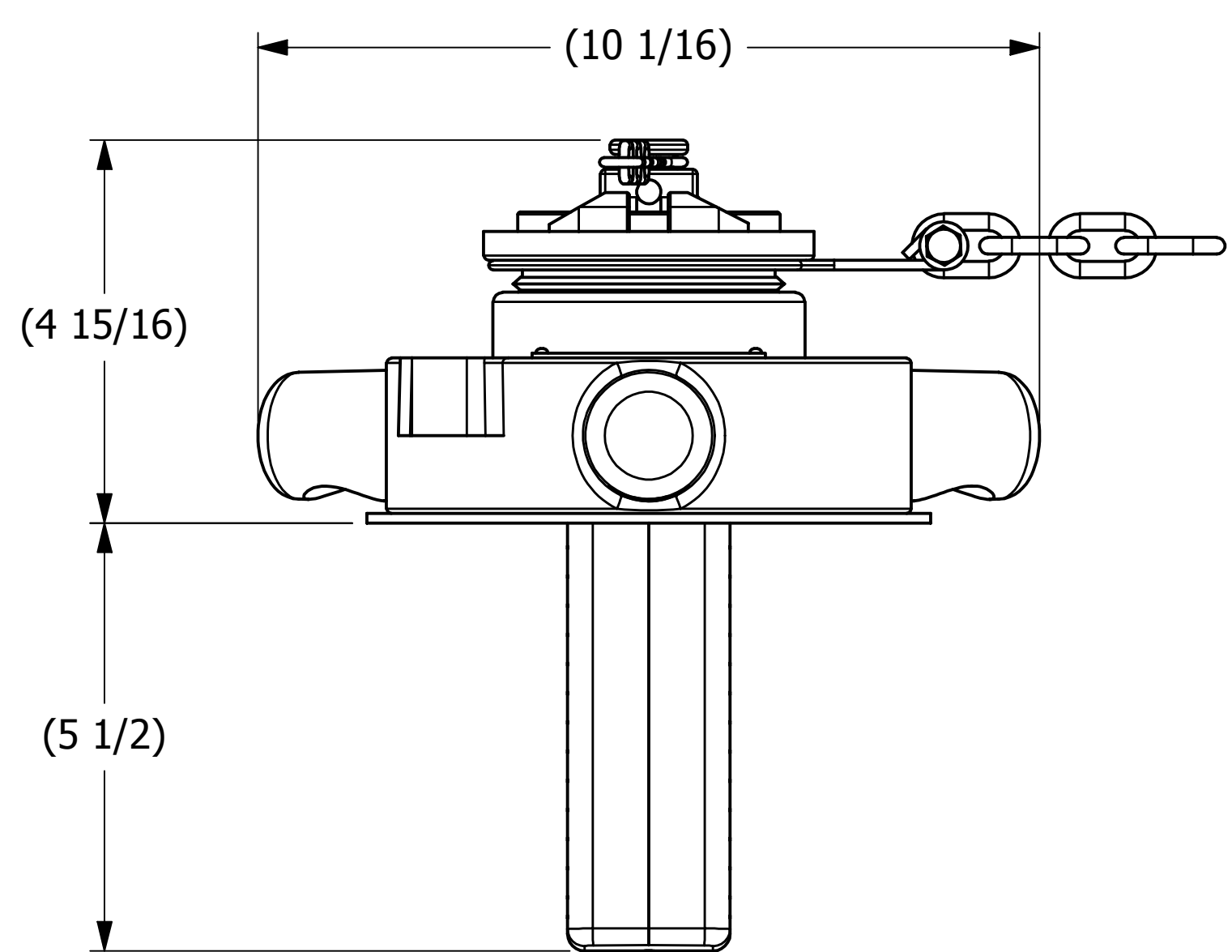
C

B

B

A

A



- NOTES:**
1. CUSTOMERS RESPONSIBILITY FOR COMPATIBILITY OF COMMODITY.
  2. AAR APPROVAL # PRD-162102.
  3. SEE DOCUMENT QAP5A-1 FOR MARKING PROCEDURE.
  4. FASTEN ID PLATE WITH DRIVE SCREWS.

REV	BY	DATE	DESCRIPTION
C	JG	2-9-17	ADDED A15152, DR218; UPDATED NOTES, VIEWS
B	JG	12-29-16	AAR APPROVAL # WAS SRD-063000
A	RJP	8-6-15	RELEASED FOR PRODUCTION

UNLESS OTHERWISE SPECIFIED DIMENSIONAL TOLERANCES FRACTIONAL: ±1/16 X.XX: ±.03 X.XXX: ±.015 ANGLE: ±1° DEBURR ALL SHARP EDGES. ALL MACHINED SURFACES TO HAVE A 125 RMS FINISH UNLESS NOTED OTHERWISE. THIRD ANGLE PROJECTION	DRAWN BY:	RJP
	CHECKED BY:	CHL
	PROTOTYPE BY:	RJP
	PROTOTYPE DATE:	1/15/2015
	APPROVED FOR PRODUCTION BY:	CHL
	PRODUCTION DATE:	8/6/2015

**SALCO PRODUCTS, INC.**

PART NAME: **QUICK INSPECT SAFETY VENT**

MATERIAL: **SEE BOM/NOTE**

PROJECT #: **R1501141** SHEET #: **1 OF 1** SCALE: **1:2**

DRAWING #: **C40628** PART #: **QI261S602A**

4

3

2

1