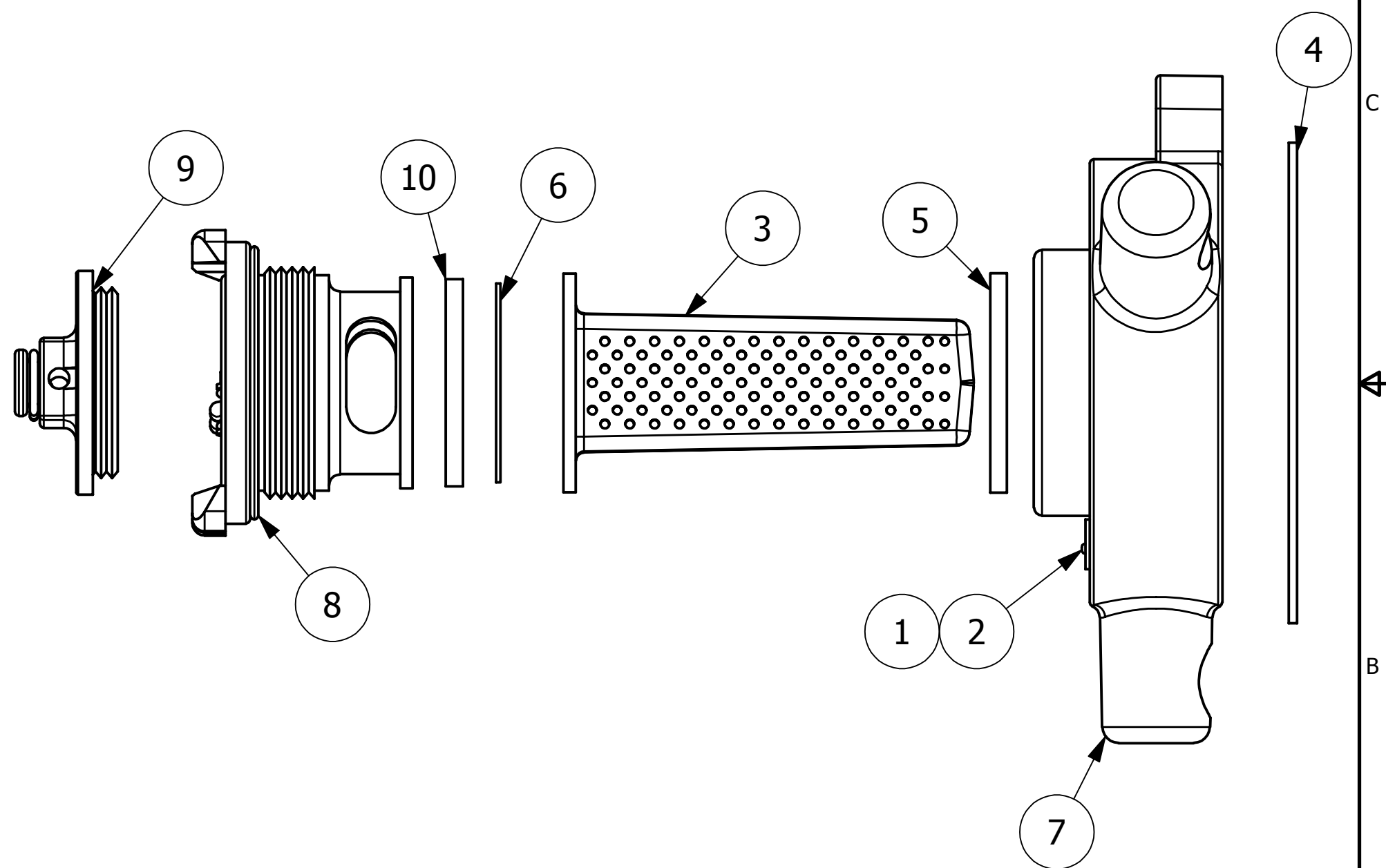
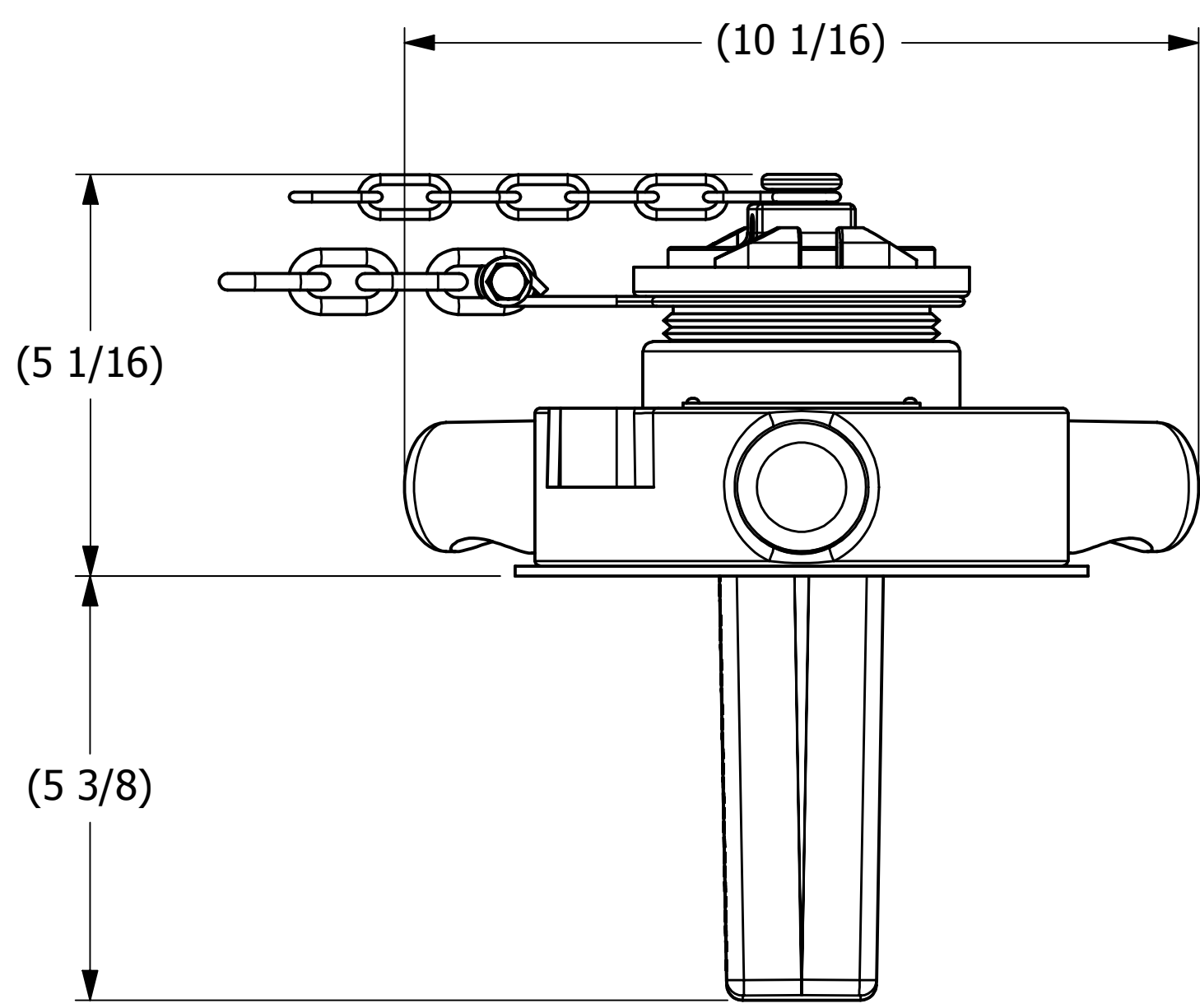


NO.	PART NAME	PART#	REQ'D	MATERIAL
1	ID PLATE 3" X 3/4"	A15152	.5	ALUMINUM
2	DRIVE SCREW TYPE U #2 X 1/8"	DR218	2	18-8 SS
3	SURGE SUPPRESSOR	DSP3313SS6	1	316 SS
4	QUICK INSPECT FLANGE GASKET	FG55053	1	GYLON 3545
5	QI RETAINER GASKET	QI261DG53	1	GYLON 3545
6	QI RUPTURE DISK GASKET	QI261RDG53	1	GYLON 3545
7	QUICK INSPECT BODY	QI261S6B	1	316 SS
8	RETAINER DISC ASSY QI	QI261S6RDS7A	1	SEE DWG
9	QUICK INSPECT CAP ASSEMBLY	QI261S6TCA	1	316 SS
10	RUPTURE DISC (SOLD SEPARATELY)			



- NOTES:**
1. CUSTOMERS RESPONSIBILITY FOR COMPATIBILITY OF COMMODITY.
  2. AAR APPROVAL # PRD-162102.
  3. SEE DOCUMENT QAP5A-1 FOR MARKING PROCEDURE.
  4. FASTEN ID PLATE WITH DRIVE SCREWS.

REV	BY	DATE	DESCRIPTION
A	JG	2-9-17	AAR APPROVAL # WAS SRD-063000; ADDED A15152, DR218; UPDATED VIEWS, NOTES

<small>UNLESS OTHERWISE SPECIFIED DIMENSIONAL TOLERANCES FRACTIONAL: ±1/16 X.XX: ±.03 X.XXX: ±.015 ANGLE: ±1° DEBURR ALL SHARP EDGES. ALL MACHINED SURFACES TO HAVE A 125 RMS FINISH UNLESS NOTED OTHERWISE.</small>	DRAWN BY:	REH
	CHECKED BY:	CHL
	PROTOTYPE BY:	REH
	PROTOTYPE DATE:	10/22/2010
	APPROVED FOR PRODUCTION BY:	
THIRD ANGLE PROJECTION	PRODUCTION DATE:	

**SALCO PRODUCTS, INC.**

PART NAME:  
**QUICK INSPECT SAFETY VENT**

MATERIAL: **SEE BOM**

PROJECT #: SHEET #: **1 OF 1** SCALE: **3:8**

DRAWING #: **C29704** PART #: **QI261S6053A**